

ChessZone Magazine

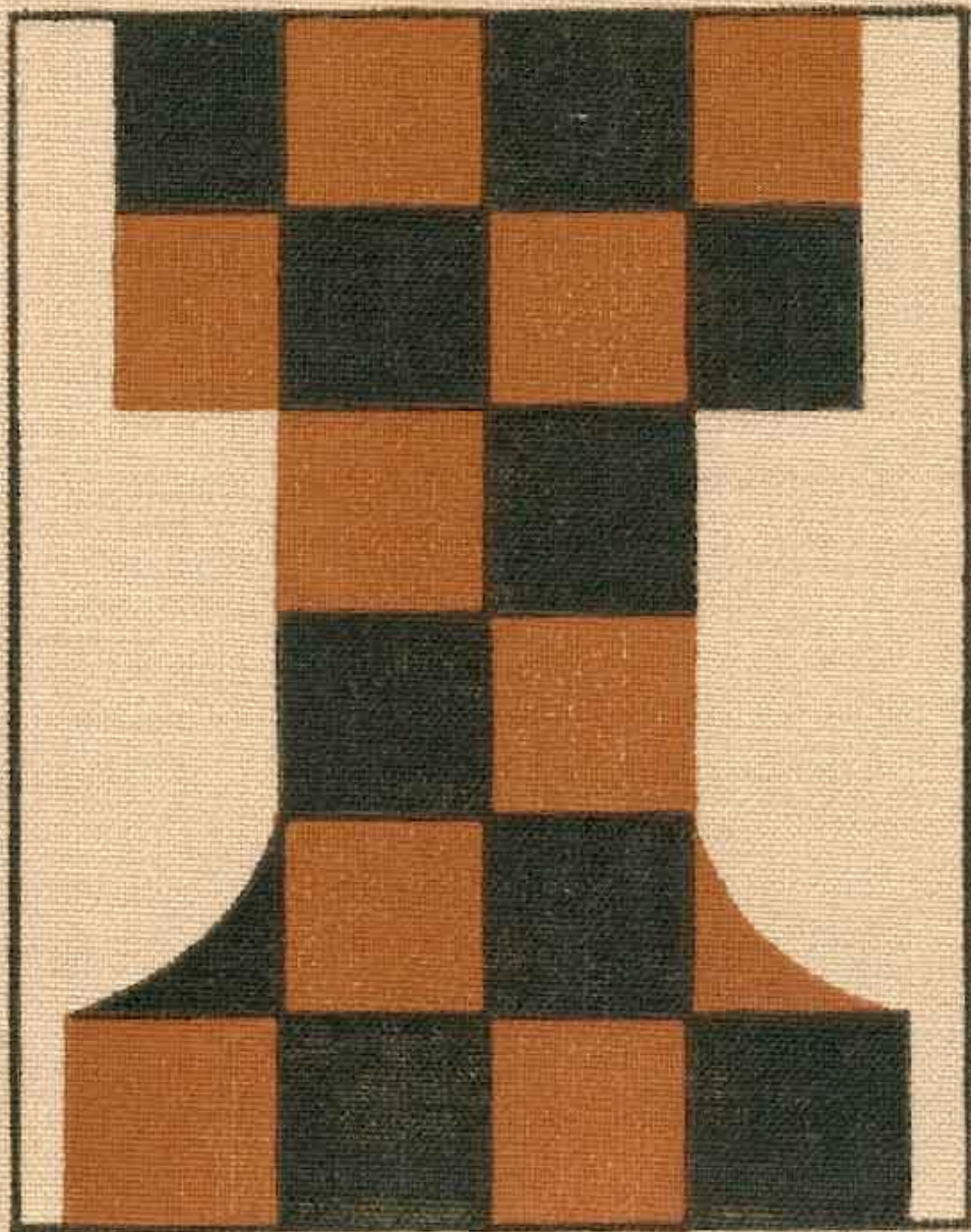


Table of contents: # 11, 2013

Games	4
(01) Brkic,A (2580) - Stanojoski,Z (2417) [B38]	4
(02) Solak,D (2618) - Grischuk,A (2785) [B30]	6
(03) Mamedyarov,S (2757) - Topalov,V (2774) [D31].....	8
(04) Laznicka,V (2677) - Brunello,S (2615) [D16].....	9
(05) Kovalev,V (2583) - Edouard,R (2653) [C07].....	11
(06) Salgado Lopez,I (2610) - Balogh,C (2630) [D15].....	12
(07) Radjabov,T (2715) - Swiercz,D (2627) [D85].....	14
(08) Gunina,V (2509) - Lagno,K (2542) [D85].....	16
(09) Vishnu,P (2505) - Popov,I (2652) [D85].....	18
(10) Anand,V (2775) - Carlsen,M (2870) [E25]	19
Editorial staff:.....	21

Dear readers!

**ChessZone Magazine is open for your advertising materials.
We have various ad packages at affordable rates!**

**We're also interested in cooperation with advertising agencies,
and could offer great commissions for anyone
who could bring an advertisers to us.**

**Please contact us for details
chesszone@ya.ru**

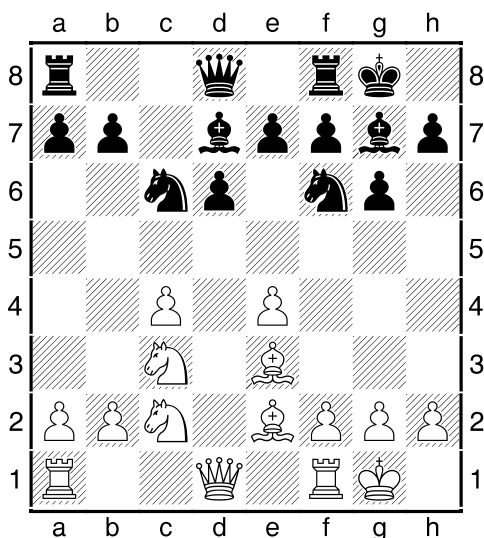
Games

(01) Brkic,A (2580) - Stanojoski,Z (2417) [B38]

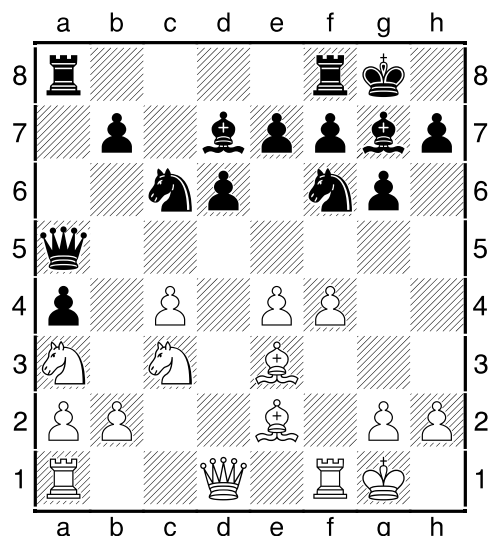
19th European Teams Warsaw POL (1), 08.11.2013

[IM Sitnikov, A]

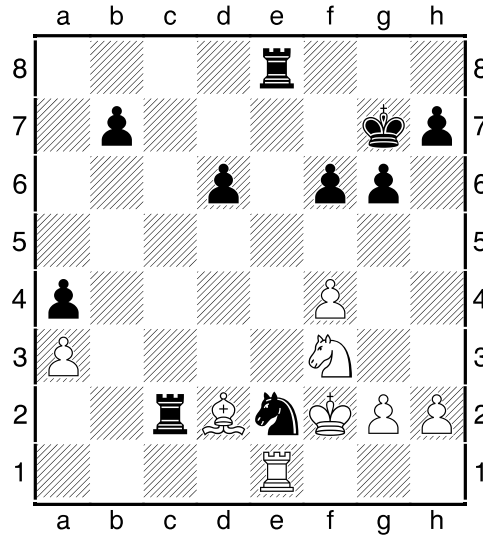
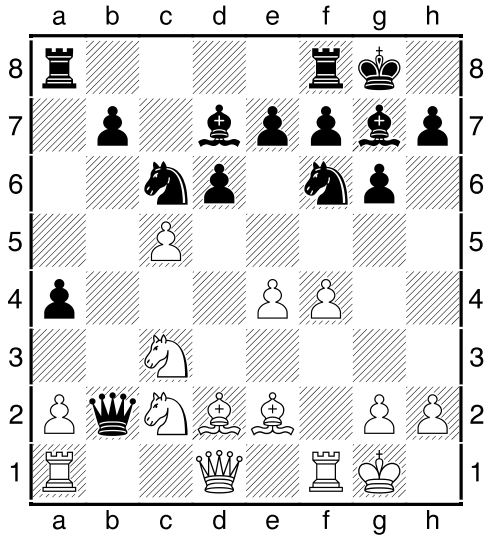
1.e4 c5 2.Nf3 Nc6 3.d4 c:d4 4.N:d4 g6 5.c4 White chooses Maroczy option, where black often has to defend slightly worse position because of white superiority in space... 5...Bg7 6.Be3 Nf6 7.Nc3 d6 8.Be2 0-0 9.0-0 Bd7 10.Nc2!?



Very logical continuation. Black has constrained position, so white tries to keep more pieces in game. [The main, well-trodden path here 10.Qd2 N:d4 11.B:d4 Bc6 Earlier everybody here automatically defended the e4-pawn by f2-f3, but recently gaining popularity continue 12.Qd3!? Nd7 13.B:g7 K:g7 14.b4 white has a clear advantage on queenside and in the center] **10...a5?!** Black chose risky and aggressive plan: trying to regain space on queenside, but irreparably weakened point b5, where in the near future send hooves one of the white knights. **11.Na3 a4 12.f4** [Also well here 12.f3! defending central pawn and preparing jump of the knight on d5. After rash movement pawn "a" in the black camp became vulnerable not only field b5 but also b6... 12...Qa5 13.Nd5±] **12...Qa5**

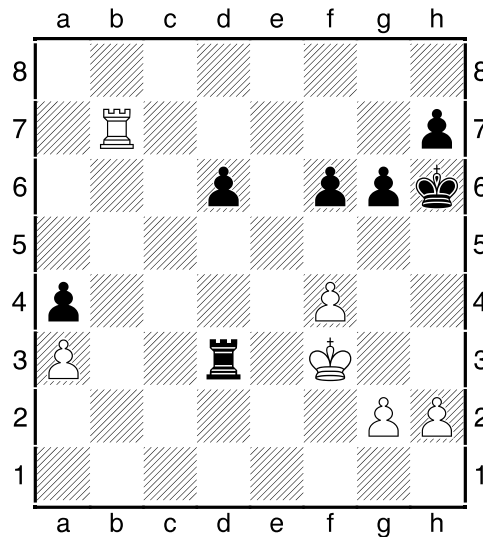


13.c5? Such drastic actions white was no need. The fact that Maroczy system is aimed at stifling enemy, depriving him of all sorts of counterplay. Black there need any complications, like air. Also in this case many variants are in favor for black. [In case of relaxing 13.Rc1 not seen any active game for black. Has to stay and "wait": 13...Rfd8 (13...Qb4 14.Nab5 Rfc8 15.h3 Na5 16.e5) 14.Nab5 Rac8 (14...a3 15.b:a3) 15.Bf3 a3 16.b:a3 (also good 16.b3 Nb4 17.Qe2 Bc6 18.e5 d:e5 19.f:e5 Nd7 20.e6 f:e6 21.Bg4 Nf8 22.Na4) 16...Be6 17.Nd5 Nd7] **13...Qb4** [Worthy alternative - tactical strike 13...Ng4! 14.B:g4 B:g4 15.Q:g4 B:c3 16.b:c3 (16.Qe2 Bg7 17.c:d6 e:d6 18.Nb5 a3 19.N:a3 Qb4!) 16...Q:c3 this whole thing - black regains piece and has a slight advantage! 17.Qe2 Q:a3 18.c:d6 Q:d6] **14.Nc2** [It is difficult to assess the position after 14.Rb1 N:e4 15.Nd5 Qa5 16.Nc4 Qd8 17.Ndb6 Bf5 18.N:a8 Q:a8 - white won some material, but black's pieces are very active] **14...Q:b2 15.Bd2?**



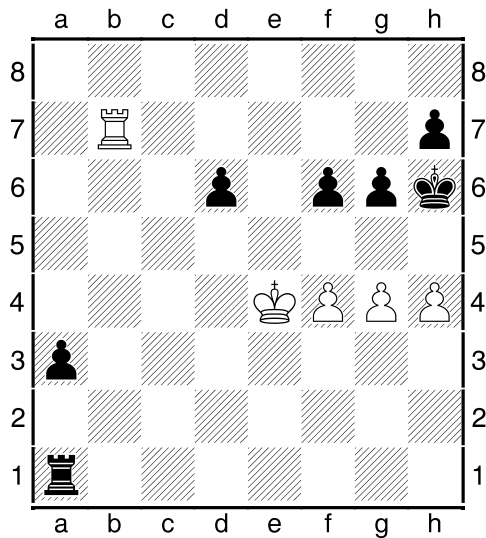
Most likely, white thought partner caught in a trap: try to save his queen! But black found tactical knockout punch! [After the "seal" maneuver 15.Qd3! appears irrational position, which is, apparently, within the dynamic equilibrium... 15...Nb4 16.N:b4 Q:b4 17.Rab1 Qa3 18.R:b7 Bc8 19.c6! B:b7 20.c:b7 Rae8] **15...Nd4!** Straight into the jaws of a tiger! [15...Nb4? 16.Ne3! Ng4! 17.Nc4 Qc2 18.e5 d:e5 19.B:g4 B:g4 20.Q:g4 e4 21.Rac1 Qd3 22.Qe2!±] **16.Ne3?** [Good or ill, had to go to option 16.N:d4 N:e4 17.N:e4 Q:d4+ 18.Nf2 Q:a1 19.Q:a1 B:a1 20.R:a1 d:c5 21.Bf3 with some chance for salvation] **16...N:e4!-+** It's all over: black's material advantage is too large. **17.N:e4 Q:a1 18.Q:a1 N:e2+ 19.Kf2 B:a1 20.R:a1 Bc6 21.c:d6 B:e4 22.Ng4 e:d6** [The simplest – 22...Bd3! 23.d:e7 Rfc8 and black has at least an extra piece] **23.Nf6+ Kg7 24.N:e4 Rfe8 25.Ng5 Rac8 26.Re1 f6?! [26...Nd4! 27.R:e8 R:e8 28.Bc3 Re2+ 29.Kf1 R:a2 30.B:d4+ Kf8 and black pawns unstoppable] 27.Nf3 Rc2 28.a3**

28...Nd4? Black transfers game into rook ending – in vain! It's too large drawing tendencies of these endgames. Healthy extra pawn often is not enough to succeed. [Black should go for pawn "a" undeterred loss knight: 28...Ra2 29.R:e2 R:e2+ 30.K:e2 R:a3 31.Nd4 Ra1 32.Nc2 Rh1! 33.h3 Rg1 34.Kf2 Rb1 35.Ke2 Rb3 36.Nd4 Rg3 – black, achieving field weakening g3, shattered white defense] **29.R:e8 N:f3 30.K:f3 R:d2 31.Re7+ Kh6 32.R:b7** Now black go for the a3 pawn, but he has to leave the pawn d6. Intrigue of endgame is will the black ruler get into the white camp through the point h5 and disturb enemy infantry? **32...Rd3+**



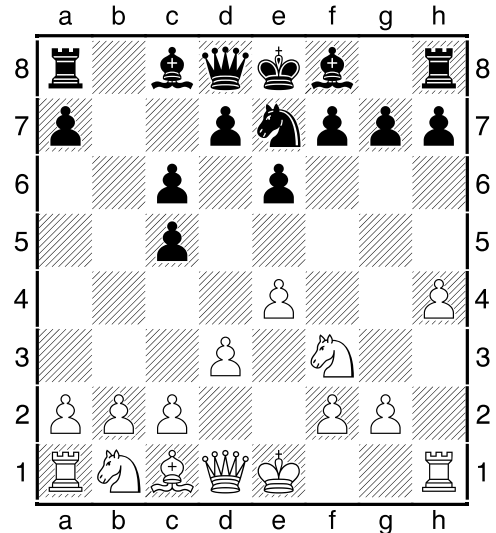
33.Ke4? Blunder. White king in his old age

rushed somewhere, leaving adrift of his loyal soldiers! [Of course it was necessary to keep closely to own: 33.Ke2 R:a3 34.Rd7 Ra2+ 35.Kf3 f5 (35...Rd2 36.Ra7 Rd4 37.g4 g5 38.f5 Rf4+ 39.Kg3 Rb4=) 36.R:d6 Kh5 37.Rd7 h6 38.h3 Ra3+ 39.Kf2 Rb3 40.Ra7 a3 41.g3 g5 42.Ra5 Rb2+ 43.Kf3 a2 44.f:g5 h:g5 45.Ra6 g4+ 46.h:g4+ f:g4+ 47.Kf4 Rf2+ 48.Ke3 Rf3+ 49.Ke2 R:g3 50.Kf2!=] **33...R:a3 34.g4 Ra1 35.h4 a3??**

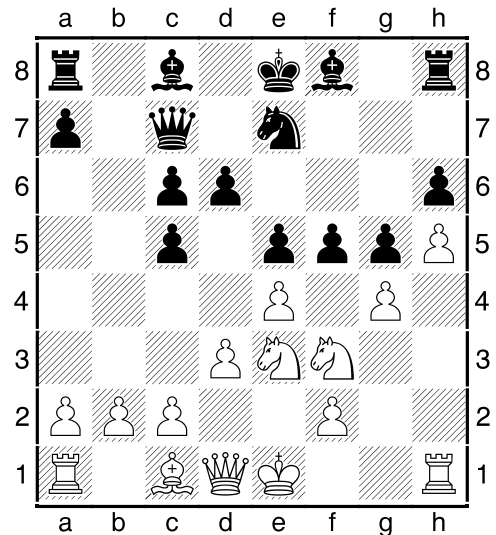


Big blunder. [Simple intermediate check destroying white design: 35...f5+ 36.g:f5 a3-+] **36.Kf3??** [Elementary 36.g5+ Kh5 37.Kf3 , weaving a checkmate "box" around the black king, led to an inevitable draw! Black must check by rook on the first line. Really white wanted to make g4-g5 with all the comforts?] **36...g5!** No chance in this game will be presented for white. **37.f:g5+ f:g5 38.Kg2 a2 39.Ra7 g:h4 40.Ra5 d5 41.g5+ Kg6 0-1**

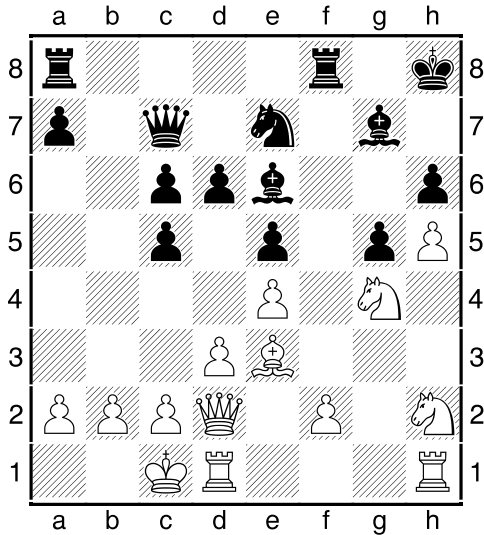
(02) Solak,D (2618) - Grischuk,A (2785) [B30]
 19th European Teams Warsaw POL (2),
 09.11.2013
 [IM Sitnikov, A]
1.e4 c5 2.Nf3 Nc6 3.Bb5 e6 4.B:c6 b:c6 5.d3 Ne7 6.h4



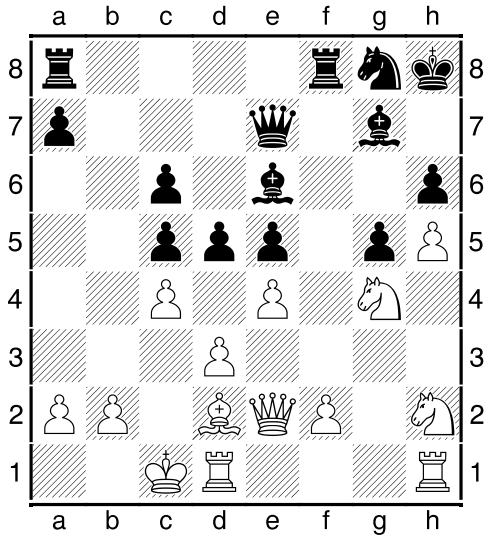
[The main continuation here is 6.Qe2 Ng6 7.h4 Qc7 8.h5 Nf4 9.Qd2 e5 10.Qc3 N:g2+ 11.Kf1 Nf4 12.B:f4 e:f4 13.h6 Rg8 14.e5 Ba6 15.Nbd2 0-0-0 16.Rg1 ~~избытке~~ 16...g6 with further d7-d6, c5-c4 black pieces received the necessary freedom of movement, position equalized / Leitao, R (2598) - Amura, C (2372) / American Continental 3rd 2005] **6...Qc7 7.h5 e5N** In any case, without fixing the center black can not do. **8.Nbd2 f6 9.Nh4 g5 10.Nhf3 d6 11.Nf1 h6 12.Ne3 f5 13.g4!?**



Interesting idea blockade moving pawns...
13...f:g4 14.Nh2 Bg7 15.Ne:g4 0-0 16.Be3 Be6 17.Qd2 Kh8 18.0-0-0

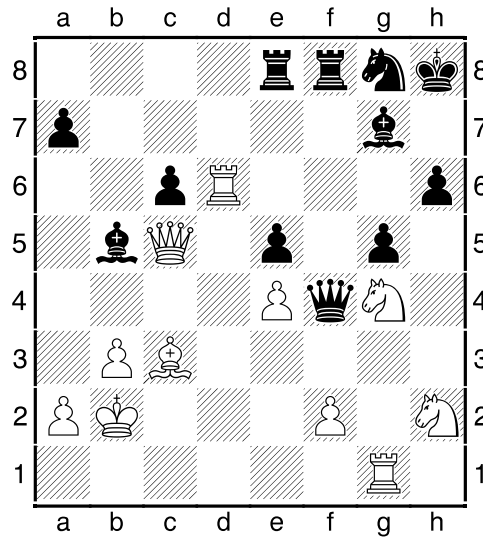


18...Ng8?! By itself, the move still does not spoil anything, but it is the first link of wrong plan. Instead, it looked good a7–a5 followed by redeployment queen to b4. It may be noted that in this case the initiative completely on the black side. **19.c4 Qe7 20.Qe2 d5?!** So, implemented coveted job in the centre. But in the end? Only themselves headache – both pawns e5 and c5 are irreparably weakened. **21.Bd2**

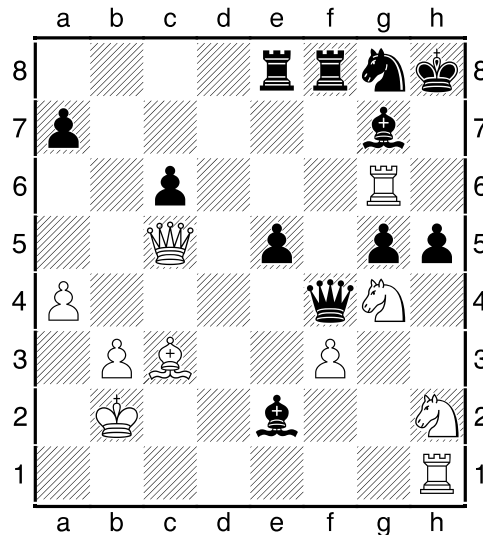


21...d:c4?! Black doesn't realize his mistake, under hypnosis of notorious bishops pair, and goes for open play. But who can really expect to succeed when on hospital beds g7 and g8 vegetate two shell-shocked soldiers? **22.d:c4 Qf7 23.Bc3 B:c4 24.Qe3 Rae8 25.b3 Bb5 26.Rd6**

Q:h5 27.Rg1?! Instead divert rook from a good line, strengthen bastions by f2–f3 to further increase pressure... **27...Qf7 28.Q:c5 Qf4+ 29.Kb2**



29...h5?! [To successfully protect black was enough to exchange a pair of knights: **29...Nf6 30.f3 N:g4 31.N:g4 Q:f3 32.Rg6 Q:e4 33.Qd6 Qd3 34.R:h6+ Kg8 35.Nf6+ B:f6 36.R:f6 Q:d6 37.R:g5+ Kh7 38.R:d6 Rd8 with a draw] 30.Rh1 Q:e4 31.f3 Qf4 32.a4 Be2 33.Rg6?!**



[Deserves attention **33.Rd2 B:f3 34.N:f3 Q:g4 35.N:e5 B:e5 36.B:e5+ Kh7 37.Q:a7+ Re7 38.Qc5** – through pieces activity one white passed pawn is stronger than two black ones] **33...Nf6??** After this blunder

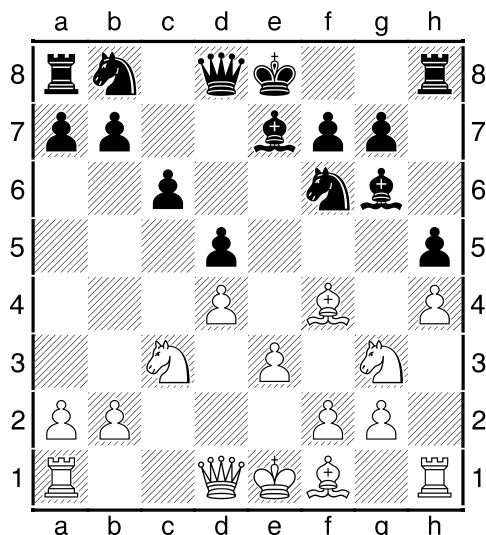
white wins "anyway". [After a good 33...Rf7 34.R:g7 K:g7 35.N:e5 Nf6 36.N:f7 K:f7 37.Q:a7+ Re7 38.Qd4 Q:d4 39.B:d4 Nd5 better chances on black side, because the knight on h2 hardly satisfied with his lot] **34.N:e5** After 34. Qa7 black could immediately resign... **34...Kh7?! 35.Nhg4 B:f3 36.R:g7+ K:g7 37.Q:a7+ 1-0**

(03) Mamedyarov,S (2757) - Topalov,V (2774) [D31]

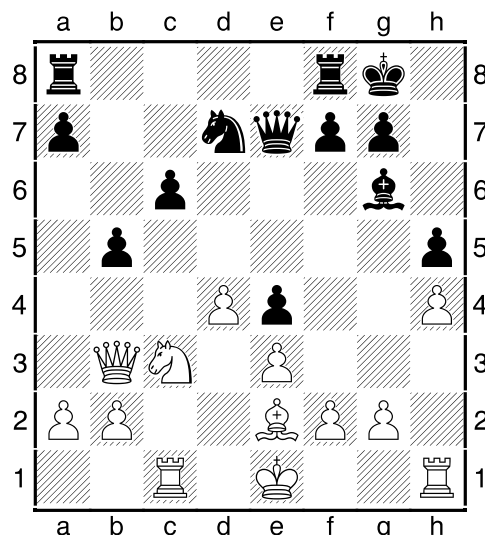
19th European Teams Warsaw POL (2), 09.11.2013

[IM Sitnikov, A]

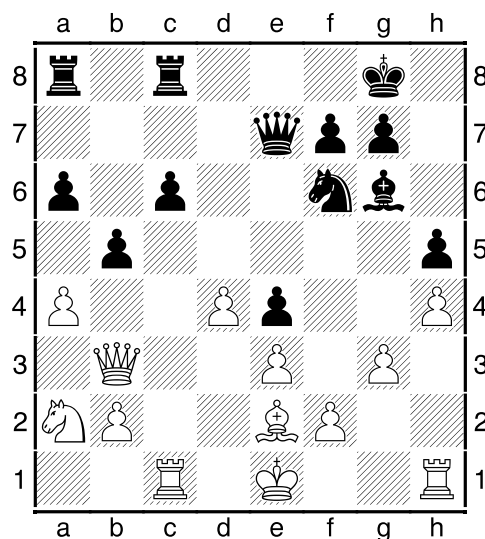
1.d4 d5 2.c4 e6 3.Nc3 Be7 4.c:d5 e:d5 5.Bf4 c6 6.e3 Bf5 7.Nge2 Nf6 8.Ng3 Bg6 9.h4 h5



10.Bg5N Toothless move, not in the style of Mamedyarov. Should not delay to provide the basic plan – creating a mobile center. [There are two ways that promise good prospects: both 10. Bd3 and 10.Be2 Qb6 11.Qd2 Nbd7 12.Rc1 Kf8 13.a3 Ne8 14.e4 d:e4 15.d5! Rd8 16.b4 Ndf6 17.Na4 R:d5 18.N:b6 R:d2 19.B:d2 a:b6 20.a4 and white gradually realized the material advantage / Volkov, S (2613) – Burmakin, V (2575) / 2nd Server24 Open 2013] **10...Nbd7 11.Be2 Ne4 12.Ng:e4 d:e4 13.B:e7 Q:e7** If the white pawn "h" didn't move, the game could be quite simple. And now white has to "look round" constantly, so the opponent wants to broke kingside. **14.Qb3 b5 15.Rc1 0-0**

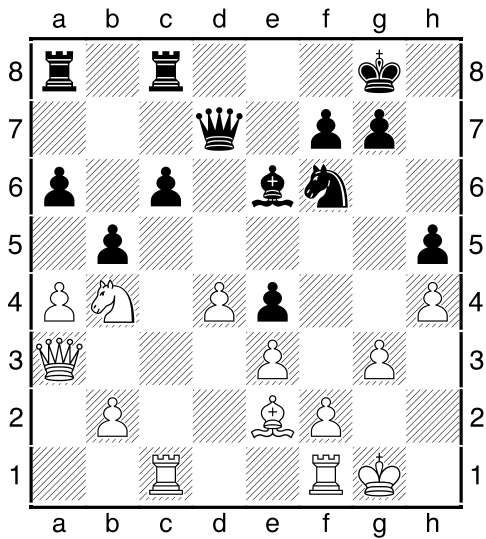


16.g3 [White can give up this miserable pawn: 16.0-0 Q:h4 17.d5 c:d5 18.N:d5 Ne5 19.Nf4 Qg5 20.Rfd1 – material soon to be played out, and possession of open lines give white at least an equal chance] **16...Nf6 17.a4 a6 18.Na2 Rfc8**

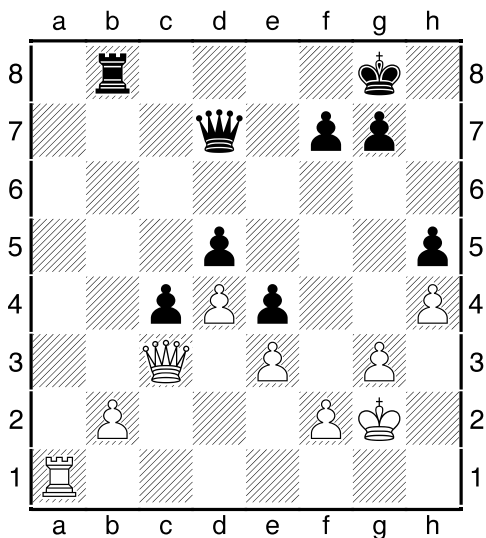


19.0-0?! Guileless castling becomes a significant inaccuracy, which at such a high level can lead to irreversible consequences... [It was necessary first to put pressure on black's weaknesses, such as 19.Nb4 Qd7 20.a:b5 a:b5 21.0-0 Bf5 22.Rc5 Bg4 23.B:g4 Q:g4 24.N:c6 Qh3 25.Rfc1! R:c6 26.R:c6 Ng4 27.Rc8+ Kh7 28.Q:f7 – perfect union of attack and protection puts the opponent on the shoulder] **19...Bf5 20.Nb4**

Be6 21.Qa3 Qd7



Perhaps coming distance to this position, Mamedyarov outlined the fixing flank a4–a5, but only now noticed reply Be6–c4, exchanging bishops and revealing black pieces straight to the white monarch. However, the same scenario awaits us in the game. **22.a:b5 a:b5 23.Qc3 Bc4! 24.B:c4 b:c4 25.Kg2 Rcb8** Threatens Ra4, and again white has no choice. **26.Ra1 R:a1 27.R:a1 Nd5 28.N:d5 c:d5**



The situation cleared up. Further plans are based on the classic principle of two weaknesses. Pressure along line "b" and the light-squared domination on other side (with the possibility of activating the king)

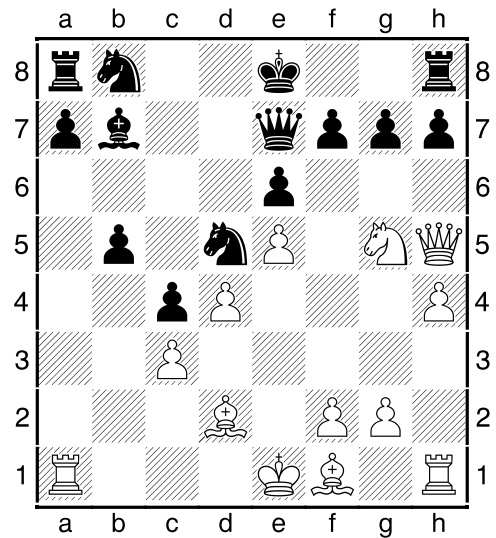
make white's position hopeless. **29.Qd2 Qg4 30.Re1 Qf3+ 31.Kh2 Kh7 32.Qe2 Kg6** Here, at the material equivalent, white conceded defeat. Not premature, because it is impossible to oppose anything to victorious march of the black king. **0-1**

(04) Laznicka,V (2677) - Brunello,S (2615) [D16]

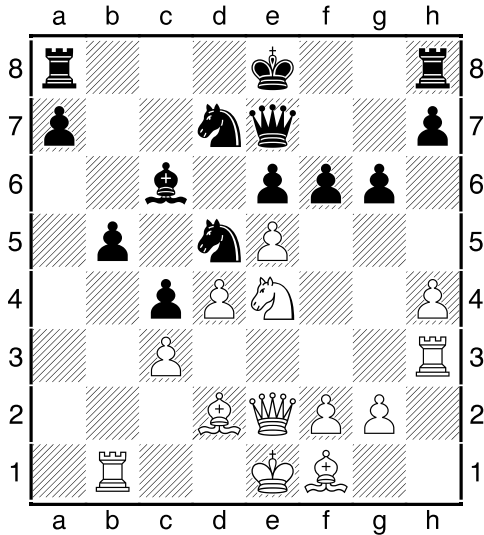
19th European Teams Warsaw POL (2), 09.11.2013

[IM Sitnikov, A]

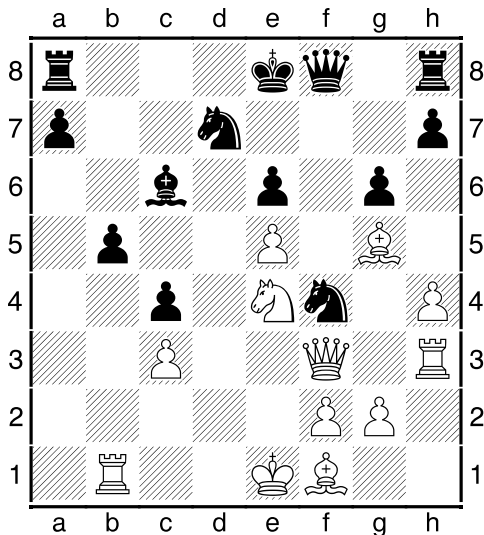
1.d4 d5 2.c4 c6 3.Nf3 Nf6 4.Nc3 d:c4 5.a4 e6 6.e4 Bb4 7.e5 Nd5 8.Bd2 b5 9.a:b5 B:c3 10.b:c3 c:b5 11.Ng5 Bb7 12.Qh5 Qe7 13.h4N



Home "bomb" – found a short way for rook activation. [Used previously 13.Be2 looks sluggish and can not meet the ambitious leader of the white army] **13...Nd7 14.Rb1 Bc6 15.Rh3 g6?!** In such situations, concrete action is needed. Move in the game does not correspond to this principle... [The main transit points for the white pieces: f3, e4. Therefore it was necessary to control them by 15...Nc7! 16.f3 g6 17.Qh6 f6 and black seize the initiative, for example 18.h5 f:g5 19.h:g6 Rg8 20.B:g5 Qf8 21.Q:h7 Rg7 22.Bh6 R:h7 23.g:h7 Qh8 24.Bg7 Q:g7 25.h8Q+ Q:h8 26.R:h8+ Nf8 – two knights here will be stronger than rook] **16.Qe2 f6 17.Ne4**

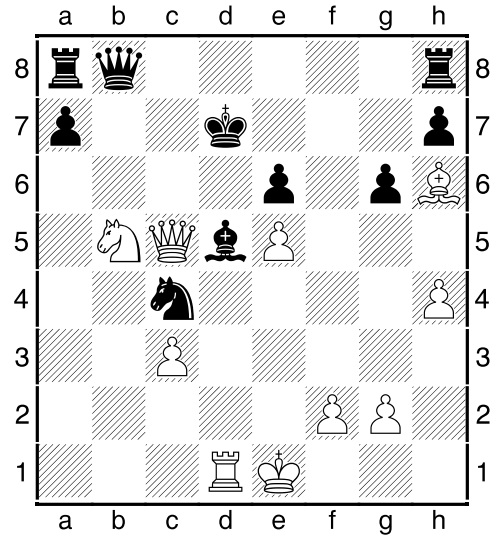


17...f:e5? It seems debut novelty caught black unawares, and the second mistake becomes fatal. [And for good reason, children are taught to castle as soon as possible! After the correct 17...0-0 18.h5 f:e5 19.h:g6 h:g6 20.Bg5 Qg7 21.Bh6 Qe7 22.Bg5 is forced draw by repetition] **18.Bg5 Nf4 19.Qf3 Qf8 20.d:e5**

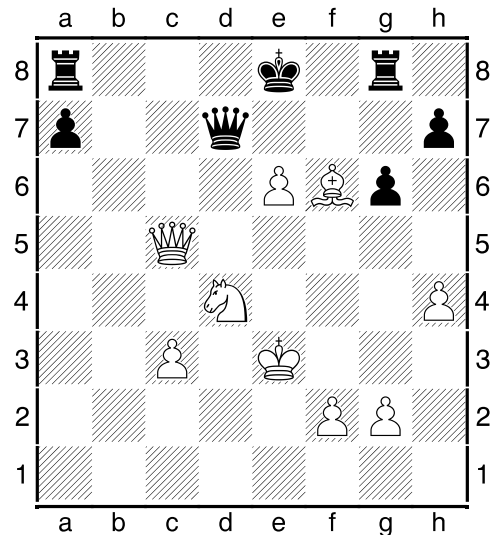


20...N:h3 [Not saved 20...Nd3+ 21.B:d3 Q:f3 22.R:f3 N:e5 23.Nf6+ Kf7 24.Be4 N:f3+ 25.g:f3 B:e4 26.N:e4 a6 27.Rd1 Ra7 28.Be3 Rc7 29.Bb6 Re7 30.Ng5+ Kg7 31.Bc5 – under the enemy fire black bear material losses] **21.Q:h3 Qg8 22.Nd6+ Kf8 23.Bh6+ Ke7 24.Bg5+ Kf8 25.Bh6+ Ke7 26.Qe3 Nb6 27.Qc5 Kd7 28.N:b5 Qb8 29.B:c4!** The signal for a decisive as-

sault... **29...N:c4 30.Rd1+ Bd5**



31.R:d5+ e:d5 32.Q:d5+ Ke7 33.Bg5+ Kf8 34.Bh6+ Ke7 35.Bg5+ Kf8 36.Qc5+ Black monarch nowhere to go. Very depressing impression from sleeping heavyweights on the eighth row... **36...Nd6 37.N:d6 Qb1+ 38.Ke2 Qa2+ 39.Ke3 Qe6 40.Bf6 Rg8 41.Nf5+ Ke8 42.Nd4 Qd7 43.e6**



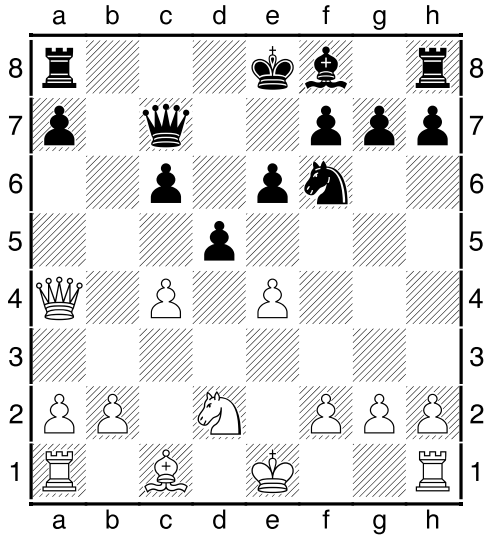
43...Qb7 44.Nb5 1-0

(05) Kovalev,V (2583) - Edouard,R (2653) [C07]

19th European Teams Warsaw POL (2), 09.11.2013

[IM Sitnikov, A]

1.e4 e6 2.d4 d5 3.Nd2 c5 4.Ng3 c:d4 5.N:d4 [Often there is immediate exchange in the center: 5.e:d5 Q:d5 6.Bc4 Qd8 7.0-0 Nc6 8.Nb3 ит.д.] **5...Nc6 6.Bb5 Bd7 7.N:c6 B:c6** [To the more complex (primarily for black) play conducts taking by pawn 7...b:c6 8.Bd3 Bd6 9.Qe2 Qc7 (9...Ne7 10.e5 Bc7 11.0-0 0-0 12.Nf3 Ng6 13.c4) 10.Nf3 Ne7 11.e5 Bc5 12.0-0 h6 13.c4 as black here falls into the straits, and his light-squared bishop is clearly inferior to the activity of his white "brother"] **8.B:c6+ b:c6 9.c4 Nf6 10.Qa4 Qc7**

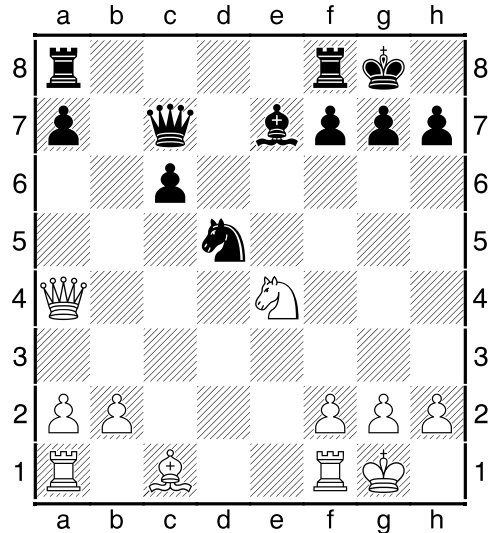


[Worse 10...Qd7 11.e5 and the black knight is hard to find a decent golf retreat]

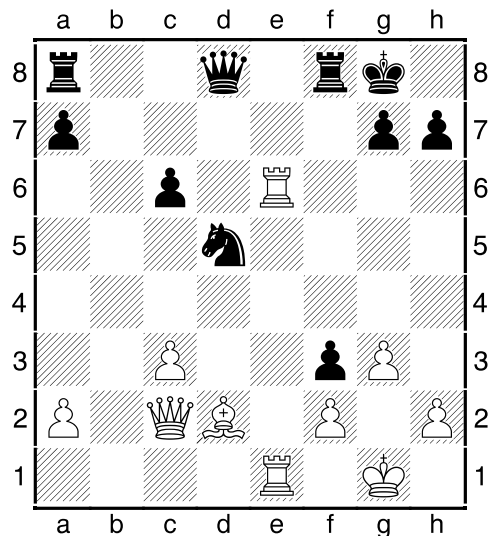
11.c:d5 [I like the white of such way: 11.e:d5!? e:d5 12.0-0 Be7 13.b3 0-0 14.Bb2 maintaining tension and slowly with the exchange on d5, not to intensify the enemy knight and not to simplify his task...]

14...Rab8 (14...Rac8 15.Rac1 Qb7 16.Rfd1 Rfd8 17.Nf1!? Ne4 18.c:d5 c:d5 19.R:c8 Q:c8 20.Ne3 Bc5 21.Bd4 B:d4 22.Q:d4 Nc3 23.Rd2) 15.c:d5 N:d5 16.Nf3 Rb4 17.Qa6, and white has a small but sustainable advantage through c6 pawn

weakness] **11...e:d5 12.0-0 Be7 13.e:d5 N:d5 14.Ne4?!** Prematurely determining the position of a knight. I think the first thing we had to complete the development of pieces: [14.b3! 0-0 15.Bb2 and the game can be reduced to the options discussed in notes to the previous move. Again, white has not too large, but stable advantage] **14...0-0**

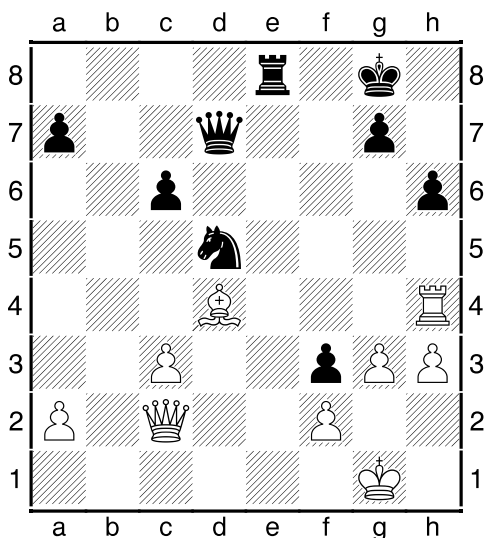


15.Bd2 Here bishop is more passive than b2... **15...Qb6 16.Qc2 f5 17.Nc3 f4 18.Rae1 Bf6 19.Re6 B:c3 20.b:c3 f3 21.g3 Qd8** Queen wants to get to the field h3! But who let queen go? **22.Rfe1**

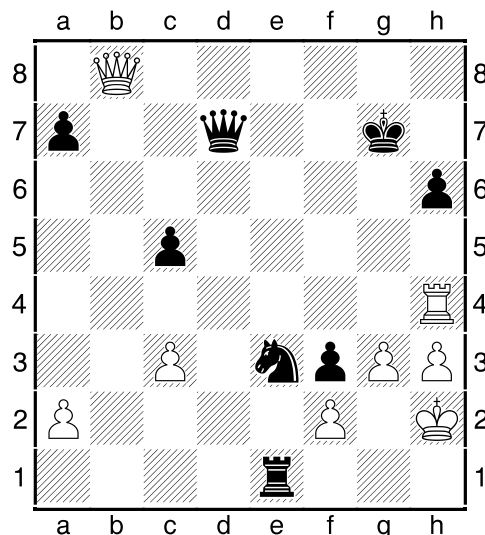


[More precisely, it seems to me, 22.c4! once and for all expelling the black knight

from important outpost d5: 22...Nc7 23.Re4 Qd7 24.Rh4 Qf5 (24...h6 25.Bc3! Ne6 26.Qg6 Rf7 27.Re1 Nf8 28.Qe4±) 25.Q:f5 R:f5 26.Rd4 and despite the apparent equality, a white bishop is clearly stronger than knight ongoing endgame] **22...Nc7** [22...Qd7 faces a multi-faceted move 23.Qd3 it is unclear how black to attack, and exchanges only bring him closer to the hard endgame] **23.Re7 Nd5 24.R7e6 Nc7 25.R6e4!?** White is not going to repeat the moves. Courageous decision, but dangerous, because white has not set a pawn on c4 – and field d5, as a staging for the black pieces, will play a fatal role in the game... **25...Qd7 26.Rh4 h6!** No exchange queens! **27.h3** [27.c4 Ne6 28.Be3 Rad8 29.h3 Rfe8 30.Kh2=] **27...Rae8 28.R:e8 R:e8 29.Be3** [29.B:h6 g:h6 30.Qg6+ Qg7 31.Q:c6 Re1+ 32.Kh2 Re6 33.Q:f3 Rf6 34.Rf4=] **29...Nd5 30.Bd4??**

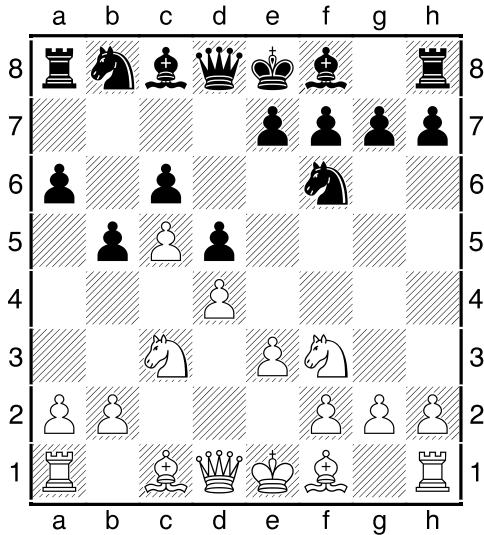


[Position was still suitable for life, and after 30.Qd3 Qe7 31.Bd4 Qe2 32.Qb1 c5 33.B:c5 N:c3 34.Qb4! Rd8 35.Kh2 white kept the dynamic balance] **30...c5!** That's all, the bishop in a trap! **31.B:g7** [The fact that ingenious 31.B:c5 ~~was~~ 31...Re1+ 32.Kh2 Qb5 with the threat of a forced checkmate, besides quite inappropriately the bishop under attack] **31...Re1+ 32.Kh2 Ne3!** The shortest way to the goal! **33.Qb3+ K:g7 34.Qb8**

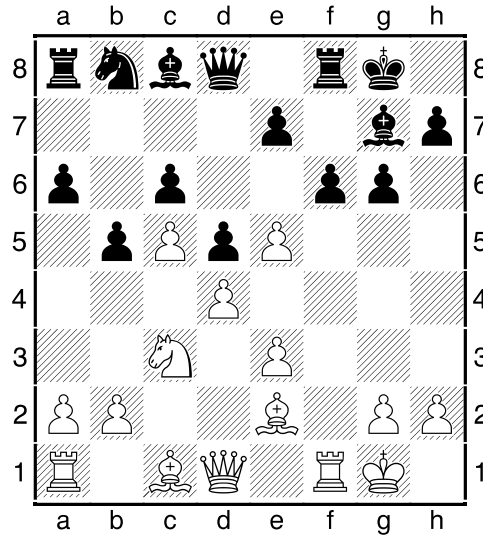


A desperate attempt to counter-attack. What else to do? Had to leave own king in trouble... **34...Rh1+** It is clear that black wins here "anyway". He even calculated a long option winning the queen! Instead, there was fantastic checkmate in 2 moves: [34...Q:h3+!! 35.R:h3 Ng4#] **35.K:h1 Qd1+ 36.Kh2 Nf1+ 37.Kh1 N:g3+ 38.Kh2 Qh1+ 39.K:g3 Qg2+ 40.Kf4 Qh2+ 41.K:f3 Q:b8 0-1**

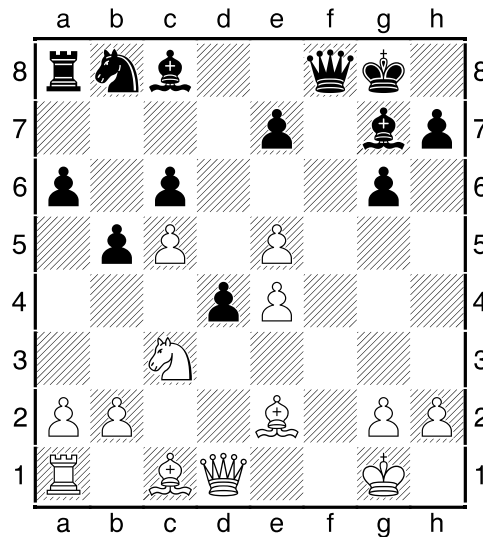
(06) Salgado Lopez,I (2610) - Balogh,C (2630) [D15]
 19th European Teams Warsaw POL (3), 10.11.2013
[IM Sitnikov, A]
1.c4 Nf6 2.Nf3 c6 3.Nc3 d5 4.e3 a6 5.d4
 After some "tricks" rivals have come on territory of Chebanenko option in Slavic defense, very popular recently, thanks to their reliability and durability... **5...b5 6.c5**



6...g6 Theory says such development most appropriate in this position. [At first glance, the most logical in this position would bring bishop: 6...Bg4 but the same "Mrs. Theory" promises white indisputable advantage after a violent maneuver 7.Qb3 Nbd7 8.a4 e5 9.Qa3 White obtains certain benefits: black or forced to give up the line "a" or sacrifice a pawn: 9...b4 10.Q:b4 Rb8 11.Qa3 a5 12.Nd2 g6 13.h3 Bf5 14.Be2 Bg7 but I don't share the optimism of analysts concerning the position of white. His Queen is on the outskirts of the city, the knights have no reference point. In my opinion, black has full compensation for the pawn] **7.Ne5 Bg7 8.Be2** [More active 8.f4 encountered in a theoretically important game Caruana–Giri, 2012, black in the opening has a good balance of forces: 8...a5 9.Be2 Qc7 10.0-0 h5! 11.h3 Bf5 12.Bd2 Nbd7 e4 under the control of black and white only active piece – knight e5 – will be exchanged soon] **8...0-0 9.0-0 Nfd7?!** Artsy maneuver. Knight on d7 takes bread from his "colleague" who is forced to stand idle at home (on b8). It was logical to protect c6–pawn by queen, and then exit other knight on d7. **10.f4 N:e5 11.f:e5 f6**

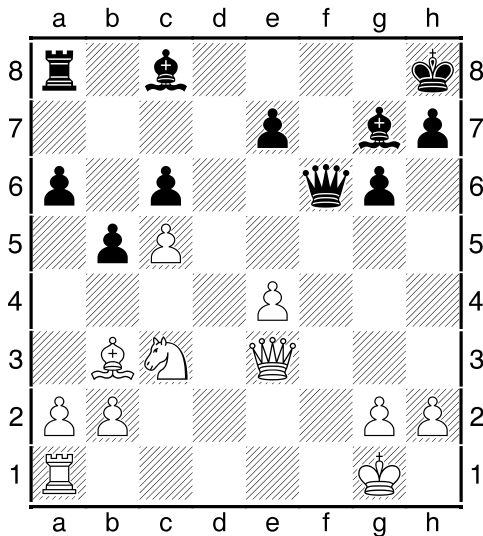


12.e4? White "fuel the fire" – in vain! Actually he destroys his own pawn phalanx in the center and the advantage goes to black. [Better to change pawns: 12.e:f6! e:f6 (12...R:f6?! 13.R:f6 e:f6 14.e4! b4 15.Na4 d:e4 16.Nb6 Ra7 17.Qb3+ Kh8 18.Be3 a5 19.Rd1 Qe8 20.d5!; 12...B:f6 13.e4! d:e4 14.Be3! Bf5 15.a4! Nd7 16.a:b5 a:b5 17.Qb3+ e6 18.R:a8 Q:a8 19.g4!) 13.e4 b4 14.Na4 d:e4 15.Qb3+ Kh8 16.Bf4! a5 (16...Q:d4+ 17.Kh1 f5 18.Rad1 Qf6 19.Nb6 Be6 20.Qg3!) 17.Nb6 Ba6! 18.B:a6 R:a6 19.B:b8 R:b6 20.Bd6! Re8 21.c:b6 Q:d6 22.Qc4 white has good chances to win] **12...f:e5! 13.R:f8+ Q:f8 14.d:e5 d4!**

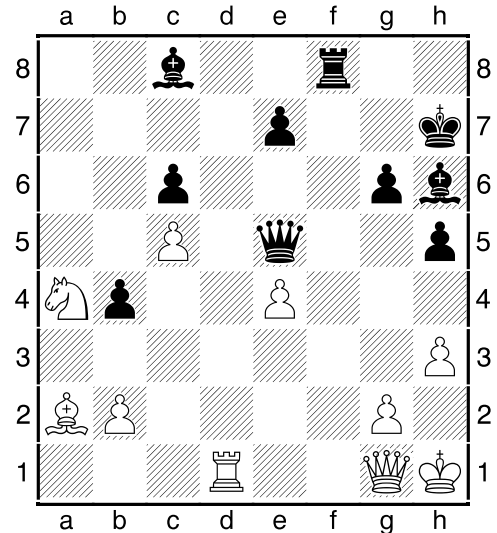


[It would be inaccurate 14...e6?! 15.Be3

Bb7 where after consolidating black starts eating: pawn e5 ready to dinner. But in this option black embarrass quite pitiable position of the bishop on b7.] **15.Q:d4 Nd7 16.Bd1?!** Is too slow. White has not so good position for a relaxing maneuvering on the first horizontal. [Better 16.Be3 N:e5 17.Rf1 Qe8 18.Qd2 Bg4 but here the advantage on the black side – thanks largely to excellent knight location on e5.] **16...N:e5! 17.Bb3+ Kh8 18.Be3 Ng4 19.Qd3 N:e3 20.Q:e3 Qf6!**



Black has achieved the benefits of two bishops, especially strong dark-squared one, deprived opponent. Besides, the white c5 pawn is weak. Reached a stage of advantage implementation. **21.Rf1 Qe5!** [Second relaxed – the enemy on fun: 21...Qd4?? 22.Rf8+ , black loses Queen and checkmated!] **22.h3 a5! 23.Rd1 Ba6** That's the second bishop attached. Black steadily increasing pressure on both flanks. White can not create a threat to the black monarch. They are forced to "mark time" on the ground and wait for visit "black landing". **24.a3 Rf8 25.Kh1 h5! 26.Bc2 Kh7 27.Bb1 Bc8 28.Ba2 Bh6 29.Qg1 b4 30.a:b4 a:b4 31.Na4**



To all the woes of white added "deserters" a4 and a2. Army Commander even went to g1, to cover king! Wins for black virtually any smart move. Looks good, for example, the approach of queen – Qg3! But black choose the combination way: **31...B:h3! 32.Qh2** [After 32.g:h3 Q:e4+! 33.Qg2 Rf3 34.Be6 g5 the inevitable g5–g4 and the emergence of black rook on h3 – white, despite the extra knight, can only resign] **32...Q:h2+ 33.K:h2 Bg4 34.Rd3 Rf1 35.g3 Bf3 0-1**

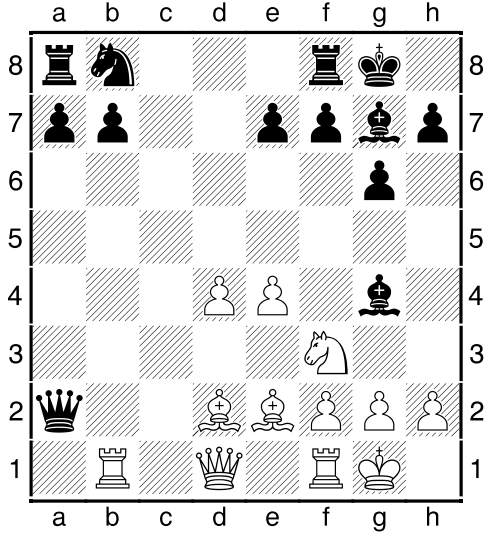
(07) Radjabov,T (2715) - Swiercz,D (2627) [D85]

19th European Teams Warsaw POL (3), 10.11.2013

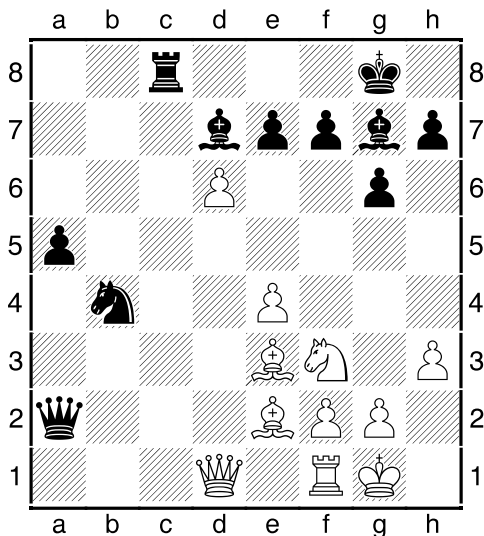
[IM Sitnikov, A]

And now a little about sad things. Many chess battles at the highest level are now in a similar scenario: the opening is a rivalry teams and home computer analyzes. Global reevaluation of opening variations and significant strengthening of old steel samples relative rarity. Basically now little strengthening appear in the opening – small refinements, leading eventually the beginning of the game – passing the mid-game – straight to the endgame, often also about equal. That's where the real game begins! With continuous study of debut books, professional chess player sometimes isn't able to solve even the simplest problems: for example, to save slightly worse rook endgame! On this sad

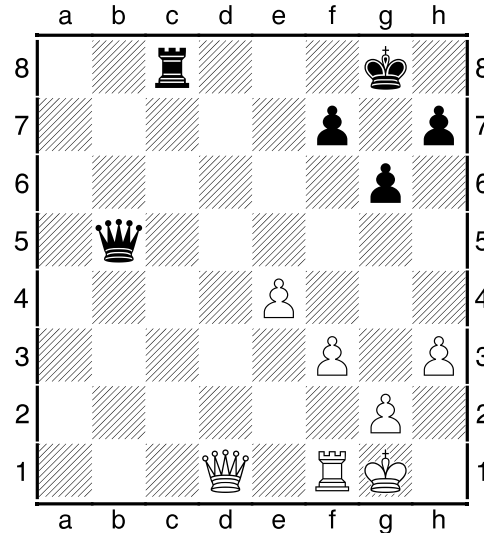
occasion tells the game presented below.
1.d4 Nf6 2.c4 g6 3.Nc3 d5 4.c:d5 N:d5
5.e4 N:c3 6.b:c3 Bg7 7.Nf3 c5 8.Rb1 0-0
9.Be2 c:d4 10.c:d4 Qa5+ 11.Bd2 Q:a2
12.0-0 Bg4



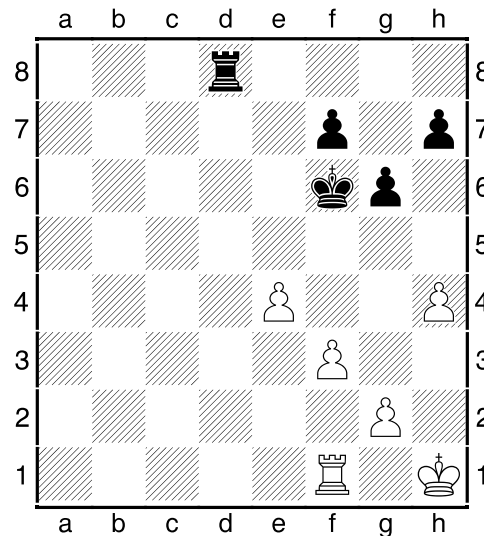
In front of us set theoretical discussion in Gruenfeld. As we know, in all lines black confidently keeps balance! **13.Be3 Nc6**
14.R:b7 Rab8 15.Rc7 Rfc8 16.R:c8+ R:c8
17.h3 Bd7! Right, to save the bishop. However, all this has long been known. [17...B:f3 18.B:f3 N:d4?? 19.B:d4 Rd8 20.Qa1+–] **18.d5 Nb4** [If 18...Ne5 19.Nd2! e6 20.Qb3 Q:b3 21.N:b3 e:d5 22.e:d5 Bf5 23.Rd1 central white pawn can put opponent into trouble] **19.d6 a5**



[Interesting option 19...e:d6 20.Q:d6 B:h3 21.Q:b4 Q:e2 22.Re1 Qa6 23.g:h3 Bc3 24.Qb1 B:e1 25.Q:e1 looks pretty dangerous for black because of his little "naked" King] **20.d:e7 Qe6! 21.Bb6 Q:e7 22.B:a5 Nc6 23.Bb6 Ne5 24.N:e5 B:e5 25.Bd4 Bc6 26.B:e5 Q:e5 27.f3 Bb5 28.B:b5 Q:b5**

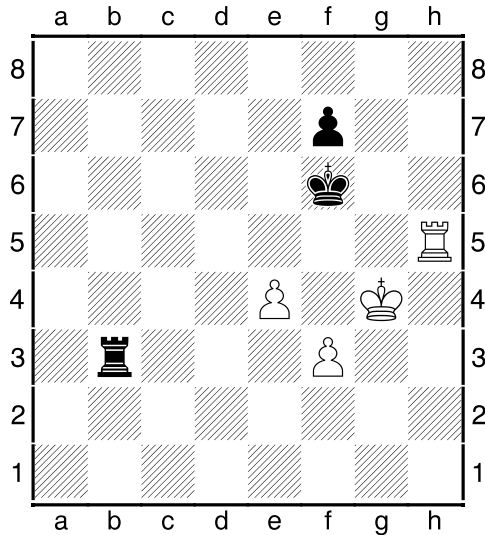


Perhaps here is out of analyzes of both players, and independent game begins! Both sides have achieved what they wanted: white – position with an extra pawn without any risk of losing and opportunity to rack the enemy for at least 100 moves; black, in turn, is expected to gently equalize and make draw. Let's see who is more successful in carrying out his task. **29.Qd2 Qb6+ 30.Kh1 Rd8 31.Qg5 Kg7 32.h4 Qf6 33.Q:f6+ K:f6**

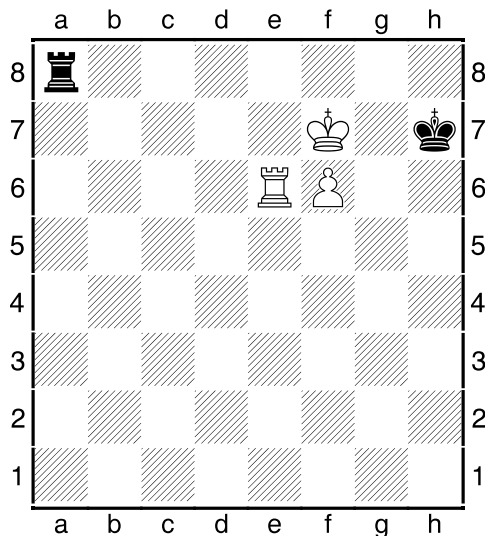


Queens disappeared from the board, and we see a hundred times painted in manu-

als draw endgame! But the game continued – it is necessary to check the opponent! **34.Rc1 h5 35.Kh2 Rd2 36.Kg3 Ke6 37.Rf1 Ra2 38.Rf2 Ra1 39.Kf4 Kf6 40.Rd2 Ra5 41.Rd7 Ra2 42.g3 Ra3 43.Rb7 Kg7 44.Rb6 Rc3 45.Ra6 Rb3 46.Ra5 Rc3 47.Rg5 Ra3 48.Rd5 Rb3 49.g4 h:g4 50.K:g4 Kf6 51.h5 g:h5+ 52.R:h5**



Already appeared quite simple rook ending "two pawns vs one" where any skilled chessplayer should be able to make draw! **52...Ke6 53.f4 f6 54.Ra5 Rb4 55.f5+ Kf7 56.Ra7+ Kg8 57.Kh5 R:e4 58.Kg6 Rg4+ 59.K:f6 Rb4 60.Ra8+ Kh7 61.Re8 Rb1 62.Kf7 Ra1 63.f6 Ra7+ 64.Re7 Ra8 65.Re6**



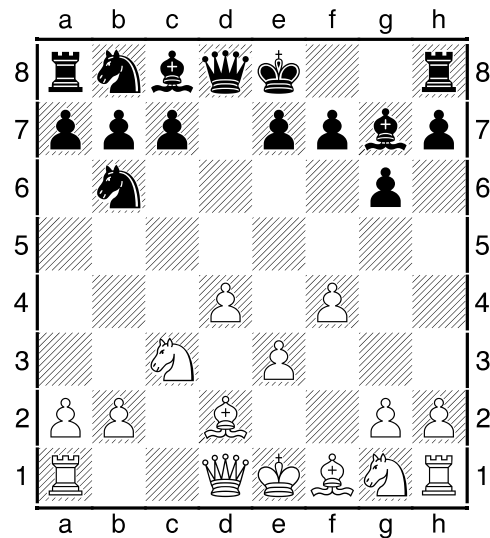
65...Ra7+?? Here is second inattention! Or simple ignorance. How many times in articles and books considered tragicomic game Capablanca vs Menchik where errors of world champions followed one after another... [Just in case, let me remind that both 65...Rb8! ; and 65...Kh6! 66.Re2 Ra7+ 67.Re7 Ra8 68.Rd7 Kh7 led to a simple draw...] **66.Kf8!** Now white is easy to promote his passed into queen! **66...Ra8+ 67.Re8 Ra6 68.f7 Ra7 69.Re1 Ra8+ 70.Ke7 Ra7+ 71.Kf6 Ra6+ 72.Re6 Ra8 73.Re8 Ra6+ 74.Ke5 1-0**

(08) Gunina,V (2509) - Lagno,K (2542) [D85]

19th European Teams Women Warsaw POL (9), 17.11.2013

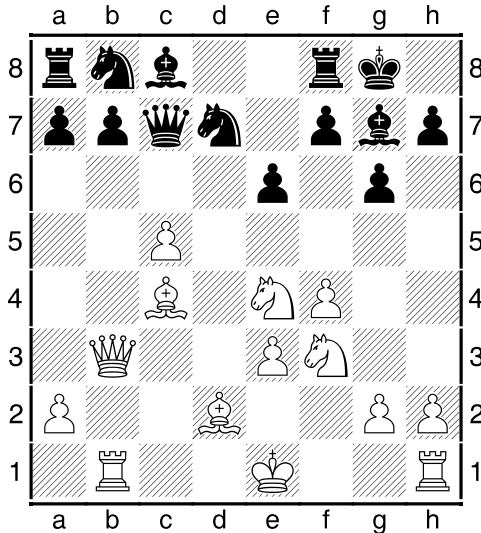
[IM Sitnikov, A]

1.d4 Nf6 2.c4 g6 3.Nc3 d5 4.c:d5 N:d5 5.Bd2 Nb6 6.e3 Bg7 7.f4

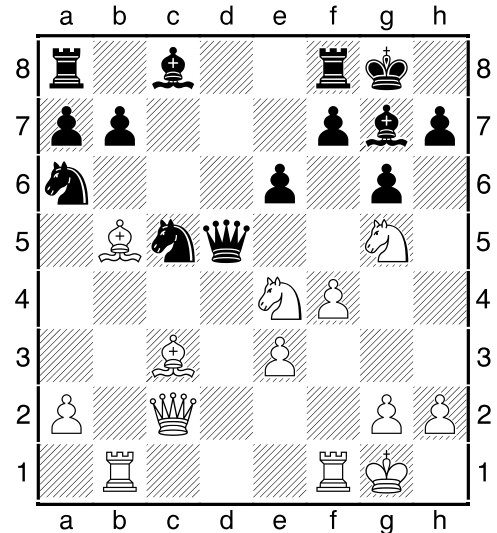


A recent novelty – the first time played by Peter Svidler against Boris Gelfand this spring. We must pay tribute to the ingenuity of Boris who was able to understand the situation and passed the test well. Subsequent practice also didn't reveal a significant advantage for white. Of the six games only one victory by Vitaliy Bernadskiy – he sent the horse to e4–f2 and attacked the opponent at the appropriate time... **7...c5N** But this sudden attempt to "get the horns" is hardly commendable. However, at this moment the Ukraine team has already

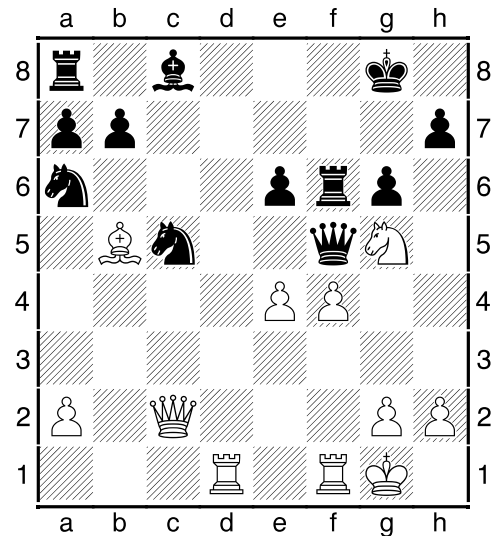
been guaranteed the gold medals, so Katerina Lagno allows herself such liberties. **8.d:c5 N6d7 9.Ne4** Could even play on material keeping by Na4 or b2-b4, as a direct refutation is not visible... **9...B:b2 10.Rb1 Bg7 11.Nf3 0-0 12.Bc4 Qc7 13.Qb3 e6**



[In case of 13...N:c5 14.N:c5 Q:c5 15.Ng5 e6 16.Bb4 Qc7 17.B:f8 B:f8 18.0-0 Nc6 19.Rbc1 Bd7 20.Rfd1 Rd8 21.Ne4 Be7 22.Qc3 full compensation is not visible] **14.0-0 Qc6 15.Nfg5 Na6** [White laid up in the bosom a promising piece sacrifice: 15...h6 16.B:e6! f:e6 17.N:e6 Kh7 18.N:f8+ N:f8 19.Nd6 Na6 20.Bc3 N:c5 21.Qf7 Qd7 22.Q:g7+ Q:g7 23.B:g7 K:g7 24.Rfc1 Nfe6 25.N:c8 R:c8 26.R:b7+ with strong passed pawns and a good chance to win] **16.Qc2 Nd:c5 17.Bb5 Qd5?!** [Look for equality after 17...Qc7 18.N:c5 N:c5 19.Bb4 b6 20.Ne4 Rd8 21.N:c5 a5 22.Ba3 b:c5 23.Q:c5 Q:c5 24.B:c5 Bb7=] **18.Bc3**



18...f6?! Black expected to finally drop the enemy pieces, but didn't notice response tactical shot. [Better was 18...B:c3 19.N:c3 Qd8 – for a pawn white has obvious initiative, but there is still a long struggle] **19.N:f6+ B:f6 20.B:f6 R:f6 21.Rbd1 Qf5 22.e4**

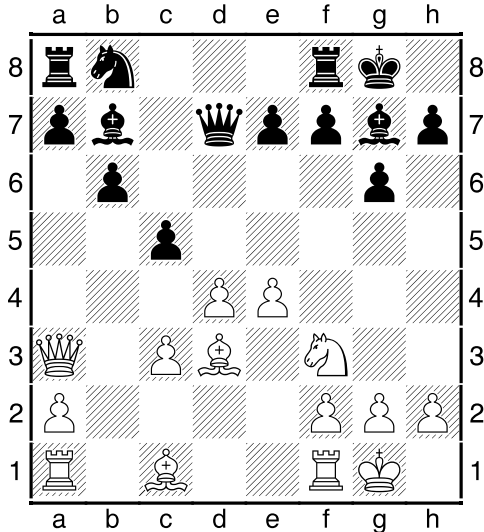


22...Qg4? In what slums skidded queen... [Even after the persistent 22...N:e4 23.N:e4 Rf8 24.Qc4 b6 25.Kh1 Nc5 26.Nd6 Qh5 27.Rd4 black plays very hard, because of threat f4-f5 above the fortress with a strong attack] **23.Rd8+ Kg7 24.Be2 Qh4 25.g3 Qh6 26.B:a6 N:a6 27.R:c8 Rf8 28.Qb2+ Kg8 29.R:a8 1-0**

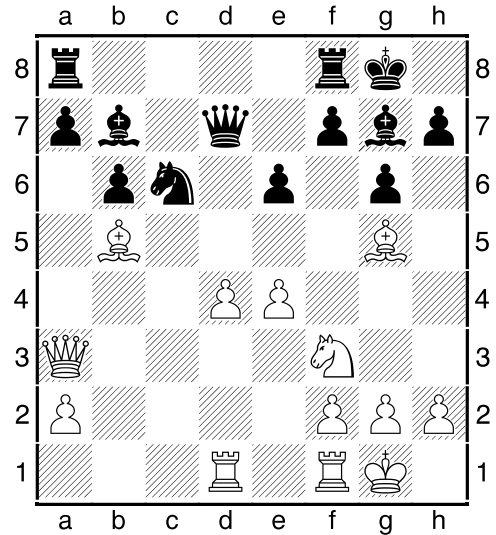
(09) Vishnu,P (2505) - Popov,I (2652)
[D85]

Chennai Grand Master International Open
 Nehru Stadium, Chennai (8), 20.11.2013
[IM Sitnikov, A]

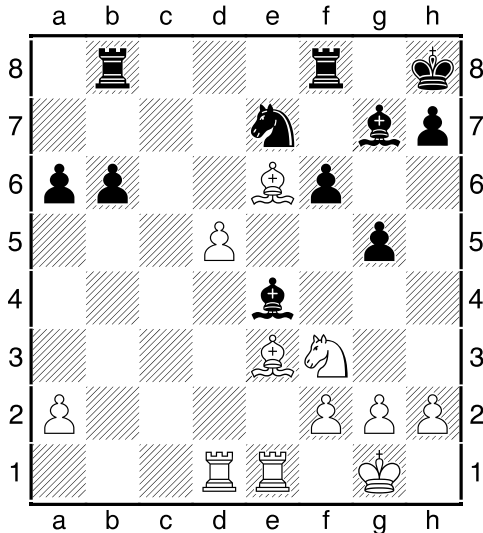
1.d4 Nf6 2.c4 g6 3.Nc3 d5 4.c:d5 N:d5
5.e4 N:c3 6.b:c3 Bg7 7.Qa4+ Qd7 8.Qa3
 Only black bishop gone to g7, the white
 Queen occupies a convenient field on the
 edge of the board. Here she performs sev-
 eral functions: temporarily difficult oppo-
 nent undermining c7-c5, binds enemy
 pieces to pawns a7 and e7, covers weak
 pawns a2 and c3. Let's see how the rest of
 the comrades will support such an em-
 ployment initiative... **8...b6 9.Nf3 Bb7**
10.Bd3 0-0 11.0-0 c5



12.Bg5!N Powerful novelty puts the oppo-
 nent into a very unpleasant situation...
 [When met earlier 12.Be3 e6 13.Rfd1 c:d4
 14.c:d4 Nc6 15.Rac1 Rac8 16.Bb5 Qe7
 black managed to neutralize the sword of
 Damocles hanging over his head, and
 achieved good game / Szeberenyi, A
 (2366) – Howell, D (2340) / Budapest
 FS12 IM 2004] **12...e6 13.Rad1 c:d4**
14.c:d4 Nc6 15.Bb5



And now, unlike the above-mentioned
 game, black cannot offer exchange of
 Queens, and the white pawn rapidly rams
 enemy ranks... **15...f6** [Even if more re-
 sistant defense 15...a6 16.Ne5 Qc7
 17.B:c6 B:c6 18.N:c6 Q:c6 19.d5 e:d5
 20.e:d5 Qd7 21.Rfe1 Rfe8 22.d6 R:e1+
 23.R:e1 Re8 24.R:e8+ Q:e8 25.Be7! Qb5
 26.g3 Qe2 27.Kg2 Qe4+ 28.Qf3 Q:f3+
 29.K:f3 Bf8 30.Ke4 f5+ 31.Kd5 B:e7
 32.d:e7 Kf7 33.Kc6 K:e7 34.K:b6 white
 wins] **16.Be3?!** [Material conquest prom-
 ised 16.d5 e:d5 17.e:d5 Qe7 18.Bc1!]
16...a6 17.Ba4 Qe7?! [Better was 17...b5
 18.Bb3 Ne7 19.d5 e:d5 20.e:d5 Nf5 21.Bc5
 Rfe8 22.d6+ Kh8 23.Bd5 B:d5 24.R:d5 and
 white still have to overcome some tech-
 nical reefs towards the victory] **18.Q:e7**
N:e7 19.Bb3 B:e4 20.B:e6+ Kh8 21.d5
Rab8 22.Rfe1 g5



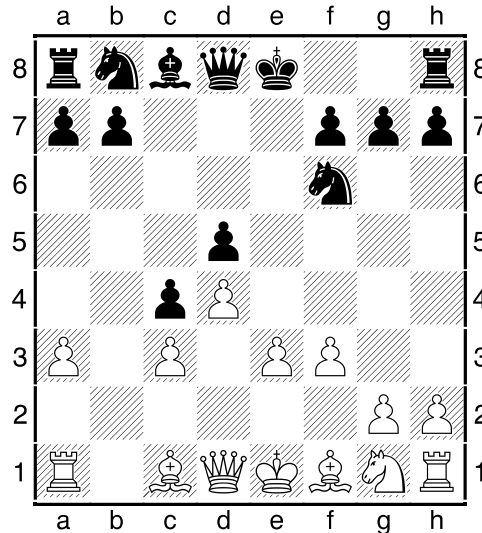
[In case of 22...Nf5 23.Bf4 B:f3 24.g:f3 Rb7 25.d6 Bh6 26.B:h6 N:h6 27.Rc1 Nf7 28.Rc8 Kg7 29.R:f8 K:f8 30.Bc8 Ra7 31.d7 dark knight fails] **23.Bf4! B:f3 24.B:b8 B:d1 25.Bd6 N:d5 26.B:f8 B:f8 27.B:d5 Bg4 28.Re8 Kg7 29.Ra8 a5 30.Ra7+ Kg6 31.Bg8 1-0**

(10) Anand,V (2775) - Carlsen,M (2870) [E25]

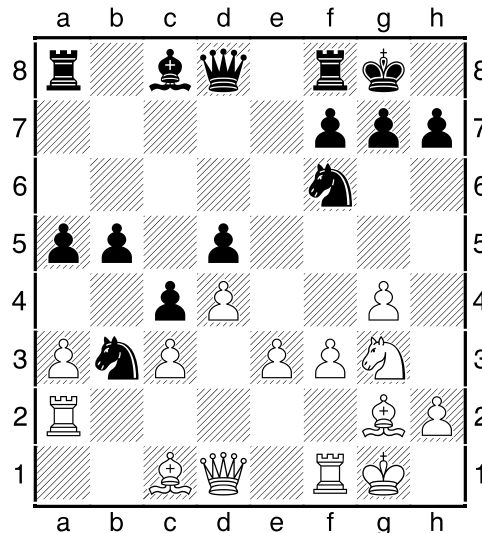
World Ch Chennai (9), 21.11.2013

[IM Sitnikov, A]

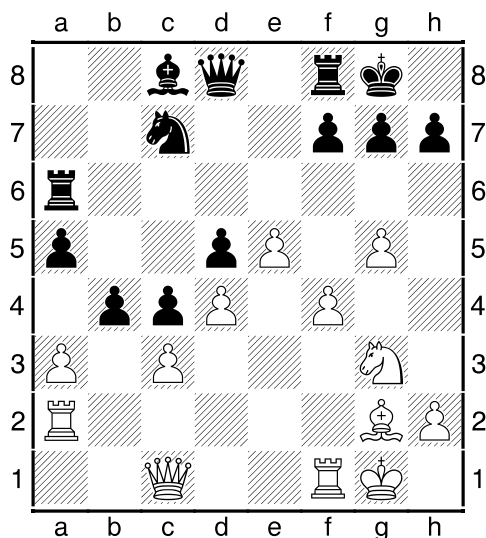
Let's see a fantastic battle of the world championship match, which had a huge sporting value! **1.d4 Nf6 2.c4 e6 3.Nc3 Bb4 4.f3** On the board – the Zemish option in Nimzo-Indian defense, which is now living a second youth... **4...d5 5.a3 B:c3+ 6.b:c3 c5 7.c:d5 e:d5** [Met before 7...N:d5 8.d:c5 Qa5 (8...f5 9.Qc2 Nd7 10.e4 f:e4 11.f:e4 N5f6 12.c6 b:c6 13.Nf3 Qa5 14.Bd2 Ba6 15.c4 Qc5 16.Bd3 Ng4 17.Bb4 Qe3+ 18.Qe2 0-0-0 19.Q:e3 N:e3 20.Kf2 Ng4+ 21.Kg3 Ndf6 22.Bb1 h5 23.h3 h4+ 24.N:h4 Ne5 25.Nf3 Nh5+ 26.Kf2 N:f3 27.K:f3 e5 28.Rc1 Nf4 29.Ra2 Nd3 30.Rc3 Nf4 31.Bc2 Ne6 32.Kg3 with a little advantage for white) **9.e4 Ne7 10.Be3 0-0 11.Qb3 Qc7 12.Bb5 Nec6 13.Ne2 Na5 14.Qb4 e5 15.0-0 Be6?! 16.Nd4! e:d4 17.c:d4 Nbc6 18.Qc3 Ne7 19.Rfd1 Rad8?! 20.Bf2 a6 21.Bg3 Qc8 22.Bf1 b6 23.Rab1 Nb3 24.R:b3 B:b3 25.Q:b3 b:c5 26.d5+- and white won] **8.e3 c4!****



And this is the fruit of Carlsen homework! He makes difficult to exit the white bishop on usual field d3 and creates the precondition for the rapid pawn onset on the queenside by b5, a5 and b4. I note that the basic plan considered in this position was castling, then b6, Ba6 with exchange light-squared bishops. But in this case white has a clear play: preparation e3-e4. **9.Ne2** [Immediate 9.e4 isn't good for white: 9...d:e4 10.B:c4 0-0 11.f:e4 N:e4 12.Nf3 N:c3 13.Qd3 b5 14.Ng5! Qe7+ 15.Be3 Bf5! 16.Q:f5 Q:e3+ 17.Kf1 g6 18.B:f7+ Kg7 19.Ne6+ Kh6 20.Re1!? Q:e1+ 21.K:e1 g:f5 22.N:f8 Nc6 23.Ne6 Ne4!? 24.Rf1 Nd6 25.R:f5!! N:f5 26.g4 Rg8 27.B:g8 Nf:d4 with draw] **9...Nc6 10.g4** [10.Ng3 faces 10...h5, and the knight feels uncomfortable] **10...0-0 11.Bg2 Na5 12.0-0 Nb3 13.Ra2 b5 14.Ng3 a5!**

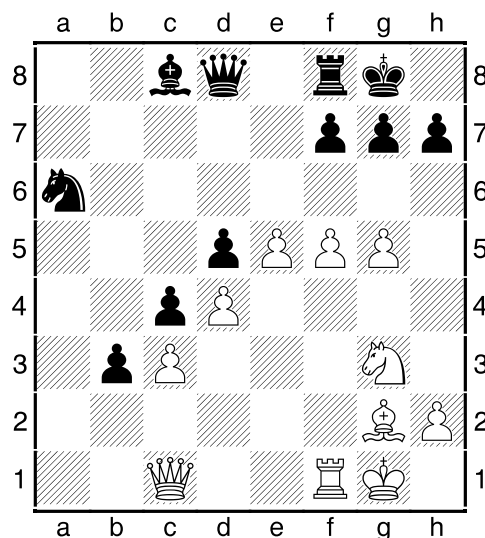


The game is "race"! Black is noticeably succeeded! He is only to protect the rook a8 and "push" b5–b4. **15.g5** [Looks tempting 15.e4 but after 15...d:e4 16.Bg5 h6 17.B:f6 Q:f6 18.f:e4 Qb6 black has excellent counterplay, clearly ahead of the opponent] **15...Ne8 16.e4 N:c1** Hurry in this exchanging black easier opponent play. In this case, the knight b3 is more important piece than the bishop c1 : [16...Nc7 17.Be3 Ra6 18.Qe1 b4 19.c:b4 Qe7!?f] **17.Q:c1 Ra6 18.e5 Nc7** Fearless move! Black "plays with tiger", allowing the opponent to advance infantryman 'f' as far as possible! [Black had worthy alternatives: 18...b4!? 19.a:b4 a:b4 20.R:a6 B:a6 21.c:b4 Qb6 22.Qc3 Nc7 23.f4 Rb8; and 18...g6!? 19.f4 Ng7 20.Rb2 Rb6 21.Qb1 Qd7 22.f5 N:f5 23.Bh3 Qe7 24.B:f5 B:f5 25.N:f5 g:f5 in both cases black has no problems] **19.f4 b4**

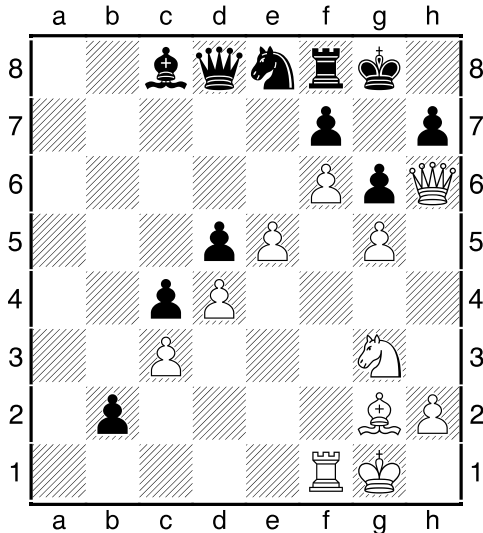


20.a:b4?! Looks like a significant concession. [Not sure whether it was necessary to open the queenside, change rooks... It was interesting 20.a4!? with the idea to double the rooks on the line 'f' and gradually "ram" refuge of the black king. Here's an example, showing that defense is not so easy for black: 20...b3 21.Raf2 Bd7 22.f5 B:a4 23.f6 g6?! 24.Qf4 Re8 25.Qh4 Ree6 26.Nf5! g:f5 27.Bh3 Kh8 28.B:f5 Qg8 29.Rf3 Bd7 30.Rg3+- , and the next move breakthrough g5–g6! brings victory] **20...a:b4 21.R:a6 N:a6 22.f5** Not being distracted over the queenside! Oh, it would have be-fore, but without the exchange of rooks!..

22...b3!



Three white pawns on the fifth row – the terrible phenomenon, so black "pulled out of the sleeve" his trump card – far advanced, protected passed pawn! **23.Qf4** Anand thought for a long time and decided to bring the queen closer to future events. But it wasn't necessary. Pawn b3 now cracked open the road to a fantastic career! [In my opinion, there was more strong to send another pawn 'h' to the fifth row: 23.h4!? Nc7 24.h5 Here black easily frightened armada and mistake, practically no counterplay. This was a good practical chance for Anand... 24...g6!? 25.f:g6 h:g6 26.Rf6 with unclear play] **23...Nc7 24.f6 g6 25.Qh4 Ne8** Strictly only move! [Neglect 25...Be6?? 26.Qh6 Ne8 27.Rf4 met severe punishment: black received checkmate] **26.Qh6** [Many commentators have pointed out that 26.Ne2 gave white advantage. This is not entirely true. Thanks b3 pawn black has counterplay enough for a draw, but the practical chances there were a lot for white... 26...Be6 27.Nf4 Qa5 28.Bh3 B:h3 29.Q:h3 b2 30.e6 Nd6 31.N:g6 h:g6 32.Qh6 Nf5 33.R:f5 b1Q+ 34.Rf1 Q:f1+ 35.K:f1 Qa1+ 36.Kg2 Qb2+ 37.Kg1=] **26...b2**



And again, the only sequel! Black went on the edge! **27.Rf4** White allows the enemy to freely promote the queen, even with

check! I do not know whether that occurred earlier in the world championships? **27...b1Q+** **28.Nf1??** A terrible blunder! Champion calculated a long effective option, but didn't notice the knockout denial at the first move! [Close by bishop, Anand could count on salvation in this puzzling game: 28.Bf1 Qd1 29.Rh4 Qh5 30.N:h5 g:h5 31.R:h5 Bf5 32.g6! B:g6 33.Rg5! N:f6 34.e:f6 Q:f6 35.R:d5 Qf3 36.Rc5 Q:c3 37.R:c4=] **28...Qe1!** [But not 28...Qd1? 29.Rh4 Qh5 30.R:h5 g:h5 31.Ne3 Be6 32.B:d5 B:d5 33.Nf5 – this option calculated Anand!] **0-1**

Editorial staff:

- IM Anton Sitnikov (ELO 2497)
- IM Timofey Iljin (ELO 2507)
- IM Anatoliy Polivanov (ELO 2356)
- IM Tarlev Konstantin (ELO 2520)
- IM Sergey Perun (ELO 2345)
- Dmitry Posokhov (ELO 2294)

Chief editor Roman Viliavin (ELO 2248)
email: chesszone@ya.ru