

ChessZone Magazine



Table of contents: # 10, 2013

Games	4
(01) Ponkratov,Pavel (2618) - Matlakov,Maxim (2682) [D79]	4
(02) Matlakov,Maxim (2682) - Eljanov,Pavel (2729) [E35].....	5
(03) Akopian,Vladimir (2684) - Bernadskiy,Vitaliy (2527) [B12].....	6
(04) Zhigalko,Andrey (2615) - Areshchenko,Alexander (2714) [B90]	7
(05) Zhigalko,Andrey (2615) - Papaioannou,Ioannis (2633) [B90].....	8
(06) Vitiugov,Nikita (2729) - Halkias,Stelios (2568) [D31]	10
(07) Bartel,Mateusz (2638) - Sjugirov,Sanan (2635) [B52].....	11
(08) Morozevich,Alexander (2734) - Laznicka,Viktor (2666) [A25]	12
(09) Gunina,Valentina (2506) - Gaponenko,Inna (2400) [D22]	15
(10) Kosteniuk,Alexandra (2495) - Hou,Yifan (2621) [B82]	16
Editorial staff:.....	17

Dear readers!

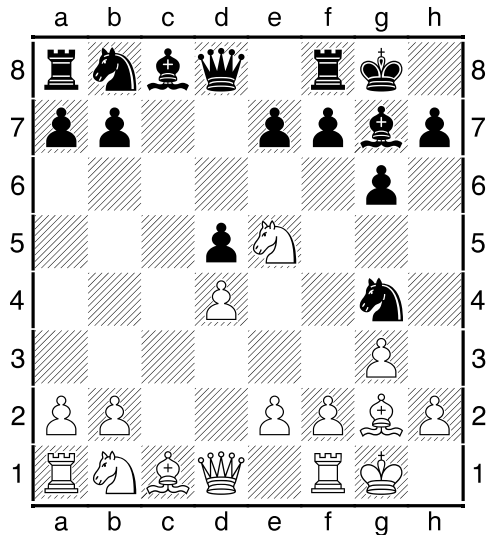
**ChessZone Magazine is open for your advertising materials.
We have various ad packages at affordable rates!**

**We're also interested in cooperation with advertising agencies,
and could offer great commissions for anyone
who could bring an advertisers to us.**

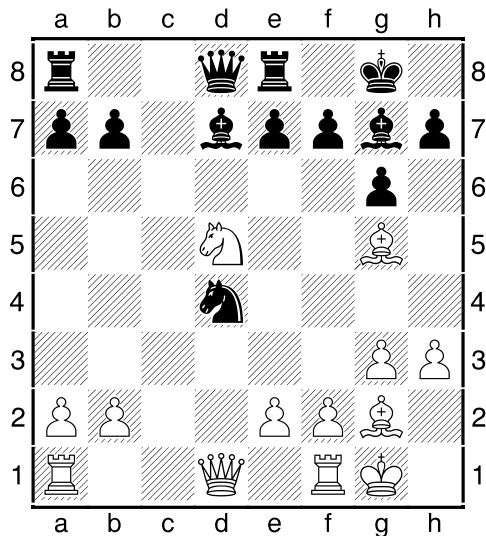
**Please contact us for details
chesszone@ya.ru**

Games

(01) Ponkratov,Pavel (2618) - Matlakov,Maxim (2682) [D79]
 M.Chigorin Memorial 2013 St. Petersburg (6), 10.10.2013
[IM Sitnikov, A]
1.d4 Nf6 2.c4 g6 3.g3 c6 4.Nf3 Bg7 5.Bg2 0-0 6.0-0 d5 7.c:d5 c:d5 8.Ne5 Ng4!

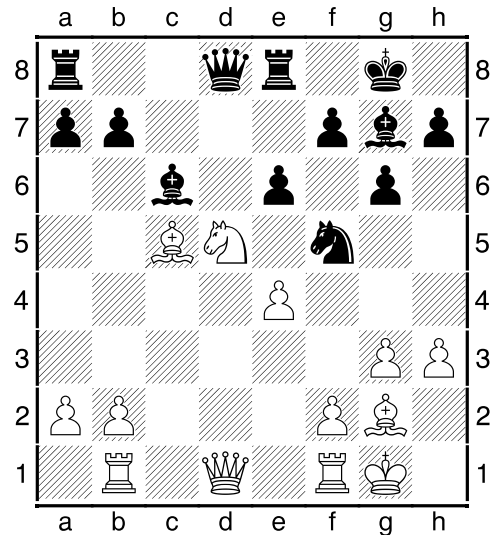


9.N:g4 B:g4 Such simple way black makes it clear who is the boss. Now at symmetrical position an extra tempo in development is on the black side, so white must demonstrate accuracy. **10.Nc3 Nc6 11.h3 Bd7 12.N:d5 N:d4 13.Bg5 Re8**

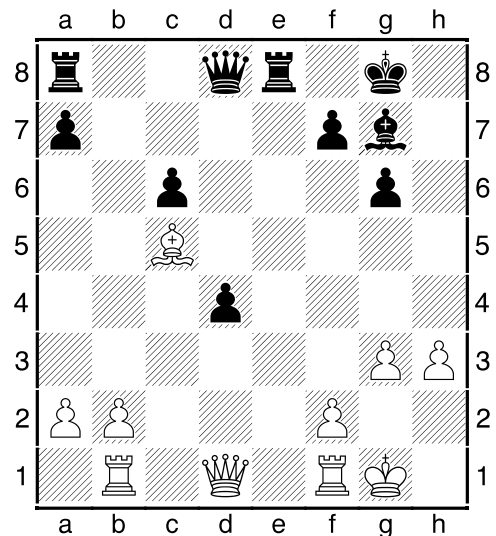


14.Be3N It was logical 14. Rc1 and 15. e4

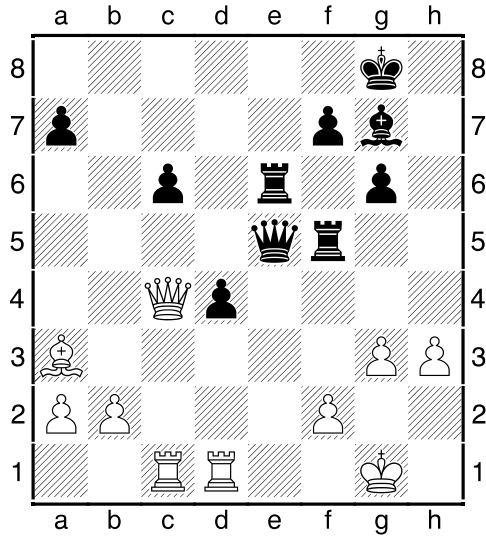
for strengthening the knight in the centre, and the bishop can be kept on the active position until the kick... **14...Nf5 15.Bc5 Bc6** Confrontation of light-squared bishops leads to neutrality on the big diagonal, but on the other one black bishop dominates. **16.Rb1 e6 17.e4**



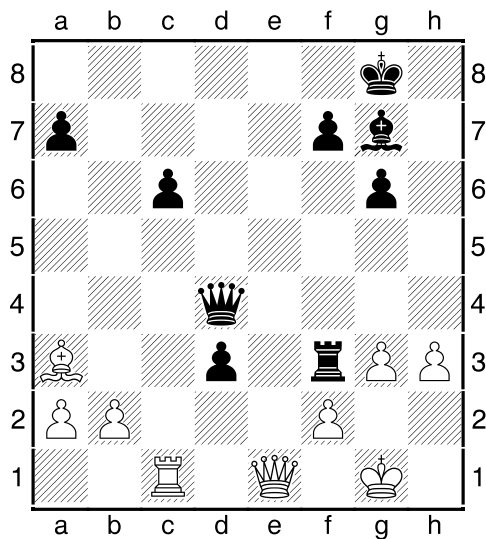
17...e:d5 [Very powerful was the intermediate move 17...b6 with idea to return the knight to d4, and in the case of 18.e:f5 B:d5 19.B:d5 Q:d5 20.Q:d5 e:d5 21.Ba3 g:f5 black has an extra pawn in the end-game] **18.e:f5 d4 19.B:c6 b:c6 20.f:g6 h:g6**



Black still retained some advantage due to strong passed pawn. **21.Qf3 Qa5 22.Ba3 Rad8 23.Rfd1 Rd5 24.Rbc1 Re6 25.Qb3 Rf5 26.Qc4 Qe5**



27.Qd3?! [White should go to the end-game, even after 27.Bc5 Qe2 28.Q:e2 R:e2 29.f4 R:b2 30.a4 Rd5 31.B:a7 Rd7 32.Bc5 Ra2 33.Rc4 Rb7 34.Kf1 Rb3 35.B:d4 B:d4 36.Rc:d4 Rf3+ 37.Ke1 R:g3 active black pieces give some chance of winning] **27...Qf6 28.Rf1 Rf3 29.Qd1 d3** White pieces shackled protection of the king, and the black pawn briskly rushes forward, while creating a threat of rook invasion. **30.Re1 R:e1+ 31.Q:e1 Qd4**



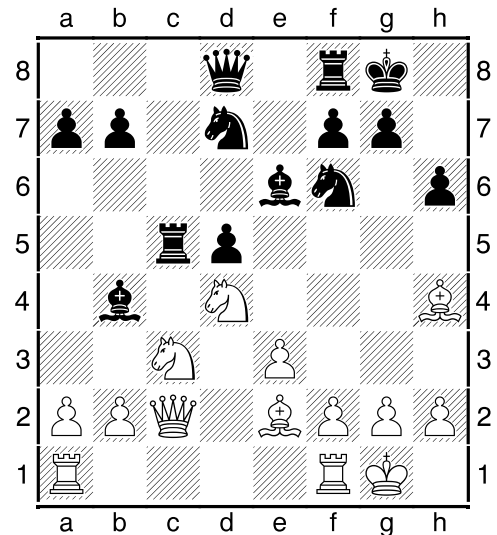
Original double blow. **32.Bb4 R:g3+ 33.Kh2 Rg5 34.Qe3 Be5+ 35.Kh1 Qd5+ 36.f3 Qe6 0-1**

(02) Matlakov, Maxim (2682) - Eljanov, Pavel (2729) [E35]

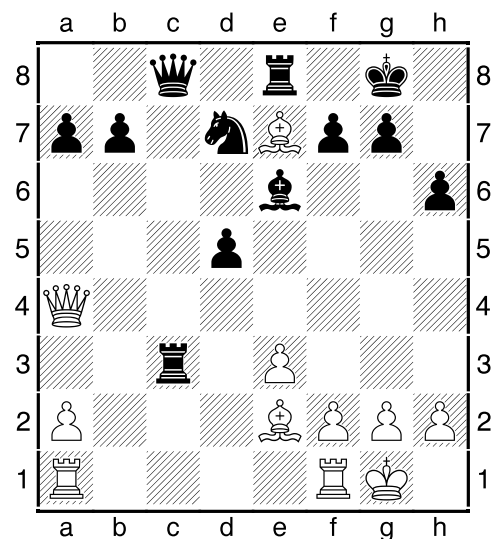
M.Chigorin Memorial 2013 St. Petersburg (7), 11.10.2013

[IM Sitnikov, A]

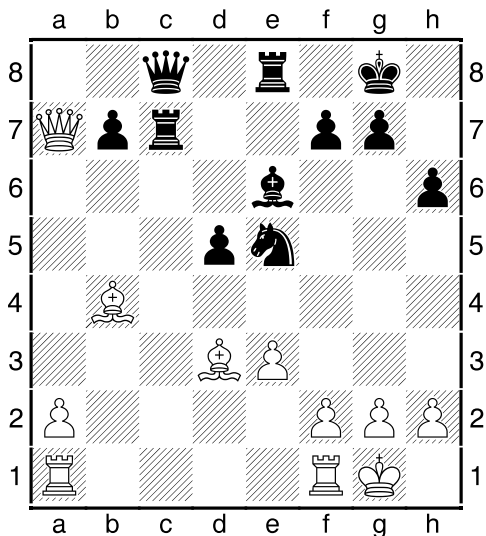
1.d4 Nf6 2.c4 e6 3.Nc3 Bb4 4.Qc2 d5 5.c:d5 e:d5 6.Bg5 c5 7.d:c5 h6 8.Bh4 0-0 9.e3 Be6 10.Nf3 Nbd7 11.Be2 Rc8 12.0-0 R:c5 13.Nd4



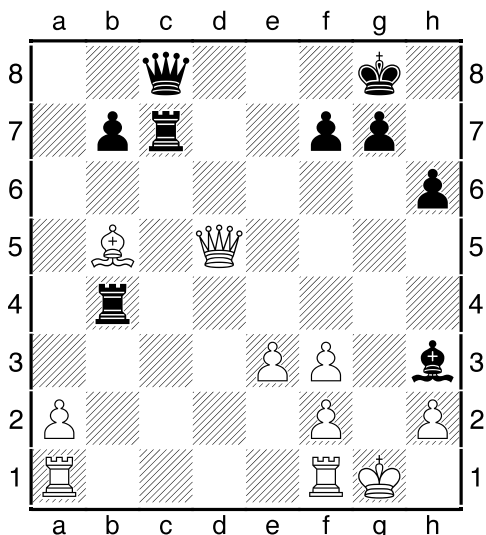
13...Qc8!N That's right – away from a bunch and attacking the knight. **14.Ndb5** A vain attempt to avoid the loss of a pawn. Her death is imminent. Timely preventive measures by f2–f3 could limit the extent of black cavalry, and the white knight on the outpost d4 retained all the advantages of his position... **14...B:c3 15.N:c3 Ne4 16.Be7 N:c3 17.b:c3 R:c3 18.Qa4 Re8**



It is easy to see that a pawn don't play a crucial role. Black's forces are ready for coordinated action, and the opponent has nowhere to go with his two bishops. **19.Bb4 Rc2! 20.Bd3 Rc7 21.Q:a7 Ne5**



22.Bb5? White does not realize the danger of his position. Otherwise, he would prefer **22. Rfd1** and patient defense... **22...Bh3! 23.Qd4** [Not better **23.Be2 Rc2 24.Bd1 Rc6 25.Re1 B:g2 26.K:g2 Rg6+ 27.Kf1 Qh3+ 28.Ke2 Qg4+ 29.Kf1 Qg2+ 30.Ke2 Rf6** with the defeat] **23...Nf3+ 24.g:f3 Re4 25.Q:d5 R:b4**



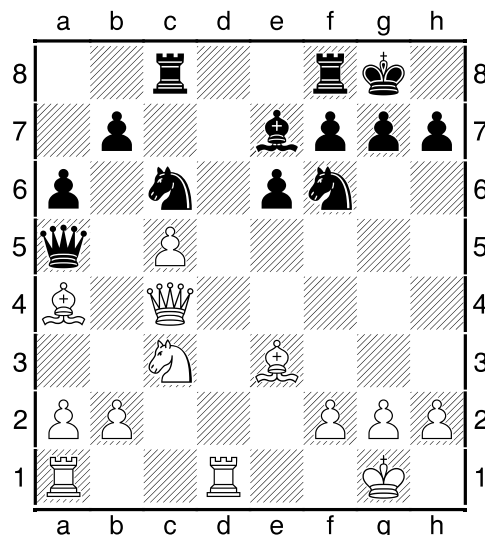
One by one the white pieces fall under the blows. No protection. **26.Rfd1 R:b5 27.Q:b5 Rc5 28.Rd8+ Q:d8 29.Q:c5 Qf6 0-1**

(03) Akopian, Vladimir (2684) - Bernadskiy, Vitaliy (2527) [B12]

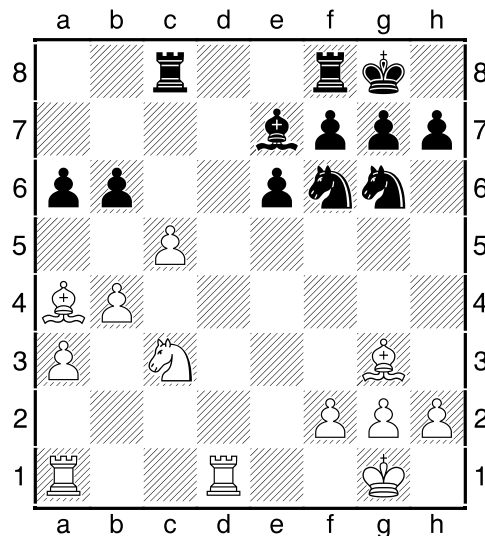
M.Chigorin Memorial 2013 St. Petersburg (7), 11.10.2013

[IM Sitnikov, A]

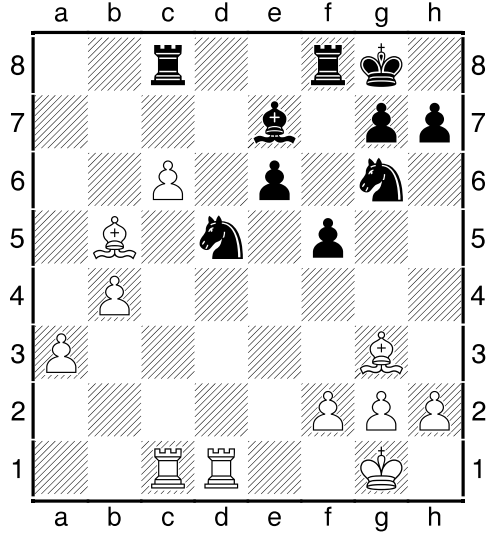
1.e4 c6 2.d4 d5 3.e5 c5 4.d:c5 Nc6 5.Nf3 Bg4 6.c3 e6 7.Be3 B:f3 8.Q:f3 N:e5 9.Bb5+ Nc6 10.0-0 Nf6 11.c4 a6 12.Ba4 Rc8 13.Rd1 Qa5 14.Nc3 d:c4 15.Qf4 Be7 16.Q:c4 0-0



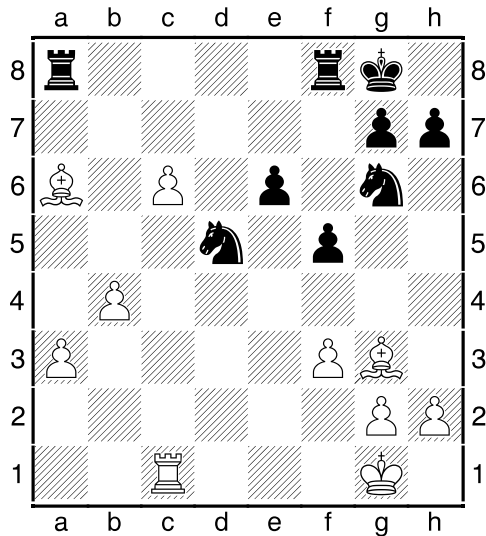
17.a3N [In previously played white chose without loss of time to move a pawn **17.B:c6 R:c6 18.b4** - but not everyone wants to give up so quickly with the bishop] **17...Ne5 18.Qf4 Ng6 19.Qf3 Qc7 20.b4 Nh4 21.Qf4 Q:f4 22.B:f4 Ng6 23.Bg3?!** [Correct trim **23.Bd2 Ne5 24.Bb3** and white can hope for the future] **23...b6**



24.c6?! White doesn't want to part with a pawn, but pays too high price... [It was possible to keep equality through passed pawn: 24.Rab1 b:c5 25.b5 a:b5 26.B:b5] **24...b5 25.N:b5 a:b5 26.B:b5 Nd5 27.Rac1 f5!**



That's so unexpected at the white pieces staggered ground underfoot. **28.f3 Bg5 29.Ba6 B:c1 30.R:c1 Ra8**



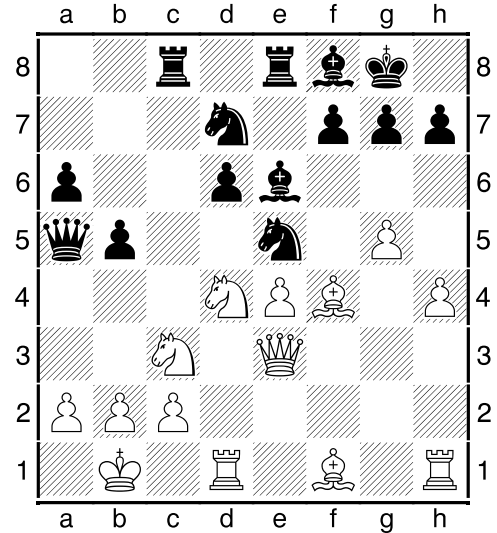
31.Bb7 [Had a chance to prolong resistance after 31.b5 f4 32.Bf2 Nc7 33.Bb7 N:b5 34.B:a8 R:a8 35.c7 Rc8 36.Bb6 Ne7 37.a4 Nd6 38.a5 Kf7 39.a6 Nd5 40.Bd4 Nb5 41.Be5 Ke7 42.Rc5 Nb:c7 43.a7 Kd7 and on the way to victory black must overcome some technical difficulties] **31...R:a3 32.c7 N:c7 33.B:c7 Ra7 0-1**

(04) Zhigalko,Andrey (2615) - Areshchenko,Alexander (2714) [B90]
M.Chigorin Memorial 2013 St. Petersburg

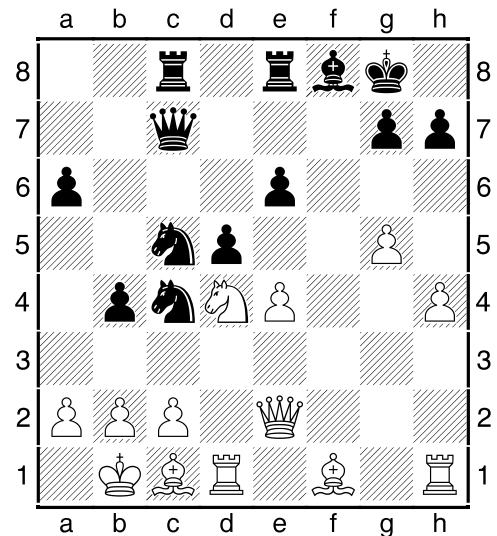
(8), 12.10.2013

[IM Sitnikov, A]

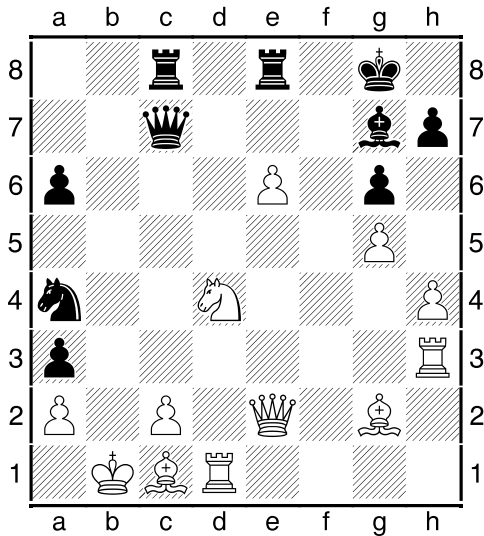
1.e4 c5 2.Nf3 d6 3.d4 c:d4 4.N:d4 Nf6 5.Nc3 a6 6.Be3 e5 7.Nb3 Be6 8.h3 Be7 9.f4 e:f4 10.B:f4 Nc6 11.Qe2 Nd7 12.0-0 Nce5 13.Kb1 0-0 14.Nd4 Previously preferred 14. g4 , but the move in the game is quite logical... **14...Rc8 15.Qe3 Re8 16.g4** The matter is reduced to rearrangement of moves... **16...Bf8 17.g5 b5 18.h4 Qa5**



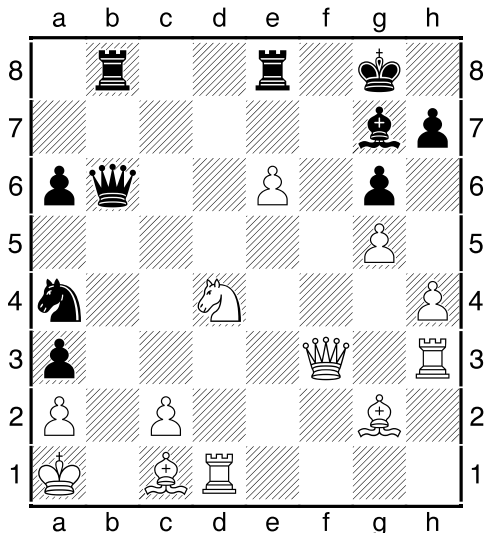
19.Qe1 b4 20.N:e6 f:e6 21.Ne2 Qc7 [In case of surprise attack 21...R:c2 white can not accept a sacrifice, in order not to expose the king big dangers, but simply press the rival at another side of the board: **22.Nd4 Rc7 23.h5** with mutual chances] **22.Nd4 Nc4 23.Bc1 d5 24.Qe2 Nc5**



25.Bg2?! The idea to punch an opponent on the light squares – good, but here we see it incorrectly prepared. [Promised a solid advantage 25.e:d5 e:d5 26.Qf3 Ne4 27.Bh3 Rb8 28.Rhf1 Kh8 29.Be6 Bc5 30.B:d5 B:d4 31.R:d4 Nc3+ 32.Ka1 N:d5 33.R:d5 further movement of pawns on the kingside] **25...Na4?!** Wiser was taking the e4 for the neutralization of white bishop, but black intends to sharpen the situation. **26.e:d5 g6 27.Rh3 Bg7** Almost all the black pieces took strike positions. Will it be enough for an effective assault? **28.d:e6 Na3+ 29.b:a3 b:a3**



30.Qf3? [A certain amount of composure here would be very handy, because after proper 30.Nb3 Nc3+ 31.R:c3 Q:c3 32.Rd3 black queen turns to flight, and the whole ship of attacking dream runs into rough rocks of reality] **30...Rb8+ 31.Ka1 Qb6?**



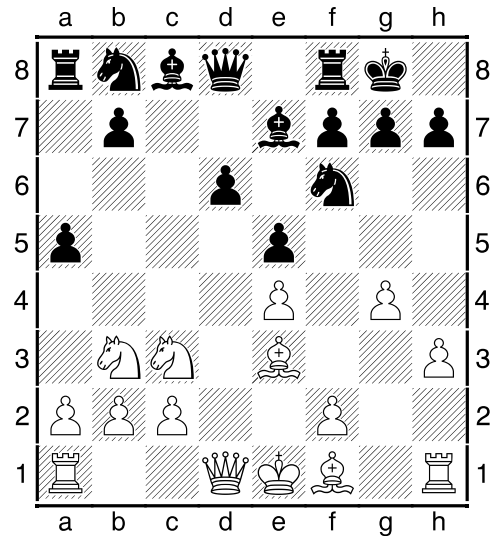
[Black rook sleeps around and misses the chance to bring glory to his army: 31...Rf8 32.Qc6 B:d4+ 33.R:d4 Rf1! 34.B:f1 Q:c6 35.B:a3 Nc3 36.Rb4 R:b4 37.B:b4 Nd5 38.Rb3 N:b4 39.R:b4 Qc3+ 40.Rb2 a5 with a chance of winning, because white king-side pawns are unlikely to survive long] **32.B:a3??** Tragicomedy of blunders. [It looks like white humbled themselves with the role of defensive side and forgot how pieces to run forward: 32.Qf7+ Kh8 33.Rb3 B:d4+ 34.c3! B:c3+ 35.Kb1 Qc5 36.Rd7 and even the exchange of queens will not save black from defeat] **32...B:d4+ 33.R:d4 Qb1# 0-1**

(05) Zhigalko,Andrey (2615) - Papai-oannou,Ioannis (2633) [B90]

ECCC 2013 (2), 21.10.2013

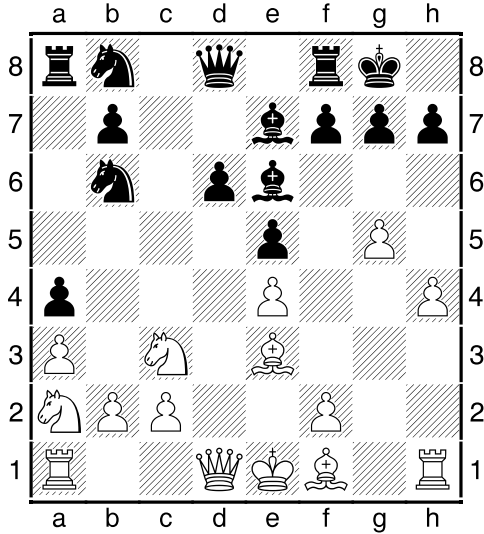
[IM Sitnikov, A]

1.e4 c5 2.Nf3 d6 3.d4 c:d4 4.N:d4 Nf6 5.Nc3 a6 6.Be3 e5 7.Nb3 Be7 8.h3 0-0 9.g4 a5N

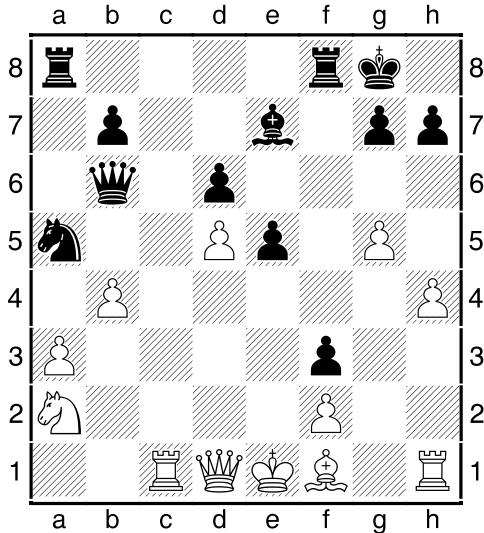


Black operates on the principle of preemptive strike, building activity on the flank, where the opponent is going to castle. [Delay may result in a very difficult position, for example 9...Be6 10.g5 Nfd7 11.Qd2 Nc6 12.0-0-0 a5 13.Kb1 a4 14.Nc1 a3 15.b3 Nd4 16.h4 Re8 17.N1e2 d5 18.N:d5 B:d5 19.e:d5 Nf5 20.Ng3 N:e3 21.f:e3 Bf8 22.Bb5 e4 23.Rhf1 g6 24.Qf2 Qe7 25.Rd4 and black it's time to resign / Bruzon Batista, L (2717) – Ricardi, P

(2505) / American Continental 2012] **10.a4 a4 11.Nc1 Be6 12.g5 Nfd7 13.h4 Nb6 14.N1a2**

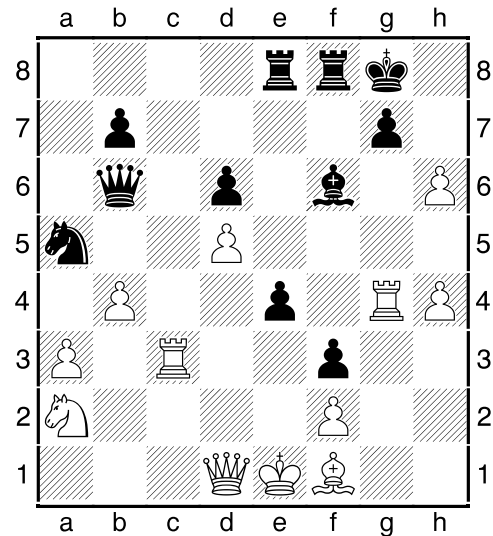


14...Nc6 [Pending further test the idea of the pawn sacrifice after 14...d5 15.B:b6 Q:b6 16.e:d5 Bd7 an initiative for black] **15.Nd5 B:d5 16.e:d5 Na5 17.b3 a:b3 18.c:b3 f5** Black knight in trouble, so the army holds all the hope on the attack. **19.Rc1 f4 20.B:b6 Q:b6 21.b4 f3**

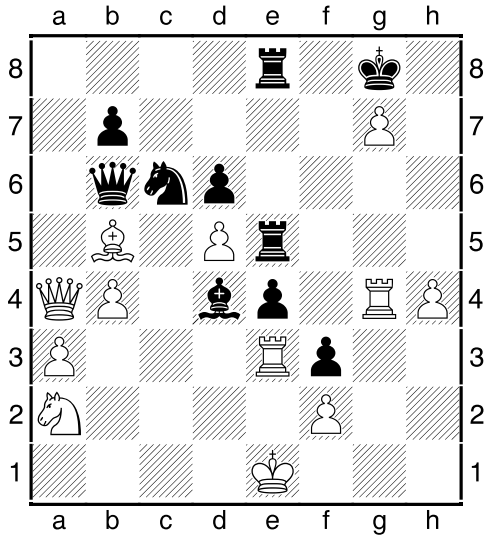


22.Rh3 [Black's threats are sufficiently efficacious, such as 22.b:a5 Q:a5+ 23.Rc3 Rf4 24.Qb3 Bd8! 25.Q:b7 Bb6 26.Bh3 Bd4 27.Be6+ Kh8 28.Q:a8+ Q:a8 29.Rc8+ Q:c8 30.B:c8 Re4+ 31.Kd1 Re2 32.Nc1 R:f2 33.Bf5 Bc3 34.Nb3 g6 35.Bd3 Rb2 36.Bc2

e4 37.Rf1 Kg7 38.a4 Be5 39.Nd2 e3 40.N:f3 e2+ 41.K:e2 R:c2+ 42.Kd3 Rc3+ 43.Kd2 Ra3 44.N:e5 d:e5 45.Re1 R:a4 46.R:e5 R:h4 47.Kc3 Ra4 48.d6 Kf8 49.Re6 Kf7 50.Re7+ Kf8 51.R:h7 Ke8 52.Re7+ Kd8 53.Re6 Kd7 54.R:g6 Ra6 55.Rg7+ Ke6 56.d7 Rd6 with a draw] **22...e4 23.Rg3?!** Safer was to strengthen the defence line by 23. Rc3 , but the white underestimates the obvious threat e4-e3 and black doesn't bring it to pass over several moves... **23...Rac8?! 24.Rg4?! Rce8?! 25.Rc3 h5** A desperate attempt to revive the bishop. **26.g:h6 Bf6**



27.Re3? Black still going to break through the point e3, and the main combat unit is the queen. It would be nice to distract him from the original plan... [This goal was responsible simple taking piece: 27.b:a5 B:c3+ 28.N:c3 Qc5 29.Na4! Q:a5+ 30.Qd2 Ra8 31.Q:a5 R:a5 32.R:g7+ Kh8 33.Nc3 R:a3 34.Kd2 e3+ 35.f:e3 f2 36.Ne4 Ra2+ 37.Kd3 Ra3+ 38.Kc2 Ra1 39.Bh3 f1Q 40.B:f1 Ra:f1 41.N:d6 R8f6 42.Rd7 b5 43.Kd3 b4 44.Kc4 Rh1 45.K:b4 R:h4+ 46.e4 Kg8 47.Kc5 Rh:h6 48.e5 Rf1 49.e6 Rc1+ 50.Kb6 Re1 51.e7 R:e7 52.R:e7 R:d6+ 53.Kc5 and white pawn makes a triumphant march] **27...Bd4 28.h:g7 Rf5 29.Qa4 Rfe5 30.Bb5 Nc6**



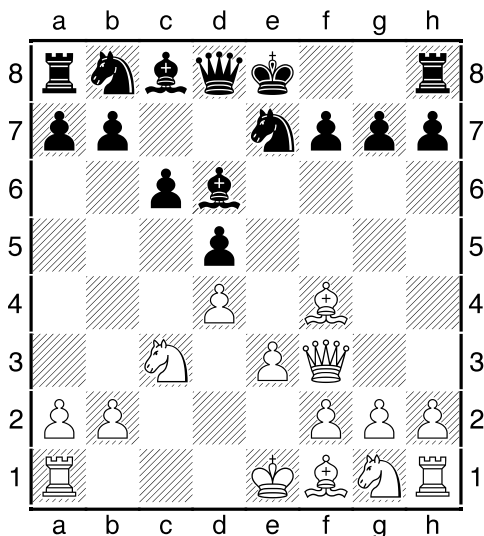
White had not time to take the knight comfortably, and now forced to lose centre. The rook turns out bad blocker, and fortress quickly disintegrates. **31.d:c6 B:e3 32.Qb3+ d5 33.f:e3** [After a possible 33.Q:e3 Q:b5 34.c:b7 d4 35.Qb3+ Rd5 36.Nc1 Q:b7 37.Rg5 Red8 38.Qc4 Qf7 the case of white is bad] **33...Q:b5 0-1**

(06) Vitiugov, Nikita (2729) - Halkias, Stelios (2568) [D31]

ECCC 2013 (3), 22.10.2013

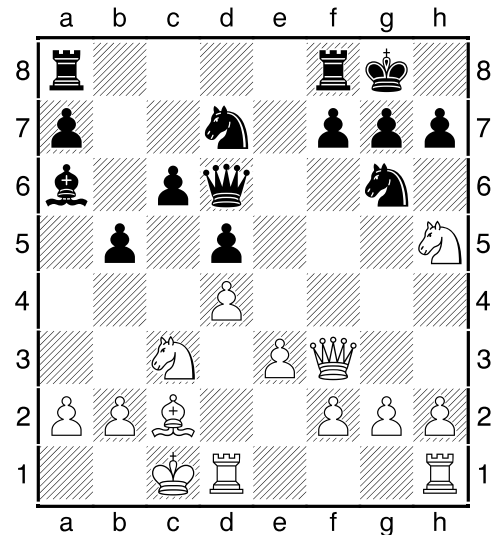
[IM Sitnikov, A]

1.c4 e6 2.Nc3 d5 3.d4 Be7 4.c:d5 e:d5 5.Bf4 c6 6.e3 Bd6 7.Qf3 Ne7

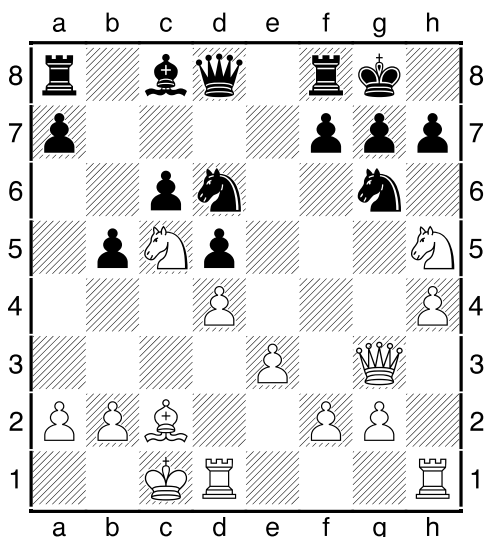


8.B:d6N White naturally wants to obstruct the opponent development of the second

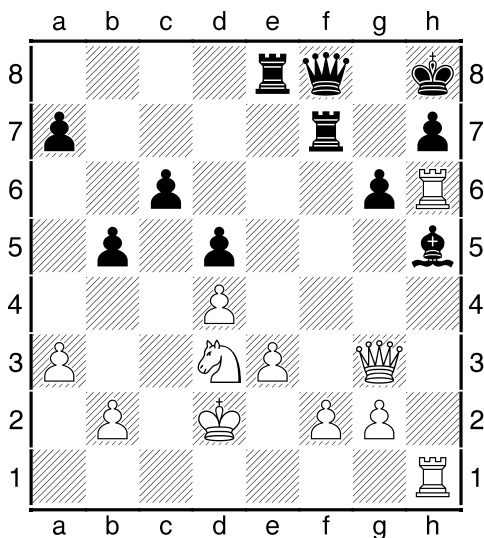
bishop... [In a previously played game 8.Bd3 0-0 9.Nge2 Bf5 10.B:f5 N:f5 11.g4 Nh4 12.Qg3 Be7! 13.0-0-0 g5 14.B:b8 R:b8 black successfully solved the opening problems and have sufficient counterplay against the enemy king / Mamedyarov, S (2731) – Halkias, S (2584) / Bundesliga 2008] **8...Q:d6 9.Bd3 b6** Offer exchange bishops by g6 and Bf5 – then white could hardly avoid it. **10.Nge2 Ba6 11.Bc2 Nd7 12.0-0-0 0-0** Avoiding the exchange of bishops, white showed his aggressive intentions, and now for black safer looked long castling – closer to the bulk of his pieces. [Trying to eat pawns after 12...0-0-0!? 13.Q:f7 Rdf8 14.Q:g7 Rhg8 15.Q:h7 Rh8 led to a draw] **13.Nf4 Ng6 14.Nh5 b5**



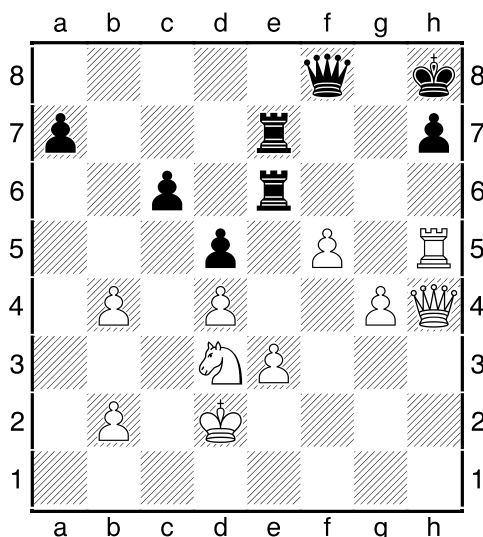
Spend the undermining of the center is not possible, and in search of initiatives black uses the "side" methods. However, now boldly marked defects position – limited bishop, weakness pawn "c" and complex of black margins. White immediately allowed his knight for the trophies. **15.Ne2! Nb6 16.Qg3 Nc4 17.Nef4 Qb4 18.Nd3 Qa5 19.Bb3 Qd8** Threats of black nipped in the bud. Queen dancing the twists and returns home empty-handed. **20.h4 Nd6 21.Nc5 Bc8 22.Bc2**



Now it is obvious that white will smash the enemy fortress with knight sacrifice...
22...Nf5 23.B:f5 B:f5 24.N:g7! K:g7 25.h5 Qf6 26.Rh2 Kh8 27.h:g6 f:g6 28.Rdh1 Rf7 29.Rh6 Rg8 30.Kd2 Re8 31.Qh2 Qe7 32.a3 Bg4 33.Qg3 Bh5 34.Nd3 Qf8



35.R1:h5 g:h5 36.R:h5 Black almost equalized position, but to play here without clear goals difficult, as the white camp has no weaknesses. Protection simplified when exchange a pair of rooks, however, this goal is unattainable. Further course of events shows: white possesses undoubted initiative thanks to the outposts and mobile structure... **36...Re6 37.Qh4 b4 38.a:b4 Ref6 39.f4 Re6 40.g4 Rfe7 41.f5**



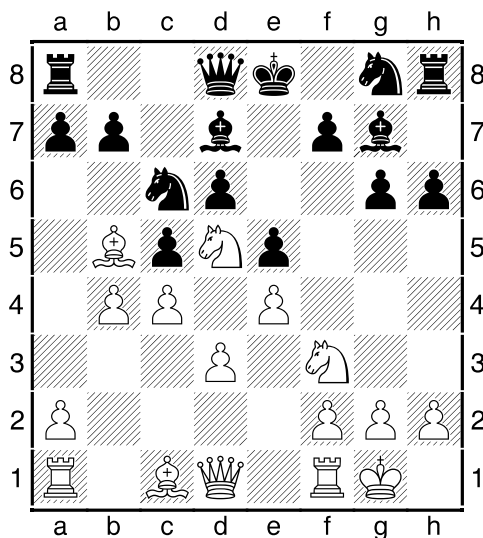
41...Re4 [41...R:e3 42.Nf4 Qe8 43.Ng6+ Kg8 44.Ne5 R3:e5 45.d:e5 brings black little joy] **42.Ne5 R4:e5 43.d:e5 Rg7 44.Ke2 Q:b4 45.Qd8+ Rg8 46.Qf6+ Rg7 47.Rg5 Qe7 48.Q:g7+ Q:g7 49.R:g7 K:g7 50.b4 1-0**

(07) Bartel, Mateusz (2638) - Sjogirov, Sanan (2635) [B52]

ECCC 2013 (3), 22.10.2013

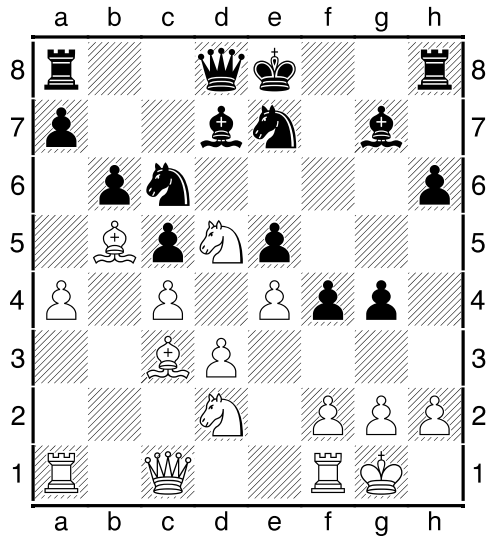
[IM Sitnikov, A]

1.e4 c5 2.Nf3 d6 3.Bb5+ Bd7 4.c4 Nc6 5.Nc3 e5 6.d3 Very competent scheme in the positional relation. Giving freedom to the bishop, white makes pawn redoubts on the fields of same color ... **6...g6 7.Nd5 Bg7 8.0-0 h6 9.b4N**

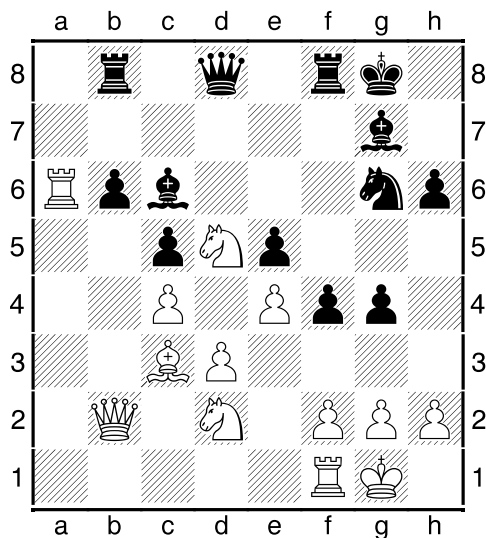


The quickest way to seize the initiative –

in the spirit of the Volga and other gambits. Few dare to accept the gift, because the pressing on the open lines may be very powerful... **9...Nge7 10.b:c5 d:c5 11.Be3** The landscape is delineated an important nuance: to a possible jump Nd4 white can reply by simple taking, while a similar exchange on d5 leads to the formation of a strong passed pawn... **11...b6 12.Qc1** Now black cannot castle. Only way to move pawns... **12...f5 13.a4 f4 14.Bd2 g5 15.Bc3 g4 16.Nd2**

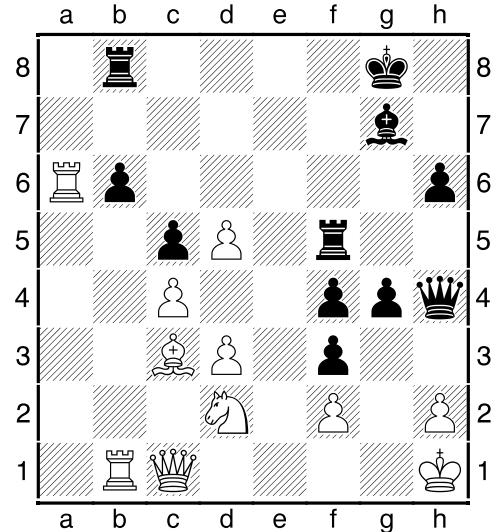


Pawn mass on the kingside looks impressive, but white manages to break quickly on the opposite side of the board... **16...0-0 17.a5 Rb8 18.a:b6 a:b6 19.Qb2 Ng6 20.B:c6 B:c6 21.Ra6**



21...B:d5?! [Black cannot be avoided, but only postpone death by **21...f3 22.g3 Rf7 23.Rfa1 Rfb7 24.Nf1! Qd7 25.Nfe3 b5 26.Qc1 b:c4 27.d:c4 h5 28.Nf5 Qe6**

29.Be1! Kf7 30.Qg5 and queen sweeps the board one by one black pawn] **22.e:d5 f3 23.g3 Qg5 24.Rb1** Rook goes to the operating room, and to its place the queen may come in time to protect... **24...Nf4 25.g:f4 Qh4 26.Qc1 Rf5 27.Kh1 e:f4**

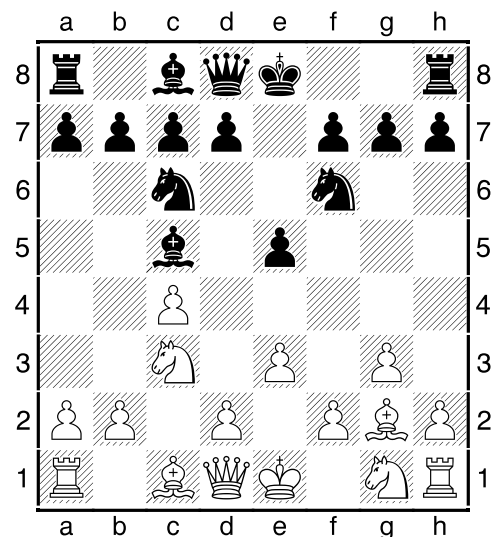


28.B:g7 More precisely **28. Ra7** – not giving black time for attack... **28...g3** [In case of more acute **28...Q:f2 29.Qg1 Q:d2 30.Q:g4 Qg2+ 31.Q:g2 f:g2+ 32.K:g2 K:g7 33.Rb:b6** white easily win the endgame] **29.N:f3 Qg4 30.Qd1 Re8 31.Be5 g:f2 32.Ra:b6 Rh5 33.Re6 1-0**

(08) Morozevich, Alexander (2734) - Laznicka, Viktor (2666) [A25]
ECCC 2013 (4), 23.10.2013

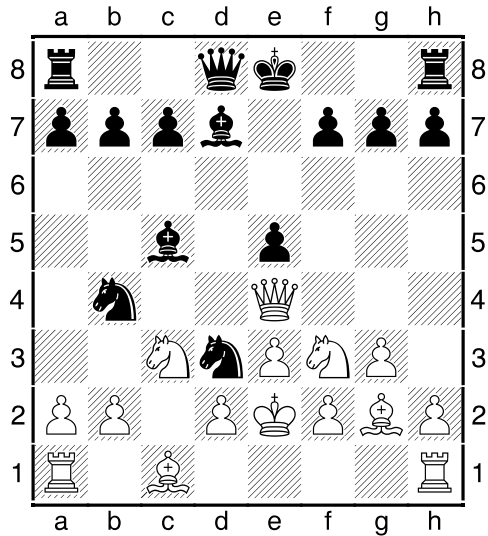
[IM Sitnikov, A]

1.g3 e5 2.c4 Nf6 3.Bg2 Nc6 4.Nc3 Bc5 5.e3

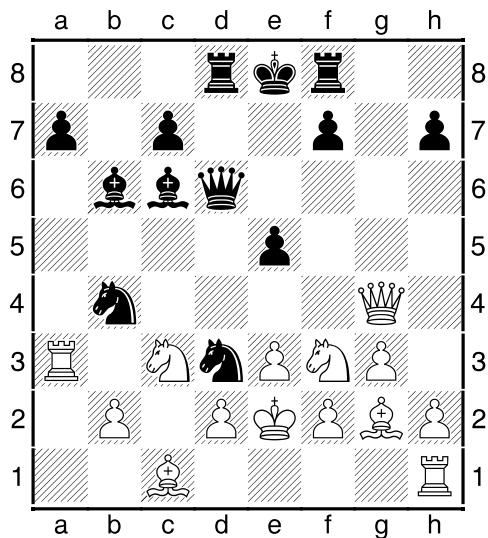


White wants to develop pieces comforta-

bly and build a strong center, so black not hesitates... 5...d5! 6.c:d5 Nb4 7.Nf3 Nd3+ 8.Ke2 N:d5 9.Qa4+ Bd7 10.Qe4 N5b4

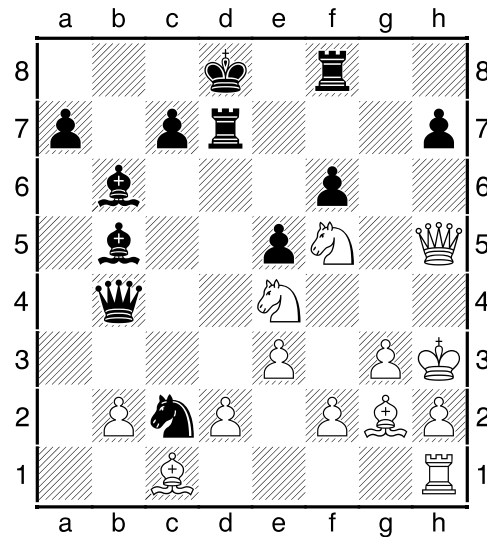


11.a3N [White hasn't cloudless life, which is well illustrated by 11.N:e5 f5 12.Qc4 N:e5 13.Q:c5 Nbd3 14.Qd4 f4! 15.e:f4 Bg4+ 16.Ke3 Q:d4+ 17.K:d4 0-0-0+ 18.Nd5 Nf3+ 19.K:d3 R:d5+ 20.Kc3 Rhd8 21.d4 R:d4 22.Be3?! Rd3+ 23.Kb4 a5+ 24.Ka4 R8d4+ 25.B:d4 Bd7+ 26.K:a5 R:d4 and the King die in mating trap] 11...Bc6 12.Qc4 b5 13.Qg4 Nc2 14.Q:g7 Rf8 15.Ra2 b4 16.a:b4 Nc:b4 17.Ra5 Qd6 18.Qg4 Bb6 19.Ra3 Rd8

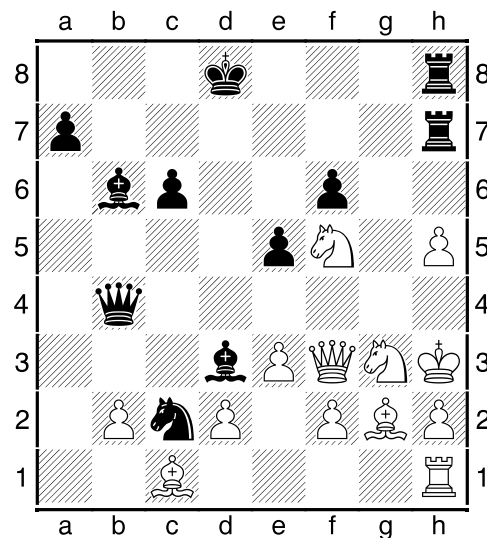


Black king feels quite comfortable with epaulettes as two rooks. White has also clearly traced the problem to the development and coordination of forces. Extra pawn doesn't play a special role – not to move it from a king? However, Alexander Morozevich has own view on some

things... 20.Ne4 Qe7 21.Qf5 f6 22.Nh4 Bb5 23.Kf3 Nc2 24.R:d3 R:d3 25.Qh5+ Kd8 26.Nf5 Qb4 [More accurate was 26...Qe6 – that, for example, to a careless 27.Kg4 Be8! 28.Qh6 Q:f5+ 29.K:f5 Bd7# capture the enemy monarch] 27.Kg4! Rd7 28.Kh3!

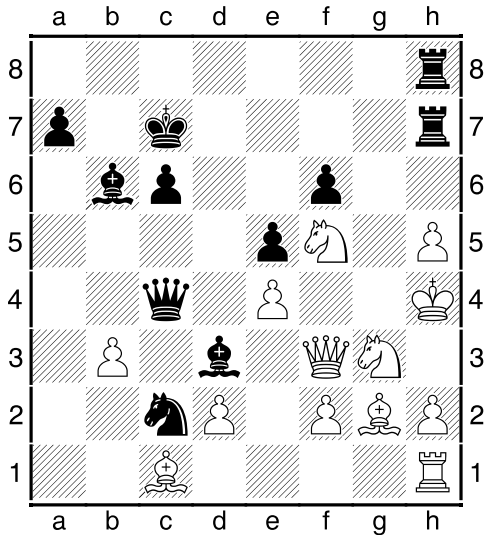


After a successful evacuation the position is not so clear. In addition to objective factors, psychological note: the scene of the king, strolling away with the board, can have profound effects on the nervous system of the leader of the black army... 28...Bd3 29.Qf3 c6 30.g4 h5 31.g:h5 Rh7 Black must seek approaches to the enemy. Otherwise, the white pawn can become a powerful force. 32.Neg3 Rfh8

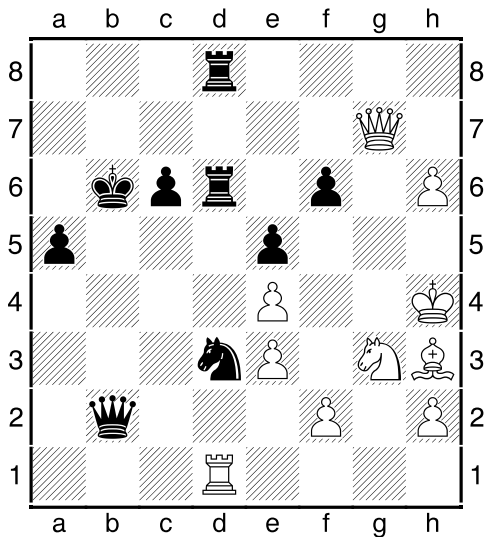


33.e4?! Good idea with inaccurate performance. It is better first to wrap up the king with a warm blanket 33. Nh4, while also creating the threat of taking on c6 and f6,

and then disturb the black bishop by e3-e4. Predict the outcome of the battle would be difficult... **33...Qc4 34.Kh4? Kc7?! In the ecstasy of battle black passes elementary win. [34...R:h5+ 35.N:h5 Be2 36.d3 B:f3 37.d:c4 B:f2+ with checkmate] 35.b3**

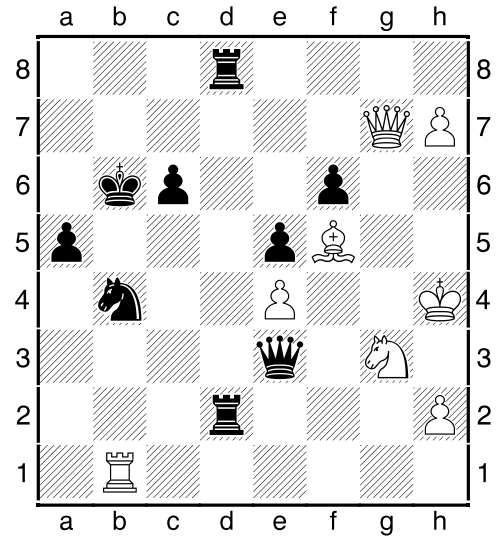


35...Q:b3?! [Once again, strong same idea: 35...Qf7 36.Q:d3 R:h5+ 37.Kg4 R:f5! 38.e:f5 Qg8+ 39.Kf3 Nd4+ and white has to give the queen] 36.Bb2 Q:b2 37.Q:d3 Rd7 38.Qf3 Nb4?! This can finish badly. Nobody bothered to capture one of pawns on the previous or current move. 39.Ne3 B:e3 40.d:e3 Nd3 41.Rd1 a5 42.Bh3 Rd6 43.Qg4 Rhd8 44.Qg7+ Kb6 45.h6

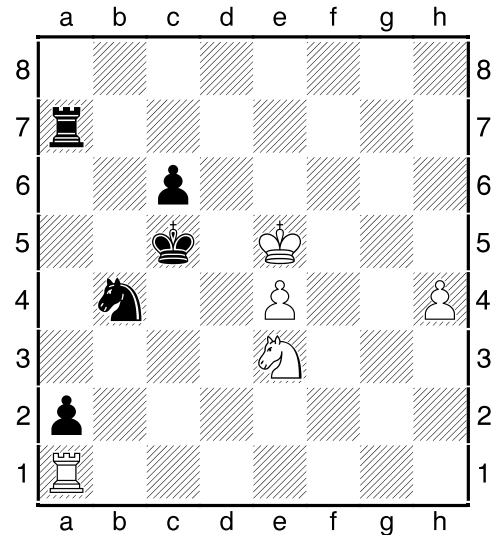


And now to wrestle how to stop this

passed pawn... **45...Q:f2 46.Rb1+ Nb4 47.h7 Q:e3 48.Bf5 Rd2**



49.Rh1?! Still, white mistaken the latest... [Black would have to make a draw after correctly 49.Kh3 Rh8 50.Q:h8 Qh6+ 51.Kg4 Qf4+ 52.Kh3=] 49...Qg5+ 50.Q:g5 f:g5+ 51.K:g5 a4 Black pawn says the final word in this game. 52.Kf6 a3 53.Be6 R2d6! 54.Nf5 R:e6+ 55.K:e6 Rh8 56.K:e5 a2 57.Ra1 R:h7 58.h4 Ra7 59.Ne3 Kc5



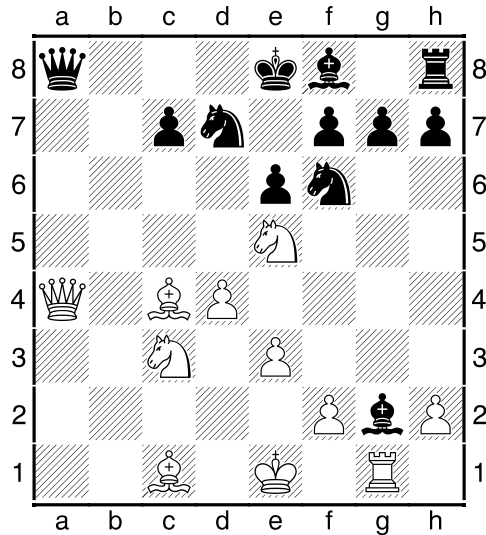
60.Rc1+ Kb5 61.Ra1 Ra3 62.Nf5 Kc4 63.h5 Nc2 64.R:a2 R:a2 65.h6 Ra7 66.Kf6 Nd4 67.Ne7 Ra1 68.h7 Rh1 69.Kg7 Ne6+ 70.Kg8 Rg1+ 71.Kf7 Ng5+ 72.Kg6 N:h7+ 73.K:h7 c5 74.Nf5 Re1 0-1

(09) Gunina,Valentina (2506) - Gaponenko,Inna (2400) [D22]

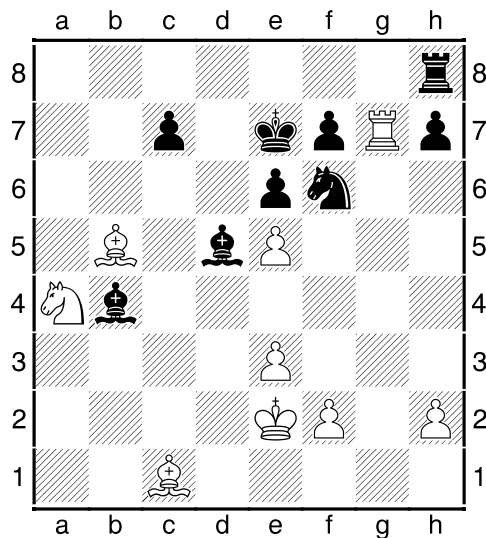
ECCCW 2013 (3), 22.10.2013

[IM Sitnikov, A]

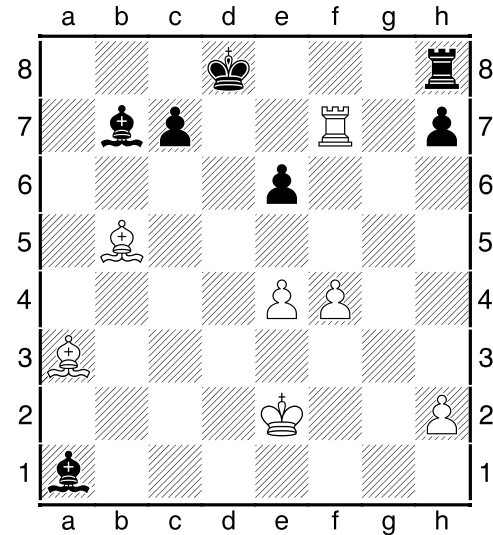
1.d4 d5 2.c4 d:c4 3.Nf3 a6 4.e3 b5 5.a4 Bb7 6.a:b5 a:b5 7.R:a8 B:a8 8.b3 e6 9.b:c4 b:c4 10.Ne5 Nd7 11.Qa4 Ngf6 12.B:c4 B:g2 13.Rg1 Qa8 14.Nc3N



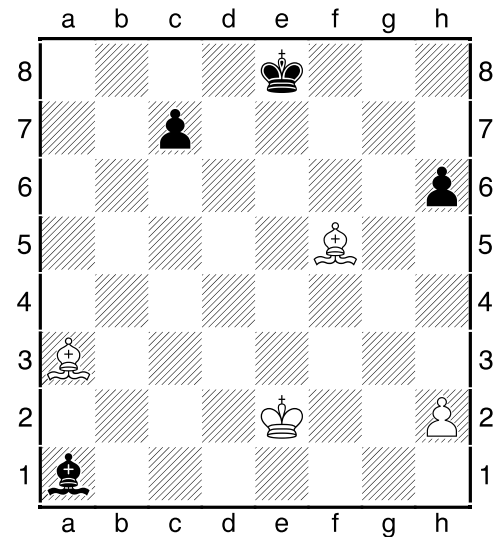
Previously played 14. Bb5 – but noticeable it didn't bring fruit. Move in the game, even if it seems more logical, is not free from drawbacks. As we see later, the white knight can be struck... 14...Q:a4 15.N:a4 Bb5 16.Bb5 Bb4+ 17.Ke2 Ke7 [After a quiet 17...g6 18.f3 Ke7 19.e4 Ba8 20.Nc6+ B:c6 21.B:c6 Nb6 white can only hope for equality] 18.R:g7 N:e5 19.d:e5



19...Ne4 [An important intermediate move 19...Rb8 20.Bd3 Nd7 21.Bb2 Bc6! 22.Nc3 N:e5 solved all problems] 20.f3 Nc3+ This is a serious mistake. [Once again, should apply a counter attack: 20...c6 21.f:e4 Bb3! 22.B:c6 Rc8 23.Bd2 B:d2 24.K:d2 R:c6 25.Nc3 Rc5 26.R:h7 R:e5 and black should get a draw] 21.N:c3 B:c3 22.Ba3+ Kd8 23.e4 Bb7 24.R:f7 B:e5 25.f4 Ba1



26.Bd7 [Also brought victory quickly 26.Ke3 h5 27.Rd7+ Kc8 28.Rd1 Bc3 29.Bd7+ Kb8 30.B:e6 and white pawns unstoppable] 26...B:e4 27.B:e6 Re8 28.f5 B:f5 [28...Be5 29.h4 h6 30.Ke3 Bc6 31.Bf8 h5 32.Bh6 Bd6 33.Bg5+ Be7 34.Kf4 Bb5 35.R:e7! R:e7 36.f6+-] 29.Rd7+ Kc8 30.Re7+ Kd8 31.R:e8+ K:e8 32.B:f5 h6



Despite the limitations of the material,

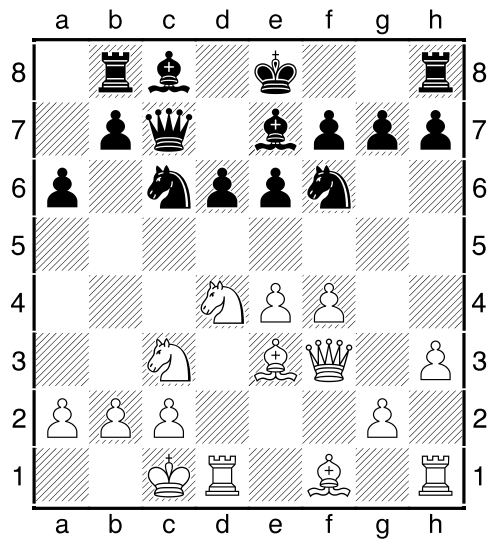
white wins this ending easily. It is important that the black king haven't a time to reach the field g7, where he could protect the pawn. **33.Bg6+ Kd7 34.Bf8 Be5 35.h3 Bf4 36.Kf3 Bd2 37.Bf7 Bc1 38.Kg4 Be3 39.Kh5 c5 40.B:h6 Bf2 41.Bf4 Ke7 42.Kg6 Bh4 43.Bc4 1-0**

(10) Kosteniuk,Alexandra (2495) - Hou,Yifan (2621) [B82]

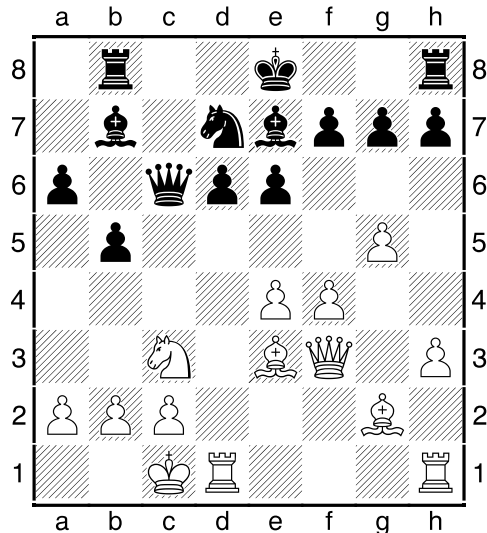
ECCCW 2013 (4), 23.10.2013

[IM Sitnikov, A]

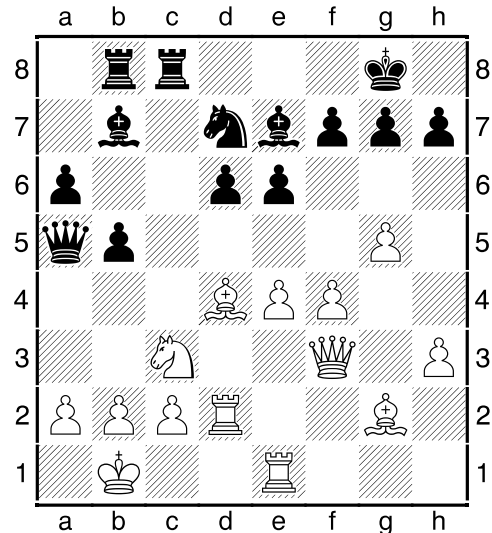
1.e4 c5 2.Nf3 e6 3.d4 c:d4 4.N:d4 Nc6 5.Nc3 d6 6.Be3 Nf6 7.f4 Be7 8.Qf3 Qc7 9.0-0-0 a6 10.h3 Rb8



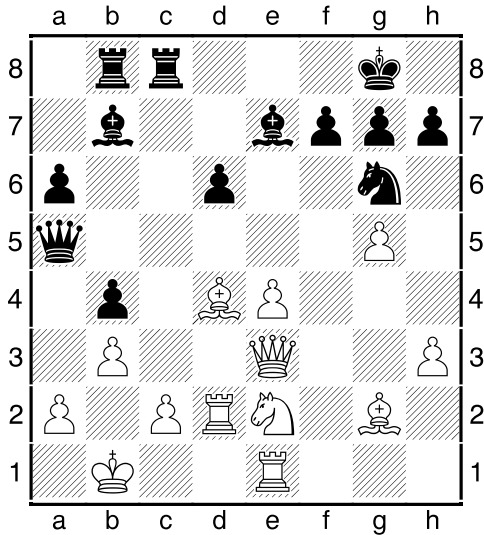
Most popular is an instant castling. Black can begin to storm the enemy monarch, not defining the location of his rook. However, the move in game is also good. **11.g4 b5 12.g5 Nd7 13.N:c6 Q:c6 14.Bg2 Bb7**



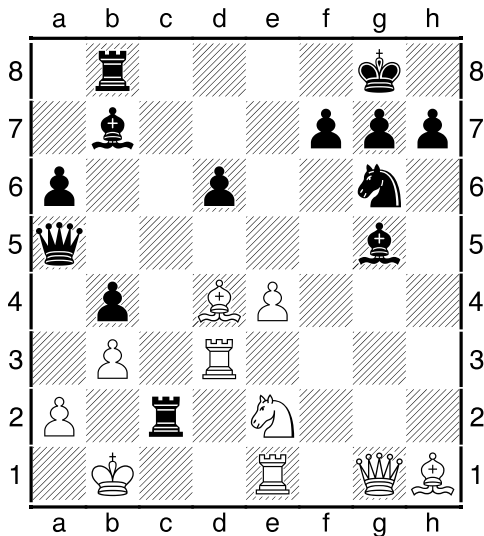
15.Bd4 Black arsenal has the idea of Nc5 with further b5-b4, so white decided to protect the central pawn by rook. However, this leads to loss of time, which is very important when diverse castlings. In addition, the bishop can be struck. Perhaps it was better to transfer the knight to the kingside immediately – to protect the pawn and ready to take part in the attack... **15...0-0 16.Rhe1 Rfc8** The party barely out of the opening stage, and the balance is already noticeably declined in favor of black. The current World Women Champion takes the initiative in her hands, and from that moment a rival occupied only by reflection of threats that occur one after the other, like mushrooms after a rain. **17.Rd2 Qc7 18.Kb1 Qa5**



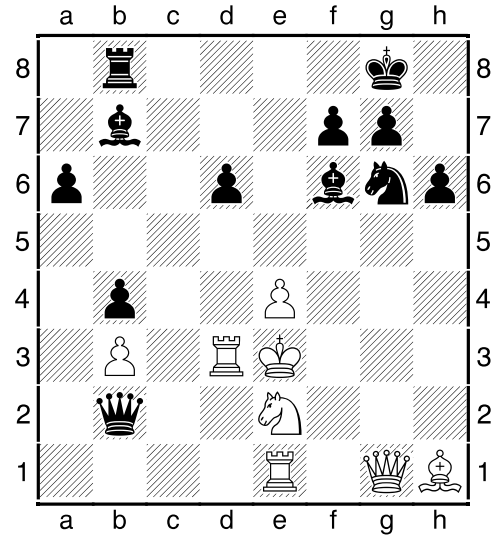
Items a2 and c2 covered, but the rook on danger, after the coming march of black pawn. Once again, it is necessary to defend. **19.Qe3 b4 20.Ne2 e5 21.f:e5 N:e5** Everything is right on schedule. **22.b3 Ng6**



The moment of truth: white pieces feel much more awkward than bare pedestrians in the puddles. Both no attack, no defense for pawn. **23.h4 N:h4 24.Bh1 B:g5 25.Qg1 Ng6 26.Rd3 R:c2!**



The most effective way to target. **27.K:c2 Q:a2+ 28.Bb2 Bf6 29.Kd2 Q:b2+ 30.Ke3 h6!**



Both fresh air through the window, and new reference points for the pieces. Quiet move underscores the hopelessness for white. **31.Red1 Bg5+ 32.Kf2 Nf4 33.Re3 Bc6 34.Rb1 Qf6 35.Ke1 N:e2 36.R:e2 Qc3+ 37.Kf2 Bb5 0-1**

Editorial staff:

- IM Anton Sitnikov (ELO 2497)
- IM Timofey Iljin (ELO 2507)
- IM Anatoliy Polivanov (ELO 2356)
- IM Tarlev Konstantin (ELO 2520)
- IM Sergey Perun (ELO 2345)
- Dmitry Posokhov (ELO 2294)

Chief editor **Roman Viliavin** (ELO 2248)
email: chesszone@ya.ru