

ChessZone Magazine

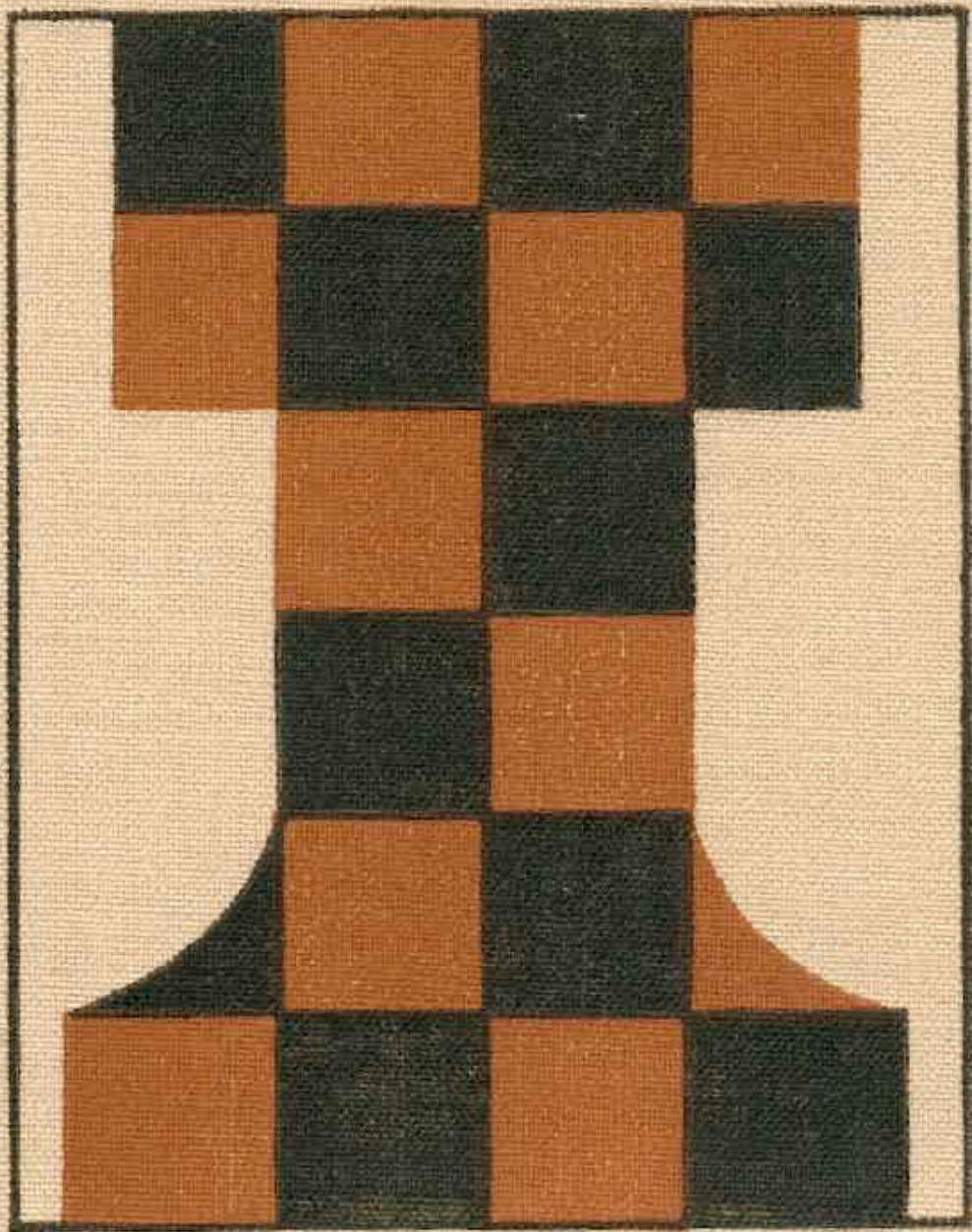


Table of contents: # 08, 2011

Games	4
(01) Fernandez Cardoso,A (2450) - Hernandez Carmenates,Hold (2570) [B87]	4
(02) Holzke,F (2497) - Brkic,A (2598) [D31]	5
(03) Hector,J (2568) - Grandelius,N (2542) [C50]	6
(04) Svidler,P (2739) - Postny,E (2618) [B12]	9
(05) Bachmann,Ax (2550) - Tristan,L (2450) [A89]	10
(06) Yu,Yangyi (2672) - Balogh,Csaba (2643) [D10].....	11
(07) Vachier Lagrave,M (2722) - Pelletier,Y (2590) [C10]	13
(08) Fier,A (2566) - Georgiev,VI (2559) [C78]	14
(09) Kononenko,Dmitry (2593) - Stefansson,Hannes (2546) [B82]	16
(10) Kramnik,Vladimir (2781) - Nakamura,Hikaru (2770) [E97].....	17
Editorial staff:	19

Dear readers!

**ChessZone Magazine is open for your advertising materials.
We have various ad packages at affordable rates!**

**We're also interested in cooperation with advertising agencies,
and could offer great commissions for anyone
who could bring an advertisers to us.**

Please contact us for details

chesszone@ya.ru

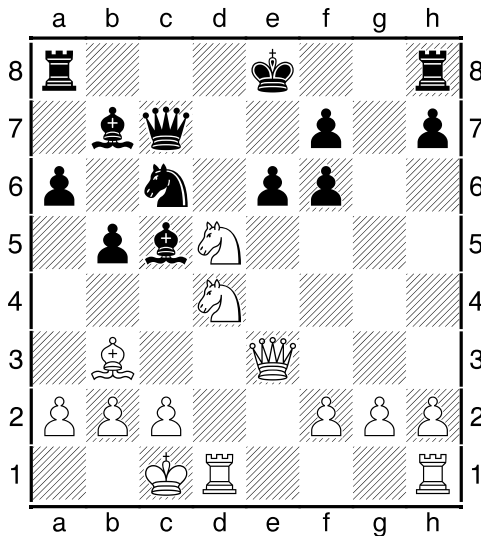
Games

(01) Fernandez Cardoso,A (2450) - Hernandez Carmenates,Hold (2570) [B87]

16th Balaguer Open Balaguer ESP (4), 20.07.2011

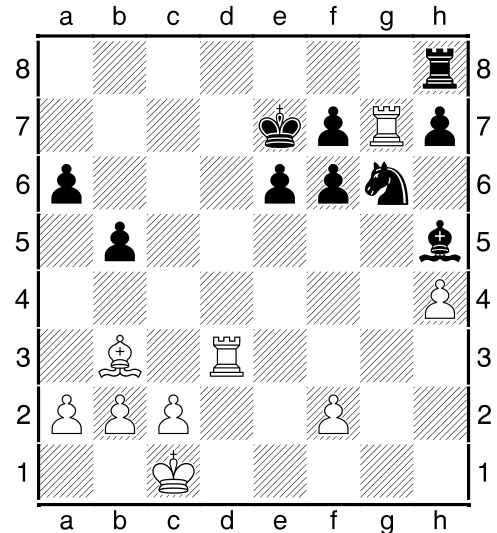
[IM Polivanov,A]

1.e4 c5 2.Nf3 d6 3.d4 cxd4 4.Nxd4 Nf6 5.Nc3 a6 6.Bc4 e6 7.Bb3 b5 8.Bg5 Be7 9.Qf3 Qc7 10.e5 [Against 10.0-0-0 Black should react 10...Nbd7! (not 10...Bb7? 11.Bxe6; or 10...0-0?! 11.e5 Bb7 12.exf6 Bxf3 13.fxe7) , and now 11.Bxe6?! isn't good - 11...Ne5! 12.Bxf7+ Kxf7] 10...Bb7 11.exd6 Bxd6 12.Qe3 Bc5 Pinning ♘d4. 13.0-0-0 Nc6 14.Bxf6 [Ivanchuk's sacrifice 14.Qxe6+!? fxe6 15.Nxe6 is very inventive, but after simple 15...Qe7! 16.Rhe1 Qxe6 17.Rxe6+ Ne7 18.Rde1 0-0-0 19.Rxe7 Bxe7 20.Rxe7 Rhe8 Black has nothing to afraid of - Caillet-Veloso, LSS 2009] 14...gxf6 15.Nd5



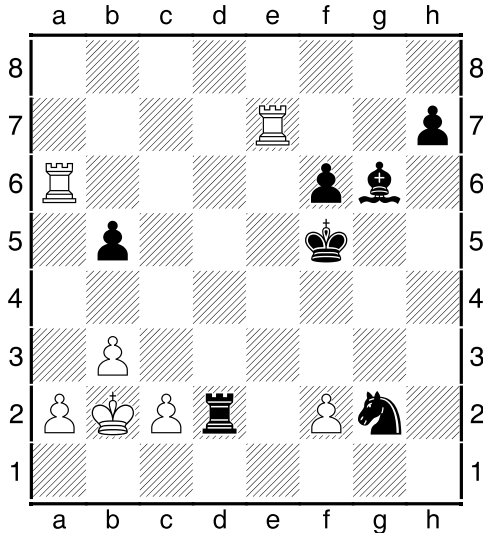
[15.Ne4 also practised, but White can hope at best only for the draw: 15...Bxd4 16.Rxd4 Nxd4 17.Nxf6+ Kf8 18.Qxd4 Rd8 19.Qh4 h6 20.c3 Qe5 21.Nh7+ Ke8 (after 21...Kg7 22.Bc2 Rhe8 23.Kb1! f5 24.f4 Qc7 25.Nf6 Rf8 26.Nh5+ Kh8 27.Re1 very complicated position arisen) 22.Nf6+ = , Kogan-Sutovsky, Ashdod 2006] 15...Qe5!N [That's a step forward in this line in comparison with 15...Qd8 16.Qf4

(16.c3 Na5! 17.Nf4 Nxb3+ 18.axb3 Qe7 Δ 0-0-0) 16...Bxd4 (16...exd5? loses on the spot: 17.Nxc6 Bxc6 18.Rhe1+ Kf8 19.Qh6+ Kg8 20.Rd3! Bxf2 21.Re2+-) 17.Nc7+ Ke7 18.Rhe1! Qd6 (18...e5 19.Nd5+ Kd6 is too dangerous) 19.Qxd6+ Kxd6 20.Nxa8 Bxa8 21.c3 Kc5 with slightly worse position, Pavasovic-Karjakin, Kallithea 2008. Now events are developing in a forced way.] 16.Qxe5 Nxe5 17.Nc7+ [17.f4 0-0-0] 17...Ke7 18.Nxa8 Bxg2! 19.Rhg1 Bxa8 Black has only a pawn (a doubled one) for an exchange, but now Hernandez wants to take on d4 with further Nf3, and that's serious. 20.Rg7?! Intending Nxe6, but this idea is refuted at once. [Simple 20.c3? is bad due to 20...Bxd4 21.cxd4 Nf3 22.Rg3 Rc8+ 23.Kb1 Be4+! 24.Ka1 Nxd4; 20.Rg3 was the optimal choice, though after 20...f5 21.Re3 Be4! Black has easy play.] 20...Bxd4 21.Rxd4 Ng6 ♖g7 falls in trap - Kf8-g7 is on agenda. 22.h4 Bf3! [Two goals at the same time - preventing h4-h5 and withdrawing bishop from a8 to avoid 22...Kf8 23.Rxh7 Rxh7 24.Rd8+ Kg7 25.Rxa8 Rxh4 26.Rxa6] 23.Rd3 Bh5



24.Bxe6?! [This sacrifice leads to the end-game with dubious prospects. Best chances to save half-point were consisted in 24.Rc3 Kf8 25.Rxg6 hxg6 26.Rc8+ Kg7 27.Rxh8 Kxh8 28.c4! , and White shows own trumps, for example: 28...Be2 29.c5

Bf3 30.a4 , and after exchange on b5 white king goes to b4.] **24...Kxe6 25.Re3+ Kf5 26.Rxf7 Nxh4 27.Ra7** Dreaming about passer on "a"-file, but black pawns are gonna be faster. **27...Ng2 28.Ree7 Rd8 29.b3 Rd1+ 30.Kb2 Bg6!** ♖c2 will be attacked. **31.Rxa6 Rd2**



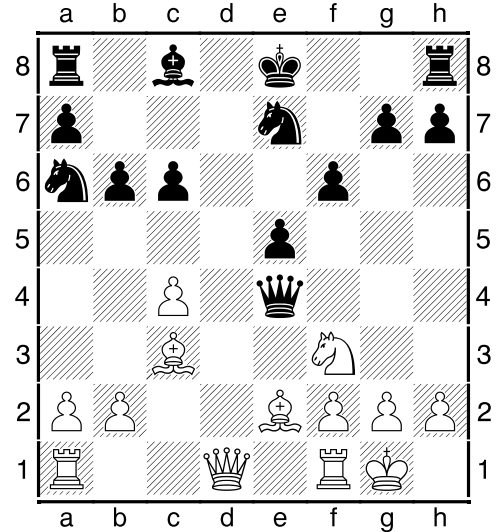
32.Rb7? [This is just a waste of time. Was necessary to form passed pawn as soon as possible – 32.a4 bxa4 33.bxa4 , and in case of straightforward 33...h5?! White could be OK: 34.a5 h4 35.Ra8 h3 36.a6 Nf4 37.Rh8 Bh5 38.a7 Bf3 39.Re3 , achieving draw with bishop chase.] **32...Rxf2 33.Rxb5+ Kg4** Now ♕f6 will come ahead. **34.Rc6 f5 35.a4 f4 36.Rb8** [36.a5 Be8] **36...Ne3 37.a5 Nxc2 38.Kc3 Ne3** Giving no time for a5–a6. **39.Kb4 f3 40.Re6 Nd5+ 41.Kc5 Nf4 42.Rd6 Rc2+ 43.Kb6 f2** One step to promotion. **44.Rd1 Nd5+ 45.Kb7 Rc7+ 46.Ka8 Ne3 47.Rb4+ Kg3 48.Rh1 Rc4!** Excellent finish. ♖h1 is lost, so ♕f2 will be turned to queen. **0-1**

(02) Holzke,F (2497) - Brkic,A (2598)
[D31]

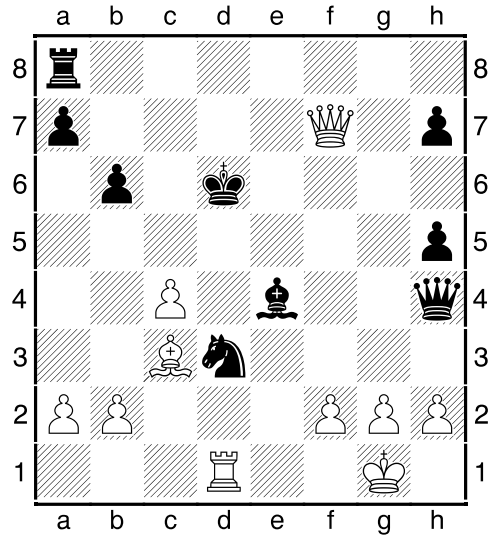
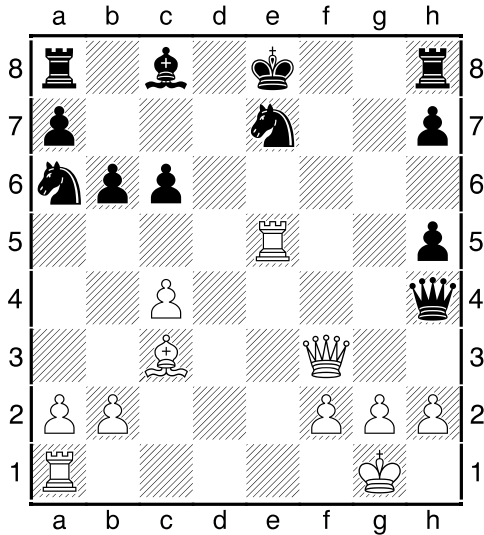
Biel MTO Open Biel SUI (5), 21.07.2011
[IM Polivanov,A]

1.c4 e6 2.Nc3 d5 3.d4 c6 4.e4 dxe4 5.Nxe4 Bb4+ 6.Bd2 Qxd4 7.Bxb4 Qxe4+ 8.Be2 Na6 9.Ba5 [9.Bd6 could be seen in a game Kornev–Galkin, CZM 05/2008.] **9...b6** [This is more reliable, than sharpness after 9...f6 10.Qd8+ Kf7 11.0-0-0]

10.Bc3 [10.Qd6 is also possible, but after 10...Bd7 (10...bxa5? fails in view of 11.Rd1 f6 12.f3+-) 11.Bc3 f6 12.0-0-0 0-0-0 13.Qa3 Kb7 14.Bf3 Black can defend owing to maneuver 14...Qf4+ and Qc7 with good play.] **10...f6 11.Nf3** [11.Qd6 Bd7 – as in annotation to 10th move.] **11...Ne7 12.0-0 e5?**



[Usually this move is being made after preliminary 12...0-0 13.Re1 – 13...e5 14.b4 Δ Qa4, Rad1, and White has enough compensation. But now there is an additional possibility for White, and Holzke uses it.] **13.Nxe5!** This is the first piece's sacrifice. Now comes another one. **13...fxe5 14.Bh5+ g6 15.Re1 Qh4** [15...Qxc4 16.Rxe5 Be6 17.Be2+-] **16.Rxe5** [As promised, but such feeling, that 16.Bf3! even stronger: 16...0-0 17.Rxe5 Nc5 18.g3! Qf6 19.Re3 , Goloschapov–Halasz, Austria 2001, and now Black can easily resign because of 19...Qg5 20.Qd4 Ne6 21.Rxe6+-] **16...gxh5 17.Qf3!?N**



[Interesting novelty. 17.Qd6 Bd7 18.Rd1 met before, and now 18...0-0! 19.g3 Qf6 guarantees a draw: 20.Rxe7 (20.Qxf6 Rxf6 21.Rxe7 Bg4!) 20...Qxf2+ 21.Kh1 Qf3+ ; maybe, Brkic figured on this line, but...] **17...Bg4?** [White's innovation could be parried by 17...Bd7! : 18.Re4 (18.g3 Rf8; 18.Rxh5 Qxc4 19.Bxh8 Bg4) , and only now 18...Bg4 (18...Rf8 19.Qxf8+ Kxf8 20.Rxh4 Be8!) with possible repetition by means of 19.Rxe7+ Qxe7 20.Qxc6+ Kf7 21.Re1 Be2 22.Qd5+ Kg6 23.Qc6+] **18.Qxc6+ Kf7 19.Qh6!** Very strong move, which probably was underestimated by Black. **19...Ng8** [19...Ng6 20.Rg5 Rag8 21.f4! , and queen h4 will be lost.] **20.Rf5+!** [White does the right thing, continuing to attack. Materialistic 20.Qf4+?! Qf6 21.Re7+ Kxe7 22.Qe4+ Kf7 23.Qxa8 is met by 23...Ne7! 20.Qe3!? was also powerful.] **20...Bxf5 21.Qg7+ Ke8 22.Re1+ Be4 23.Qxh8** Now after check by queen (or f2-f3) bishop e4 will be doomed, and Re1 connects to the game. **23...Nc5?!** [23...Kd7 24.Qd4+ Kc8 25.Rxe4 Qd8 , though after 26.Qe5 Whites grabs pawns "h".] **24.Qxg8+ Kd7 25.Qf7+** Black is losing more material. **25...Kd6** [25...Qe7 26.Qxe7+ Kxe7 27.f3+-] **26.Rd1+ Nd3**

[26...Kc6 27.Be5+-] **27.Rxd3+! Bxd3 28.Bb4+ Kc6** [28...Ke5 29.f4+! Qxf4 (29...Kd4 30.Qd5+ Ke3 31.Qf3+ Kd4 32.Bc3+) 30.Bd6+] **29.Qd5+ Kc7 30.Bd6+ Kc8 31.Qxa8+ Kd7 32.Qxa7+ Ke6** [32...Kxd6 33.Qa3+] **33.Qxb6** Three pawns up, so even opposite-coloured bishops don't help. **33...Qxc4 34.h3 h4 35.b3 Qe4 36.f3 Qe1+ 37.Kh2 Kd5 38.Qc5+ Ke6 39.Qb6 Kd5 40.Bf4 Qe7** Realizing, that time control is passed, Black surrendered. **1-0**

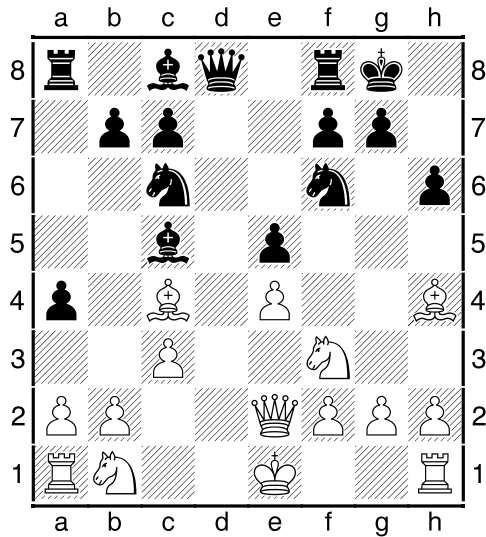
(03) Hector, J (2568) - Grandelius, N (2542) [C50]

ch-SWE Master Elite Vasteras SWE (8), 23.07.2011

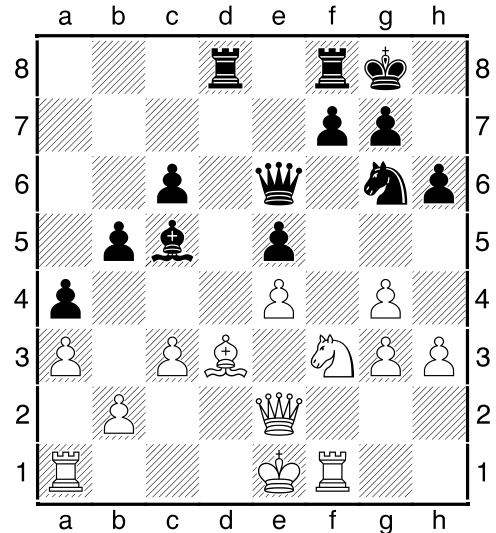
[IM Polivanov, A]

1.e4 e5 2.Nf3 Nc6 3.Bc4 Nf6 4.d3 [Sometimes Hector preferred something exotic like 4.Qe2!?, as in a game Hector-Smith, CZM 03/2011] **4...Bc5 5.c3 0-0 6.Bb3** [Now Black can conduct d7-d5 at one go. But in case of 6.0-0 it's possible too: 6...d5 7.exd5 Nxd5 8.b4 Be7 (8...Bb6? loses a piece after 9.Bxd5 Qxd5 10.c4 Qe6 11.c5 e4 12.dxe4 Qf6 13.e5! (13.Qb3 at once also good) 13...Nxe5 14.Nxe5 Qxe5 15.Qb3+- , Seczek-Drazkowski, corr 1986) 9.b5 Na5 10.Bxd5 (10.Nxe5 Bf6 11.f4 meets 11...Nxc3! 12.Nxc3 Qd4+ 13.Rf2 Bxe5 14.fxe5 Nxc4 15.dxc4 Qxc3) 10...Qxd5 11.c4] **6...d5 7.Qe2** [Another way to hold the centre is 7.Nbd2 , but White wants to develop by means of Bg5.]

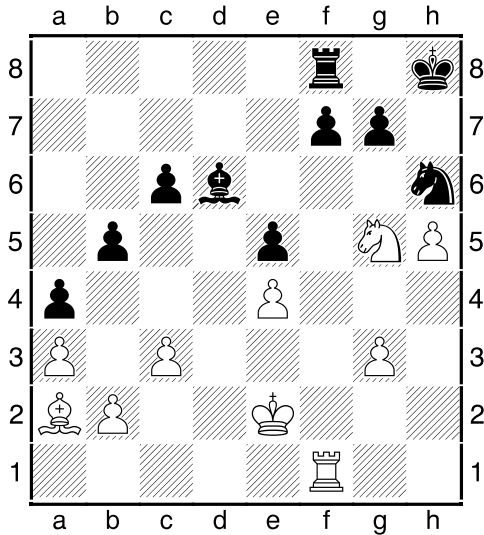
7...a5 8.Bg5 [8.a4?! Be6! , and white bishop has to abandon a diagonal a2-g8:
9.Bc2 (9.Nbd2 Nh5!)] 8...dxe4 9.dxe4 a4
10.Bc4 h6 11.Bh4



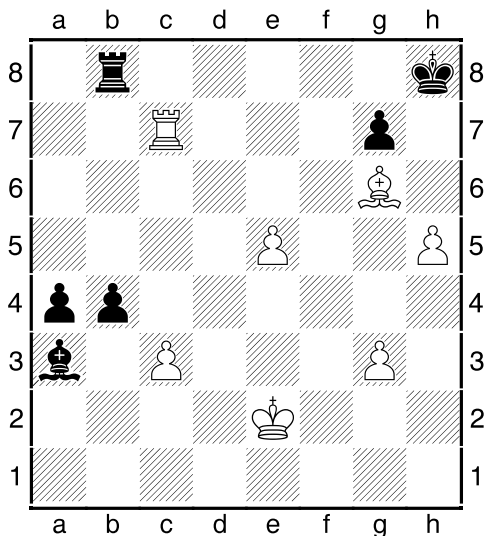
11...Qd6N [11...Be7 12.Bxf6 Bxf6 13.Na3 Qe7 14.0-0 Nd8!i , Pancevski-Georgiev, Skopje 2011. But Black's move isn't weaker.] 12.Nbd2 [12.Bxf6 Qxf6 13.0-0 Ne7!]
12...Nh5! 13.Bg3 Bg4 14.h3?! Nxb3
15.fxb3 Bxb3 16.Nxb3 Rad8 As a result – Grandelius already stands better. 17.Bd5 Qg6 18.g4 Ne7 19.Bc4 [19.Bxb7 is dangerous: 19...Qb6 20.Ba6 Rd6 21.Bc4 Be3! 22.Rd1?! Bf2+ 23.Kf1 Rxd1+ 24.Qxd1 Bg3 25.Qe2 Rd8+ with Rd1 idea.] 19...c6 20.Rf1 [20.Nxe5 Qf6 21.Nf3 a3+] 20...b5 21.Bd3 [And here 21.Nxe5 isn't possible: 21...Qd6 22.Bxf7+ Rxf7 23.Nxf7 Qg3+] 21...Qe6 22.a3 Ng6 23.g3



23...Qb3? [Black wanted to prevent white king's castle, but missed Hector's reply. Actually, White's castling is even favorable, for example: 23...Rd6 24.0-0 Rfd8 25.Bb1 (otherwise Qa2) 25...Bxa3! 26.bxa3 Qb3 27.Rxd6 Qxc3+ 28.Qc2 Qxa3+ – three pawn for a piece is too much here.] 24.Bb1! Now queen has to step back. 24...Qe6 25.Ba2! To the native diagonal. 25...Qe7 26.Rd1 Kh8 27.h4! Yet another strong move – White threatens by g5 or h5. 27...Rd6?! [Worth to try 27...f6 28.h5 (28.g5!?) 28...Rxd1+ 29.Kxd1 Rd8+ 30.Kc2 Nf8 , although White is more perspective already; 27...Rxd1+ 28.Kxd1 Bxa3 is not enough – 29.bxa3 Qxa3 30.Qc2 , and king is escaping to e2.] 28.h5 Rxd1+ 29.Kxd1 Qd6+ 30.Qd2! Very reasonable decision – beware of sacrifice on a3, Hector has decided to fix his edge in the endgame. 30...Ne7 31.Qxd6 Bxd6 32.g5 [32.Nh4 f6 33.g5! , aiming to seal black king after g5-g6, looks effective: 33...hxg5? 34.Ng6+ Nxb6 35.hxg6 with mate.] 32...Ng8 33.Ke2 hxg5 34.Nxg5 Nh6

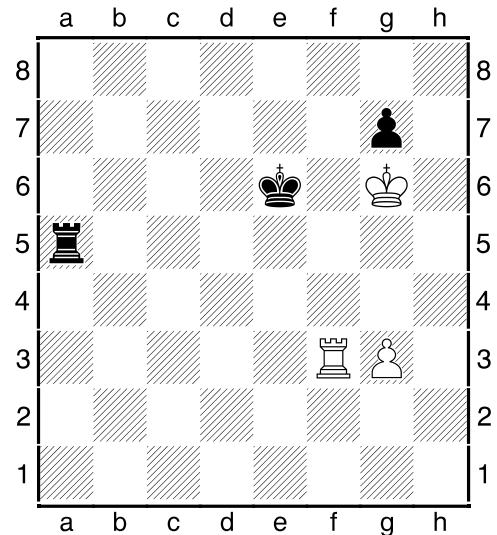


Black is looking for salvation in opposite-coloured bishops' ending. **35.Nxf7+?!** [White keeps the rooks, but full exchange would make a victory closer: 35.Rxf7! Nxf7 36.Nxf7+ Rxf7 37.Bxf7 c5 38.Be8 b4 39.Kd3+-, and Black's defence will be stretched by two passed pawns; besides, 35.Rd1!? was simple and good.] **35...Nxf7 36.Bxf7 c5 37.Rd1 Be7 38.Bg6 Bg5** Intending to attack white ♖. **39.Rd5 Bc1 40.Rxe5** To make a passer along "e"-file. **40...Bxb2 41.Rxc5 Rb8 42.e5 Bxa3 43.Rc7 b4**



44.cxb4?! [White hasn't calculated properly a variation 44.e6 b3 45.e7 Bxe7 46.Rxe7 a3 47.Ra7 a2 – black pawns are stopped, 48.c4+-] **44...Bxb4 45.Ra7 a3** Now win-

ning is hampered – if White will promote pawn "e", Black does the same with "a" one. **46.Kd3** [46.e6 Kg8 47.e7 Bxe7 48.Rxe7 Ra8 49.Bf7+ Kf8 50.Rd7 a2=] **46...Kg8 47.Ke4 Kf8 48.Bf7** To the same diagonal again. **48...Rb5 49.Ba2** [Rejecting an ending, which emerges after 49.Bd5 Ra5 50.Rf7+ Ke8 51.Rxg7 a2 52.Bxa2 Rxa2 – it's really quite unclear.] **49...Bc3 50.e6 Rxh5 51.Rxa3 Ra5?** [Grandelius, probably, has no time to evaluate rook endgame as it should. 51...Re5+ 52.Kf4 Rc5, and draw is quite probable.] **52.Rxc3 Rxa2 53.Rf3+! Ke7 54.Kf5 Ra5+ 55.Kg6 Kxe6**



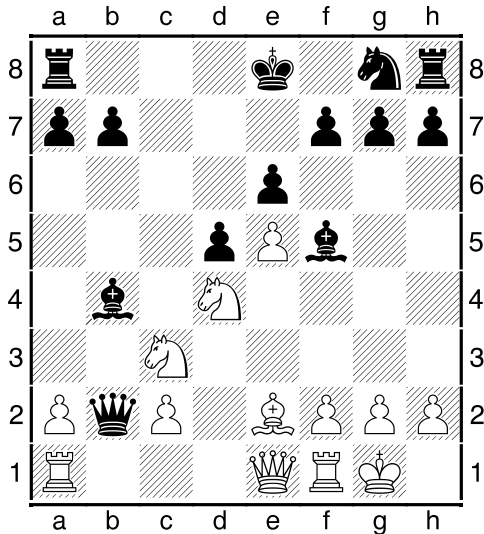
56.g4! [56.Kxg7? would lead to the simple draw after 56...Rg5+ 57.Kh6 Rg8; now White is going to bring ♖ to g5, and finish off ♗g7 after that.] **56...Ra7 57.Re3+ Kd6 58.Re8 Ra4 59.g5** [59.Kg5?? Ra6! 60.Rg8 Ke7!=] **59...Ra5 60.Re1** [60.Rg8 wins faster than anything else: 60...Ke7 61.Rxg7+ Kf8 62.Kh7!+-] **60...Rb5 61.Rg1 Rb7 62.Kh7 Ke6 63.Kg6** [63.g6? Kf6 64.Rf1+ Kg5 65.Rf7 Rb6 66.Rxg7 Kh5!=] **63...Ra7 64.Re1+ Kd6 65.Kh7 Rb7 66.g6 Ra7 67.Re8 Rb7 68.Rg8** Pawn g7 falls finally. **68...Rb2 69.Kxg7 Ke6 70.Rf8 Rg2 71.Rf1 Re2 72.Kh7 Ke7 73.Rf4** [73...Rh1] **73...Re1 74.Rh4 1-0**

(04) Svidler,P (2739) - Postny,E (2618) [B12]

8th World Teams Ningbo CHN (8),
25.07.2011

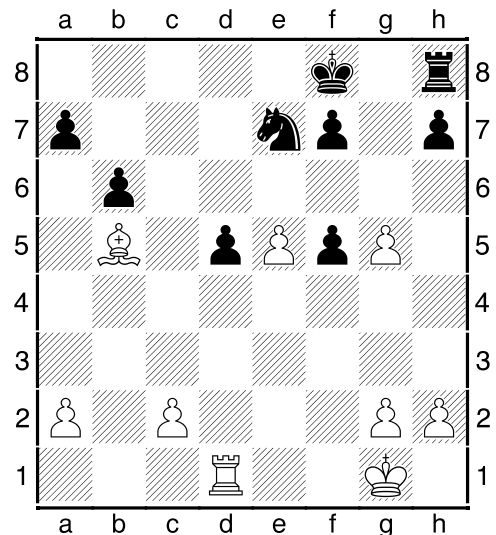
[IM Polivanov,A]

1.e4 c6 2.d4 d5 3.e5 Bf5 4.Nf3 e6 5.Be2 c5 6.Be3 Qb6 7.Nc3 Nc6 [7...Qxb2 8.Qb1 Qxb1+ 9.Rxb1 – Inarkiev–Eljanov, CZM 06/2010] **8.0-0 Qxb2** [This line is very dangerous, but 8...c4 isn't resort too – 9.Bxc4!? (perhaps, preliminary 9.Rb1! even stronger) , and 9...dxc4? virtually loses: (only 9...Qxb2 10.Nb5 is suitable here) 10.d5 Qxb2 11.dxc6 bxc6 12.Qd4 Bb4 13.Rfd1! Qxc3 14.Qd7+ Kf8 15.Qb7 Re8 16.Bd2+- , Perez–Fernandez, Ferrol 2002] **9.Qe1 cxd4** [9...c4 10.Rb1 Qxc2 11.Bd1 Qxb1 (11...Qd3? 12.Ba4 Rc8 13.Rxb7 1-0, Smirin–Popov, Peterburg 2010) 12.Nxb1 Bxb1 13.Ba4 Bd3 14.Qa5! , and after 14...Bxf1 15.Qc7 queen brings destruction.] **10.Bxd4 Nxd4 11.Nxd4 Bb4**



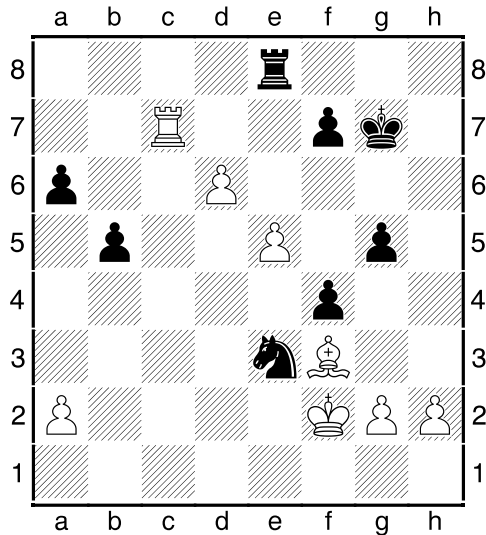
12.Rb1 [12.Ndb5 , examined in Karjakin–Tukhaev, CZM 11/2010, hasn't found a lot of support – as it turned out, after 12...Ba5! 13.Rb1 Qxc2 14.Rb3 Ne7 White should force a draw: 15.Nd6+ Kf8 16.Nxb7 Bb6 17.Nd6 Ba5 18.Nb7 1/2, Smirnov–Maletin, RUS Cup final 2010.] **12...Bxc3** [In above-named game mentioned 12...Qxc3 13.Rxb4 Qxe1 14.Rxe1 b6 15.Bb5+ Kf8 16.Nxf5 exf5 , but as we'll see, it's the same.] **13.Rxb2 Bxe1 14.Rxe1 b6** [14...0-0 15.Reb1 b6 16.Nc6+-] **15.Bb5+ Kf8**

16.Nxf5 exf5 17.Rb3! Quite direct approach – white ♖ wants to the 7th rank. **17...Ne7 18.Rc3 Rc8N** [Attempt to improve Black's play, because in the following game one couldn't do almost nothing: 18...a6 19.Bd7 g6 (19...Ra7 20.Bxf5) 20.Rc7 b5 21.e6 f6 22.Re3! Rb8 23.Ra7 Rb6 24.Rc3 h5 25.Bc8 Rh7 26.Rcc7 f4 27.Ra8 1-0, Gashimov–Ivanchuk, Reggio Emilia 2011; so, Postny decided, that an exchange a couple of rooks will ease a defence.] **19.Rxc8+ Nxc8 20.Rd1 Ne7 21.f4!** [Svidler does right, declining an immediate 21.c4 : 21...Ng6 22.cxd5 Ke7! (22...Nxe5 23.Re1 f6 24.f4+-) 23.d6+ Ke6 , and ♙e5 deprived of any help.] **21...g5** [21...f6 22.exf6 gxf6 23.c4 Ng6 (23...dxc4 24.Rd8+ Kg7 25.Rd7 Kf8 26.Bxc4+-) 24.cxd5 Ke7 25.d6+ Ke6 26.g3+- – feel the difference with previous annotation.] **22.fxg5**



22...h6 [Apparently, Black couldn't pick one from rook endings, so he decided to postpone a choice; 22...Kg7 23.c4 dxc4 (as well as 23...Rc8 24.cxd5 Rc5! 25.d6 Rxb5 26.dxe7 Rxe5 27.Rd7 Kg6 28.Rxa7 Kxg5) 24.Rd7 c3! 25.Rxe7 Rc8 26.Bd3 c2 27.Bxc2 Rxc2 28.Rxa7 – both situations have quite equal, good chances for salvation.] **23.c4 hxg5?** [But that's a mistake (maybe, even decisive). Only 23...dxc4 24.Rd8+ Kg7 25.Rd7 c3 (the same trick) 26.Rxe7 Rc8 27.Bd3 (27.gxh6+? Kf8+-) 27...c2 28.Bxc2 Rxc2 29.gxh6+ Kxh6 30.Rxa7 Kg5 – evaluation is the same, as in

previous line.] **24.cxd5** Two such pawns – is a terrible force. **24...Ng6 25.Rf1** [25.d6 was possible right away, but Svidler evokes f5–f4 move – maybe, to avoid jumps like Nf4.] **25...f4 26.d6 Kg7** [26...Nxe5 27.Rc1 Kg7 28.d7 a6 29.Rc8+–] **27.Re1 Nf8** Knight is transferring to the better position. But bishop is doing the same thing. **28.Bd3! Ne6 29.Bf5 Nd4 30.Bg4 Re8 31.Kf2** [And again White didn't hurry. 31.Rc1! , and 31...f5 isn't dangerous: 32.exf6+ Kxf6 33.d7 Rd8 34.Re1 Nf5 (34...Kf7 35.Re8) 35.Re8! Rxd7 36.Rf8+] **31...Nc2 32.Rc1 Ne3 33.Bf3** **b5** [33...Rxe5 34.d7] **34.Rc7 Nc4?!** [Loses in a forced way. ~~34~~...a6



, though White has here a mathematical path to the winning: 35.h4!! (35.Bc6? Rxe5 36.d7 Ng4+ 37.Kf1 Nxe2+ 38.Kg1 (38.Kf2? g4+) 38...Ng4 39.Kf1 Nh2+=) 35...gxh4 36.Bc6 Ng4+ (36...Rd8 37.e6+–) 37.Kf1!+–] **35.Bc6 Rd8 36.e6! Nxd6 37.Rd7** So, this Qb6 system in a crisis... **1-0**

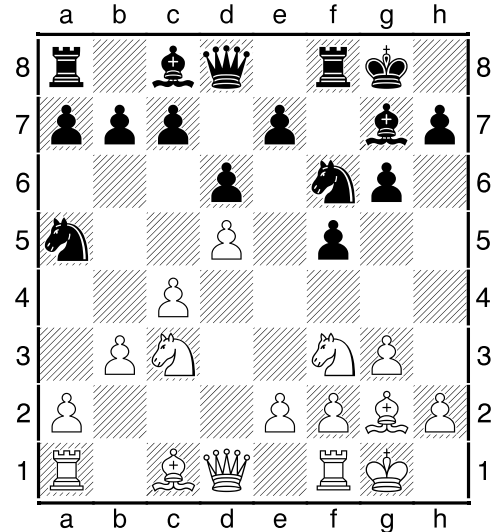
(05) Bachmann, Ax (2550) - Tristan, L (2450) [A89]

Il Grafica Yael GM Torre Blanca ARG (3), 25.07.2011

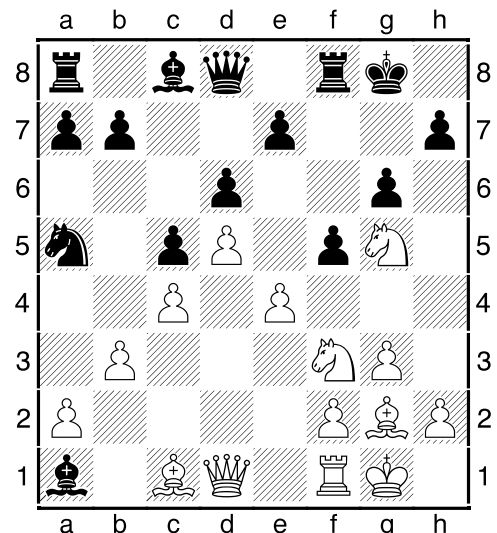
[IM Polivanov, A]

1.Nf3 d6 [If Black wants to play Dutch, one can apply this order of moves to avoid any gambit like 1...f5 2.e4!? fxe4 3.Ng5] **2.d4 f5 3.g3 Nf6 4.Bg2 g6 5.0-0 Bg7 6.c4 0-0 7.Nc3 Nc6 8.d5 Na5** [Another continuation

– 8...Ne5 9.Nxe5 dxe5 , but after 10.Qb3 (10.e4 f4!) 10...Kh8 11.Rd1 h6 12.c5 g5 13.Bd2 Δ Be1, Qa3, d6 or Na4, Ba5, d6 White's initiative is more ponderable.] **9.b3!?**

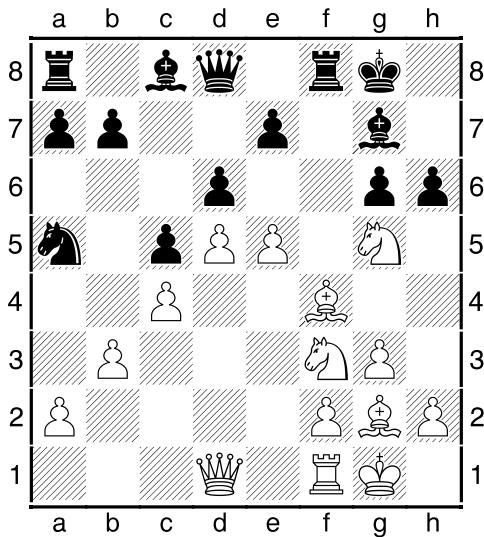


Curious move instead of solid 9.Qa4, 9.Nd2 or 9.Qd3. Game can come to well-known patterns after 9...c5 10.Qd3, unless Black decides to accept an exchange sacrifice... **9...Ne4** And Tristan does! **10.Nxe4 Bxa1 11.Neg5 c5** [11...Bg7? 12.Nd4] **12.e4!**



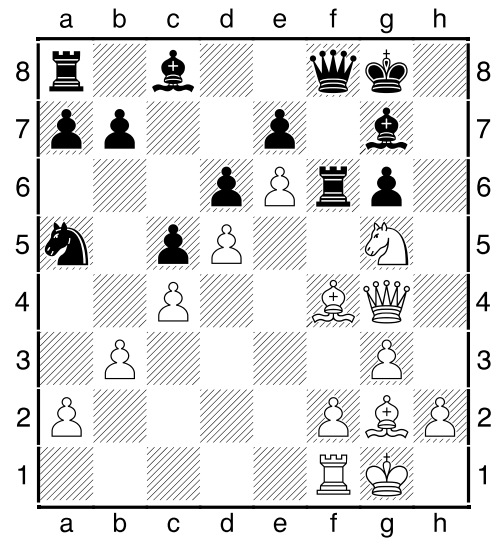
[This is more aggressive, than 12.dxc6 Nxc6 13.b4 h6 (13...Nxb4? 14.Bd2) 14.Qd5+ Kg7 15.Ne6+ Bxe6 16.Qxe6 Bf6 , and White's compensation is not enough.]

12...f4?!N Quite strange novelty. Giving away such pawn out of the blue... [But Black's idea appears more clear after examining the following lines: 12...fxe4 13.Nh4! Bf6 14.Bxe4 Bxg5 (14...e5 leads to disaster after 15.Nxh7! Bxh4 16.Nxf8 Qxf8 17.gxh4 Bf5 18.f3+-, Piorun-Malaniuk, Poland 2010) 15.Bxg5 Rf7 16.Re1 with such plan - Bh6, Qd3 and sacrifice on g6; 12...Bg7 13.exf5 (13.Nh4!?) 13...Bxf5 14.Nh4 e5 15.dxe6 Qe7 16.Nxf5 Rxf5, Brodsky-Caspi, Hoo-geveen 2009, and 17.Nf7! guarantees an edge; 12...Bf6 wins a tempo in comparison with 12...fxe4: 13.exf5 (13.Nh4? e5) 13...Bxf5 14.Nh4 Bd7 15.Be4 Bxg5 16.Bxg5, but still there is no time for counterplay like 16...b5?! - 17.Bxg6! hxg6 18.Nxg6 Rf7 19.Re1+-; So, 12...f4 is designed to prevent white bishop's transfer to e4.] **13.Bxf4 Bg7 14.e5 h6?**



[N4...dxe5 15.Bxe5 h6 16.Ne4 b6, and ♘a5 has some chances to come back in the game.] **15.e6!!** Brilliant decision. Now Bachmann is gonna attack without a rook, but the whole Black's queenside is cut off instead. [Apparently, Black hoped only for 15.Ne4 g5] **15...hxg5 16.Nxg5** Now Qg4-h4 is on agenda. **16...Rf6** [16...Rxf4 17.gxf4 Qf8 18.Nf7 Bd4 appears to be a decent try, but 19.Kh1! leaves no chance, for example: 19...Qg7 20.Be4 Kf8 21.Rg1 Bxf2 22.Rxg6 Qd4 23.Bd3+-; 16...Bd4 17.Be4 Kg7 doesn't save too - 18.Bxg6!+-

17.Qg4 Qf8



[17...Bh6 loses after 18.Ne4! Rxf4 19.Qxg6+ Bg7 20.gxf4 Qf8 21.f5, and rook just aims to h3. So, Black wants that bishop will be protected at h6; 17...Rxf4 is still not an option: 18.gxf4 Qf8 19.Nf7 Bf6 20.f5+-] **18.Bd2!** ♘a5 is absolutely useless, it even impedes. [It seems, that 18.Qh4 Bh6 19.Nf7 Bg7 20.Bd2 would be the same, but here Black has additional opportunity 20...Rxf7] **18...b6 19.Qh4 Bh6 20.Nf7 Bg7 21.Be4!** Now Rxf7 can be forgotten because of Bxg6. **21...Nb7 22.g4!** Final subtlety. After g4-g5 Black will be deprived of last defender. **22...Nd8 23.Nxd8** [23.g5? Nxf7 24.gxf6 Bxf6 25.exf7+ Qxf7±] **23...Qxd8 24.g5 Rxe6** [Equally matched to capitulation, but what else? 24...Rf5 25.Bxf5 gxf5 26.g6 Kf8 27.Qh7 and Bh6+-.] **25.dxe6 Bxe6 26.Bxg6 Qd7 27.Re1** ♖ goes to f4, and that's the end of story. **27...Rb8 28.Re4 1-0**

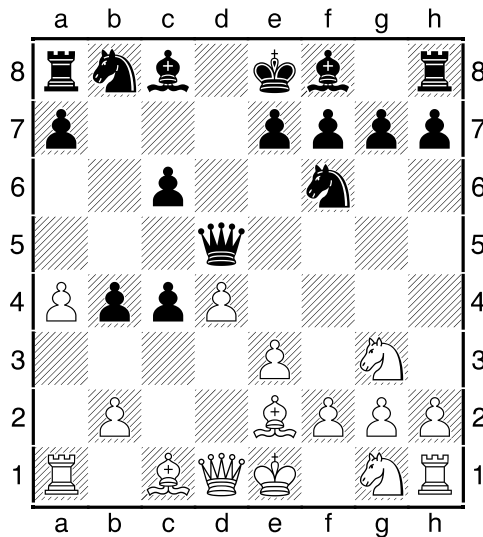
(06) Yu, Yangyi (2672) - Balogh, Csaba (2643) [D10]

8th World Teams Ningbo CHN (9), 26.07.2011

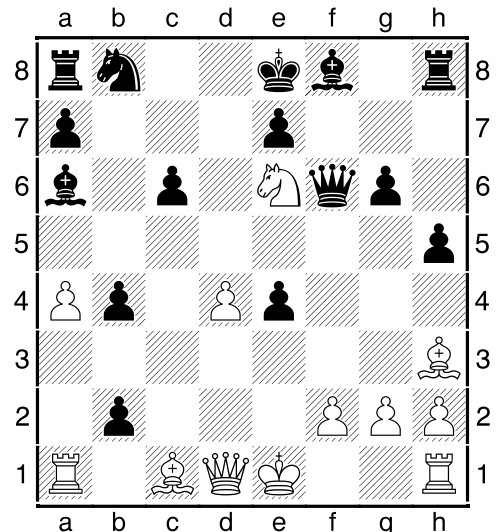
[IM Polivanov, A]

1.d4 d5 2.c4 c6 3.Nc3 dxc4 4.e3 b5 [♗c4 can be defended differently: 4...Be6!? 5.Nge2 (5.Nf3 is the main choice here) 5...b5 6.Nf4 Bc8 7.a4, and after 7...e5! Black has good chances to equalize the game.] **5.a4 b4 6.Ne4 Qd5 7.Ng3 Nf6**

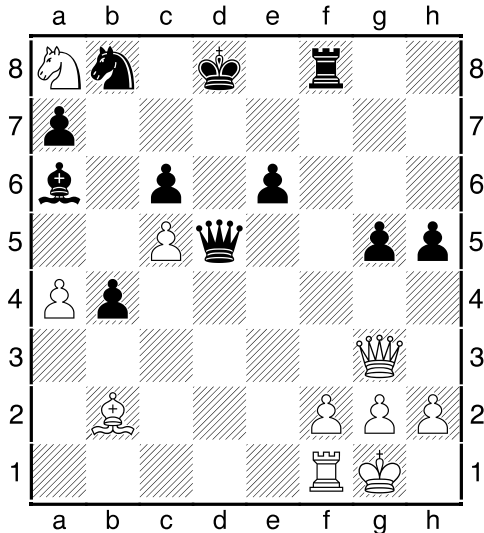
8.Be2



With firm intention to conduct e3–e4. **8...Ba6** [8...h5 9.e4 Nxe4 10.Bf3 Bf5!? mentioned in Shabalov–Lenderman, CZM 12/2010 – but maybe this pin is not very dangerous, so some useful move can be made instead 8...h5?] **9.e4 Nxe4!N** [That's it. After 9...Qa5 10.Nf3 e6 11.Ne5 White is clearly better.] **10.Bf3 f5** Now White is without two pawns, so he has to hurry with compensation. **11.N1e2** Heading to f4 and preventing unpleasant c4–c3. **11...g6** [11...c3 12.bxc3 bxc3 13.Qc2±] **12.Nf4 Qf7** **13.Nxe4 fxe4** **14.Bg4!** [14.Bxe4 Bg7, and Black is gonna castle with clear conscience. But now Ne6 is threatening.] **14...h5** **15.Be6** [15.Bh3? g5 16.Ne6 g4+] **15...Qf6** **16.Bh3 c3?!** Looks like the most reasonable decision – White king is also delayed at center. But that's a mistake. [16...Bh6? fails too: 17.Ne6 e3 18.0-0!+- (not 18.fxe3?? Qh4+ 19.Kd2 Qf2+ 20.Qe2 c3+); 16...g5! is the best – 17.Nxh5 Qg6 18.Bg4 (18.Ng3 allows exchange's sacrifice on h3) 18...Nd7 19.Ng3 0-0-0 20.Qd2! with complicated play.] **17.Ne6** [17.bxc3 Bc4!, and there is no Ne6 anymore.] **17...cxb2**



18.Bxb2?! [18.Bg5!!, playing in old master's spirit, makes life hard for Black: 18...bxa1Q 19.Qxa1 Qf7 20.d5! (connecting queen a1) 20...Bc8 21.Qe5!, and White's attack seems decisive – 21...Bxe6 (21...Na6 22.dxc6+-) 22.Bxe6 Qg7 23.Qc7 Qa1+ 24.Ke2 with mate. But of course, it's difficult to foreseen all this at 18th move.] **18...e3!** The only counterstrike at Black's disposal. **19.Qf3** [19.fxe3?! Qh4+ 20.Kd2 Qf2+ 21.Kc1 Qxe3+ 22.Qd2 Qxe6! 23.Bxe6 Bh6+] **19...g5!** Disturbing the bishop h3 with g5–g4. **20.Nc7+ Kd8** **21.Ne6+** [21.Nxa8 g4] **21...Ke8** **22.Bf5?!** Apparently, Yangyi didn't want to give up with white pieces so quickly (especially in the team tournament). But most likely perpetual check was the best option. **22...Bc8!** **23.Nc7+** [If 23.fxe3 Bxe6 24.Bxe6 Qxe6 25.d5, then 25...cxd5 26.Bxh8 g4 27.Qe2 Bh6 28.Bd4 Nc6, and Black develops.] **23...Kd8** **24.Nxa8 Qxf5** [Black could include 24...exf2+ 25.Qxf2, but Balogh has something else in mind.] **25.Qxe3 Qd5!** That's the key move – queen block any breaks like d4–d5, so Black can easily be engaged in ♘a8's taking. **26.Rc1** White wants to push queen away after Rc5, even by cost of sacrifice. **26...e6** [26...Qxg2 27.Qe5 Na6! 28.Rf1 Rh6 also was strong.] **27.Rc5 Bxc5** **28.dxc5 Rf8** King d8 is in full view, but White hasn't enough recourses already to attack him. **29.0-0 Ba6** Ready for Kc8–b7–a8 route. **30.Qg3**



30...Rf4!? [At first glance this move appears as mistake: why not 30...e5 31.Qxg5+ Kc8 32.Qe7 Nd7-+ ? But Balogh considers everything.] **31.Bf6+ Kc8** **32.Nc7** Seems to be a game changer. But... [32.Bxg5 Rf7] **32...Kxc7** **33.Bxg5 Bxf1** **34.Bxf4+ Kb7** **35.f3** [As it turned out, ending after 35.Bxb8 Qxg2+ 36.Qxg2 Bxg2 37.Be5 Bf3 with further Ka6-a5-a4 is hopeless.] **35...Bc4** **36.Qg7+** [36.Bxb8 Qd4+ 37.Qf2 Qd1+] **36...Qd7** **37.Qh8 Na6** **38.Bd6 Nxc5!** **39.Qb8+** [39.Bxc5 Qd1+ 40.Kf2 Qd2+ 41.Kg3 Qg5+] **39...Ka6** **40.Qxb4 Qxd6** **41.Qxc4+ Kb7** **42.Qb4+ Kc8** White doesn't want to resign, but he has to. **43.h4 e5** **44.Qe1 Qd4+** **45.Kh1 Qf4** **46.Qf2 Nd3** **47.Qxa7 Qxh4+** **48.Kg1 Qd4+** Thus Yangyi lost, but his two compatriot won their games, so China took Silver Medal of World Teams championship. **0-1**

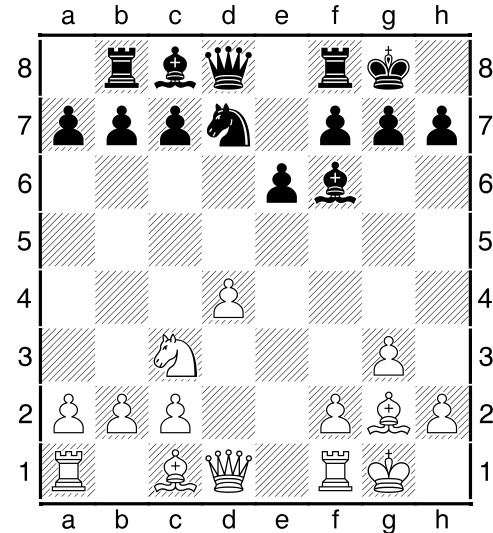
(07) Vachier Lagrave, M (2722) - Pelletier, Y (2590) [C10]

Biel ACCENTUS GM Biel SUI (8), 27.07.2011

[IM Polivanov, A]

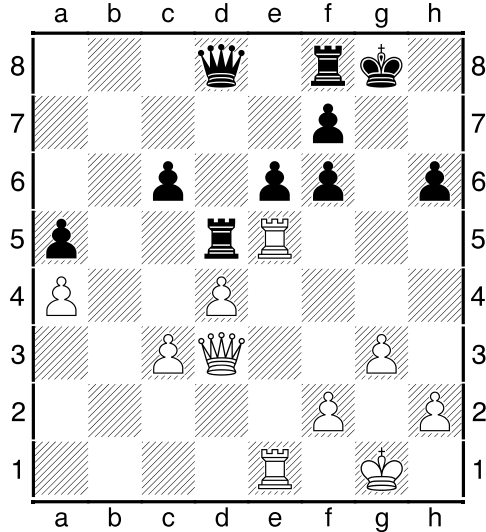
1.e4 e6 **2.d4 d5** **3.Nc3 dxe4** **4.Nxe4 Nd7** **5.g3!?** Curious continuation, directed against fianchetto of bishop c8. Mikhail Botvinnik applied this system one of the first – against Guimard in 1946. **5...Be7** **6.Bg2 Ngf6** **7.Nxf6+** [Two days before, in the game Carlsen-Pelletier was 7.Nc3 0-0 8.Nf3 Nd5 9.Qd3 Nb4 10.Qd2! c5 11.0-0 cxd4 12.Nxd4 Nb6 13.a3 e5! 14.axb4 exd4

15.Nb5 Bf6 16.Rd1 , and in case of exact 16...Re8! (instead of 16...Bg4 17.f3 Bf5 18.g4) 17.c3 Bg4 18.f3 dxc3! position would be equal.] **7...Bxf6** **8.Ne2** Just so, in order not to enclose bishop g2. **8...0-0** **9.0-0 Rb8** Trying to exchange bishops after b7-b6. **10.Nc3!N**

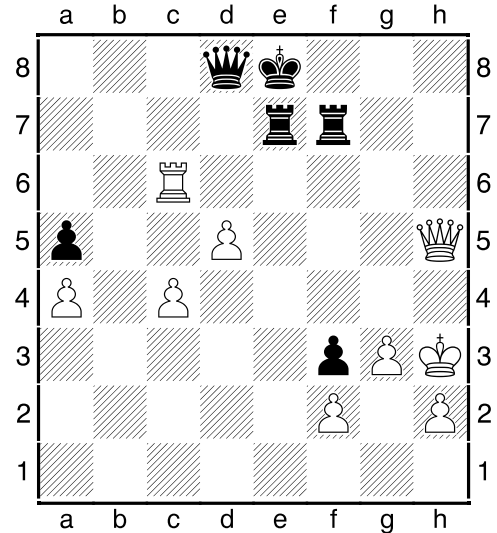


[That's a new way to pose some problems. Earlier met 10.c4 b6 11.Qa4 a6 , and queen a4 can fall under b6-b5.] **10...b5** [Now 10...b6 faces 11.Nb5! a6 12.Na7 Bb7 13.Nc6 Bxc6 14.Bxc6±] **11.Qd3 a6** [11...Bb7 doesn't work in view 12.Bxb7! (less exact 12.Nxb5 Nc5! 13.Qc4 a6 14.Bxb7 Nxb7!f) 12...Rxb7 13.Nxb5 Nc5 14.Qc4 a6 15.dxc5 , and compensation is not sufficient.] **12.a4** Granting no respite for Black. **12...b4** [12...c5 looks attractive, but it doesn't: 13.dxc5 Nxc5 14.Qxd8 Rxd8 15.axb5 axb5 16.Bf4! (16.Be3 b4) 16...e5 17.Be3 with huge edge – white bishops are incredibly strong.] **13.Ne4 a5** Finally Black is ready for Bb7. But Vachier Lagrave finds another catch. **14.Nxf6+ Nxf6** [14...Qxf6 15.Bf4 Qd8 16.Qc4] **15.Bg5** Pin is quite unpleasant. What Black has to do with it? **15...Bb7?!** [Pin was the more emergency issue, than white-squared bishops' swap, that's why 15...h6! 16.Bxf6 Qxf6 is more correct. If 17.Rfe1 , then 17...Rd8! 18.Qc4 (18.Re5 b3!) 18...Qxd4 19.Qxc7 Qb6 20.Qxb6 Rxb6 21.Re5 Ra6 with all chances for successful defence.] **16.Bxb7 Rxb7** **17.Rfe1!** Rook goes to e5 in order to

attack ♖a5. **17...c6** [17...h6 18.Bxf6 Qxf6 19.Re5 Ra7 20.Rae1 with idea Rc5 and Ree5 has no prospects for Black, so Pelletier transfers his rook to d5.] **18.Re5 Rd7 19.c3 bxc3 20.bxc3 Rd5 21.Rae1 h6** [It's hard to manage without this move. 21...Qd7 22.Bxf6 gxf6 23.R5e4 , and major pieces aims to "h"-file.] **22.Bxf6 gxf6?**



[22...Qxf6 23.Qa6 leads to material loss, but after 23...Rxe5 (23...c5?! 24.Rxd5 exd5 25.Qxf6 gxf6 26.dxc5 Rc8 27.Rb1! Rxc5 28.Rb5 Rxc3 29.Rxd5 , and this endgame is lost) 24.dxe5 Qd8 25.Qxc6 Qc8! 26.Qf3 Qc7 ♖c3 is rather weakness, than strength.] **23.Rxe6!!** [Black expected 23.R5e4 f5 24.Rh4 Qf6] **23...fxe6 24.Qg6+ Kh8 25.Qxh6+ Kg8 26.Qg6+ Kh8 27.Re4! f5 28.Qh6+** [28.Rh4+?? Qxh4 29.gxh4 Rg8] **28...Kg8 29.Rxe6** Of course, White eagers more, than perpetual check. Now a mate is threatening after Rg6, Rg7 and Qe6. **29...Rd7 30.Rg6+ Kf7 31.Rxc6?** [White has missed 31.Qh5! , and there is no defence from Rh6 with mate: 31...Ke7 (31...Ke8 32.Re6#) 32.Qe2+! Kf7 33.Qe6#] **31...Ke8** Black king hides, but position remains dangerous. **32.d5 Re7 33.c4** [33.d6 Re1+ 34.Kg2 Qa8! , and White should force draw – 35.d7+ Kxd7 36.Qd6+ Ke8 37.Qg6+] **33...f4!** Reminding, that king g1 also can have some troubles. Now f4–f3 is menacing. **34.Qh5+ Rff7 35.Kg2** Going to h3, but this is not the safest place. **35...f3+** [35...Qb8!? was also good.] **36.Kh3**



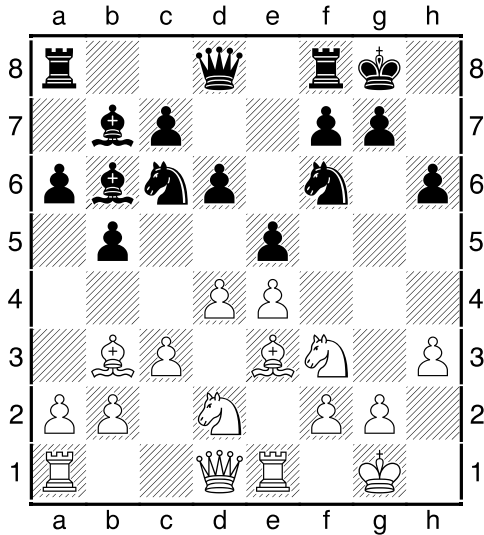
36...Qd7+? [36...Kd7! suggests itself, and White hardly has anything better, than 37.Qg4+ Ke8 38.Qh5 (38.Qg8+ Rf8 39.Qg6+ Rff7 40.g4 Kf8) 38...Kd7 with repetition – 39.Rh6?! isn't good due to 39...Qf8! , intending to take on h6.] **37.g4** Now king has time to reach square g3. **37...Kd8 38.Qg5 Rg7 39.Qf4 Ke8 40.Kg3 Qb7?!** Loses practically at once, but it's difficult to advice a reasonable alternative. **41.Qf5! Rc7** [41...Kd8 42.c5+–] **42.Rh6 Rh7 43.Re6+** [Black resigned because of 43.Re6+ Rhe7 (43...Rce7 44.Qxh7) 44.d6] **1-0**

(08) Fier,A (2566) - Georgiev,VI (2559) [C78]

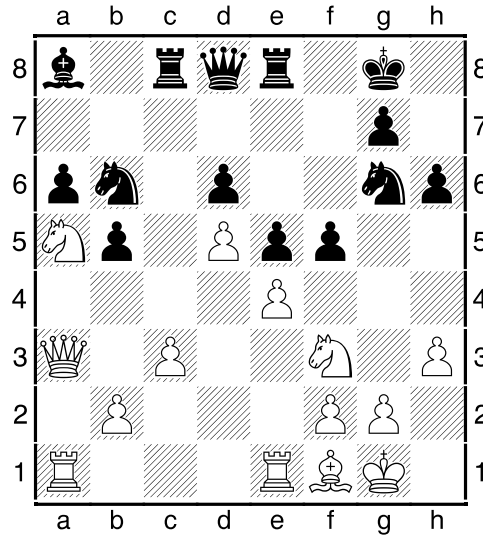
Open NK Dieren NED (9), 28.07.2011

[IM Polivanov,A]

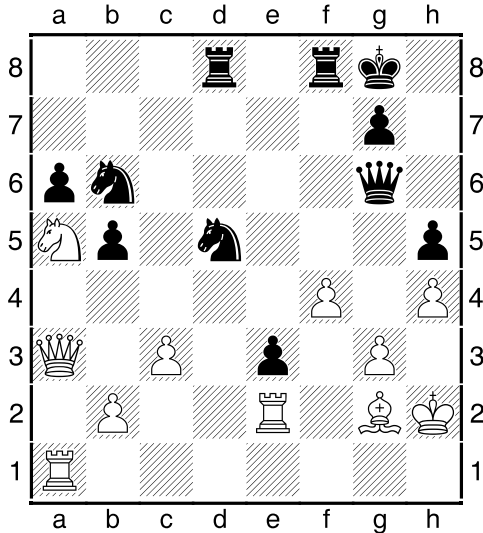
1.e4 e5 2.Nf3 Nc6 3.Bb5 a6 4.Ba4 Nf6 5.0-0 b5 6.Bb3 Bb7 7.Re1 Bc5 8.c3 0-0!? [Usually applied 8...d6 9.d4 Bb6 , but Black is able to take this liberty.] **9.d4 Bb6 10.Be3** [10.dxe5?! isn't good – 10...Ng4] **10...d6** [Black could use this unusual order of moves: 10...exd4 11.cxd4 Na5 , having in mind the line 12.Bg5 Nxb3 13.axb3 h6 14.Bh4 g5 15.Nxg5! Nxe4!q] **11.Nbd2 h6 Ng4** is threatening. **12.h3**



12...Re8 The most logical reply – White is forced to determine in center. [Another, more dynamic continuation – 12...exd4 13.cxd4 Nb4 14.Qb1 c5 15.a3 Nc6, and so on.] **13.d5** [13.Qb1 Nb8! 14.Bc2 Nbd7 15.a4 d5=] **13...Ne7 14.Bxb6 cxb6 15.Bc2** White's plan lies in a2–a4, but at first Fier wants to put own bishop on d3. **15...Ng6 16.Bd3** Otherwise Nf4. **16...Nd7** Going to c5 and preparing f7–f5 breakup simultaneously. **17.Bf1** [17.b4 Rc8 18.Rc1 f5! 19.exf5 Nf4 20.Ne4 Nf6 21.Nxf6+ Qxf6 22.Be4 Qf7=] **17...Rc8 18.a4 bxa4 19.Qxa4!N** [This is stronger than 19.Rxa4 b5 20.Ra3 Rf8 21.Nh2 f5 22.exf5 Ne7 23.c4 Nxf5 24.Ng4, Zontakh–Vujosevic, Nis 1995, and after 24...Nb6! 25.b3 Black would have been a little bit better (♖a3 can't transfer at the kingside).] **19...b5 20.Qa3 Nb6** [20...Nc5? 21.c4±] **21.Nb3** White is planning Na5–c6 strike, and if so, that pawns a6 and b5 will be doomed. So Black has to undertake something. **21...f5!** No time to hesitate – Black blowing a center in order to stir up a bishop b7. **22.Na5 Ba8**



23.exf5?! [Fier wrongly rejects contemplated 23.Nc6 – 23...Bxc6 24.dxc6 fxe4 25.Rxe4 d5 26.Rg4 Re6 27.Qb4 (27.Qxa6? Ra8) 27...Ra8, and White should make a sacrifice 28.Rxg6! Rxg6 29.Nxe5 Re6 30.Qd4 with full compensation.] **23...Nf4 24.Nd2** [Now 24.Nc6 is deprived of such power as before: 24...Qd7 25.Qxa6 Nbx d5 26.Na7 Nc7 27.Qa3 Qxf5! (27...Rb8?! 28.Nh4±) 28.Nxc8 Nxf3+ 29.Kh2 Qh5!, and Black has a draw at least, for example – 30.Qxd6 Ng5+ 31.Kg3 Bxf3 32.Qxc7 Qg4+ 33.Kh2 Qh4+ 34.Kg1 Nh3+! 35.gxh3 Qg5+=] **24...Bxd5 25.Ne4** In view of ♗d6, Georgiev has to part with bishop. **25...Bxe4 26.Rxe4 Qd7!** But Black doesn't mourn it, because there is a new goal – ♗f5. **27.Re3** [27.Ree1 Qxf5 28.Qxd6 Re6 29.Qd2i] **27...Rf8!** [27...Qxf5?! meets 28.Nb7! Nc4 29.Nxd6 – by the way, without ♖e3 here Nxf3+ would have come.] **28.g3 Nfd5 29.Re2 Qxf5!** [29...Rxf5 30.Bg2, and black pieces are somewhat misplaced.] **30.Qxd6** [30.Bg2 Qd3!] **30...e4** Ready for e4–e3 ramming. **31.Bg2 Rcd8?!** [31...Rf6! was more correct: 32.Qa3 e3 33.fxe3 Nxe3, and if 34.Nc6, then 34...Kh7! 35.Ne7?! Qd3 36.Rae1 Nxf2 37.Rxf2 Nc4 38.Qa1 Re8+] **32.Qa3?** [Why not 32.Qc6!, and Black almost forced to make draw: 32...Rf6 (what else?) 33.Qb7 Rf7 34.Qc6=] **32...e3 33.f4** [33.fxe3 Nxe3 34.Nc6 fails again: 34...Qd3 35.Rae1 Nxf2 36.Rxf2 Nc4!-+] **33...Qg6 34.Kh2 h5! 35.h4**



[Variation 35.Nb7 h4! also can't be satisfactory: 36.Nxd8 hxg3+ 37.Kg1 (37.Kh1 Rxd8+) 37...Nxf4 , and if 38.Qa2+ (38.Rxe3 Nc4) , Black wins after 38...Nc4 39.b3 Qh5! 40.Rae1 Nxg2 41.Rxg2 Rf2 42.Re2 Nd2-+] **35...Qg4! 36.Rae1 Nxf4!** Very nice finishing blow – Georgiev uses strength of ♗e3. **37.gxf4 Rd2 38.Qb3+ Kh8** [38...Kh7? 39.c4 Rxe2 40.Qd3+] **39.Nc6 Nc4!?** [There was nothing wrong with 39...Rxe2 40.Rxe2 Qxe2 41.Ne5 Rf6 too.] **40.Nd4 Qxf4+** [40...Qxf4+ 41.Kg1 Qf2+! 42.Rxf2 exf2+ 43.Kf1 fxe1Q+ 44.Kxe1 Rxg2 with quick mate.] **0-1**

(09) Kononenko,Dmitry (2593) - Stefansson,Hannes (2546) [B82]

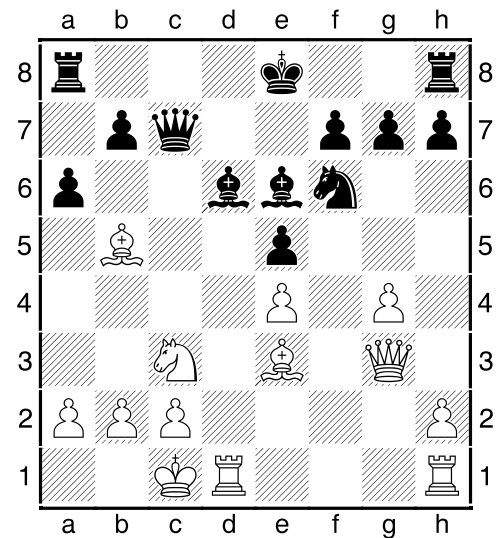
CZECH OPEN 2011 Pardubice (CZE)

(9.1), 30.07.2011

[IM Polivanov,A]

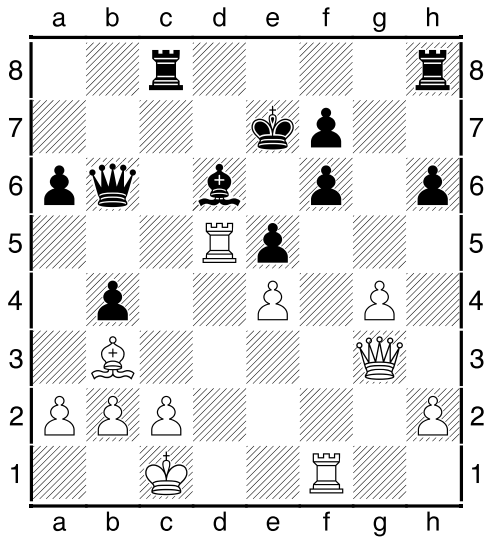
1.e4 c5 2.Nf3 e6 3.d4 cxd4 4.Nxd4 Nc6 5.Nc3 Qc7 6.Be3 Nf6 7.f4 d6 [Line 7...Bb4 8.Ndb5 Qa5 9.e5 has come in fashion recently – usually White obtain here an active position with two bishops.] **8.Qf3** The most aggressive approach – long castle and pawn assault. **8...a6 9.0-0 Be7 10.g4 Nxd4** [After 10...0-0 11.g5 Nd7 12.Rg1 b5 White can attack in many different ways – for example, 13.f5!? Nde5 14.Qf2 Re8 15.Bh3 Bf8 16.Nce2 , So-Bitton, Manila 2008] **11.Bxd4** [The obvious reply, though 11.Rxd4!? is also possible: 11...e5 12.Rc4 Bxg4 13.Qg3 Qd7

14.Nd5! Nxd5 15.exd5 b5 16.Rc6 Bf6 17.fxe5 Bxe5 18.Bf4] **11...e5** Otherwise swap at d4 would be pointless. **12.fxe5 dxe5 13.Qg3 Bd6 14.Be3 Be6** [Taking 14...Bxg4 practically loses because of 15.h3! – 15...Bxd1 16.Qxg7 Rg8 17.Qxf6 Bh5 18.Nb5!+-; maybe, worth to choose 14...0-0 , while there is such opportunity, but 15.Bg5! (only not 15.g5 Nh5 16.Qh4 Nf4) 15...Be7 16.Bxf6 Bxf6 17.g5 Bd8 18.Nd5 Qc6 19.Bd3 guarantees a stable edge – White is going to push pawns "h" and "g", whereas it's hard to see any countergame for Black.] **15.Bb5+!**



15...Ke7?! It's naturally, that Stefansson wanted to connect ♖h8, but king is situated very poor at e7. [15...Nd7 16.Nd5 Bxd5 17.Bxd7+ Qxd7 18.Rxd5+-; perhaps, only 15...Kf8! 16.Ba4 (16.Be2 Rc8) 16...Nxg4 is the only reasonably option – if suffering, than at least with pawn in a pocket.] **16.Ba4 b5N** [In Kinlan–Mestel, London 1978 16...Qa5?! applied, and 17.Bg5! would lead to a winning position (instead of occurrence 17.Kb1?! Rhc8!) , as 17...Rhc8 is late due to 18.Bxf6+ gxf6 19.g5+-; 16...Nxg4 failed as well: 17.Rxd6! Qxd6 (17...Kxd6 18.Rd1+ Ke7 19.Nd5+ Bxd5 20.Qxg4+-) 18.Rd1 Qb4 19.a3 Qa5 20.b4+-] **17.Bb3 Rac8?** [There is nothing else, but 17...b4 18.Nd5+ Nxd5 19.exd5 Bd7 with defendable position.] **18.Bg5!** Now White conducts Nd5 in improved conditions. Besides, point f6 will be easy tar-

get. Black's situation is despairing. **18...b4**
19.Nd5+ Bxd5 20.Rxd5 h6 21.Bxf6+ gxf6
22.Rf1! ♖f6 is very difficult to protect.
22...Qb6



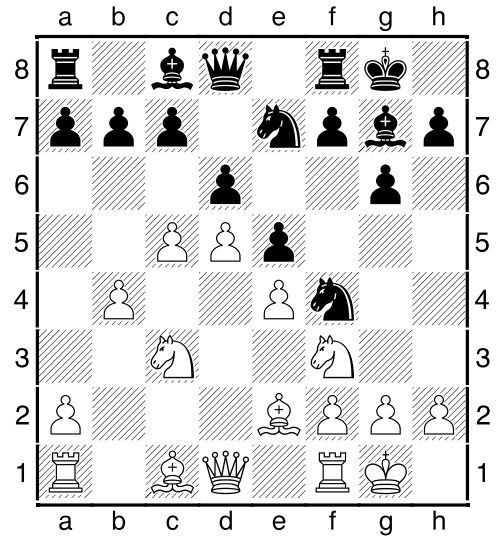
[22...Rhg8 23.Qf3 Rg6 24.h4+-] **23.Qh4!**
 Now black queen is carried away to the
 kingside, whereas white queen will pene-
 trate the opposite flank. **23...Qe3+**
 [23...Bc7 24.Rxf6 Qxf6 25.Rd7+] **24.Kb1**
Qg5 25.Qf2 Rhd8 [25...Rc7 26.Rxd6 Kxd6
 27.Qb6+ Kd7 28.Rd1+ Kc8 29.Bc4!+-]
26.h4 Qg6 27.h5 Qg5 28.Qa7+ Rd7
29.Qxa6 Rcc7 30.Ba4! The most exact
 way to achieve the victory. **30...Ra7**
 [30...Rd8 31.Qb6! Rcc8 32.Rfd1 Qxg4
 33.c3+- (33.Rxd6?! Qxd1+)] **31.Qc6**
Qxg4 32.Rxd6! [32.Rxd6 Rxa4 33.Rd5 ;
 thus Kononenko wins this game and the
 whole event in overall. This game is an ex-
 cellent example of opening preparation im-
 portance in modern chess – Stefansson
 lost almost without a fight...] **1-0**

(10) Kramnik, Vladimir (2781) - Naka-
mura, Hikaru (2770) [E97]

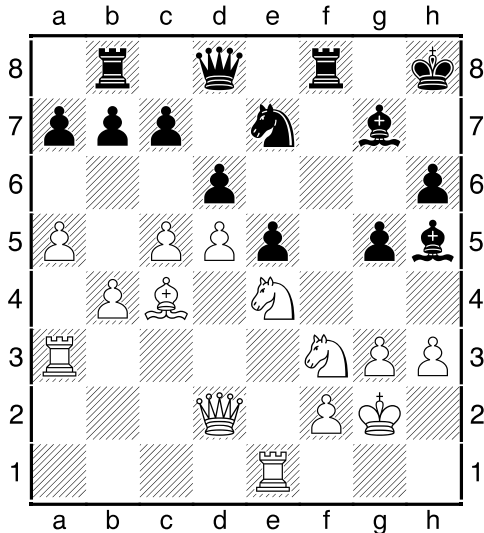
39th GM Dortmund GER (10), 31.07.2011
 [IM Polivanov, A]

This game has a special intrigue. Kramnik
 already secured first place at that moment,
 but victory against Nakamura would have
 allowed to reach 2800+ level again! **1.d4**
Nf6 2.c4 g6 3.Nc3 Bg7 4.e4 d6 5.Nf3 0-0
6.Be2 e5 7.0-0 Nc6 8.d5 Ne7 9.b4 Nh5
 [9...a5 – Iturrizaga–Mamedov, CZM

04/2009; 9...Ne8 – Atalik–Ganguly, CZM
 09/2010.] **10.c5 Nf4**

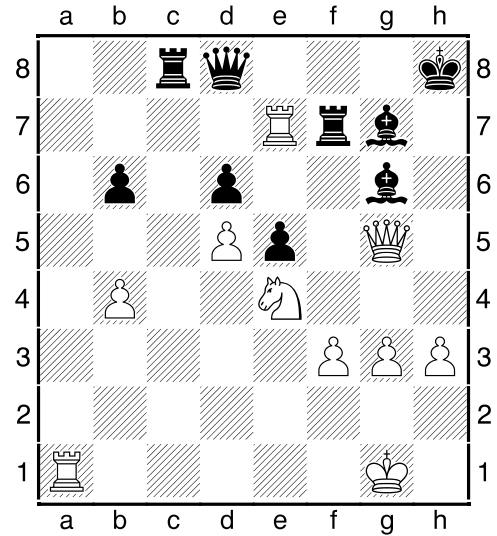


11.a4!? [Quite rare system. Usually ap-
 plied 11.Bxf4 exf4 12.Rc1 with further Nd4;
 or 11.Nd2 f5 12.f3 , keeping the pawn cen-
 ter; or at least 11.Bc4 , though in this game
 it will be the same.] **11...f5** ♖d5 is shaking.
12.Bc4 fxe4 13.Nxe4 h6 14.Re1N Per-
 haps, this is prevention to Bf5 – but Naka-
 mura has different plans for his bishop.
 [Earlier met 14.g3 Nh5 15.Nfd2 Kh8
 16.Ra3 a6 (16...dxc5 17.bxc5 Nxd5 18.Rd3
 c6 19.Nd6) 17.cxd6 cxd6 18.b5 Bf5
 19.bxa6 bxa6 20.Qe2 Qd7 21.Bxa6 Nxd5
 22.Bb5 Qe7 23.Bc6 Ndf4! 24.gxf4 Nxf4
 25.Qe1?! Rac8 and Black won, Bareev–
 Amonatov, Dagomys 2008.] **14...Bg4**
15.Ra3 g5 16.h3 Bh5 17.Bxf4 ♗f4 should
 be destroyed now, otherwise his colleague
 from e7 will help. **17...Rxf4** Of course,
 Black is keeping "f"-line open. **18.g3 Rf8**
19.a5 Kh8 Useful move – now Black is
 able to take dxc5, if there will such need.
20.Kg2 Rb8 21.Qd2

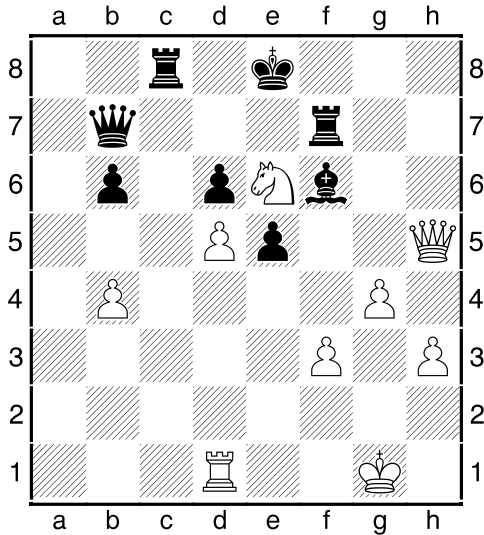


21...b6! Nakamura fights for an initiative. Now 22...bxc5 23.bxc5 dxc5 is threatening, and there is no 24.Nxc5 – Qd6! **22.axb6?!** [Maybe, this swap is not the best decision. It's possible to suggest 22.c6 , and if 22...bxa5 , then 23.b5! with coming Qxa5 and Nfd2.] **22...axb6 23.Nfxg5** [Now 23.c6 is parried by 23...Ra8! , winning file "a", and Black is clearly better. Maybe, that's why Kramnik decides to entangle the situation with ♘'s sacrifice.] **23...hxg5 24.Qxg5** [24.Nxg5 gives nothing: 24...Bf7 25.Rf3 Bg8 26.Re4 Ng6! 27.Rxf8 Qxf8 28.Qe2 Bh6±] **24...Bg6** [Black has to control square h7 in order to avoid 24...Bf7? 25.Qh4+ Kg8 26.Ng5; by the way, Nakamura has an excellent alternative: 24...Rf5 25.Qh4 Bf6!! , and after 26.Nxf6 Ng6 27.Qxh5+ Rxh5 28.Nxh5 Qg5 29.Be2 Qd2 his advantage is tangible.] **25.cxd6 cxd6 26.Ra7 Rc8!?** [Good-looking move (with Rc7 idea), but simple 26...Rf7 seems safer. Now, white rook at e7 will by very undesirable guest.] **27.Rxe7 Rxc4 28.f3** Now ♖e1 wants to be transferred at 7th rank (through square a1 or c1). [Artful 28.Kg1 Rxb4 29.h4 isn't enough: 29...b5! (no need to hurry with 29...Rxe4?! 30.Rxe4 Rf7 31.Rxf7 Qxg5 32.hxg5 Bxf7 33.Rb4) 30.h5 Rxe4 31.Rxe4 Rf7-+] **28...Rc2+?!** [Another controversial choice, because ♗b4 probably could be taken: 28...Rxb4 , and in case of 29.Ra1 (29.Rc1 – the same) 29...Rxe4! comes: 30.fxe4 Bxe4+ 31.Kg1 Bg6 32.Raa7 Qc8!-+] **29.Kg1 Rc8** Black in-

tended to exchange ♖e7. **30.Ra1 Rf7**



[30...Re8? loses in a paradoxical way: 31.Qh4+ Kg8 32.Rxg7+! Kxg7 33.Ra7+ Bf7 34.Qg4+ Kf8 35.Rd7! (35.Rxf7+ Kxf7 36.Ng5+ Kf6 37.Ne4+ is just an equality) 35...Rc1+ 36.Kf2 Qb8 37.Qh4+–] **31.Qxg6?!** [Such feeling, that 31.Raa7 Rxe7 32.Rxe7 allowed to achieve a draw – if 32...Rc1+ 33.Kg2 Rc2+ 34.Kg1 Qa8 , then 35.Qh4+ Bh7 (35...Kg8 36.Rxg7+! Kxg7 37.Qf6+ Kh7 38.Ng5+ Kh6 39.Nf7+)=) 36.Ra7!! Qc8 (36...Qxa7 37.Qd8+ Bg8 38.Qh4+)=) , and now familiar 37.Rxg7=] **31...Qxe7** [31...Rxe7 32.Ng5 Bf8 33.Qf6+ with perpetual.] **32.Ng5?** [I guess, Kramnik with such technique like he has, was able to hold an endgame after 32.Nxd6 Rcf8 (32...Rff8!?) 33.Nxf7+ Qxf7 (♗f3 is under strike now – that's why check 28...Rc2+ was made) 34.Qxf7 Rxf7 35.Kg2 ; 32.Ng5 is road to nowhere.] **32...Kg8 33.Qh7+ Kf8 34.Ne6+ Ke8 35.Qh5 Bf6** Now White is simply without a rook. **36.g4 Qb7 37.Rd1**



37...Qa6! Queen is going to e2. **38.Qg6** [38.g5 Qe2 39.Ra1 Qb2 40.Rf1 Rc2 41.Qg4 Bg7-+] **38...Ke7 39.g5 Bh8 40.Re1 Qa3** Time to gather in the harvest. **41.Nd4 Qxb4** [41...Rc1 wins too, but this way also will do.] **42.Nf5+ Kf8 43.Rd1** [43.Qxd6+ Qxd6 44.Nxd6 Rd8 45.Nxf7 Kxf7 is hopeless.] **43...Rc2 44.Nd4 exd4 45.Qxc2 Qc3** Without queen all ends quickly. **46.Qe4 Qe3+ 47.Qxe3 dxe3 48.Kg2 Bc3 49.Kf1 Rxf3+ 50.Ke2 Rxf3 0-1**

Editorial staff:

IM Anatoliy Polivanov (ELO 2356)
IM Tarlev Konstantin (ELO 2520)
IM Sergey Perun (ELO 2345)

Chief editor Roman Viliavin (ELO 2248)
email: chesszone@ya.ru