

# ChessZone Magazine



## Table of contents: # 07, 2013

Games .....	4
(01) Kovalenko,Igor (2621) - Ponkratov,Pavel (2605) [C00] .....	4
(02) Agdestein,Simen (2567) - Nikolov,Momchil (2538) [A34] .....	5
(03) Aleksandrov,Aleksej (2637) - Bukavshin,Ivan (2517) [D45] .....	6
(04) Ponkratov,Pavel (2605) - Amonatov,Farrukh (2637) [B76].....	7
(05) Nikolov,Momchil (2538) - Firman,Nazar (2526) [E95] .....	9
(06) Hayrapetyan,Hovik (2486) - Khaetsky,Roman (2424) [A87] .....	10
(07) Sochacki,Christophe (2459) - Nisipeanu,Liviu-Dieter (2670) [C18] .....	11
(08) Nisipeanu,Liviu-Dieter (2670) - Mozharov,Mikhail (2495) [B42] .....	13
(09) Kovalev,Andrei (2470) - Oleksienko,Mikhailo (2568) [C63] .....	14
(10) Oleksienko,Mikhailo (2568) - Laznicka,Viktor (2684) [D37] .....	15
Editorial staff: .....	17

**Dear readers!**

**ChessZone Magazine is open for your advertising materials.  
We have various ad packages at affordable rates!**

**We're also interested in cooperation with advertising agencies,  
and could offer great commissions for anyone  
who could bring an advertisers to us.**

**Please contact us for details  
[chesszone@ya.ru](mailto:chesszone@ya.ru)**

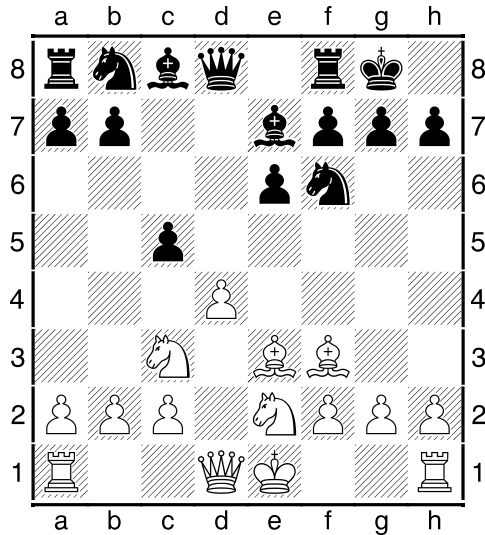
## Games

### (01) Kovalenko, Igor (2621) - Ponkratov, Pavel (2605) [C00]

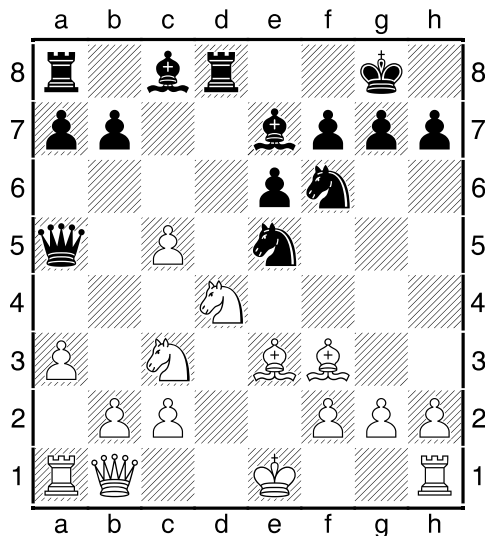
Corporation 'Centre' Cup 'A' udmchess.ru (5), 16.07.2013

[IM Sitnikov, A]

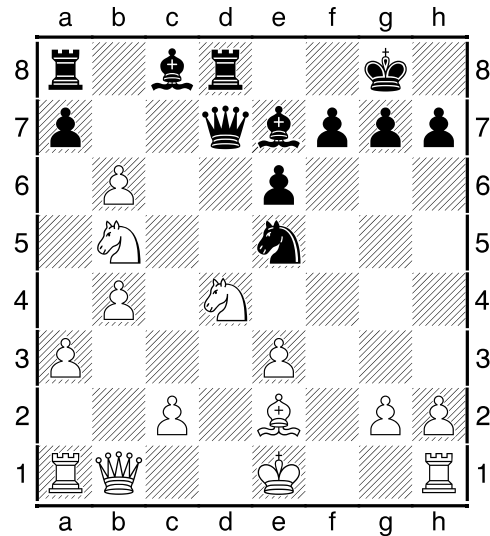
1.e4 e6 2.d4 d5 3.Bd3 d:e4 4.B:e4 Nf6 5.Bf3 c5 6.Ne2 Be7 7.Nbc3 0-0 8.Be3



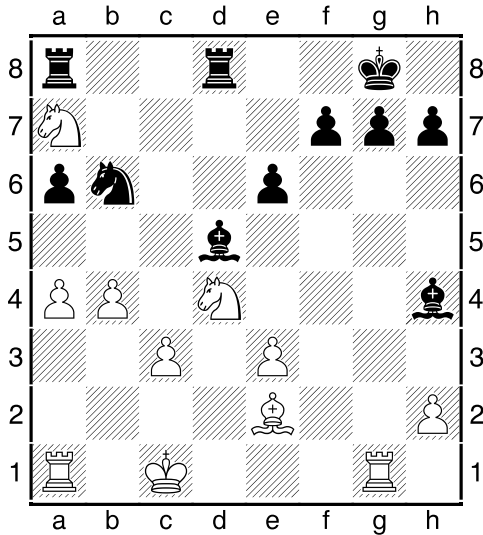
8...Qa5N It seems black seizes the initiative. 9.a3 [After 9.0-0 Nc6 10.Qe1 c:d4 11.N:d4 Ne5 12.Be2 Bd7 white accomplish nothing] 9...Rd8 10.Qb1 Nc6! Pawn sacrifice black build up the pressure. 11.d:c5 Ne5 12.Nd4



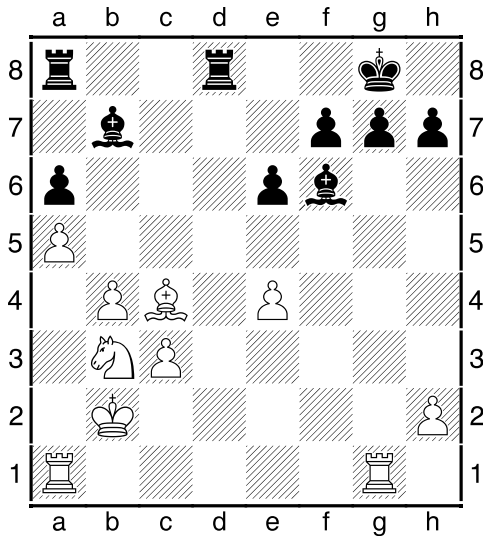
12...Nfg4 [Original retreat of the Queen black could induce a new attenuation: 12...Qc7 13.b4 N:f3+ 14.N:f3 Bd7 15.Qb3 b6 16.c:b6 a:b6 17.0-0 Rac8 with comfortable play] 13.b4 Qc7 14.Ncb5?! [Awakening the strongest piece, white received the opportunity for successfully fight: 14.Qd1 f5 15.B:g4 N:g4 16.Qf3] 14...Qd7 15.Be2 N:e3 16.f:e3 b6 17.c:b6



17...a6! Begins intensive bombing. 18.Na7 Bb7 [After 18...Bh4+ 19.g3 Bg5 20.Qb3 Bb7 21.Rf1 Qd6 22.b5 a:b5 23.Na:b5 Q:b6 24.Kf2 Rac8 25.c4 Ba8 26.a4 Qb7 27.Rg1 Qe4 white caught in a critical situation] 19.a4 Amazing carelessness. [It did not solve all problems 19.0-0 Qd5 20.Nf3 Qe4 21.Qb3 Bg5 22.Kh1 B:e3] 19...Bh4+ [Immediately won 19...Qd5 20.Rg1 Qe4 21.Ra3 R:d4 22.e:d4 Q:d4 23.Kf1 Q:b6+] 20.Kd2 Qd5 21.c3 Q:g2 22.Qf1 Nc4+ 23.Kc1 N:b6 24.Q:g2 B:g2 Transition to the endgame can be regarded as an achievement for white, but it does not rid of all the difficulties. 25.Rg1 Bd5



**26.a5 Nc4 27.e4 Bb7 28.Nac6 B:c6 29.B:c4?!** [Harder keep after 29.N:c6 Rdc8 30.Nd4 Bf2 31.Rd1 Ne3 32.Rd3 Ng2 33.Bf1 Ne1 34.Rd2 Be3 35.Kd1 B:d2 36.K:d2 e5 37.R:e1 e:d4 38.c:d4] **29...Bb7 30.Kb2 Bf6 31.Nb3**



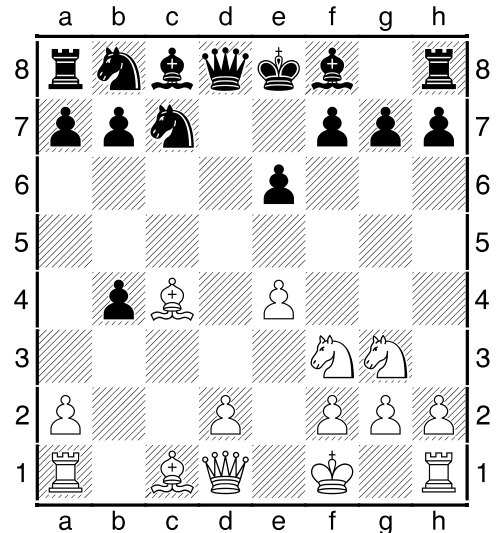
**31...Rdc8** [Not easy to calculate the long variation 31...B:e4 32.Nc5 Rd2+ 33.Ka3 Bd5 34.B:d5 R:d5 35.Rad1 B:c3 36.R:d5 e:d5 37.Rc1 d4 38.Ne4 f5 39.N:c3 d:c3 40.R:c3 Kf7 41.b5 a:b5 42.Kb4 f4 43.K:b5 Kf6 44.a6 g5 45.Kb6 g4 46.a7 f3 47.Kb7 R:a7+ 48.K:a7 Ke5 49.Rc7 Kf4 50.R:h7 f2 51.Rf7+ Ke3 52.Kb6 Ke2 – in pawn endgame white for salvation is not enough one tempo] **32.Nc5 Be7 33.N:b7?!** [Even after the best 33.N:e6 g6 34.Bb3 f:e6 35.B:e6+

**Kg7 36.B:c8 R:c8** passed pawn with the support of bishops is a greater force than 3 white pawns] **33...R:c4 34.Rgd1?!** [34.e5 Rh4 35.Kb3 R:h2 and white unlikely to halt the pawn Armada on kingside] **34...Bf6 35.Nd6 R:c3 36.Rab1 Be5 37.Ka2 h5 38.h4 Rb8 39.Rd2 Rc6 40.Rbd1 0-1**

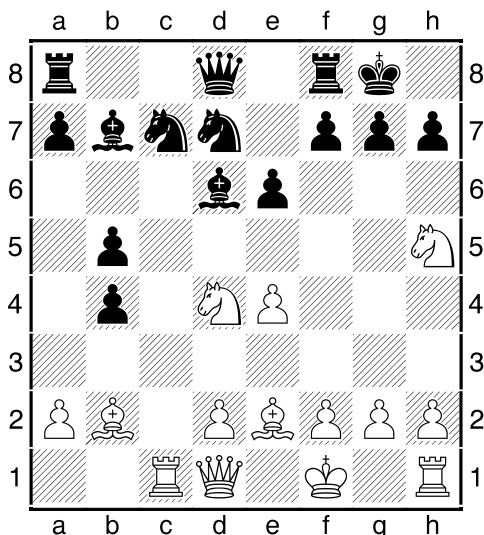
**(02) Agdestein, Simen (2567) - Nikolov, Momchil (2538) [A34]**

XV Obert Internacional Sant Marti Barcelona. Carrer Selva de Ma (4), 16.07.2013 [IM Sitnikov, A]

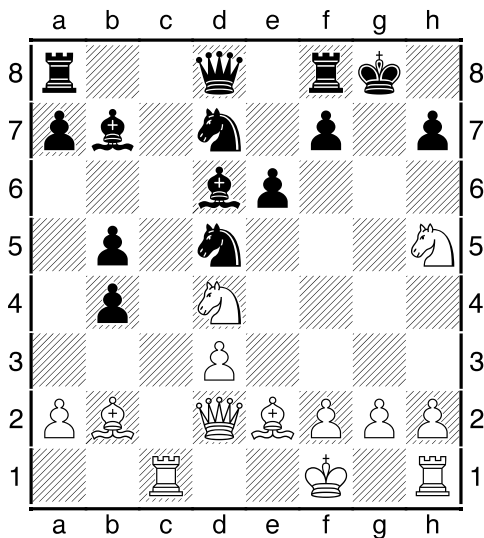
**1.c4 Nf6 2.Nc3 c5 3.Nf3 d5 4.c:d5 N:d5 5.e4 Nb4 6.Bc4 Nd3+ 7.Ke2 Nf4+ 8.Kf1 Ne6 9.b4 c:b4 10.Ne2 Nc7 11.Ng3N** [11.d4 e6 12.h4 with mutual chances] **11...e6**



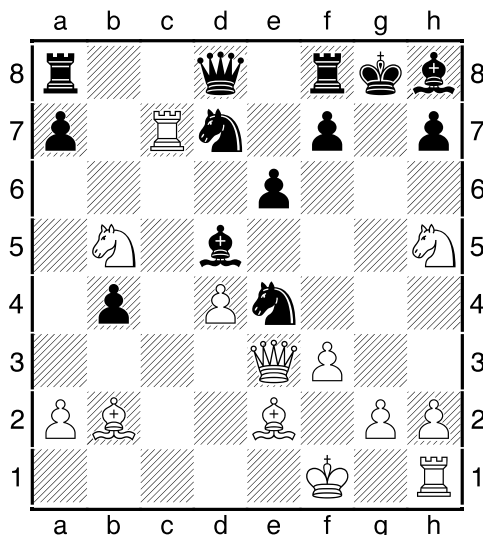
**12.Bb2** That's the idea of white. Without moving a pawn "d", he left free big diagonal, and now bishop is preventing the normal development of the black... **12...b5 13.Be2 Bb7 14.Rc1 Nd7 15.Nd4 Bd6 16.Nh5 0-0**



**17.N:g7 B:e4 18.d3 Bb7** [After 18...Bg6 19.Nc6 Qh4 20.g3 Qg5 21.Bf3 e5 22.h4 Qf6 23.Nh5 Qe6 24.d4 f6 25.d:e5 f:e5 26.Bg4 Qd5 27.Q:d5+ N:d5 28.B:d7 B:h5 29.B:e5 B:e5 30.N:e5 Nc3 the situation can be estimated as approximately equal] **19.Qd2 Nd5 20.Nh5**



**20...Nc3?** [right 20...Qe7 21.Qh6 f6 22.N:e6 Rfc8 23.Bg4 R:c1+ 24.B:c1 Kh8 and white did not have enough forces for a decisive thrust] **21.N:b5 Be5 22.d4 Ne4 23.Qe3 Bh8 24.Rc7 Bd5 25.f3**

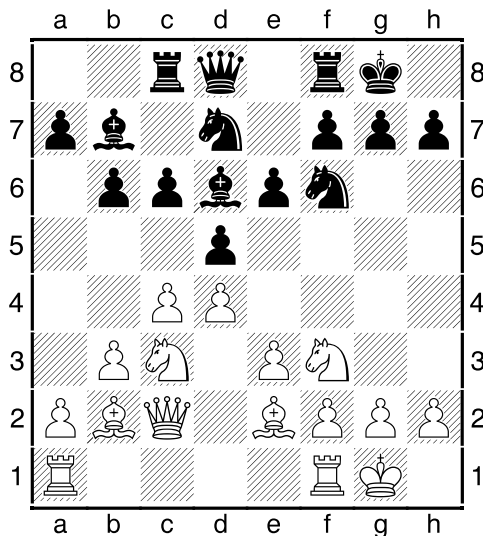


This is the final. A knight cannot retreat, because the black Queen unable to simultaneously control squares g5 and d7. There is only one check... **25...f5 26.f:e4 f:e4+ 27.Ke1 Rf5 28.Qg3+ Rg5 29.R:d7 R:g3 30.R:d8+ R:d8 31.N:g3 Rd7 32.Kd2 a6 33.Rc1 a:b5 34.Rc8+ Kf7 35.R:h8 1-0**

**(03) Aleksandrov,Aleksej (2637) - Bukavshin,Ivan (2517) [D45]**

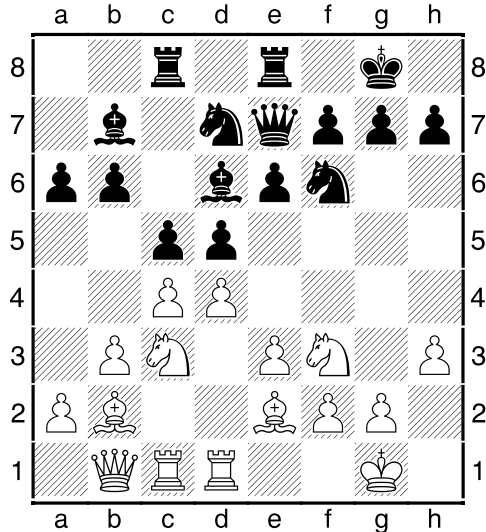
Corporation 'Centre' Cup 'A' udmchess.ru (6), 17.07.2013  
[IM Sitnikov, A]

**1.d4 d5 2.c4 e6 3.Nc3 c6 4.e3 Nf6 5.Nf3 Nbd7 6.Qc2 Bd6 7.b3 0-0 8.Be2 b6 9.0-0 Bb7 10.Bb2 Rc8**

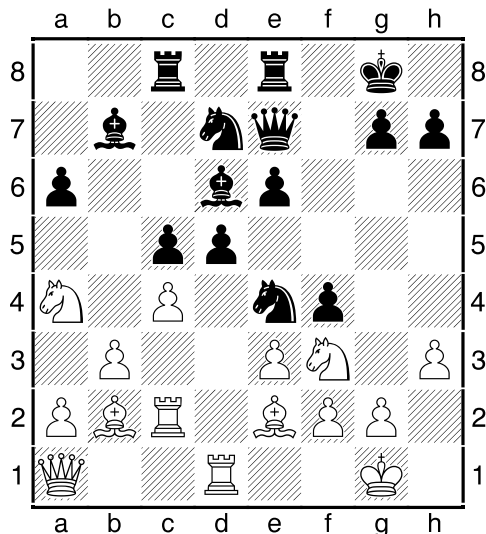


**11.Rfd1** If white seek the struggle, they

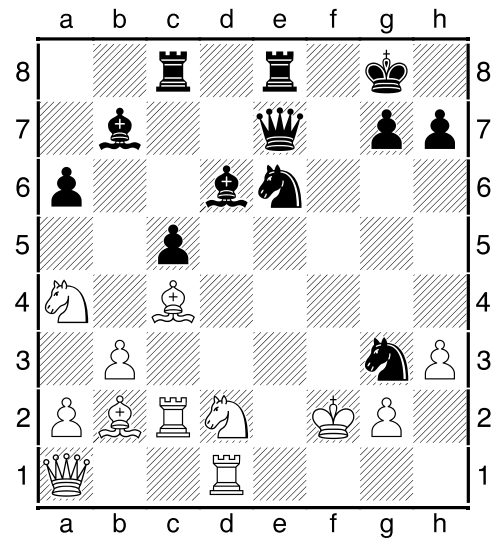
must rush e3–e4 until rival plays c6–c5. The opportunity is available on this and the next few moves... **11...Qe7 12.Rac1 Rfe8 13.Qb1N** Testimony peace strategy. Apart pieces in the centre, white hope to reach a peaceful harbor... **13...a6 14.h3?! c5**



Thus, the center came in close contact. The position of almost symmetric, the difference is only in the position of bishops and Queens. This nearly nuance tips the balance in favor of black. Pair Queen+bishop on e7 and d6 perfectly ready for the upcoming battle. **15.d:c5 b:c5 16.Na4?! White** began standard plan siege hanging pawns, but completely forget about their king. And black bishops already clearly targeted in this way and waiting for the case to pay a visit... **16...Ne4 17.Qa1 f5! 18.Rc2 f4**



**19.c:d5** [After 19.e:f4 d4 black one stroke off from the game immediately 4 enemy pieces: Queen, rook, bishop and knight!] **19...f:e3 20.d:e6 e:f2+** Interesting, even the prudent wish to protect the king of swing h2–h3 eventually gave a negative effect: the outpost g3 now irreparably weakened. **21.Kf1 Nf8** [Easy 21...Ng3+ 22.K:f2 N:e2 23.R:e2 B:f3 24.g:f3 Qh4+ 25.Kg1 R:e6 26.R:e6 Qg3+ 27.Kf1 Q:h3+] **22.Bc4 N:e6 23.Nd2** [23.Nc3 Ng3+ 24.K:f2 B:f3 25.g:f3 Qh4 26.Kg1 Kh8 27.R:d6 Ng5+] **23...Ng3+ 24.K:f2**



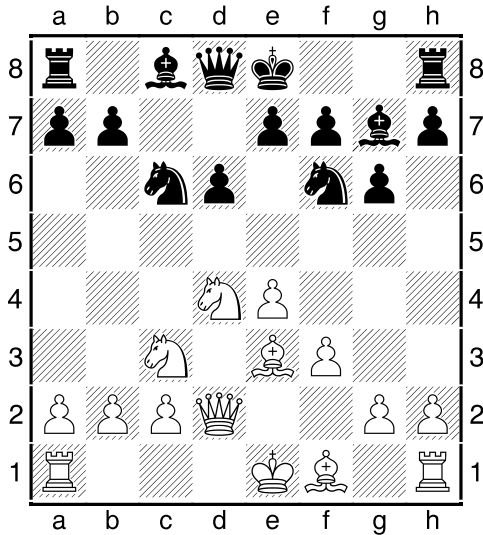
**24...Kh8** The final touch: white defenseless before the burst pressure of the black army. **25.Nf1 Nd4 26.B:d4 c:d4 27.Q:d4 Nf5 28.Qb6 Qe4 29.Re2 Q:g2+ 30.Ke1 Ng3 31.N:g3 B:g3+ 32.Kd2 R:e2+ 33.B:e2 Qd5+ 34.Bd3 Qg5+ 0-1**

**(04) Ponkratov, Pavel (2605) - Amonatov, Farrukh (2637) [B76]**

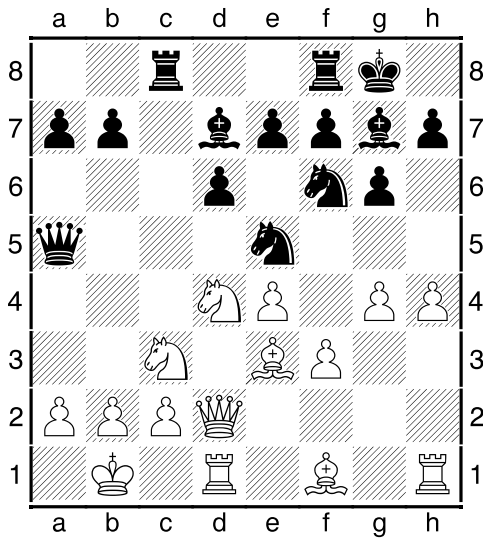
Corporation 'Centre' Cup 'A' udmchess.ru (8), 19.07.2013

[IM Sitnikov, A]

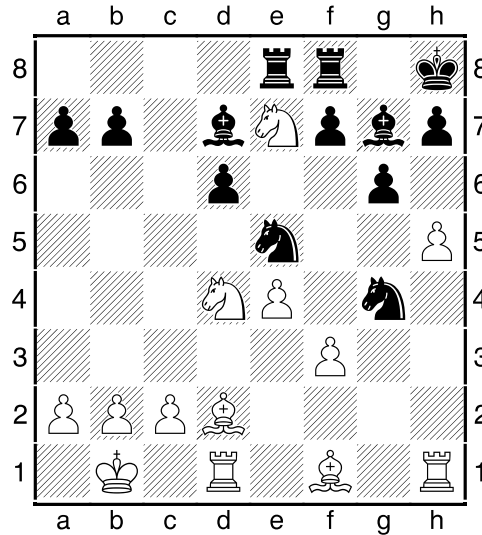
**1.e4 c5 2.Nf3 d6 3.d4 c:d4 4.N:d4 Nf6 5.Nc3 g6 6.Be3 Bg7 7.f3 Nc6 8.Qd2**



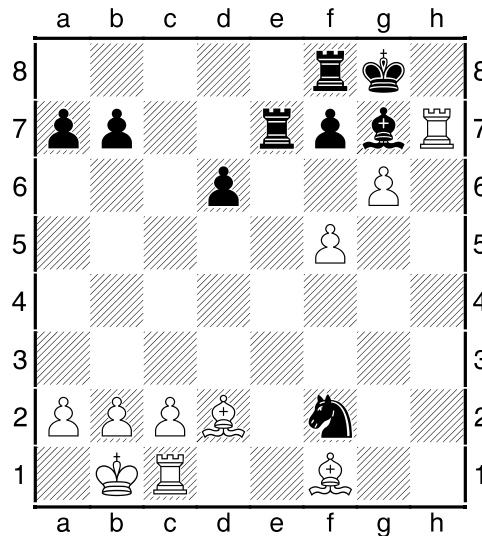
**8...0-0** This variation of the Sicilian defense is not popular. Black put themselves at great risk of being under a crushing attack, many of the lines developed in the home analysis for 20-30 moves. This game also replenish the treasury. **9.0-0 Bd7 10.h4 Rc8 11.g4 Ne5 12.Kb1 Qa5?!**



And now, take the black bull by the horns... **13.Nd5 Q:d2 14.N:e7+ Kh8 15.B:d2 Rce8 16.h5 Nf:g4**

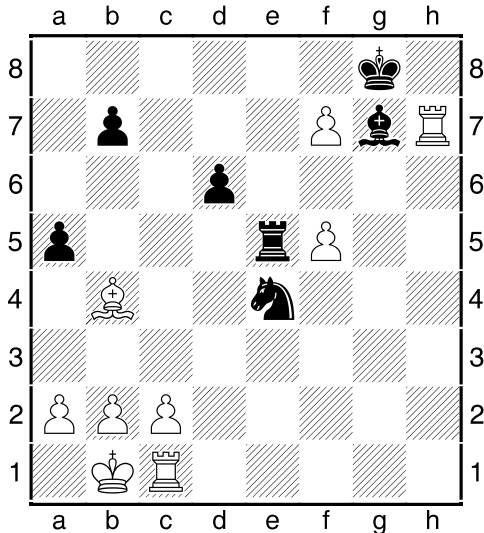


**17.f:g4!N** It is strange that taking piece has not previously encountered. Further, the game continues to forcibly... **17...N:g4 18.h:g6 R:e7 19.Nf5 B:f5 20.R:h7+ Kg8 21.e:f5 Nf2 22.Rc1**



**22...Ne4?!** [In case of the best **22...f:g6 23.f:g6 Rf5 24.Bh6 Rc5 25.c3** white must win the endgame by remote passed pawn] **23.Bb4 Re5 24.Bc4 a5** [24...R:f5 25.Rh4 d5 26.B:f8 K:f8 27.Bd3 f:g6 28.B:e4 d:e4 29.R:e4+-] **25.B:f7+ R:f7 26.g:f7+**



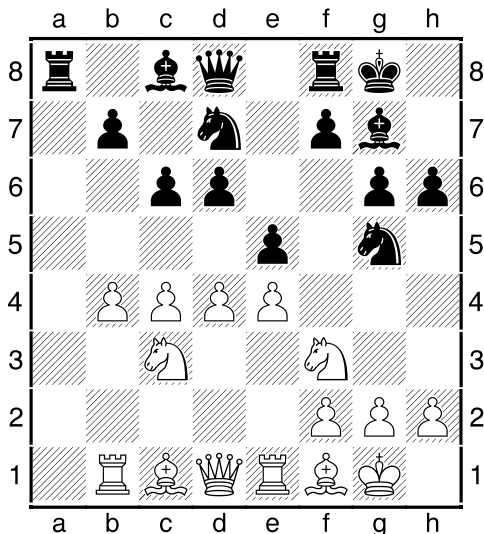


Suddenly rook is inviolable – sassy pawn has done its job... 26...Kf8 27.Rg1 a:b4 28.Rh:g7 Nd2+ 29.Kc1 Nf3 30.Rg8+ K:f7 31.R1g7+ Kf6 32.b3 Re1+ 33.Kb2 Nd2 34.Rg1 1-0

**(05) Nikolov, Momchil (2538) - Firman, Nazar (2526) [E95]**

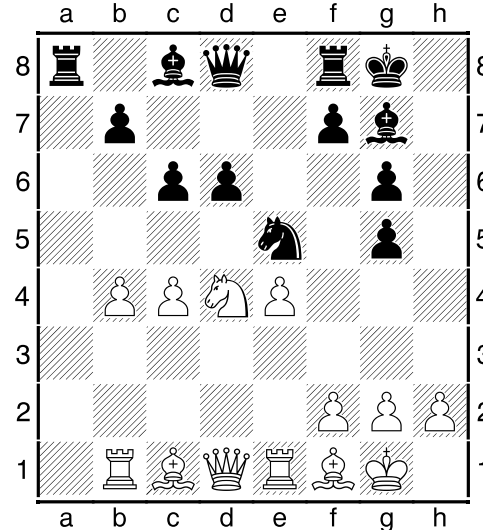
XV Obert Internacional Sant Marti Barcelona. Carrer Selva de Ma (7), 19.07.2013 [IM Sitnikov, A]

1.d4 Nf6 2.c4 d6 3.Nc3 e5 4.Nf3 Nbd7 5.e4 g6 6.Be2 Bg7 7.0-0 0-0 8.Re1 c6 9.Bf1 h6 10.Rb1 a5 11.a3 Nh7 12.b4 a:b4 13.a:b4 Ng5N

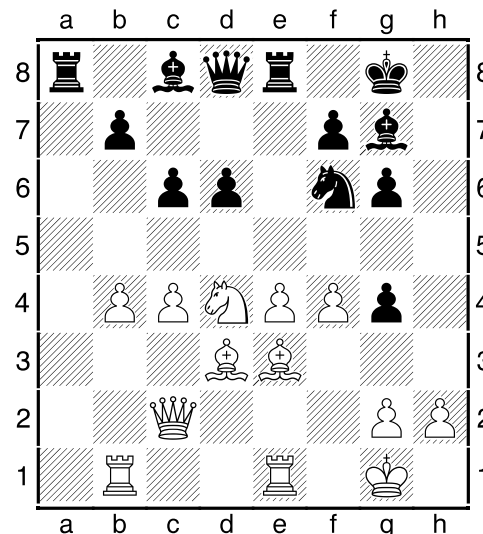


[13...f5 14.e:f5 g:f5 15.d:e5 d:e5 16.Ne2 e4 17.Nfd4 Ne5 18.Nf4 Ng4 19.Be3 with un-

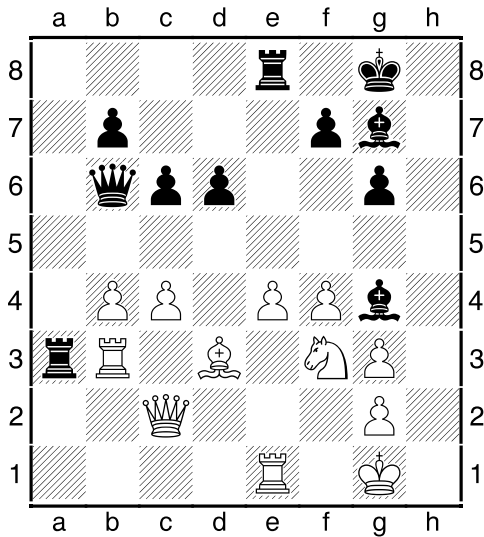
clear play / Andersson, U (2635) – Mestel, J (2500) / Phillips&Drew 1982] 14.N:g5?! Obviously, the strategy of black focuses on the struggle for the central points and the release of large diagonal for bishop. Therefore it was better to prevent this plan by d4–d5 , especially pawn structure on queenside favourable for white... 14...e:d4 15.Ne2 h:g5 16.N:d4 Ne5



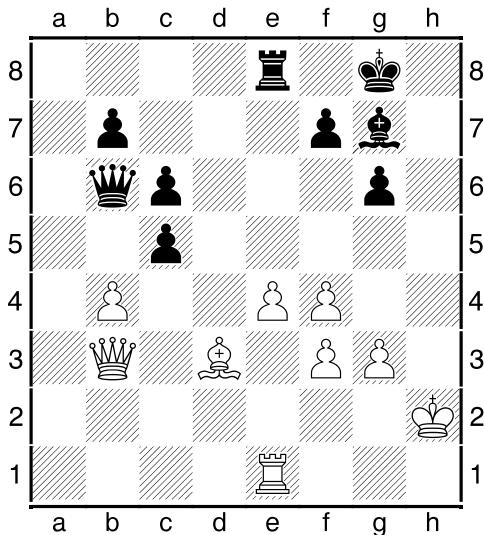
Black obtained convenient curly play, an important role for this is played by the pawn "g", ready to shake the central white buildings. By the way, this move could be immediately fix structure by g5–g4 , but in the game also not bad. 17.f3 Re8 18.Be3 g4 19.f4 Nd7 And now central pawn is attacked. 20.Bd3 Nf6 21.Qc2



**21...g3 22.h:g3 Ng4** So practically forced white denied an important bishop. **23.Nf3 N:e3 24.R:e3 Bg4 25.Ree1 Ra3 26.Rb3 Qb6+**

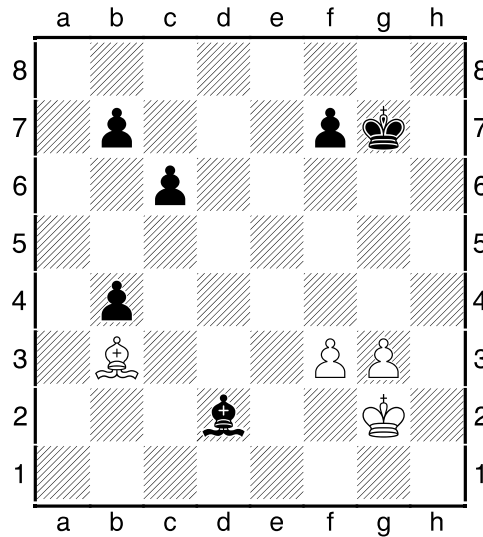


**27.Kh2?** [Sure, after 27.Kf1 Rea8 the initiative on the black side, but because of limited material white have a chance to hold position] **27...R:b3 28.Q:b3 B:f3 29.c5 d:c5 30.g:f3**



**30...c:b4?** [A simple poke 30...c4 31.B:c4 Qf2+ 32.Kh3 Q:e1 33.B:f7+ Kh7 black immediately won, because the white't have time to capture rook because of the threat of checkmate in 2 moves] **31.Re2 Bc3 32.e5 Kg7 33.e6 Qd4!** Timely move Queen to the protection of the Royal resi-

dence **34.Bb1 Qf6 35.Ba2 g5 36.Kg2 g:f4 37.Re4 R:e6 38.R:f4 Qe7 39.Qa4 Rf6 40.Rg4+ Rg6 41.R:g6+ K:g6 42.Qc2+ Kg7 43.Bb1 Qe6 44.Ba2 Qe3 45.Bb3 Qd2+ 46.Q:d2 B:d2**



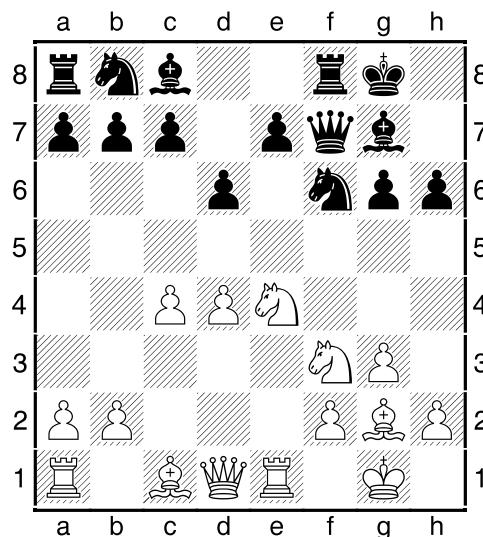
Three pawns on queenside not leave white chance for blockade. **47.Bc2 Kf6 48.Kf2 Ke5 49.Ke2 Bc1 50.Kd3 b5 51.Bb3 f6 52.Bf7 Kd6 53.Be8 Kc5 54.Kc2 Be3 55.Kb3 Bf2 56.g4 Bg3 57.Bd7 Bd6 58.Be8 Kb6 59.f4 c5 0-1**

**(06) Hayrapetyan,Hovik (2486) - Khaetsky,Roman (2424) [A87]**

XV Obert Internacional Sant Marti Barcelona. Carrer Selva de Ma (8), 20.07.2013

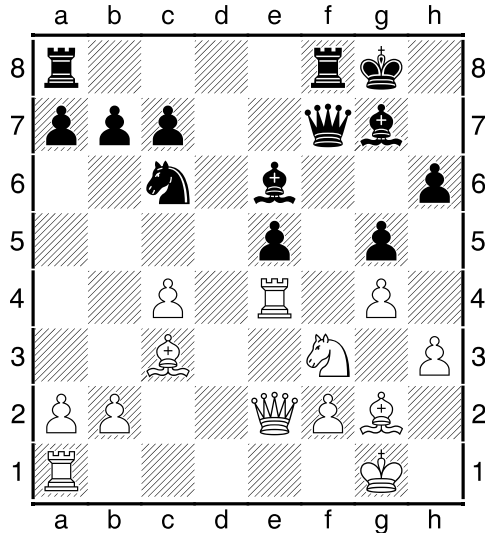
[IM Sitnikov, A]

**1.d4 f5 2.Nf3 Nf6 3.g3 g6 4.Bg2 Bg7 5.0-0 0-0 6.c4 d6 7.Nc3 Qe8 8.Re1 Qf7 9.e4 f:e4 10.N:e4 h6**

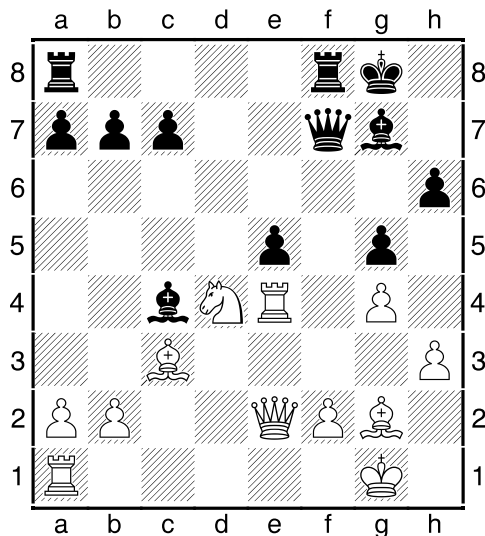


**11.h3N** Interesting idea – pawn wedge to

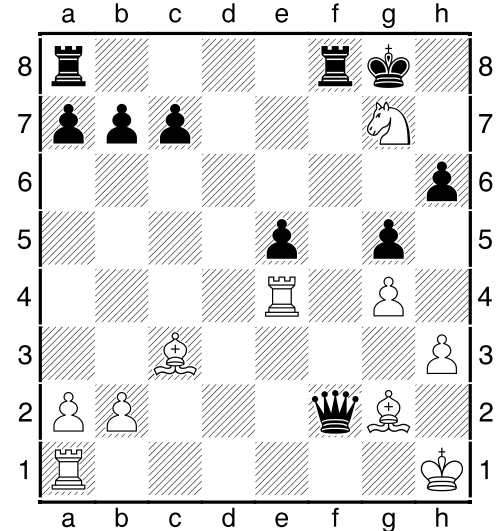
limit the scope of the enemy bishop. Also very good looks N3 to prevent the exchange of the knights. Own piece prevents black develop pressure on the open line. In the future, white can prepare capture out-post by d4-d5, Nd4-e6 and get excellent perspective... **11...g5 12.g4 N:e4 13.R:e4 Nc6 14.Qe2 e5?! 15.d:e5 d:e5 16.Bd2 Be6 17.Bc3**



What to do with central pawn? Black carry out its basic concept, but he meets a tactical refutation, even in several ways... **17...Nd4 18.N:d4!?** [It was enough 18.B:d4 B:c4 19.N:e5! B:e5 20.Qc2 B:d4 21.R:d4 Be6 22.B:b7 and extra pawn must ultimately play its role] **18...B:c4**



**19.Q:c4!** This black obviously not expected. Now the king has nervous... **19...Q:c4 20.Nf5 Qc5 21.N:g7 Q:f2+ 22.Kh1**



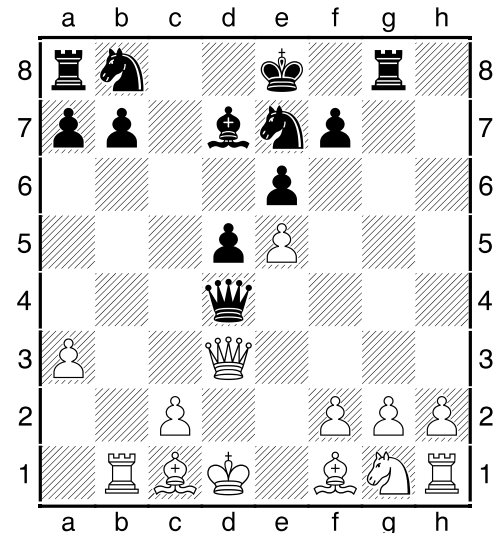
**22...c6?** [The piece could take, although after 22...K:g7 23.R:e5 Kg8 24.Bd5+ Rf7 25.Rf5 Qg3 26.B:f7+ Kh7 27.Bh5 Q:h3+ 28.Kg1 Qg3+ 29.Kf1 Rd8 30.Rf2 Qh3+ 31.Kg1 Qg3+ 32.Rg2 Qe3+ 33.Kh2 Qf4+ 34.Kh1 checks end, and well-coordinated white army still dominates] **23.Nf5** [Easily won also 23.R:e5+- ] **23...Rfe8 24.Rf1 1-0**

**(07) Sochacki, Christophe (2459) - Nisipeanu, Liviu-Dieter (2670) [C18]**

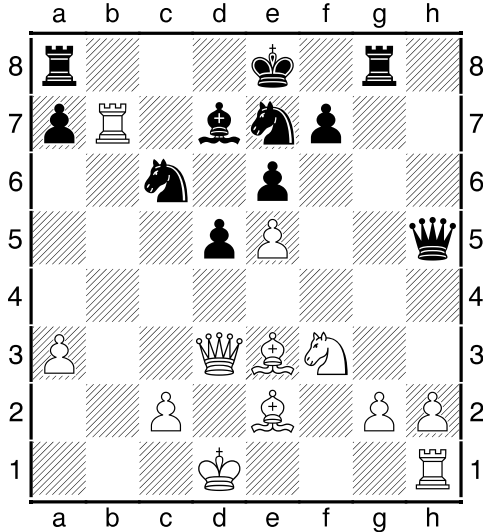
Czech Open A (4), 22.07.2013

[IM Sitnikov, A]

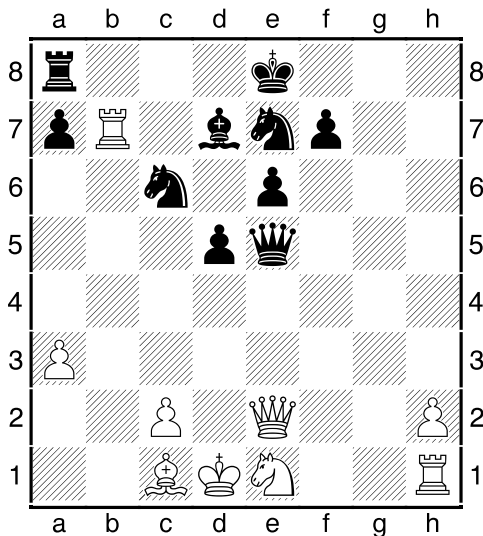
**1.e4 e6 2.d4 d5 3.Nc3 Bb4 4.e5 c5 5.a3 B:c3+ 6.b:c3 Ne7 7.Qg4 c:d4 8.c:d4 Qc7 9.Kd1 Bd7 10.Q:g7 Rg8 11.Q:h7 Qc3 12.Rb1 Q:d4+ 13.Qd3**



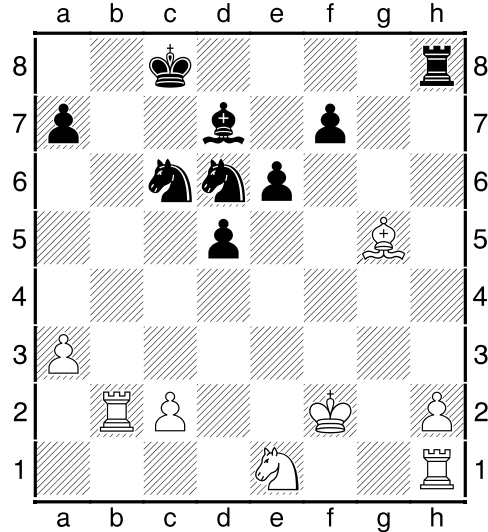
**13...Q:f2N** Previously used Q:e5, but black, not without reason, decided to separate white pawns, hoping in the future to take a tidbit on e5. The fate of the game will be determined by coordination of the pieces. **14.R:b7 Nbc6 15.Be3 Qh4 16.Nf3 Qh5 17.Be2**



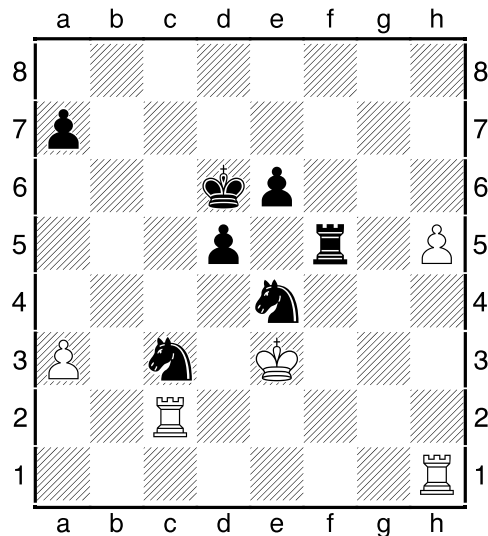
**17...R:g2!** [In the case of rectilinear 17...N:e5 18.N:e5 Q:e5 19.Qd4 Q:d4+ 20.B:d4 Nc6 21.Bf6 R:g2 22.h4 passed "h" could deliver black a lot of trouble] **18.Ne1 R:e2 19.Q:e2 Q:e5** Sacrifice has allowed to eliminate one of the defenders of the white king, and if pawn center begins to move, increased energy of black pieces quickly bring results. Therefore, the white urgently need to change the Queens. **20.Bc1**



**20...Q:e2+** Could refrain from exchange, but the black unwilling to cede central bridgehead. Even in the endgame black able to put forces into battle. **21.K:e2 0-0-0 22.Rb2 Rh8 23.Bg5 Nf5** Almost every move poses a threat, and white didn't have time to move passed pawn. And other resources available are not observed. **24.Kf2 Nd6**



**25.Nf3?** [Even after the best 25.h4 f6 26.Bc1 Ne5 naked-eye visible impact power of the black army] **25...Ne4+ 26.Ke3 Rh3** Animals get lost in the woods and easy prey for a pack of wolves. **27.Kf4 f6 28.B:f6 N:f6 29.Ne5 Rh5 30.N:d7 K:d7 31.h4 Kd6 32.c3 Rf5+ 33.Kg3 Ne5 34.Kg2 Nd3 35.Rd2 Nf4+ 36.Kf3 Ne4 37.Rc2 Ne2+ 38.Ke3 N2:c3 39.h5**



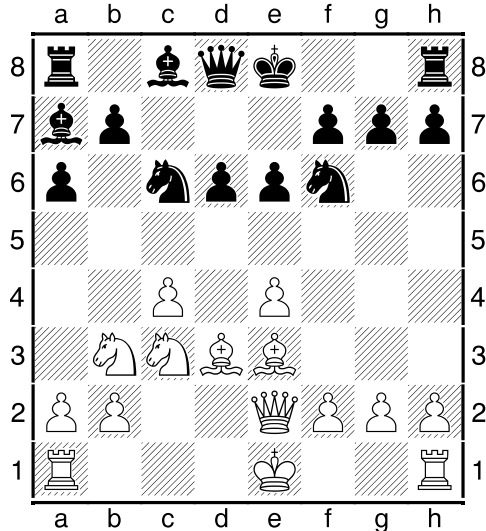
39...Kc5 Passed "d" unstoppable. 0-1

(08) Nisipeanu, Liviu-Dieter (2670) -  
Mozharov, Mikhail (2495) [B42]

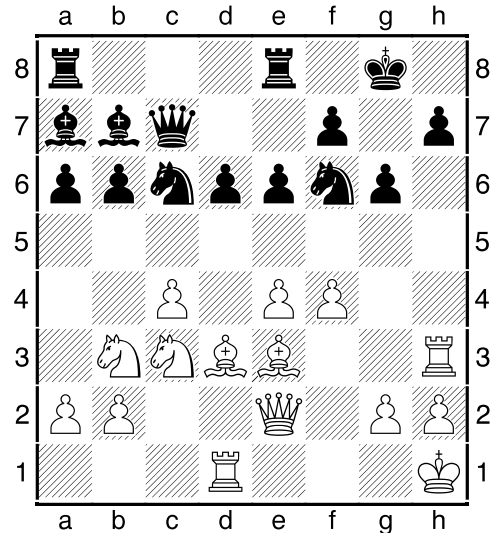
Czech Open A (5), 23.07.2013

[IM Sitnikov, A]

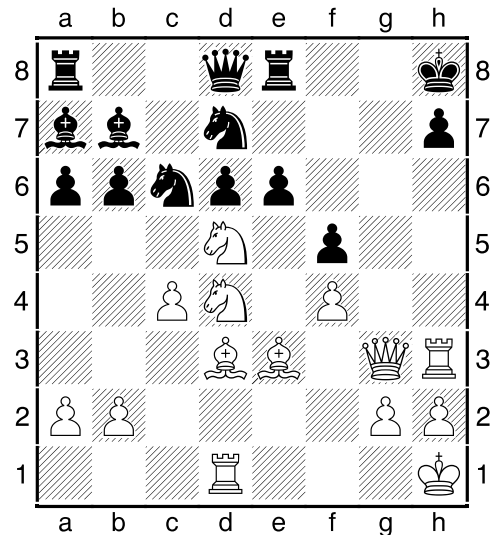
1.e4 c5 2.Nf3 e6 3.d4 c:d4 4.N:d4 a6  
5.Bd3 Bc5 6.Nb3 Ba7 7.c4 d6 8.Nc3 Nc6  
9.Qe2 Nf6 10.Be3



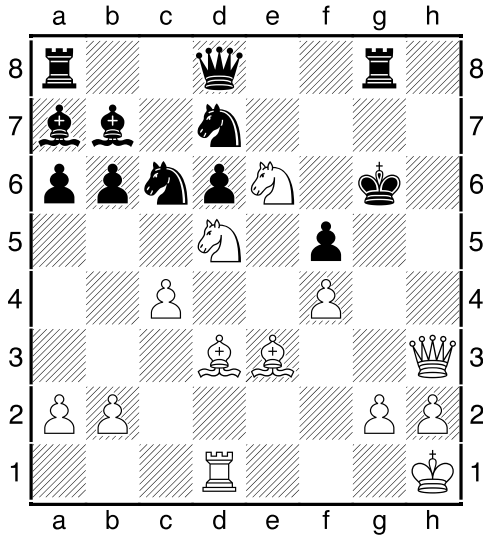
10...b6?! Extravagant novelty. In this variant of the idea b7-b6 applies only after exchanging dark-squared bishops, to prevent the move ♖-c5 and fix a failed pawn structure of white restricting his pieces. [In addition, black can do without b7-b6, for example 10...B:e3 11.Q:e3 0-0 12.0-0 e5 13.Rfd1 Be6 14.Be2 Rc8 15.Rac1 Na5 16.N:a5 Q:a5 17.R:d6 B:c4=] 11.f4 Bb7 Here whites could afford even long castling, but grandmaster prefer not to follow well-known plan. 12.0-0 0-0 13.Rad1 Qc7 14.Kh1 Rfe8 15.Rf3 g6 16.Rh3



16...Nd7?! The only possibility for maneuver is bridgehead c5. But very much alone remains black king. It might be better h7-h5, putting a barrier in front of the white rook. 17.Qf2 f5 Actually, for the sake of this black retreated knight. However, it turns out that the white army was better prepared for the hand-to-hand. 18.e:f5 g:f5 19.Qg3+ Kh8 20.Nd5! Qd8 [Led to the defeat 20...e:d5 21.R:h7+ K:h7 22.B:f5+ Kh8 23.Qh4+ Kg7 24.Qh7+ Kf8 25.Bg6+-] 21.Nd4



Synchronous jumps of white cavalry break the chain e6-f5 and bring victory... 21...Rg8 22.R:h7+ K:h7 23.Qh3+ Kg6 24.N:e6



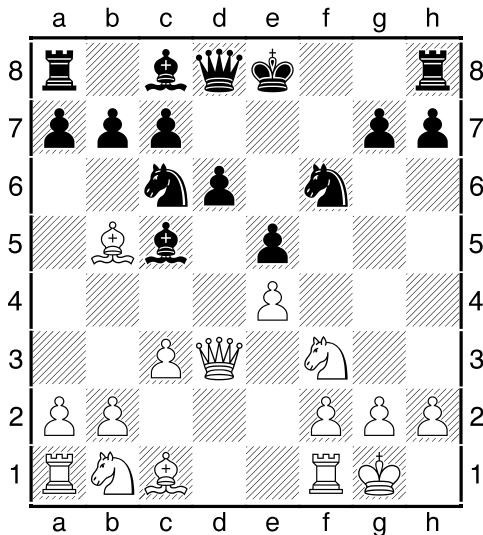
1-0

**(09) Kovalev, Andrei (2470) - Oleksienko, Mikhailo (2568) [C63]**

Czech Open A (6), 24.07.2013

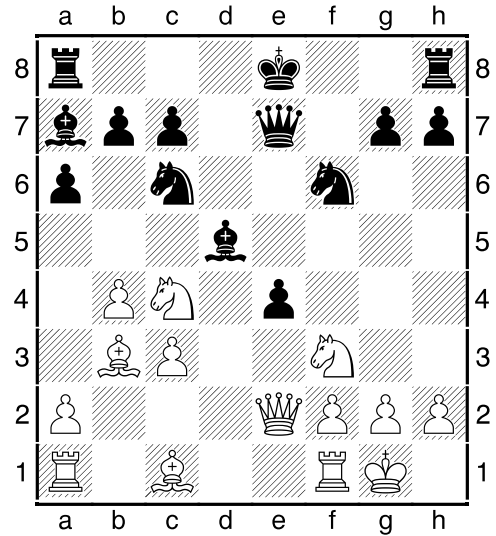
[IM Sitnikov, A]

1.e4 e5 2.Nf3 Nc6 3.Bb5 f5 4.d3 f:e4 5.d:e4 Nf6 6.Qd3 Bb4+ To close the white knight route c3-d5 or to compel the exchange of the bishops. 7.c3 Bc5 8.0-0 d6

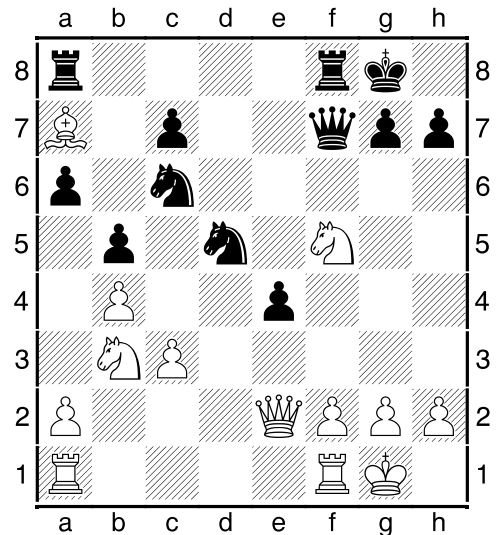


9.Nbd2N [Interesting looks 9.b4 Bb6 10.Bc4 Qe7 11.Nbd2 Be6 12.B:e6 Q:e6 13.Nc4 Qg4 14.Re1 0-0 15.a4 d5 16.h3 Qh5 17.Ncd2 and white nicer] 9...a6 10.Ba4 Qe7 11.b4 Ba7 Now bishop is securely, and white can't win tempo jumping knight. 12.Bb3 Be6 13.Nc4 d5 14.e:d5 e4

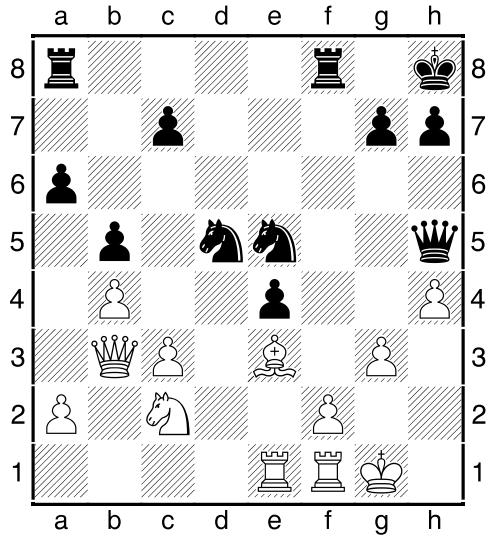
**15.Qe2 B:d5**



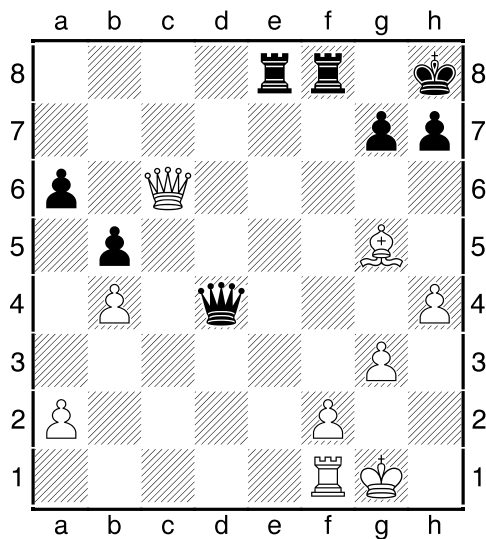
Black successfully decided debut tasks and fight for the initiative. 16.Nh4 0-0 17.Nf5 Qf7 18.Be3 It was better Bg5, depriving support black bishop and isolated pawn. The response pressure on the item f2 gave sides approximately equal chances... 18...b5 19.Nd2 B:b3 20.N:b3 Nd5 21.B:a7



21...Q:f5! So practically forced black master key outposts in the centre, and at the same time can scare the enemy king. 22.Be3 Ne5 23.Nd4 Qg6 24.Qc2 Ng4 25.Qb3 Qd6 26.g3 Kh8 27.Nc2 Qe5 28.Rae1 Qh5 29.h4 Ne5



Skillful maneuvers are caused by the weakening of several white fields. Such sensation, that the black grouping headed by a Queen, a couple of knights and pawns b5, e4 – do more work than all of the hostile army. **30.Nd4 c6 31.Bg5 Qg4 32.Qc2 Nd3 33.Qe2** [White't avoid losses, for example 33.Rd1 h6 34.Bc1 a5! 35.a3 a:b4 36.a:b4 Qh3 37.R:d3 e:d3 38.Q:d3 Nf6 39.Qf3 Ng4 40.Qg2 Q:g2+ 41.K:g2 Ra2 breakthrough of the rook on the second front gives victory] **33...Qd7 34.Q:e4 N:e1 35.Q:e1 Rae8 36.Qc1 N:b4 37.c:b4 Q:d4 38.Q:c6**



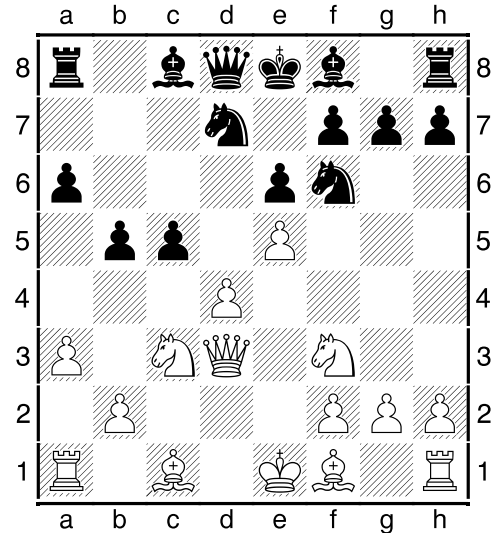
**38...Re1** Tactics in the service of the strategy. Black technically implement advantage. **39.Bf4 R:f1+ 40.K:f1 Qa1+**

**41.Kg2 Q:a2 42.Be3 Rd8 43.Kh2 h6 44.Qb6 Qd5 45.Qa7 Qe4 0-1**

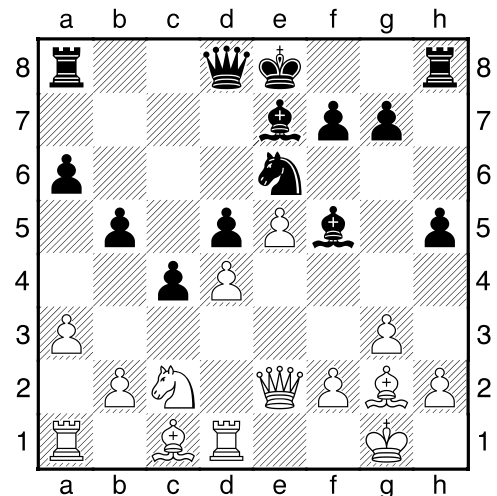
**(10) Oleksienko, Mikhailo (2568) - Laznicka, Viktor (2684) [D37]**

Czech Open A (9), 27.07.2013  
[IM Sitnikov, A]

**1.d4 Nf6 2.c4 e6 3.Nf3 d5 4.Nc3 d:c4 5.Qa4+ c6 6.Q:c4 b5 7.Qd3 Nbd7 8.a3 a6 9.e4 c5 10.e5**

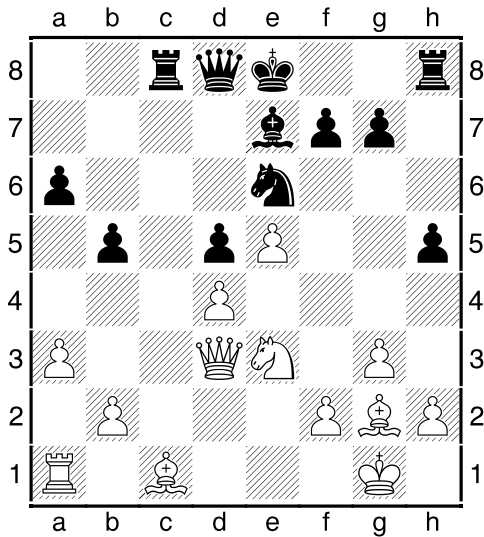


**10...c4N** [In case of 10...c:d4 11.Q:d4 Bc5 12.Qf4 Nd5 13.N:d5 e:d5 14.Qg3 black has difficulties because of the impossibility of castling] **11.Qe2 Nd5 12.N:d5 e:d5 13.g3 Be7 14.Bg2 Nf8 15.0-0 Bf5 16.Rd1 Ne6 17.Ne1 h5 18.Nc2**

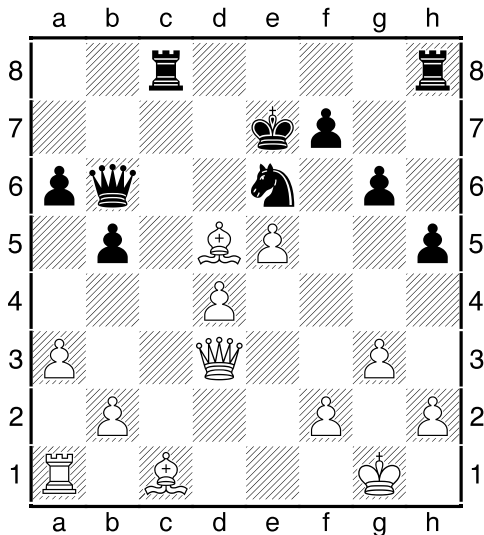


**18...Rc8?!** [No matter how hard to part

with the bishop, but for the sake of security pawn d5 to do this: 18...B:c2 19.Q:c2 h4 with quite viable position] **19.Ne3 Bd3 20.R:d3! c:d3 21.Q:d3**

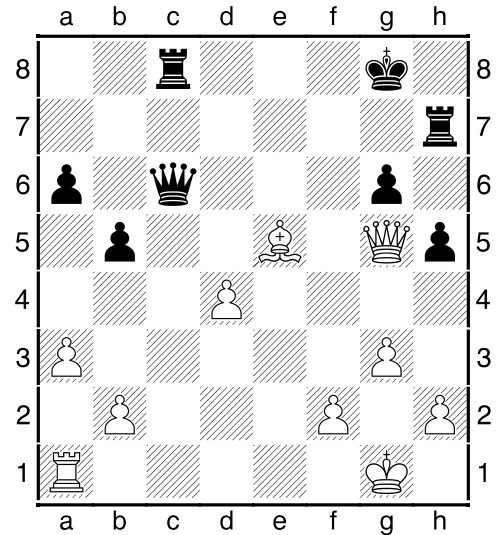


Blacks do not have ways for invasion, central pawn weak – so goes entirely to the protection... **21...Qb6 22.Nf5 g6** [Could not lose a second pawn by 22...Rd8 but here white has a wonderful play, combining threats in the center with the opening the second front a2–a4] **23.N:e7 K:e7 24.B:d5**



**24...Rhd8** [After 24...Q:d4 25.Bg5+ Kf8

26.Q:d4 N:d4 27.Bf6 Rh6 28.Bb7 white when the material superiority controls the whole board] **25.B:e6 K:e6 26.Qf3 f5 27.e:f6 Qc6 28.Qe2+ K:f6 29.Bf4 Kf7 30.Be5 Kg8 31.Qe3 Rd7 32.Qh6 Rh7 33.Qg5**



**33...Rd7** Queen – highly mobile piece, and it must be used. By Qe4 black could tighter hold the line. **34.Re1 Kh7** Again, advise Qe6, covering the gaps in the camp. But black has lost the thread of the game. **35.Bf4 Kg8?** After two inaccuracies – rough blunder. **36.Rc1 1-0**



***Editorial staff:***

**IM Anton Sitnikov** (ELO 2497)

**IM Timofey Iljin** (ELO 2507)

**IM Anatoliy Polivanov** (ELO 2356)

**IM Tarlev Konstantin** (ELO 2520)

**IM Sergey Perun** (ELO 2345)

**Dmitry Posokhov** (ELO 2294)

Chief editor **Roman Viliavin** (ELO 2248)

email: [chesszone@ya.ru](mailto:chesszone@ya.ru)