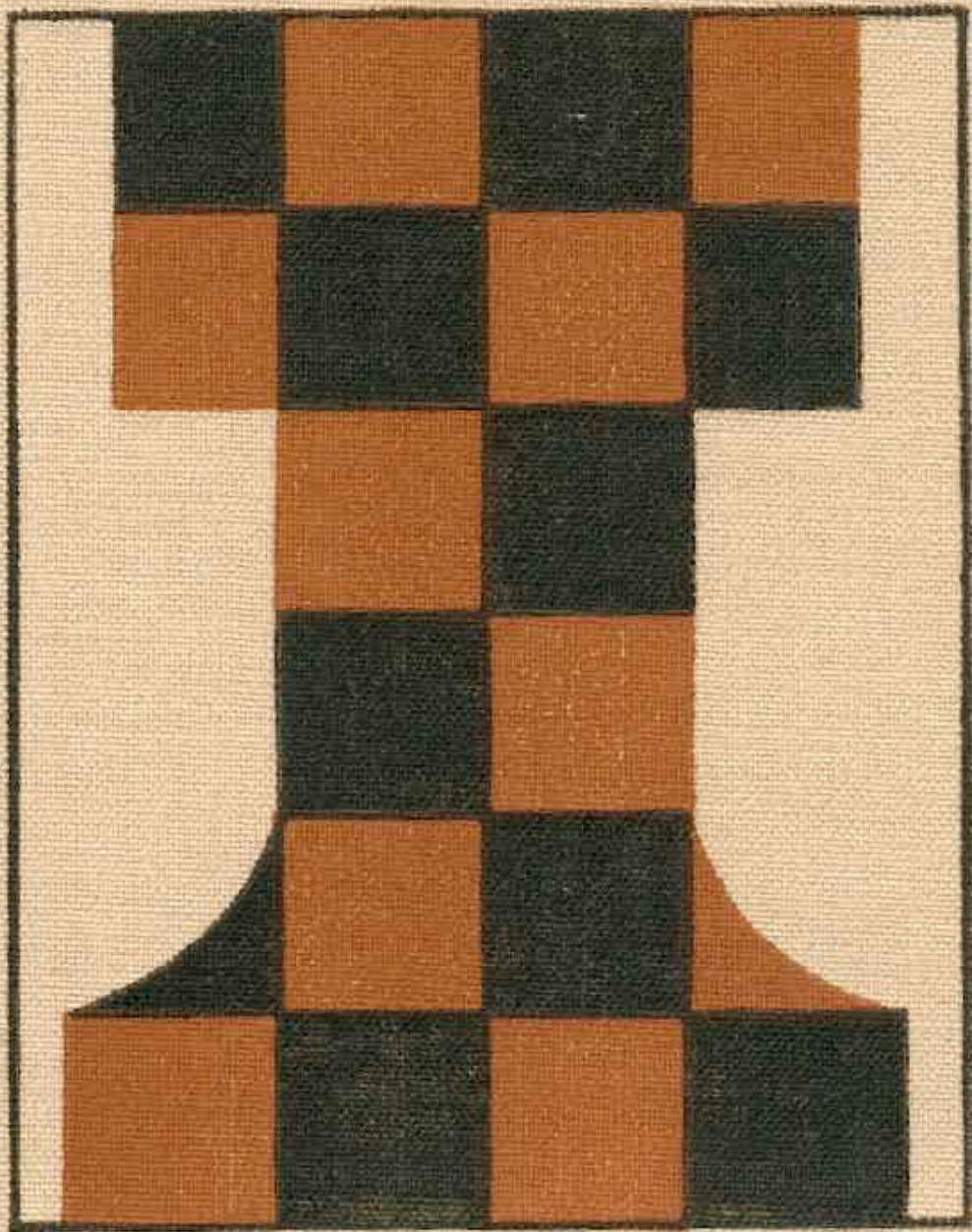


# ChessZone Magazine



## Table of contents: # 05, 2011

Games .....	4
(01) Braun,A (2538) - Efimenko,Z (2683) [A42].....	4
(02) Nisipeanu,LD (2683) – Gyimesi,Z (2595) [D37] .....	5
(03) Zhao Jun (2580) – Xiu,D (2508) [E26] .....	7
(04) Bosiocic,Mari (2561) – Postny,E (2585) [C51] .....	8
(05) Ding,L (2637) – Li Chao2 (2646) [D70]..	<b>Ошибка! Закладка не определена.</b>
(06) Caruana,F (2716) – Bocharov,D (2595) [C41] .....	<b>Ошибка! Закладка не определена.</b>
(07) Najer,E (2638) – Moiseenko,AI (2673) [B30] .....	<b>Ошибка! Закладка не определена.</b>
(08) Maletin,P (2584) – Zontakh,A (2568) [E06].....	<b>Ошибка! Закладка не определена.</b>
(09) Nepomniachtchi,I (2729) - Frolyanov,D (2610) [B90]....	<b>Ошибка! Закладка не определена.</b>
(10) Bruzon Batista,L (2668) - Yermolinsky,A (2530) [B12]..	<b>Ошибка! Закладка не определена.</b>
Editorial staff: .....	17

**Dear readers!**

**ChessZone Magazine is open for your advertising materials.  
We have various ad packages at affordable rates!**

**We're also interested in cooperation with advertising agencies,  
and could offer great commissions for anyone  
who could bring an advertisers to us.**

**Please contact us for details**

**[chesszone@ya.ru](mailto:chesszone@ya.ru)**

## Games

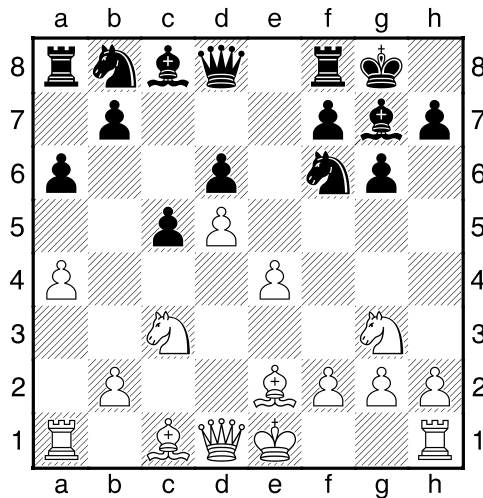
**(01) Braun,A (2538) -**

**Efimenko,Z (2683) [A42]**

Schachbundesliga 2010-11 Baden-Baden  
GER (15), 10.04.2011

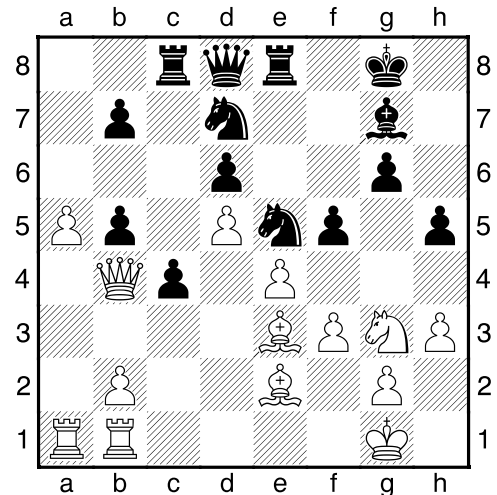
[Polivanov,Anatoliy]

**1.d4 d6 2.c4 g6 3.Nc3 Bg7 4.e4 c5 5.d5 e6 6.Nge2** [Usually Braun applies Saemisch System, but now 6.f3 can be met by 6...Ne7! , and f7-f5 is ready to be made. This is the whole point of such arrangement.] **6...Nf6** [6...Ne7 here is also possible, but it's necessary to consider with 7.dxe6! Bxe6 (7...fxe6 8.Nb5) 8.Nf4] **7.Ng3 0-0 8.Be2 a6 9.a4 exd5 10.cxd5**



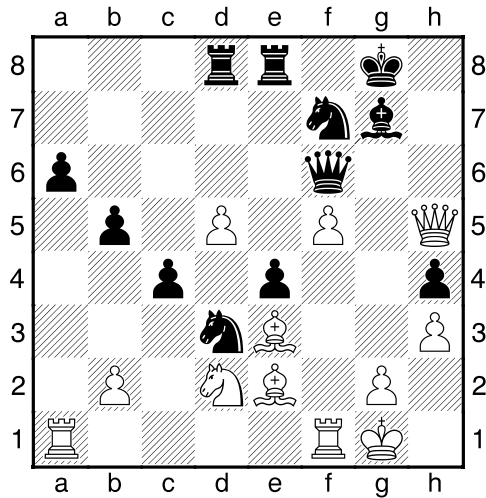
**10...Nbd7** [The best way to use ♘g3 – to disturb it after 10...h5 11.0-0 (11.Bg5 Qc7) 11...h4 12.Nh1 Re8 13.f3 Nh5 14.Be3 (14.f4? , recommended by Riazantsev in 2000, loses after 14...Bd4+ 15.Nf2 Ng3!) 14...f5 15.Qd2 Qf6] **11.0-0 Re8 12.Bf4 Ne5 13.Qd2 N Bd7 14.Rfb1** [Black wants to conduct b7-b5. Preventive 14.a5 isn't dangerous: 14...b5 15.axb6 Qxb6 with pressure on ♖b2.] **14...Rc8** [As 14...Rb8 is ineffective in view of 15.b4! (15.a5 also strong), Black tries to put c5-c4 at first.] **15.h3!** [White finds the most appropriate plan – to use black pieces' uneasiness after Be3 and f4. Besides, 15.b4? fails because of 15...cxb4 16.Rxb4 Nh5!±] **15...c4 16.Be3** [16.a5 Rc5] **16...h5!?** [16...b5 17.axb5 axb5 seems the most logical, but

after strong 18.Bd4! (instead 18.f4?! Nd3 19.Bxd3 cxd3 20.Qxd3 b4 21.Nd1 h5!) 18...h5 (18...b4 19.Na4) 19.b4! Black could be deprived of counterplay.] **17.a5** Under bishop at e3, this advancement wins in power, as b7-b5 isn't possible anymore. **17...Bb5** Finally black kings have square d7 at own disposal. [It's too early for 17...h4 18.Nf1 Nd3 19.Bxd3 cxd3 – 20.f3!± , and ♗d3 is doomed.(20.Qxd3? Nxe4 21.Nxe4 Bb5) ] **18.f3 Nfd7** Two ideas at once – Nd7-c5 and f7-f5. **19.Nxb5!** [Braun does right, rejecting the line 19.f4 Nd3 20.Nxb5 axb5 21.Bxd3 cxd3 22.Qxd3 Rc4 (22...Nc5!?) 23.Qb3 Qh4 with excellent compensation.] **19...axb5 20.Qb4** Two ♗ at sight – b5 and d6. But Efimenko has something to answer with. **20...f5!**



Two strategies has collide, and fight has reached own culmination.**21.a6!** [21.Qxd6?? Bf8+ ; that's why White is making a room for the queen at a6; to open line "e" is undesirable – 21.exf5?! Nc5! 22.Qxb5 Nxf3+ 23.Bxf3 Rxe3→ 24.fxg6? Qg5+; the only reasonable alternative is 21.Qxb5 Nc5 22.f4 Ned3 23.Qxc4 Nxb2 24.Qb5 , though after 24...Nxe4 25.Nxe4 Rxe4 26.Bb6 Qe8! Black is OK again.] **21...bxa6 22.Qxd6 h4 23.Nf1 fxe4 24.f4!** [24.fxe4 Nf6 has no prospects for White: 25.Qxd8 (25.Qxa6 Nxe4 26.Qxb5 c3!) 25...Rcxd8 26.Nd2 Nf7 , and ♗e4 falls.] **24...Nd3 25.Qxg6 Nf8** Dispelling the

queen from active place. **26.Qf5** [26.Qxa6 Qxd5+] **26...Ra8!** Played very calmly. Now all black ♖ are protected, whereas white ones can't boast the same. **27.Nd2 Qf6?!** [Perhaps, 27...Nb4! was better: 28.Bh5 Qxd5 29.Qxd5+ Nxd5 30.Bxe8 Rxe8 31.Nf1 Ne6! with very good chances to the victory, despite exchange's absence.] **28.Qg4** Now White is going to use an unexpected counterchance – f5 with threats to ♖e4. **28...Ng6** [As it turned out, 28...Nxb2 29.f5 Qe5 30.Qxh4 c3 meets 31.Rf1! Nd7 (31...cxd2 32.f6→) 32.Nb3 with very dangerous initiative.] **29.Rf1 Rad8** [And now 29...Nxb2 is not unpunished: 30.d6! Qc3 (30...Qxd6 31.f5 Ne5 32.Qxh4) 31.Bb6! Qf6 (31...Qxd2 32.Qxg6 Qxe2? 33.Bd4+-) 32.Be3, and all is resulted in draw. 29...Rad8 is called up to prevent d5–d6 opportunity.] **30.f5 Nge5 31.Qh5** [31.Qxe4? Nc6 32.Qf3 Nd4] **31...Nf7**



**32.Rxa6!** [After 32.Qg4 Black has nothing better than 32...Nde5 33.Qf4 Nd3 with repetition, but Braun is reckoning, that his position is able to give more.] **32...Qxa6 33.f6 Rd6** [Of course, 33...Bxf6 34.Qg6+ Kf8 35.Rxf6 would be a complete disaster.] **34.Bd4!?** [White continues to play with fire. Simple 34.fxg7 Rf6 35.Qxh4 Rxf1+ 36.Nxf1 (and bishop is going to d4), was very promising.] **34...Bh6 35.Qg6+ Kf8** [35...Kh8? 36.Qxh6+ Nxh6 37.f7+] **36.Bh5 Nde5** [Efimenko plays for the winning too – otherwise, 36...Qb7 37.Qh7 Rxd5 38.Bxf7

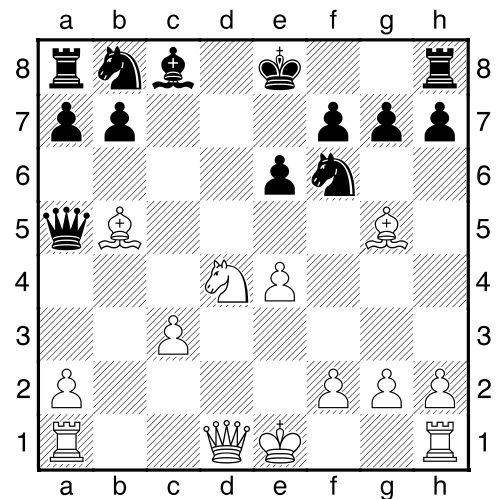
Qxf7 39.Qxh6+ Kg8 40.Qxh4 Rxd4 41.Qg5+ leads to truce.] **37.Qh7 Rxf6 38.Bc5+?** [The fatal mistake. Worth to choose an equal ending after 38.Rxf6 Qxf6 39.Bxf7 Qg7! (39...Qxf7? 40.Bc5+ Re7 41.Qh8+-; 39...Be3+ 40.Bxe3 Nxf7 41.Nxe4±) 40.Qxg7+ Bxg7 41.Bxe8 e3! 42.Nxc4 bxc4 43.Bxe5 Bxe5 44.Bb5] **38...Re7** Now White's attack is just choked. **39.Rxf6 Qxf6 40.Nxe4 Qf4 41.d6 Qc1+ 42.Kh2 Bf4+ 43.g3 hxg3+ 0-1**

**(02) Nisipeanu,LD (2683) – Gyimesi,Z (2595) [D37]**

TCh–HUN 2010-11 Zalaegerszeg HUN (8), 10.04.2011

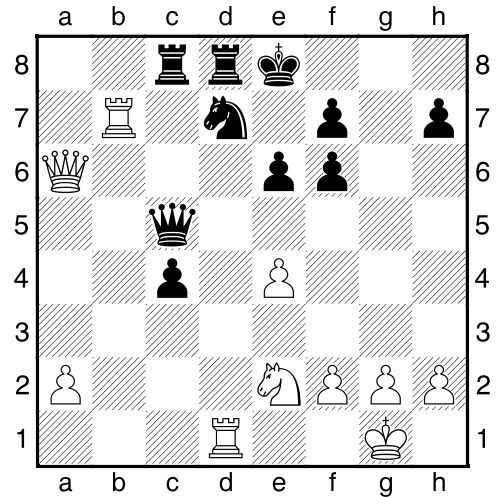
[Polivanov,Anatoliy]

**1.d4 Nf6 2.c4 e6 3.Nf3 d5 4.Nc3 dxc4** Vienna Variation of Queen's Gambit. **5.e4 Bb4 6.Bg5 c5** [Another sharp line – 6...b5 7.a4 c6 8.e5 h6 9.exf6 hxg5 10.fxg7 Rg8 11.g3! (developing the bishop to the main diagonal) 11...g4 12.Nh4 Rxg7 (12...c5 13.Bg2 cxd4 14.Bxa8 dxc3 15.Qxd8+ Kxd8 16.0-0-0+, and GM Tyomkin believes, that ending in White's favour) 13.Bg2 Bb7 14.axb5 Qb6 15.0-0 cxb5 16.d5 e5, Komarov–Naiditsch, FRA–chT 2009, and now 17.d6!? would have promised a menacing attack.] **7.Bxc4 cxd4 8.Nxd4 Bxc3+ 9.bxc3 Qa5 10.Bb5+**

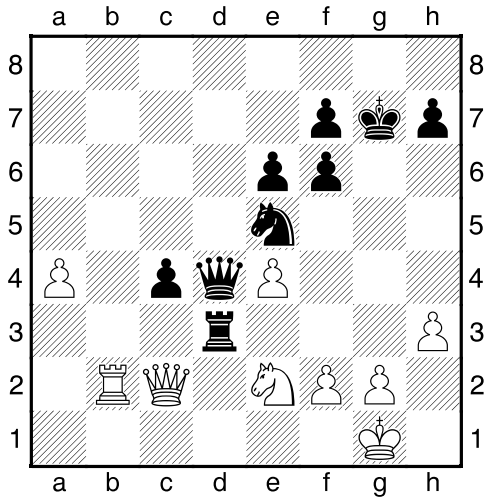


[10.Nb5 Nxe4 11.Qd4 0-0! 12.Qxe4 a6

13.Be7 axb5 14.Bb4 Qc7 , and Black is out of danger.] **10...Bd7** [10...Nbd7 is considered as principal direction too: 11.Bxf6 Qxc3+ 12.Kf1 gxf6 13.h4! (13.Nxe6 Qe5!) 13...a6 14.Rh3 , and ♖ connects to the game.] **11.Bxf6 gxf6** [11...Qxc3+? 12.Kf1 gxf6 13.Rc1+-] **12.Bxd7+** [12.Qb3 Bxb5 13.Nxb5 0-0 14.0-0 Nc6 15.c4 Rad8 with good chances to equalize after Nc6-d4.] **12...Nxd7 13.0-0 a6** [13...Qxc3?! 14.Nb5 Qc6 15.Nd6+ Ke7 16.Nxf7! Rhc8 (16...Kxf7 17.Rc1 Qb5 18.a4) 17.Qh5 Qxe4 18.Rad1 - black king is unsafe.] **14.Rb1 Qc7 15.Qf3** "The idea is just to develop my queen to an active square, protect c3 and attack f6 at the same time, thus preventing Black's knight from activating" (c) Le Quang Liem **15...Rc8** [Long castle 15...0-0 is a little bit risky here: 16.Rb4 Nc5?! 17.Rfb1 e5 , Le Quang-Naiditsch, Dortmund 2010, and now White could win by 18.Qxf6! exd4 19.cxd4 Nd7 20.Qh6!] **16.Rfd1** [16.e5 fxe5 17.Nxe6 fxe6 18.Rxb7 Qc6 19.Qh5+ gives only a draw, but now e4-e5 will be the real threat. That's why ♗b7 leaves from under strike.] **16...b5N** [16...0-0 17.Ne2 Rfd8 18.Ng3 Kf8 19.Nh5 Qe5 20.Rd4 Ke7 21.Rbd1 Rc7 22.Qh3! Rdc8 23.f4 Qc5 24.Qh4 Rg8 , Kazhgaleyev-Kulaots, Men Olympian 2010, and if 25.e5 , then White obtains a decisive advantage.] **17.Ne2 Ke7!** In previous annotation black king after being castled moved to e7 nevertheless. So, why not doing it right now? **18.c4!?** Quite curious idea, aimed to use king's e7 posture. **18...bxc4** [18...Qxc4 was possible too - 19.Rbc1 (19.Qa3+ Nc5) 19...Qb4 (19...Qxa2? 20.Qd3+-) 20.Qe3 Rxc1 21.Qxc1 Qc4 22.Qd2 Qc7 23.Qb4+ Nc5 , and Black holds.] **19.Qa3+ Qc5** [19...Nc5 20.Rd4±] **20.Qxa6 Rhd8 21.Rb7 Ke8**



**22.Nc3?!** [Nisipeanu should have feeling, that his position isn't better already, so course to the endgame would be righteous: 22.Qa4 Qc6 23.Qxc6 Rxc6 24.Nc3 Ra6 25.Rb4 Ra3 26.Rxc4 Ne5 27.Rxd8+ Kxd8 28.Rc7!?, and after 28...Rxa2 29.Nxa2 Kxc7 draw will be fixed soon.] **22...Ne5** That's it - Black is winning the "d"-line. [22...Ra8?? 23.Rbx7 Rxa6 24.Rxd8+ Ke7 25.R1d7#] **23.Qa4+ Kf8 24.Rb5 Qc6 25.Rxd8+ Rxd8 26.h3?** [Inert move. Was necessary to choose 26.f4 Nd3 27.Qa7 Nxf4 28.Rb7 Qe8 29.e5! with some activity.(29.Qc5+ Kg7 30.Qxc4 Rd2⚡) ] **26...Kg7!** [Excellent prophylaxis, which decides the game. Immediate 26...Rd3?! is inexact due 27.Rb8+ Kg7 28.Qxc6 Nxc6 29.Rc8 with some chances for salvation. But now there is no defence from Black's invasion through the line "d".] **27.Qc2 Rd3 28.a4 Qd6** [Maybe, 28...Qd7!? even more accurate.] **29.Rb2** [White may prefer 29.Rb1 Rd2 30.Nb5 (no such opportunity with queen at d7), although 30...Qd8 31.Qc3 Rd1+ 32.Rxd1 Qxd1+ 33.Kh2 Qxa4 is won neither.] **29...Qd4 30.Ne2**



**30...Rd1+ 31.Kh2 Nf3+!** Gyimesi finishes the game with nice combination. **32.Kg3 Qe5+ 33.Nf4** [33.Kxf3 Rd3+] **33...Rd3! 34.gxf3** [34.Rb5 Nd4+ 35.Qxd3 cxd3 36.Rxe5 d2!-+] **34...Qg5+ 35.Kh2 Qxf4+ 36.Kg1 Qxf3 37.Rb1 c3 0-1**

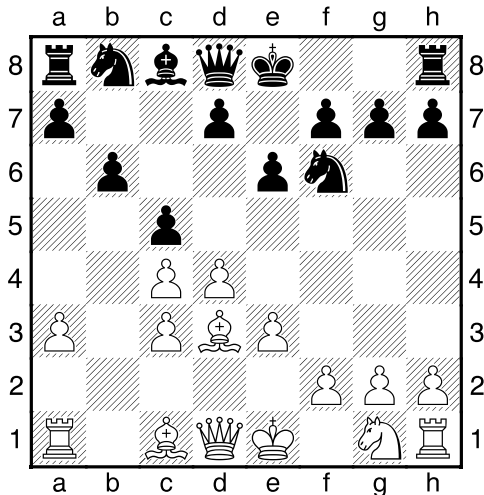
**(03) Zhao Jun (2580) –**

**Xiu,D (2508) [E26]**

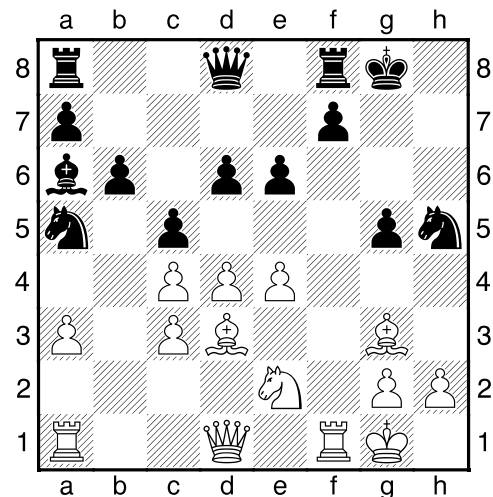
ch-CHN 2011 Xinghua Jiangsu CHN (9), 08.04.2011

[Polivanov,Anatoliy]

**1.d4 Nf6 2.c4 e6 3.Nc3 Bb4 4.a3 Bxc3+ 5.bxc3** Saemish System in Nimzo-Indian. White plans are the same as in analogous variation of Kings Indian: to create a powerful center (f3, e4...), while Black will assault on  $\text{c4}$ . **5...c5 6.e3 b6 7.Bd3**

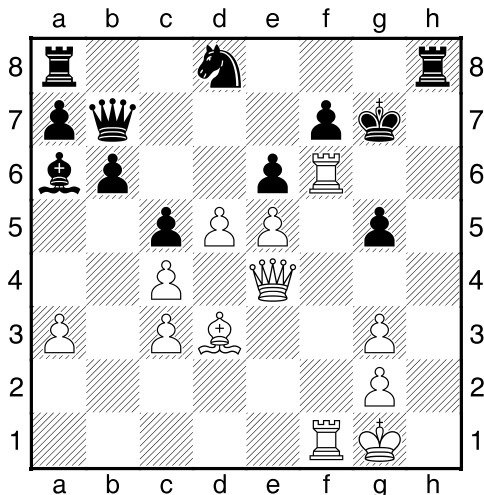


**7...Nc6** [Of course, this is a matter of taste, but I think, that 7...Bb7 is better – now White has to spend a tempo on 8.f3, and the game can be developed so: 8...Nc6 9.Ne2 0-0 10.0-0 Rc8 11.e4 Ne8! (to prevent a pin after Bg5) 12.e5 d6 13.f4 Na5? (opening inaccuracy – worth to swap  $\text{c4}$  13...cxd4 14.cxd4 at first, and only then 14...Na5 15.f5 dxe5 16.fxe6 e4!?) 14.f5 cxd4 15.fxe6!±, Khachatryan-Polivanov, Yuzhny 2009] **8.Ne2 Ba6?** [As we see, in this system Black should be very careful – only 8...0-0 9.e4 Ne8! is good here.] **9.e4!** In view of two threats (e4-e5 and Bg5) a hardship is imminent. **9...0-0 10.Bg5 h6 11.Bh4 g5N** [Earlier met 11...d6 12.f4 e5 13.d5 Nb8 14.fxe5 dxe5 15.0-0 Nbd7 16.Qc1! (maintaining the pin; 16.Qd2? Nxe4) 16...g5 (16...Qc7 17.Bxf6 Nxf6 18.Rxf6 gxf6 19.Qxh6+-) 17.Be1 Ne8 18.Ng3±, Koblencs-Kan, Riga, 1952. Xiu decides to banish the bishop h4 immediately.] **12.Bg3 d6 13.f4** [Another breakup was also very strong: 13.h4!? g4 (13...Nh5 14.hxg5 Nxc3 15.Nxc3 Qxc3 16.Rh5+-) 14.Bf4 Kg7 15.Ng3! with threats e4-e5, Ng3-h5 or even Bxh6 – it's very hard to defend.] **13...Na5?!** [N8...Nh5] **14.fxc5 hxc5 15.0-0**  $\text{c6}$  is under blow. **15...Nh5**



[15...Ng4 loses because of 16.Nf4! Ne3 17.Qh5 Nxf1 18.e5+-] **16.Bxd6!!** Despite  $\text{c6}$ 's departure from f6, White anyway dares for this capture. **16...Qxd6 17.e5 Qe7**

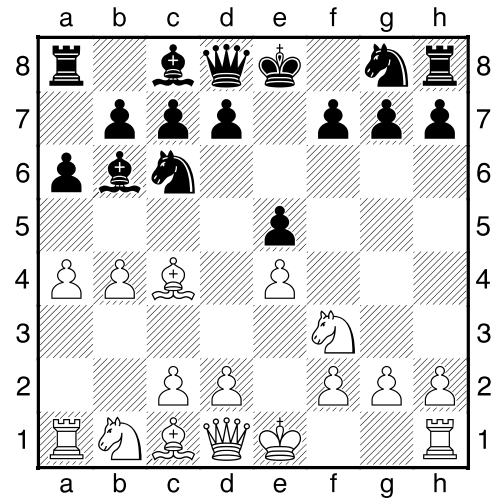
[Queen should be situated here, otherwise 17...Qd8 18.Ng3 Nxd3 19.hxd3 f5 20.exf6 Rxf6 21.Qh5+-] **18.Ng3 Nxd3** [18...Ng7 19.Ne4 is hopeless.] **19.Rf6!** [Zhao directs an attack with inspiration. 19.hxd3?! would give a precious time for 19...f5! , and the draw comes: 20.exf6 Rxf6 21.Rxf6 Qxf6 22.Qh5 Qh8! (22...Qg7? 23.Re1!+-) 23.Qg6+ Qg7 24.Qxe6+ Qf7 25.Qh6 Qg7=] **19...Kg7** [Queen's transition to g7 doesn't save: 19...Rfd8 20.hxd3 Qf8 21.Qh5 Qg7 22.Raf1 Rd7 23.Rh6!+-; the most persistent try is 19...Bxc4 20.hxd3! (of course, not 20.Qg4? Bxd3 21.Qxd3+ Bg6 22.Rxd3+ fxd3 23.Qxe7 Ne2+ 24.Kh1 Rae8) 20...Bxd3 21.Qxd3 Kg7 22.Qe3 Rh8 , but White has a reply 23.Raf1! : 23...Rag8 24.Qxd3+ Kf8 25.Rxf7+ Qxf7 26.Rxf7+ Kxf7 27.Qf6+ Ke8 28.Qxe6+ Kd8 29.Qf7 and ♖ "d" and "e" will bring the victory.] **20.Qg4 Rg8 21.hxd3 Nb7** [This is the only way to protect ♖f7, as 21...Kf8 22.Raf1 Rg7 fails because of 23.Bg6] **22.Raf1 Nd8** It seems, that Xiu has beaten off the first wave of attack. But... **23.Qe4!** Double strike finishes the game. **23...Qb7** [23...Bb7 24.Rg6+! Kh7 25.Rxe6+-] **24.d5** [24.Qh7+ Kf8 25.Be4 was enough, but Zhao has something different in mind.] **24...Rh8**



**25.Qg6+!** Sacrifice as if from the tactics book. **25...fxg6** [25...Kf8 26.dxe6] **26.Rxg6+ Kh7 27.Rxg5+ Kh6 28.Rg6+ Kh7 29.Rg4+ Kh6 30.Rf6+ Kh5 31.Rh4+ 1-0**

**(04) Bosiocic, Mari (2561) – Postny, E (2585) [C51]**  
Zagreb Open A Zagreb CRO (4.1),  
14.04.2011  
[Polivanov, Anatolij]

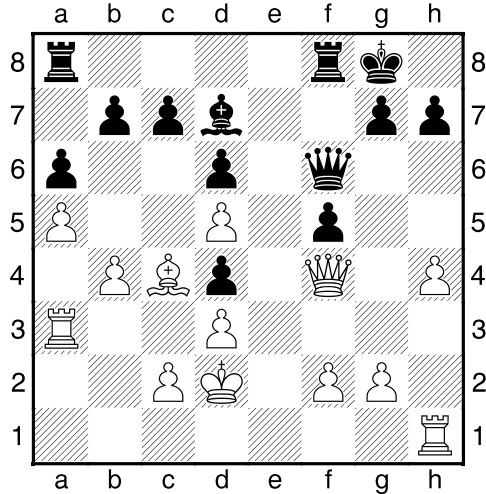
**1.e4 e5 2.Nf3 Nc6 3.Bc4 Bc5 4.b4 Bb6!?** Maybe, this is the best to deal with Evans Gambit, if someone doesn't want to go deep into complications. **5.a4** [5.b5 Nd4 6.Nxe5? Qg5+ – does everyone remember a "poisoned pawn" line?] **5...a6**



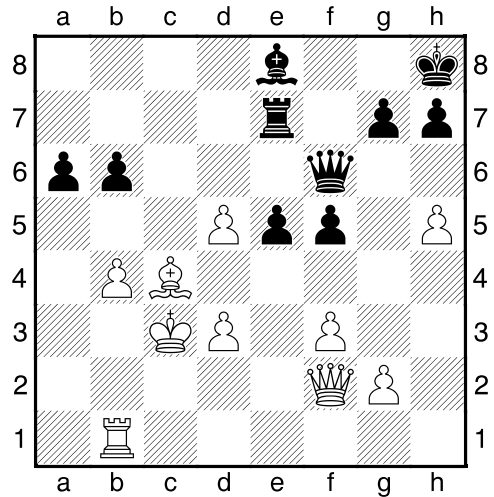
**6.Nc3** [I have recently tried 6.Bb2 d6 7.b5 , but obtained nothing: 7...axb5 8.axb5 Rxa1 9.Bxa1 Nce7 10.d4 exd4 11.Nxd4 (11.Bxd4 Bxd4 12.Qxd4 Nf6 13.e5 Nf5!) 11...Nf6 12.Nc3 0-0 13.0-0 c6= , Polivanov–Semcesen, Lviv 2010] **6...Nf6 7.Nd5** [7.d4!? Bxd4 8.Nxd4 Nxd4 9.0-0 d6 10.f4 makes some sense, but 10...Be6! stifles an attacking impulse.] **7...d6** [Apparently, Black isn't pleased with continuation 7...Nxd5 8.exd5 Nd4 (≤8...e4 9.dxc6 exf3 10.Qxf3±) 9.a5 Ba7 10.d6!?≡ , so he moved d6 oneself.] **8.d3** [White can fight for an opening advantage only by means of 8.Nxb6 cxb6 9.d3 (not 9.Qe2?! Nxb4 10.Bxf7+ Kxf7 11.Qc4+ Nbd5 12.exd5 b5! , undoubling ♖) , counting on 9...Nxb4 10.Rb1 Nc6 11.Be3 Nd7? 12.Ng5+-] **8...Nxd5 9.exd5 Nd4** [9...Nxb4? 10.c3] **10.a5N** [10.c3 Nxf3+ 11.Qxf3 0-0 12.a5 Ba7 13.0-0 Bd7 , Rouchouse–Marcelin, FRA–chT 1996, and Black also doesn't experience any trouble.] **10...Nxf3+**



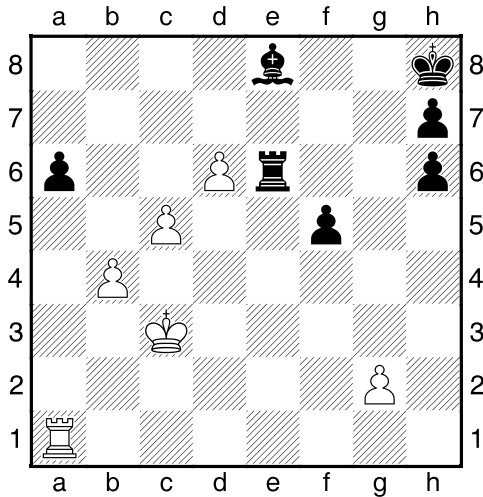
**11.Qxf3 Bd4 12.Ra3 0-0 13.Be3?! [Serious inaccuracy – it was necessary to castle as soon as possible: 13.0-0 f5 14.c3 Ba7 15.Be3 Bxe3 16.fxe3 f4 17.d4!⇌] 13...f5! Now Postny intercepts the initiative. 14.Bxd4 [14.0-0 f4 15.Bxd4 exd4] 14...exd4 15.Qf4 White tries to hold black ♗ even at the price of uncastled king. 15...Qf6 16.h4 [16.0-0 g5⇌] 16...Bd7 17.Kd2**



[17.0-0 h6 18.h5 Be8] **17...Rae8** Having at own disposal an excellent square e5, Black is fighting for the "e"-line. **18.Raa1 Re5 19.Rae1 [19.Qxd4? Re2+ 20.Kc3 Rxc2+] 19...Rfe8 20.Rxe5** [This is a compulsory measure – if not now, then 2 moves later: 20.Bb3 Kh8! 21.Kd1 Qe7 22.Rxe5 dxe5 23.Qd2 c5-+; 20.Qg5 doesn't work too – 20...Qxg5+ 21.hxg5 f4 22.Re4!? Rxg5 23.Rxd4 Rxg2 24.Rxf4 g5-+] **20...dxe5 21.Qg3 Qd6 22.Rb1 Kh8** [22...Bb5!?, with idea to exchange at c4 and conduct c6, also deserves attention.] **23.f3 Re7 24.c3!?** Seems paradoxically – White is exposing own king, which is quite "undressed" already. But now game is becoming more complicated. **24...dxc3+ 25.Kxc3 b5 26.axb6 [26.Bb3 c5-+] 26...cxb6 27.h5 Qf6** [As line "c" is opened now, 27...Re8! would be logical.] **28.Qf2** In order to have Qd4 in case e4. **28...Be8**



**29.h6!** Exclamation mark is given not for the move itself (in fact, this is the only one), but for the whole idea. [29.Ra1? b5 30.Bb3 e4+ 31.Qd4 Rc7+-+] **29...gxh6?! [And Postny finally made a mistake. 29...Qxh6?! isn't better: 30.Ra1! b5 31.Qc5 – ♖e7 is unprotected now; only 29...b5! consolidates an edge for Black.] 30.f4! b5 31.fxe5 Qxe5+ 32.Qd4** Bosiocic' intentions now are clear – to go to the endgame... without a piece. **32...bxc4 33.Qxe5+ Rxe5 34.dxc4** Despite an extra bishop, Black has no time to laugh – white passers are very dangerous, and ♗a6 is going to be lost. **34...Bh5?! [Worth to try to hold a defence after 34...Bd7 35.Ra1 Bc8] 35.d6** Now bishop has to come back. [Perhaps, hope was pinned on 35.Ra1? Re3+ 36.Kd4 Re4+ 37.Kc5 Be2, but that's not the case here.] **35...Re6 36.c5 Be8 37.Ra1**



**37...Bb5?** [Now it's lost completely. It was necessary to forget about ♖a6 and bring the king instead: 37...Kg7 38.Rxa6 Kf6 , and probably it's still draw.] **38.Ra5!** That's it! There is no defence from sacrifice on b5, so pawns c5 and d6 are unstoppable. **38...Re3+ 39.Kd4 Rd3+ 40.Ke5 Re3+ 41.Kf6 1-0**

**(05) Ding,L (2637) –**

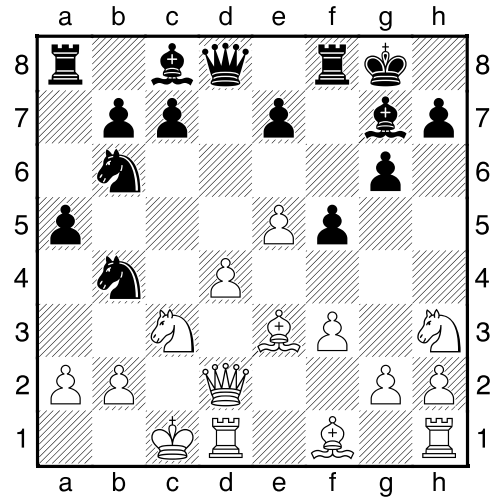
**Li Chao2 (2646) [D70]**

Chinese League Ningbo CHN (3),  
14.04.2011

[Polivanov,Anatoliy]

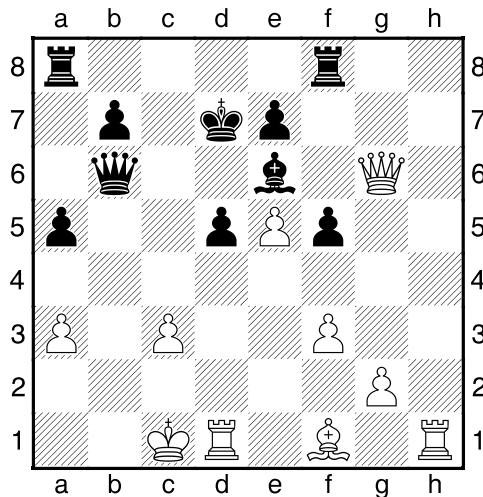
**1.d4 Nf6 2.c4 g6 3.f3!?** Those, who don't wish to compete in long lines of Grunfeld Defence, frequently use this continuation. Of course, knowing of Saemish System is advisable. **3...d5 4.cxd5 Nxd5 5.e4 Nb6 6.Nc3 Bg7 7.Be3 0-0 8.Qd2 Nc6 9.0-0-0 f5!?** Energetic move, main threat of which to exchange pawns "f", so bishop f1 would become vulnerable. [9...e5 is also applied: 10.d5 Nd4 (10...Na5 11.Bxb6 axb6 12.b4) 11.f4 c5 12.fxe5 Bg4 13.Re1 Bxe5 14.h3 Qh4 15.Bd3 Rac8±] **10.e5** [Now the whole fight will turn around point d5. Another way – 10.h4 fxe4 11.h5 (11.fxe4?! Nxd4) , but as next famous game has shown, Black is OK: 11...gxh5 12.d5 (12.Rxh5 Bf5 13.Rg5 Bg6 14.Be2 e5!) 12...Ne5 13.Bh6 Nec4 14.Qg5 Rf7 15.Bxc4 Nxc4 16.Rd4 Qd6! 17.Bxg7 Rxg7 18.Qxh5 Qf4+ 19.Kb1 Bf5 20.fxe4 Bg4 21.Nge2 Qd2! 0-1, Mamedyarov–Kurnosov, Aeroflot 2009] **10...Nb4**

**11.Nh3 a5N**

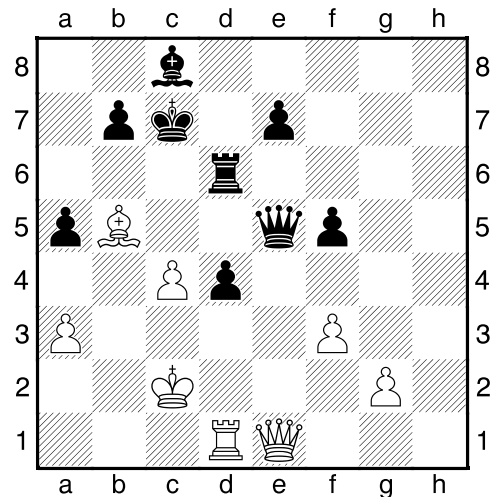


[11...Be6 12.Kb1 Qd7 13.Nf4 Bf7 14.a3 a5 15.d5?! (15.h4!?) 15...Bxe5 16.axb4 axb4 17.Nb5 Ra5 18.Bxb6 (18.Qxb4 Rfa8 19.Na3 Bd6+, Gongora–Abreu, Albacete 2010) 18...cxb6 19.Qxb4 Rfa8 with hardly resistible attack, Motylev–Svidler, Wijk aan Zee 2007] **12.a3 N4d5** [Compensation after 12...Be6!? 13.axb4 axb4 is probably not enough: 14.Nb1 Qd7 (14...Nd5 15.Bc4) 15.Nf4 Bb3 16.Qxb4 Bxd1 17.Bb5! c6 18.Bc4+ Nd5 19.Rxd1±] **13.Nf4 Nxf4** [13...Nxe3 14.Qxe3] **14.Bxf4 c6 15.h4 Be6!** [Li Chao has come to the conclusion that 15...h5 can only make things worse: 16.Bh6 Be6 17.Qg5 Kh7 (N9...Qe8) 18.Bxg7 Kxg7 19.g4! fxg4 20.Bd3 Qe8 21.fxg4 Bxg4 22.Rdf1 Nd7 23.Ne2!+–] **16.h5 Nd5 17.hxg6 hxg6 18.Bh6 Nxc3** [Attempt to cut the connection between queen and bishop 18...f4 fails in view 19.Bc4!] **19.bxc3** [White won't have any attack after 19.Qxc3 Bxh6+ 20.Rxh6 Kg7; 19.Bxg7 Kxg7 20.Qh6+ Kf7 leads to the same, as further.] **19...Qb6!** Black answers with a snarl – now Ding also should take care of own king. **20.Bxg7** [Such feeling, that brave 20.Qg5! is stronger – 20...Qb3 21.Kd2 Qb2+ 22.Ke1 Qxc3+ 23.Kf2 f4 24.Be2! Rf7 25.Qxg6 Bf5 26.Qh5 Raf8 27.Bxf4 with pawn up, though position remains complicated.] **20...Kxg7 21.d5 cxd5** [21...Bxd5 22.Qh6+ Kf7 23.Qh7+ Ke8 24.Qxg6+ Bf7 25.Qxf5 Qe3+ 26.Kb2 Qf2+ 27.Qc2+–] **22.Qh6+ Kf7 23.Qh7+ Ke8**

**24.Qxg6+ Kd7**



**25.Rh6!?** [White decided to refrain from 25.Rxd5+ Kc7 26.Qg5! , and after 26...Bxd5 (26...Rfe8 27.Rb5) 27.Qxe7+ Kb8 28.Qxf8+ Ka7 he may choose among 29.Qxf5 with draw and more risky 29.Qh6! Qc5 30.Qd2 (probably, draw anyway).] **25...Qe3+ 26.Kc2?** [Wrong square! 26.Kb2! Qxe5 27.Bb5+ Kd6 28.f4! Qe3 , and now fantastic 29.Qg7!! Rg8 30.Qe5+ leads to equality: 30...Qxe5 31.fxe5+ Kc5 (31...Kxe5 32.Re1+) 32.Rxe6 Kxb5 33.Rxd5+ Kc4=] **26...Qxe5 27.Bb5+** [27.f4 is pointless already – 27...Qe4+ and Rf6.] **27...Kd6 28.c4 Rf6** [29.Qg7 Rc8 [29...Rhx6? 30.c5+] **30.Rh8 d4** Black has rebutted all threats, so now a phase of realization will come. **31.Rxc8 Bxc8 32.Qh8** [32.Qg8 Kc7 33.Qd5 Qxd5 34.cxd5 Kb6!] **32...Kc7 33.Qh4 Rd6** [33...f4 even better.] **34.Qe1**



White is seeking for salvation in ending, but black ♖ are too advanced. **34...d3+ 35.Kb3 Qxe1 36.Rxe1 e5! 37.Kc3 e4 38.Kd2 Re6** [38...Rg6 leaves more questions: 39.fxe4 fxe4 40.Rxe4 Rxc2+ 41.Ke3 (41.Kxd3? Bf5) ] **39.c5 Bd7 40.Bc4 Re8 41.g4** White tries to break ♗ pair, but now another passed pawn will form. **41...fxg4 42.fxe4 Kc6 43.e5 Bf5!** [43...Kxc5?! 44.Bf7 Re7 45.e6] **44.Bf7 Re7 45.e6 Kd5** Of course, ♗e6 is more important than c5 one. **46.Rh1 Bxe6 47.Bxe6+ Rxe6 48.Kxd3 Rg6** The rest doesn't require any comments – pawn "g" constrains white forces. **49.Rh5+ Kc6 50.Ke2 g3 51.Kf1 g2+ 52.Kg1 Rg3 0-1**

**(06) Caruana,F (2716) –**

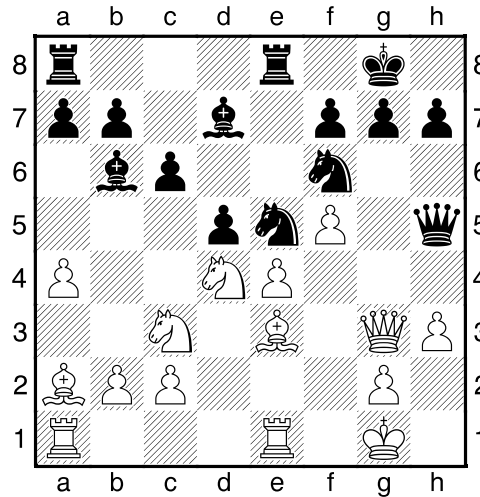
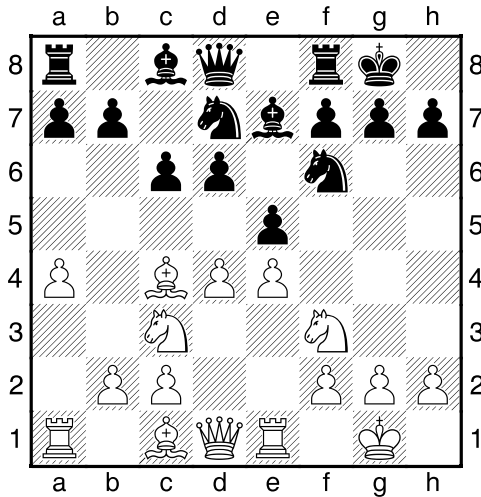
**Bocharov,D (2595) [C41]**

TCh–RUS Premier Olginka RUS (1),

12.04.2011

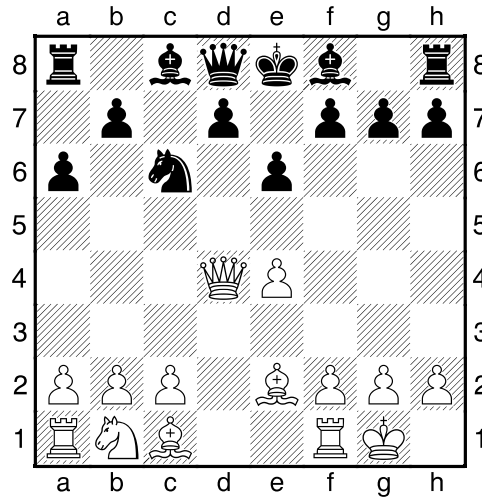
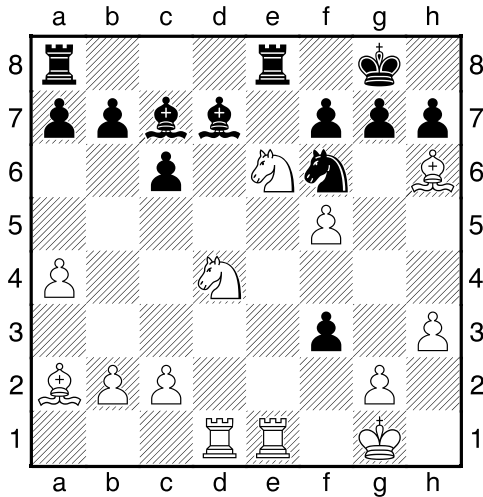
[Polivanov,Anatoliy]

**1.e4 d6 2.d4 Nf6 3.Nc3 e5 4.Nf3 Nbd7** This redaction of Philidor Defence has some merits in comparison with 1.e4 e5 2.Nf3 d6 3.d4 Nd7, because 4.Bc4! with Ng5 threat poses a problem. **5.Bc4** Now Ng5 isn't dangerous, as Black has enough time to complete a castle. [Personally I like move 5.g4! very much, but it's more appropriate in rapid tournaments, than in team championship.] **5...Be7 6.0-0 0-0 7.a4 c6 8.Re1**



**8...exd4** [In his book "The Philidor Files" GM Bauer considered, among other moves, continuation 8...a5 9.h3 exd4 10.Qxd4 (10.Nxd4 Nc5 11.Bf4 Be6!) 10...Nc5 11.Bf4 Be6 12.Rad1 Qb6! with good chances to equalize.] **9.Nxd4 Ne5** [This path isn't mentioned in Bauer's survey – only 9...Nc5 10.a5! , and ♘c5 feels uncomfortable.] **10.Ba2 Re8 11.h3** [11.f4 meets 11...Bg4 , so 11.h3 first.] **11...Bd7 12.f4N Ng6 13.Be3 Qa5** Black wants to put rook on d8 with intention to conduct d6–d5. **14.Qd3!** This strong move foils Black's plans. **14...Bd8** [As it turned out, after 14...Rad8 15.b4! follows: (15.Qc4?! d5) 15...Qh5 (after 15...Qc7 16.Qc4! wins in force) 16.b5 , and it's difficult for Black to be untwisted.] **15.Bd2** [If 15.b4 Qxb4 16.Rab1 , then 16...Qa5 17.Rxb7 Bb6 and ♜b7 is risking to be lost.] **15...Qh5** [Maybe, there was some sense in 15...Qc5!?, because 16.b4 is dubious – 16...Qxb4 17.Nd5 Qc5 18.Bb4 Nxf4! 19.Qd1 (19.Qd2 Nxe4 20.Rxe4 Rxe4 21.Bxc5 cxd5) 19...cxd5 20.Bxc5 dxc5 with excellent compensation.] **16.f5 Ne5 17.Qg3 Bb6 18.Be3 d5**

[It's curious, that position after 18.Be3 happened in Bocharov's game after a few days from this one... only with White's turn to move (his opponent saves one tempo due to Bd2–e3, not Be3–d2–e3): 18...-- 19.Bf2 Re7 20.Rad1 Rae8 21.Nde2 d5 22.Bxb6 axb6 23.exd5 Bxf5 24.d6 Rd7 25.Nd4 Be4?! (25...Qg6 26.Nxf5 Qxf5±) 26.Rd2 1-0, Frolyanov–Bocharov] **19.Bf2** [19.exd5? Nf3+! 20.Qxf3 Qxf3 21.Nxf3 (21.gxf3 Rxe3 22.Rxe3 Bxd4) 21...Bxe3+ 22.Kf1 Bxf5i] **19...Qh6!** Aiming to disturb the queen g3. [On 19...c5 20.Ne6! is prepared: 20...fxe6 21.exd5±] **20.Be3** [20.exd5 Nh5 21.Qh4 g5! 22.Qe4 (22.fxg6 Nxc6+) 22...Nf6 23.Qe3 Neg4 24.Qd2 Nxf2 25.Qxf2 g4!♞] **20...Qh5 21.Rad1!?** Being not agreed to the draw, Caruana puts a hard choice in front of opponent. **21...dxe4** [21...c5 22.Nf3 Nxf3+ 23.gxf3 d4 24.Bg5! ♜ 21...Ba5 is parried by the same trick: 22.Bg5! Nxe4 23.Nxe4 Bxe1 24.Rxe1 dxe4 25.Bf6±; 21...Nxe4 22.Nxe4 dxe4 23.Ne6! Bxe3+ 24.Qxe3 Qxf5 25.Ng5♞] **22.Nce2** [22.Ne6 here doesn't have the same effect: 22...Bxe3+ 23.Rxe3 fxe6 24.Qxe5 Kh8) 22...Bc7? [22...h6! would secure an edge for Black: 23.Qf2 (23.Nf4 Qg5+) 23...Bxd4 24.Nxd4 Nd5 with clear ♜ up.] **23.Nf4 Qh6 24.Nfe6!** The same idea, but in much powerful implementation. **24...Nf3+ ♜ 25.Qxf3 exf3 26.Bxh6**

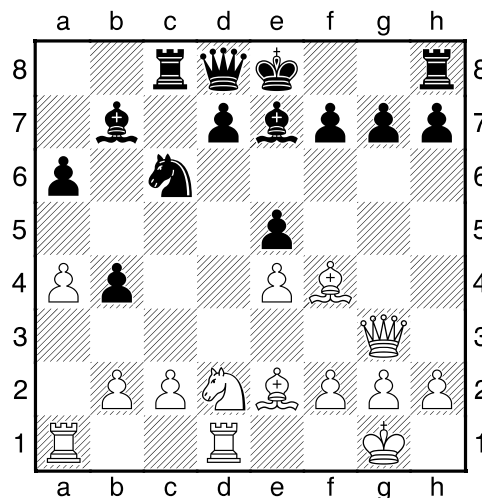


**26...fxe6?** [This error once and for all puts Bocharov's posture on the verge of defeat: only 26...Bg3! is suitable here – 27.Be3 (27.Re3 gxh6 28.Rxf3 Be5 29.Nc5 Bc8=) 27...Bxe1 28.Rxe1 fxe6 29.fxe6 Bc8 30.e7+ Nd5 , and Black holds.] **27.fxe6 Bc8 28.Bg5 fxg2 29.e7+ Kh8** [29...Nd5 30.Nxc6! bxc6 31.Rxd5+–] **30.Kxg2** [No need to hurry with 30.Bf7 ] **30...Nd5 31.Bxd5 cxd5 32.Nb5 Bb8** All black pieces are at the last "file" – that's symbolic. **33.Rxd5 b6 34.Rf1 1-0**

**(07) Najer,E (2638) – Moiseenko,A1 (2673) [B30]**  
TCh-RUS Premier Olginka RUS (2),  
13.04.2011  
[Polivanov,Anatoliy]

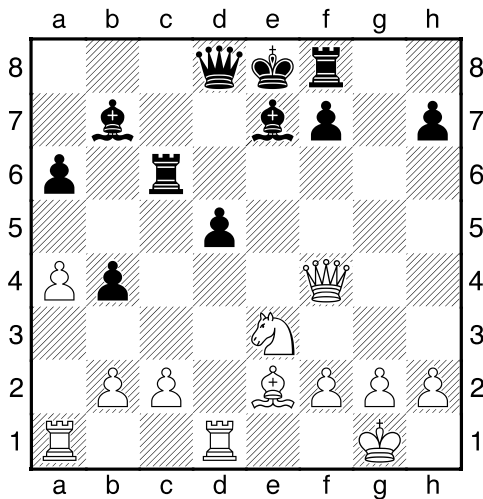
**1.e4 c5 2.Nf3 Nc6 3.Bb5 e6 4.0-0 Nge7 5.d4** Very rare move. Obviously, Najer wanted to obtain an unfamiliar position. [5.c3 d5 6.exd5 Qxd5 7.Re1 occurred in Adams–Savchenko, CZM 08/2010] **5...Nxd4** [One usually prefers 5...cxd4 6.Nxd4 in order to have an option 6...Qb6 : 7.Nxc6 bxc6 (7...Qxb5?! 8.Nd4 Qb6 9.b3±) 8.Bd3 Ng6 9.Nc3 Be7 10.Na4 Qa5 11.c4] **6.Nxd4 cxd4 7.Qxd4 a6 8.Be2N** [Quite logical – in contrast to 8.Bd3 , White keeps "d"-file open for the ♖.] **8...Nc6**

**9.Qc3!** Maybe, this is the only way to fight for the opening advantage – White is embarrassing black pieces to be developed. **9...b5** Moiseenko wants to put own ♖ at c8 to disturb queen c3. But that plan requires some time. **10.Bf4 Bb7 11.Rd1 Rc8 12.Qg3 Be7?** [If 12...Ne7 (planning to put ♘ on g6), then 13.c4! bxc4 14.Nd2 Ng6 15.Nxc4 Bxe4 16.Bd6 with huge initiative; but Black may still go to this line, only instead 13...bxc4 worth to choose 13...Bxe4 14.cxb5 Nf5 with unclear game.] **13.a4!** [Sure, not 13.Qxg7?! Bf6 14.Qh6 Bxb2 ; now Najer makes a room for ♖a1 and provides square c4 for the ♘.] **13...b4 14.Nd2** [And here 14.Qxg7 is dubious in view of 14...Bf6 15.Qh6 Bxb2 16.Ra2 Qf6! with exchange.] **14...e5?!**



[Black's business is already very compli-

cated – thus, 14...Nd4 15.Bd3 0-0 loses after 16.Bh6 Bf6 17.e5; maybe, it was nothing else than struggle after 14...0-0 15.Nc4] **15.Nc4!!** [Moiseenko counted on 15.Bxe5 Nxe5 16.Qxe5 0-0 17.Nc4 Rc5 with d5, but Najer with spectacular sacrifice of a piece breaks Black's redoubt.] **15...exf4** [15...0-0 16.Nxe5 (16.Bh6 Bf6 17.Nd6 also good) 16...Nxe5 17.Bxe5 f6 18.Bg4! fxe5 19.Rxd7+–] **16.Qxg7 Rf8 17.e5** That's the whole point. ♘ is heading to d6, and if it will be taken – black king will be mated from line "e". **17...Nxe5?!** [That's hopeless – now Najer will be with extra material and strong attack. So, it's worth to hold teeth and play 17...Qc7 18.Bg4 (18.Nd6+ Kd8 19.Bg4 f5!) 18...Nb8 19.Nd6+ Kd8 – White is still able to make a mistake.] **18.Qxe5 d5 19.Qxf4 Rc6** [19...Qc7 20.Ne5] **20.Ne3**



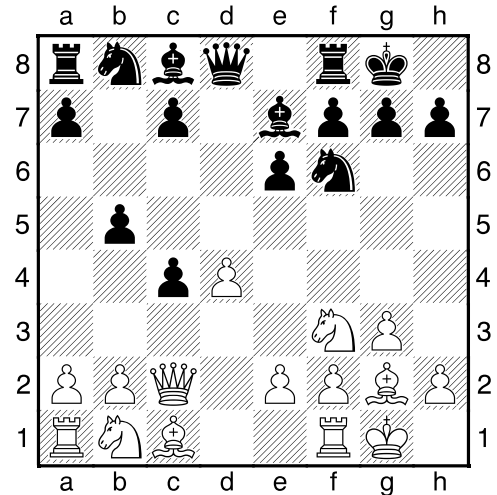
♗d5 is doomed, so Najer is gonna play with two extra pawns soon. **20...Rg6 21.Bf3 Bd6 22.Qd4 Rfg8 23.Bxd5 Bc8 24.Qc4 R8g7 25.Rd4 Kf8 26.Rad1 Rh6 27.g3** Not giving any chance for the opponent. **27...Bd7 28.Be4 Rxe2!?** Dying the death of a hero. **29.Rxd6** [29.Kxh2 Qh4+ 30.Kg1+–] **29...Qh4 30.Rxd7 Rxe2 31.fxe2 Qxe2 32.Ng2 1-0**

**(08) Maletin, P (2584) – Zontakh, A (2568) [E06]**

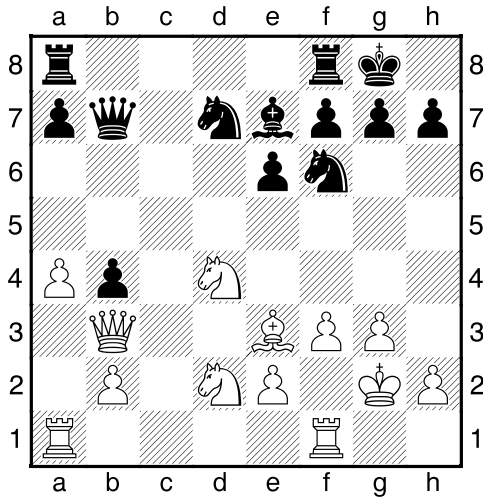
TCh–RUS Premier Olginka RUS (5), 16.04.2011

[Polivanov, Anatolij]

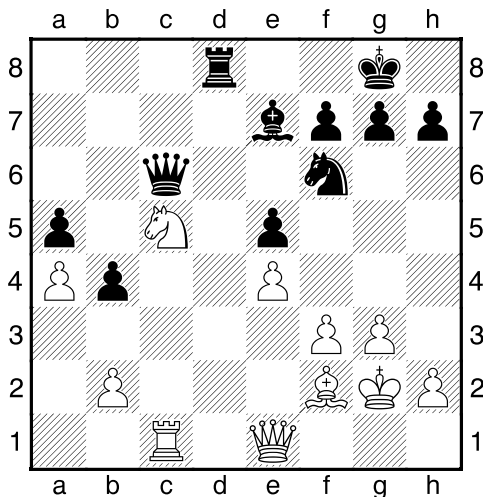
**1.d4 d5 2.c4 e6 3.Nf3 Nf6 4.g3 Be7 5.Bg2 0-0 6.0-0 dxc4 7.Qc2 b5!?**



[This is almost a revelation. Usually applies 7...a6 8.Qxc4 b5 9.Qc2 Bb7; I have tried recently 7...c6 8.Qxc4 b5 9.Qc2 Bb7, though after 10.Bg5 Nbd7 11.Rd1 Rc8 12.Nc3 a6 13.e4 b4 14.e5! White is better, Beliavsky–Polivanov, Moscow 2011.] **8.a4 b4** [All books about Catalan mention 8...c6? 9.axb5 cxb5 10.Ng5+–, but Zontakh is not so naive.] **9.Nbd2N** [Earlier met 9.Ne5 Nd5 10.e4?! (N0.Nxc4) 10...b3! 11.Qd1 Nb4 12.Na3 Ba6, Koshy–Ravikumar, New Delhi 1982] **9...Bb7 10.Nxc4 Be4 11.Qb3 c5** [There wasn't such necessity in this move – 11...Nc6 12.Rd1 Qd5 with good piece play is more than enough, but Black wants to open "c"–file for own ♖.] **12.Be3?!** [Decision to exchange white–squared bishops right now is not successful one. Better was to maintain the tension by means 12.Rd1 ] **12...cxd4 13.Nxd4 Bxe2 14.Kxe2 Qd5+ 15.f3 Nbd7 16.Nd2?!** [Very passive again – line "d" is destined for the ♖! **16...Rfd1 Rac8 17.Rac1 Nc5 18.Qc2** with approximate equality.] **16...Qb7**

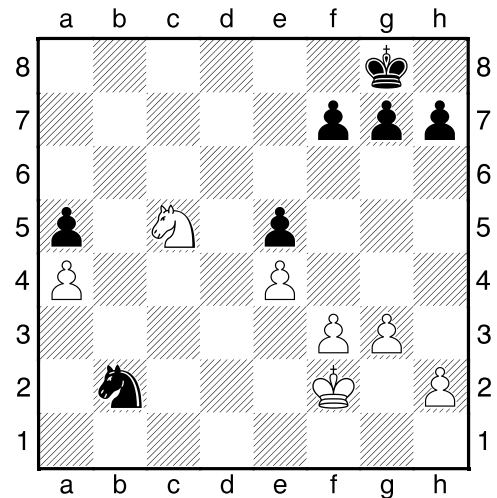


Of course, it's not the best time for end-games. **17.Rfc1 Rac8 18.Bf2 Nc5 19.Qd1 Rfd8!** Using drawbacks of 16.Nd2. White's position is becoming worse and worse... **20.Qe1 e5?! [How is it possible not to play 20...Ng4 ?! After 21.N2b3 (21.Bg1 Bg5!) 21...Nxf2 22.Qxf2 Nxb3 23.Nxb3 Bg5** Black is evoking new weaknesses in enemy camp.] **21.N4b3 Nxb3 [I don't think, that improving of  $\text{Nd2}$  is a good idea, worth to prefer 21...Ne6 ] 22.Nxb3 Rxc1?! [22...e4! is suggesting itself, but Black adheres a policy of exchanges.] 23.Rxc1 Qd5 24.Nc5 a5 25.e4** Otherwise Black will move e4 oneself. **25...Qc6**

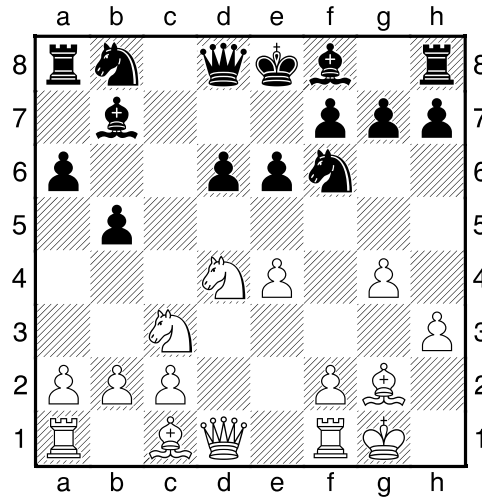
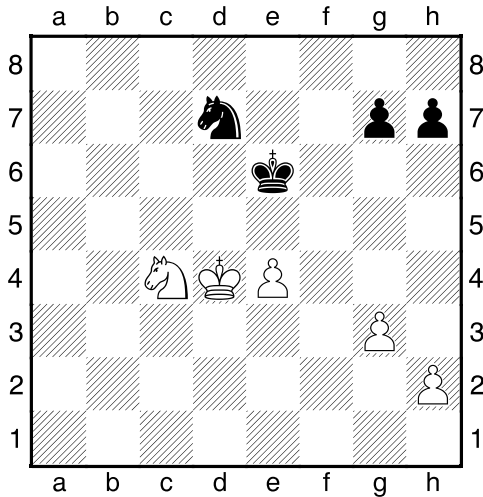


**26.Qe2** Now White's position is slightly better again, so Black has to play very carefully. **26...Nd7 27.Qa6 [This is correct decision - 27.Qb5 Qxb5 28.axb5 Rc8**

**29.Nb3 Rxc1 30.Nxc1** leads to the draw because of 30...a4! 31.b6 b3 32.b7 a3 33.Nxb3 axb2 34.Nd2=] **27...Rc8 28.Qxc6 Rxc6 29.Nb3 Rxc1 30.Nxc1 Bc5 [Black could with a clear conscience play 30...Nc5 31.Bxc5 Bxc5 32.Nb3 Bb6 33.Kf1 Kf8 34.Ke2 Ke7 35.Kd3 Kd6 36.Kc4 Kc6= , however, this is a very passive stance.] 31.Nb3 Bb6 32.Bxb6 Nxb6 33.Nc5 b3! Because, as in the case with 25.e4, White could do it himself differently. 34.Kf2 Nc4 35.Nxb3 Nxb2 36.Nc5**



**36...Kf8?** [Black takes a false step, when draw already was in his pocket: 36...f6 37.Ke2 Kf7 38.Kd2 Ke7 39.Kc3 Kd6!]=] **37.Nd7+ Ke7 38.Nxe5 Nxa4 39.Nc6+ Ke6 40.Nxa5** If we recall a well-known sentence, that  $\text{K}$  ending is estimated as  $\text{K}$  one, then we can make a conclusion, that Black doesn't have even slightest chance there. **40...f5 41.Ke3 Nb6 42.Kd4 Nd7 43.Nc4 fxe4 44.fxe4**



Maletin has a clear plan – to push  $\triangle e4$  as far as possible, constraining Black at the same time. **44...Nf6 45.Nd2 Nd7 46.Nf3 h6 47.e5 g5** [Black could try to prevent above-mentioned plan by 47...Kf5, but after 48.Kd5 Nb6+ 49.Kc5 Nc8 50.Kc6 Ke6 51.g4! king is going back to e4.] **48.g4 Nf8 49.Ke4 Ng6 50.Nd4+ Ke7 51.e6 Kf6 52.Kd5 Ne7+ 53.Kd6 Nc8+ 54.Kc7 Ne7 55.Kd7  $\triangle e6$  is about to become the queen. 55...Nd5 56.Nf5 Nb6+ 57.Kc6 Nc4 58.e7 Ne5+ [58...Kf7 59.Nd6+] 59.Kd5 1-0**

**(09) Nepomniachtchi,I (2729) - Frolyanov,D (2610) [B90]**

TCh-RUS Premier Olginka RUS (6),  
17.04.2011

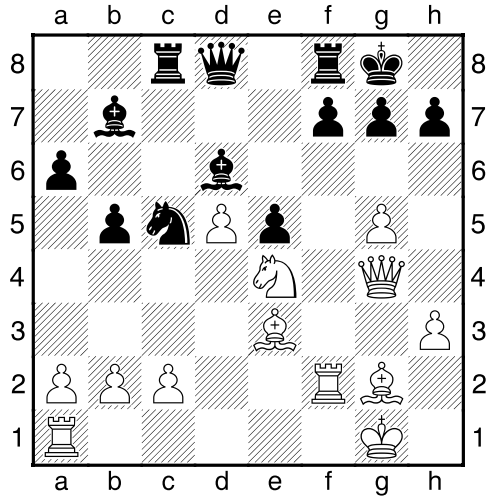
[Polivanov,Anatolij]

**1.e4 c5 2.Nf3 d6 3.d4 cxd4 4.Nxd4 Nf6 5.Nc3 a6 6.h3** This system was introduced in practice by Robert Fischer in 1960s. Now it gains a second wind. **6...e6 7.g4** The idea of such setup is the same as in 6.g3 variation – white's bishop fianchetto, but in a more aggressive, Keres-like way. **7...b5 8.Bg2 Bb7 9.0-0!**

[It's considered before, that 9.a3 is indispensable, but now views have changed a little.] **9...Nfd7** [Practice has shown, that after 9...b4 10.Nd5! exd5 11.exd5 Be7 12.g5 Nfd7 13.Nc6 Qc7 14.Nxe7 Kxe7 15.Qd4 White is developing a dangerous initiative: 15...f6 (stronger, than 15...Kf8 16.Bf4 a5 17.Rfe1 Nb6 18.Re8+!, Nakamura-Ninov, FRA-chT 2008) 16.Re1+ Kd8 17.Qxb4 Ne5 18.f4 Nc4 19.b3 Qb6+ 20.Qxb6+ Nxb6 21.Re6 Kc7 22.c4, Parligras-Kurnosov, Bucharest 2008.; 9...Be7? 10.e5+-; that's why Frolyanov takes  $\triangle f6$  away.] **10.f4 Be7 11.f5!N** [11.Be3 0-0 12.Qd2 Nb6 13.b3 N8d7] **11...e5 12.f6!!** Beautiful idea – at the cost of  $\triangle$ , White is getting hold of square f5 for the  $\triangle$ , and file "f" for the  $\triangle$ . **12...Nxf6** [12...exd4 13.fxe7 Qxe7 14.Qxd4 Ne5 15.a4±] **13.Nf5 0-0 14.g5 Ne8 15.Qg4** White's plan is clear – to double rooks, after which sacrifices like Nh6+ are gonna explode. Black has to invent something. **15...Nd7 16.Be3!** It's important to start with this move, preventing Nb6 and d5. **16...Rc8 17.Rf2 d5?** Trying to neutralize  $\triangle f5$ , Black doesn't realize, that another knight on e4 will be even more dangerous. [17...g6!? 18.Nh6+ Kg7 was a decent effort to get a relief: 19.Raf1 a) 19.Nxf7?! Rxf7 20.Rxf7+ Kxf7 21.Rf1+ Kg7 (21...Nef6 also good) 22.Qe6 Nef6 23.gxf6+ Nxf6; b) 19.a4 b4 20.Nd5 Bxd5 21.exd5 f5 22.gxf6+ Nexf6 23.Qxb4 19...f6 20.Nf5+! Kh8 (20...gxf5 21.gxf6+ Kh8 22.fxe7 Qxe7 23.Rxf5±) 21.Nxe7 Qxe7, and Black's po-



sition is solid enough.] **18.exd5 Nd6**  
**19.Nxd6 Bxd6 20.Ne4 Nc5?**



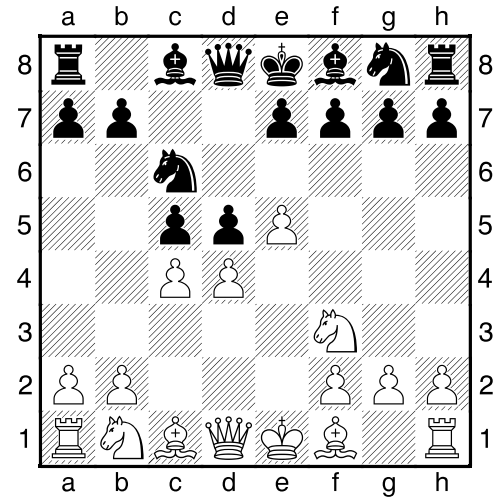
[~~20~~...Bc5 ; now Nepomniachtchi wins in a forced way.] **21.Nf6+! Kh8 22.Qh5 gxf6**  
**22...h6 23.Ng4+-] 23.Rxf6 Rg8** The only defence from 24.Rh6; besides, in this position (only in case 20...Bc5 21.Bxc5 Nxc5 22.Nf6+) now powerful Ne6!! would have come. **24.Rxf7 Rg7 25.Rxg7 Kxg7 26.g6!** Black king's shelter is destroyed totally. **26...hxg6 27.Qh6+ Kg8 28.Qxg6+ Kh8 29.Rf1 Bf8 30.Rf7 Qh4 31.Bg5 1-0**

**(10) Bruzon Batista,L (2668) - Yermolinsky,A (2530) [B12]**

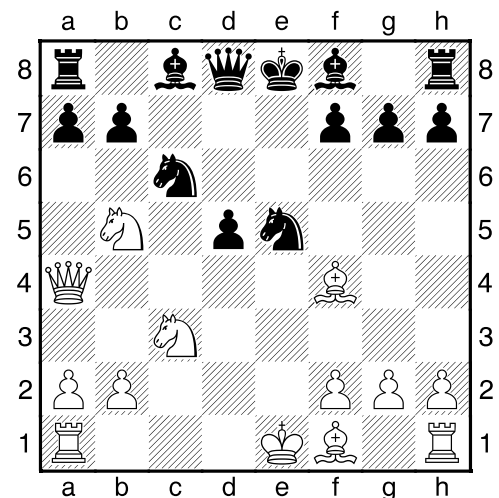
ch–Americas Continental Toluca MEX (5), 22.04.2011

[Polivanov,Anatoliy]

**1.e4 c6 2.d4 d5 3.e5 c5** Black wants to play some kind of Caro–French, only bishop c8 can be unlocked in some lines. **4.Nf3** [4.dxc5 e6 5.Be3 Nh6!≡] **4...Nc6 5.c4**



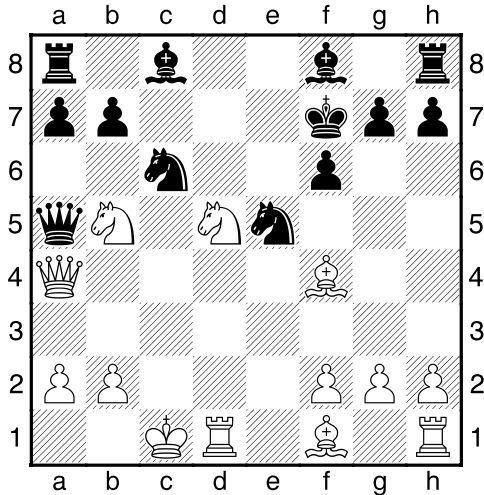
Very unpleasant response. Using, that center is slightly weakened after 3...c5, White immediately strikes back.**5...e6** [5...Bg4 is dubious: 6.cxd5 Bxf3 (6...Qxd5 7.Nc3 Bxf3 8.Nxd5 Bxd1 9.Nc7+ Kd8 10.Nxa8+-) 7.Qxf3 Nxd4 8.Qd1 Qxd5 9.Bb5+ Kd8 10.0-0 e6 11.Nc3 Qxe5 12.b4!≡ , Sutovsky–Miladinovic, Plovdiv 2008; 5...cxd4 6.Nxd4 e6 leads to the same, as in the game(6...Nxe5 7.cxd5±) ] **6.Nc3 cxd4 7.Nxd4 Nge7** [Seems, like after this game the line 7...Nge7 can be announced to be closed. Black should be oriented on 7...Bb4 8.Nxc6 bxc6 9.Bd3 Ne7] **8.Ndb5! Nxe5** **9.Qa4 N7c6** [9...N5c6 10.Bf4 e5 11.Bxe5+- , Dos Santos–Pina Gomez, Villa Martelli 2010] **10.cxd5 exd5 11.Bf4!?**N



[Good novelty, though straightforward

11.Nxd5 also all right: 11...Bd6 12.Be3 Bg4 (12...0-0 13.0-0-0±) 13.f4 0-0?! (too harsh, but after 13...Ng6 14.h3 White is better anyway) 14.fxe5 Nxe5 15.Be2 Bc5 16.Rd1!+-, Hillarp Persson-Willemze, Hoogeveen 2007] **11...f6?** [11...Bd7 isn't enough - 12.Nxd5 Rc8 13.Bxe5 Nxe5 14.Qe4 Be6□ 15.Rd1 Nd7 16.f4! g6 17.Bc4 with lethal threat Ndc7; 11...Bc5!! 12.Bxe5 0-0 was the perfect chance to find the happiness. White has to be exact, otherwise something bad could happen: 13.Bg3?! (~~13.Bc7~~ Qe7+ 14.Be2 Re8 15.Qf4) 13...Re8+ 14.Be2 d4 15.Rd1 Qe7! (15...Bd7 16.Qc4+-) 16.Nxd4 (16.Rxd4 Nxd4 17.Nxd4 Bd7 18.Qc4 Bxd4 19.Qxd4 Bb5-+) 16...Nxd4 17.Rxd4 b5!→] **12.Nxd5 Kf7**□ **13.0-0-0 Qa5**

**14.Qb3!** [Bruzon is trying to extract more benefit, than in case of 14.Qxa5 Nxa5 15.Ndc7 Rb8 16.Nxa7 Bc5 17.Nab5±] **14...Be6 15.Bxe5 Nxe5** [15...fxe5 16.Bc4] **16.f4! Rc8+** [16...Ng4 17.f5+- ; but 16...Rc8+ hardly changes anything.] **17.Nbc3 Nd7 18.f5 Rxc3+□ 19.Qxc3 Qxc3+ 20.Nxc3 Bxf5 21.Bc4+ Kg6 22.g4!** The most concrete path to finish the game. **22...Bxg4 23.Rhg1 Ne5 24.Be2** After h3 White will play with extra piece, that's why Yermolinsky resigned. **1-0**



**Editorial staff:**

IM Anatoliy Polivanov (ELO 2356)  
 IM Tarlev Konstantin (ELO 2478)  
 IM Sergey Perun (ELO 2345)

Chief editor Roman Viliavin (ELO 2248)  
 email: [chesszone@ya.ru](mailto:chesszone@ya.ru)