

# ChessZone Magazine



## Table of contents: # 04, 2012

Games .....	4
(01) Fier,A (2573) - El Debs,F (2477) [D31] .....	4
(02) Kovalev,VI (2453) - Sjugirov,S (2622) [C41] .....	6
(03) Anand,V (2817) - Eljanov,P (2683) [D31] .....	8
(04) Popov,Iv RUS (2605) - Caruana,F (2767) [B33].....	11
(05) Malakhov,V (2705) - Timofeev,Arty (2650) [A34] .....	12
(06) Mastrovasilis,A (2510) - Salgado Lopez,I (2621) [E52] .....	14
(07) Jobava,Ba (2706) - Fridman,D (2653) [D35] .....	16
(08) Edouard,R (2607) - Fridman,D (2653) [B12].....	18
(09) Cheparinov,I (2664) - Sjugirov,S (2610) [E15].....	20
(10) Giri,A (2717) - Zontakh,A (2556) [E11] .....	22
Editorial staff:.....	24

**Dear readers!**

**ChessZone Magazine is open for your advertising materials.  
We have various ad packages at affordable rates!**

**We're also interested in cooperation with advertising agencies,  
and could offer great commissions for anyone  
who could bring an advertisers to us.**

**Please contact us for details**

**[chesszone@ya.ru](mailto:chesszone@ya.ru)**

## Games

**(01) Fier,A (2573) - El Debs,F (2477)**

**[D31]**

78th ch-BRA Campinas BRA (3),

12.12.2011

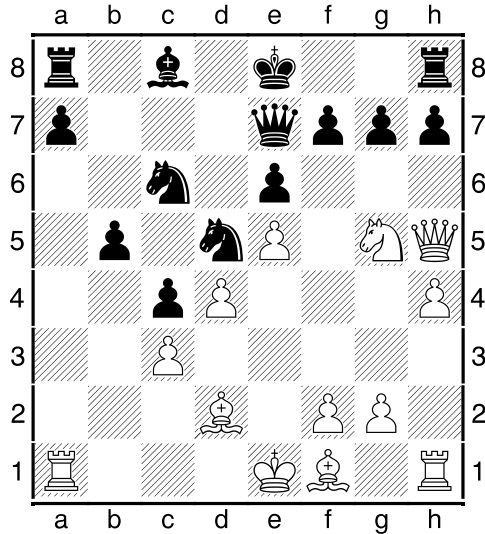
[IM Iljin, T]

1.d4 d5 2.c4 c6 3.Nf3 Nf6 4.Nc3 dxc4

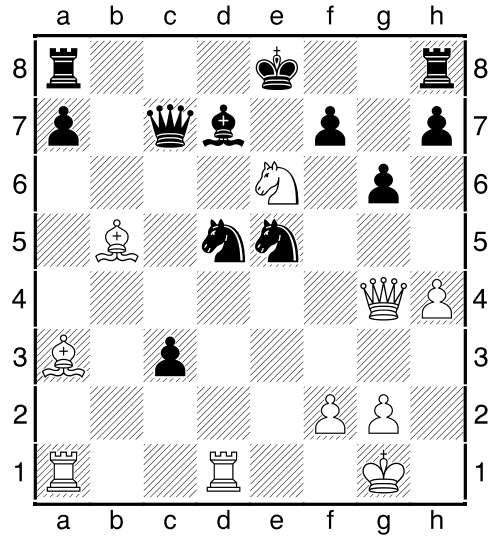
5.a4 e6 6.e4 Bb4 7.e5 Nd5 8.Bd2 b5

9.axb5 Bxc3 10.bxc3 cxb5 11.Ng5 Nc6

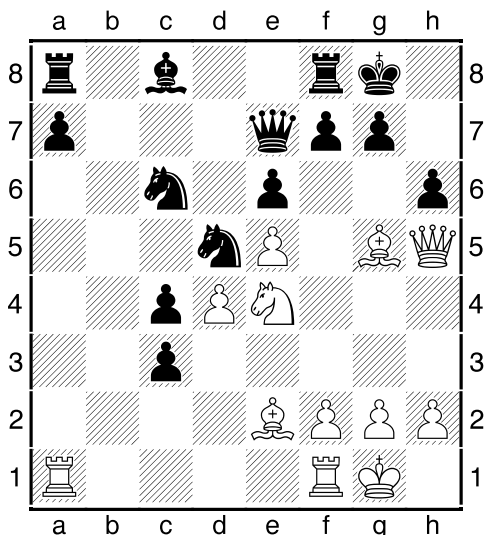
12.Qh5 Qe7 13.Be2 Worthy of attention the multi-purpose move [13.h4!



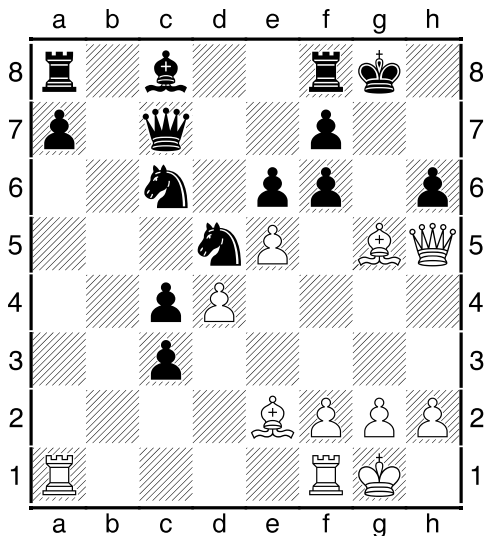
reinforcing the knight, and planning, in the case, the inclusion of the h1- rook to the third horizontal. 13...b4 14.Bxc4 bxc3 15.Bc1 Nxd4 16.0-0 h6 (The attempt 16...Qc7 bring only disappointment to black: 17.Rd1 g6 18.Qg4 Nc6 (more resistant is 18...Qxc4 but here is still a good chance for white to develop a devastating attack: 19.Rxd4 Qc7 20.Ba3! Qxe5 21.Qd1! f6 22.Re4 c2 23.Qe1 Qc3 24.Rxe6+!+-) 19.Ba3 Nxe5 20.Bb5+ Bd7 21.Nxe6!



21...Qb7 22.Bxd7+ Qxd7 23.Ng7+ What a terrible crush! 1-0 Gupta, A – Sumets, A, 28.11.2011)) 17.Bxd5! (17.Ba3 leads to a forced draw: 17...Nf4! 18.Qg4 hxg5 19.Bxe7 Rxh4 20.Qd1 c2! 21.Qd2 , and here we have the twin options with perpetual check: 21...Nf3+ (or 21...Nh3+ 22.Kh2 Nf4+ 23.Kg1 Nh3+) 22.gxf3 Nh3+ 23.Kg2 Nf4+=) 17...exd5 18.Ba3 Qc7 19.e6 Bxe6 20.Nxe6 Nxe6 21.Qxd5 Rd8 22.Qb3→ with very strong attack because the black's king stuck in the center for a long time.] **13...b4 14.0-0 bxc3 15.Bc1! h6** [Black had to decide on 15...Nxd4 16.Bxc4 h6 17.Ne4 0-0 18.Ba3 Qc7!! (18...Nb4? 19.Rfc1 Bb7 20.Nf6+! Kh8 21.Rxc3 Rad8 22.Bd3 a5 23.Bc1!+-) 19.Bxf8 Nf4 20.Qg4 Kxf8 21.Nd6 g5□ 22.g3 Bb7 23.Nxb7 h5! 24.Qd1 Qxb7 25.gxf4 Nf3+ 26.Kh1 Nd2+ 27.Kg1 Nf3+ and draw by perpetual.] **16.Ne4 0-0 17.Bg5!?**

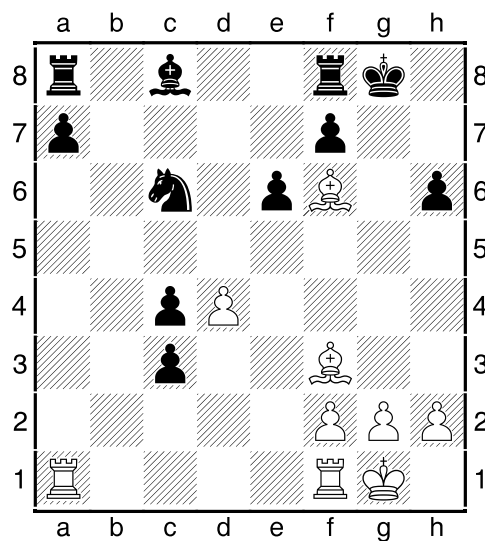


Showy, bright move, that probably shocked the opponent. [17.Ba3!?, 17.Bxc4!?] **17...Qc7** [17...f6!? 18.exf6 Qf7 19.fxg7 Qxh5 20.gxf8Q+ Kxf8 21.Bxh5 hxg5 and to win is not so easy.] **18.Nf6+! gxf6**



**19.exf6?!** Here it is clearly bad bargain for white. [Almost insoluble problems bring the move 19.Bxh6! Nce7 20.Bf3! (20.exf6!? Ng6 21.Bg5 Nxf6 (21...Qd8 22.Bf3 Bb7 23.Qh6 Nxf6 24.Bxb7 Qxd4 25.Rad1 Qe5 26.Rde1! Qf5 (26...Qd4 27.Rxe6!+-) 27.h3! Nh7 (27...e5 28.f4) 28.h4! Ne5 29.Be4 Ng4 30.Bxf5 Nxh6 31.Bxh6 exf5 32.Bxf8 Nxf8 33.Rc1+-) 22.Bxf6 Qf4 23.Bg5 Qxd4 24.Rad1 Qh8 25.Qf3 c2 26.Rc1 Rb8 27.Rxc2 Bb7 28.Qe3!)

20...Ng6 (20...Rd8 21.exf6 Ng6 22.Bg5 Qd6 23.Be4 Ndf4 24.Qh6 Qf8 25.Qxf8+ Kxf8 26.Bxa8 Ne2+ 27.Kh1±) 21.Bxf8 Kxf8 22.Bxd5! exd5 23.exf6 Be6 (23...Qd6 24.Rae1 Be6 25.f4 Kg8 26.f5 Bxf5 27.Rxf5+-) 24.Rae1!! Qb6 25.Kh1! Qd8 26.Rxe6 fxe6 27.Qxg6 Qc7 28.Re1 c2 (28...Rb8 29.Rxe6! Qf7 30.Qh6+ Kg8 31.g4 c2 32.Re5! Rb1+ 33.Kg2 c1Q 34.Re8+ Qxe8 35.Qg7#) 29.Qh6+ Kg8 30.Re5+- and white put the bullet.] **19...Nxf6 20.Bxf6 Qf4** now white forced to go into the almost equal endgame **21.Qf3 Qxf3 22.Bxf3**



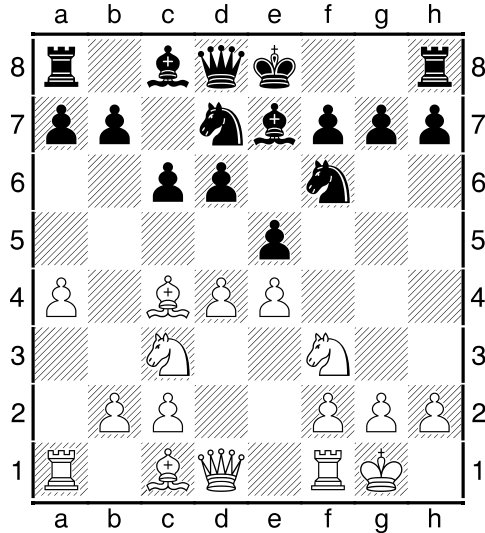
**22...Bd7?!** Too passive! [22...Bb7! 23.Rfc1 (23.Rab1 leads to a very sharp position: 23...Rab8! 24.Rxb7 Rxb7 25.Bxc6 Rb3 26.Be4 Rfb8 27.Rc1 (27.Ra1? Rb2 28.Kf1 c2 29.Re1 a5) 27...Rb2 where the most likely outcome is a draw.) 23...c2! 24.Rxc2 Nb4 25.Rxc4 Bxf3 26.Rxb4 Bd5 27.Rba4 Kh7 28.Rxa7= and such extra pawn can not turn into something real.] **23.Rfc1 Rab8?!** [23...e5! 24.Rxc3 Nxd4 25.Bh5 Rfe8 26.f4 Nf5 and white's advantage may not be enough to win] **24.Rxc3 Rb3 25.Rxc4 Rfb8 26.h3 Rb1+ 27.Rc1 Rxc1+** [27...Rxa1! 28.Rxa1 a5] **28.Rxc1 Rc8?!** [28...a6!? 29.Rc5 Rb5] **29.Rc5! Kf8 30.Rh5! Ne7 31.Rxh6 Ng8 32.Rh8 Bc6 33.Bxc6 Rxc6 34.h4** March of a brave soldier can not be stopped by any means. **1-0**

**(02) Kovalev,VI (2453) - Sjugirov,S (2622) [C41]**

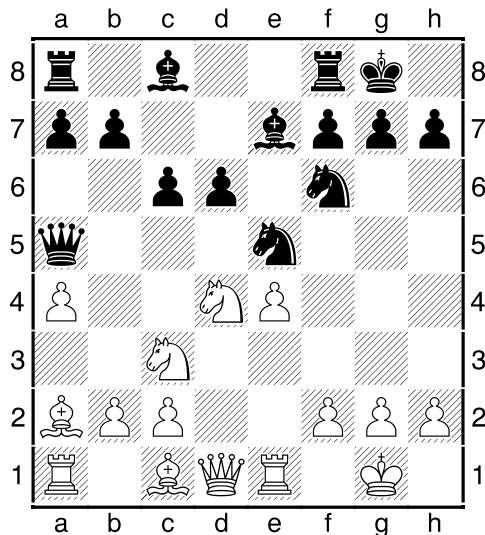
Moscow Open 2012 A Moscow RUS (5.24), 01.02.2012

[IM Ijgin, T]

**1.e4 d6 2.d4 Nf6 3.Nc3 e5 4.Nf3 Nbd7 5.Bc4 Be7 6.0-0 c6 7.a4**

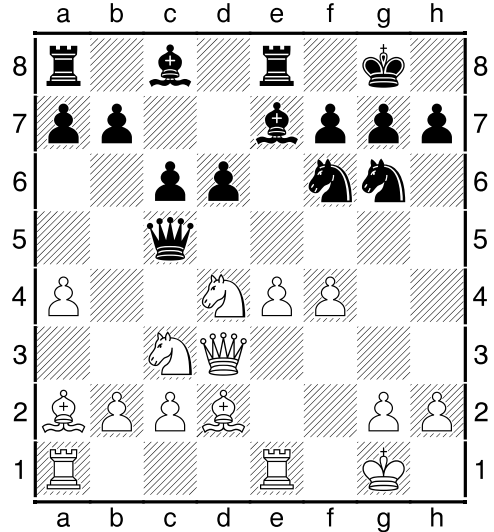


**7...Qa5** This is a typical computer's move. To my mind, it is wasting of time. The a5-square is for the black pawn, not for Queen in this position. [7...0-0 8.Re1 a5] **8.Ba2 0-0 9.Re1 exd4 10.Nxd4 Ne5**

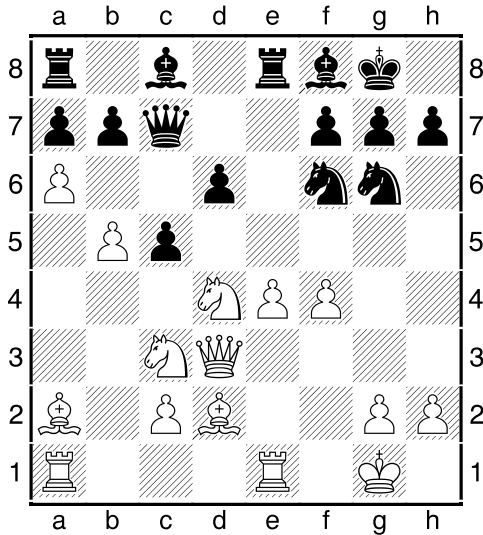


[After 10...Nc5 11.Bd2 Qc7 12.b4 Ne6 13.Nf5] Black has to lose a couple of tempos.] **11.f4! Ng6** [The attempt 11...Qc5 can't improve black's position. His queen

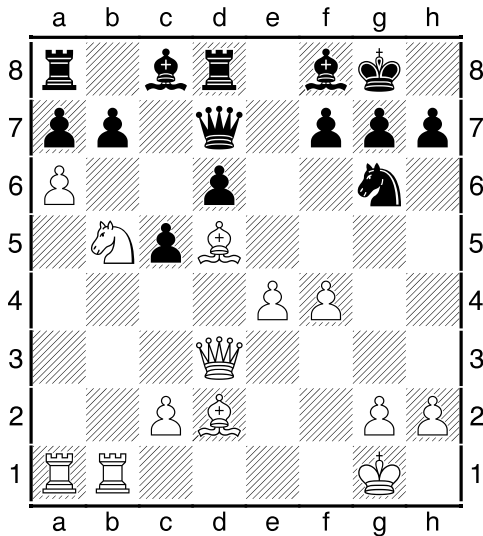
only interferes to the 'subjects': 12.a5 Ng6 13.h3 d5 14.Be3 Nxe4 15.Nxe4 dxe4 16.Ne6 Qf5 17.Nxf8 Nxf8 18.Qd4! Bf6 19.Qb4±] **12.Qd3! Re8 13.Bd2** Now the bishop unpleasantly looks at the black Queen, so she has to get away: **13...Qc5?!**



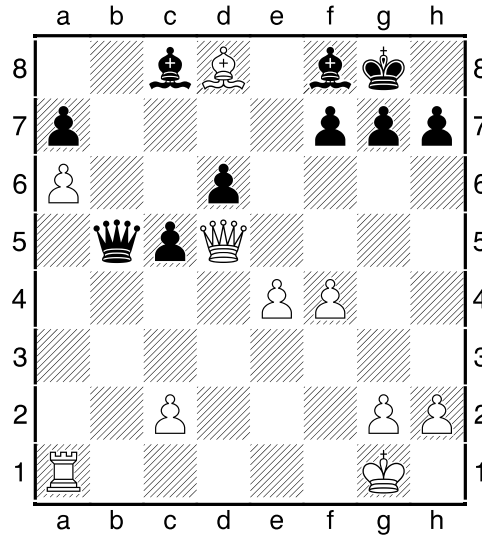
bad 'parking' for the Queen. [The Queen's reassignment to another area does not promise a good life: 13...Qh5 14.a5! Nh4 (In case of 14...Bd8 15.b4 Bd7 16.Nce2 Nxe4 17.f5 suddenly it becomes clear that black loses a knight, in view of the threat of the knight's lunge on f4.) 15.a6!?! (Also good is 15.Nce2 d5 16.Ng3 dxe4 17.Rxe4 Qg6 (17...Qc5 18.Rae1! Nxe4 19.Nxe4 Qh5 20.Nd6!+-) 18.Rxe7 Rxe7 19.f5! Qg4 20.c3 Bxf5 21.Ndxf5 Nxf5 22.Qxf5 Qxf5 23.Nxf5 Re2 24.Bf4 Rxb2 25.a6 with the slight advantage in the endgame.) 15...Bd8 16.Nce2 Bb6 17.Ng3 Qg4 18.Kh1! bxa6 19.h3 Qd7 20.f5 d5 21.e5 Bxd4 22.Qxd4 Ne4 23.Nxe4 Nxf5 24.Qf2 dxe4 25.e6 fxe6 26.Bc3± Very good picture!; Lesser of two evils is a modest 13...Qc7!? without causing a fire.] **14.b4! Qb6 15.a5 Qc7 16.b5!** Right! If rival makes it possible to attack, we must use this chance! **16...Bf8 17.a6! c5**



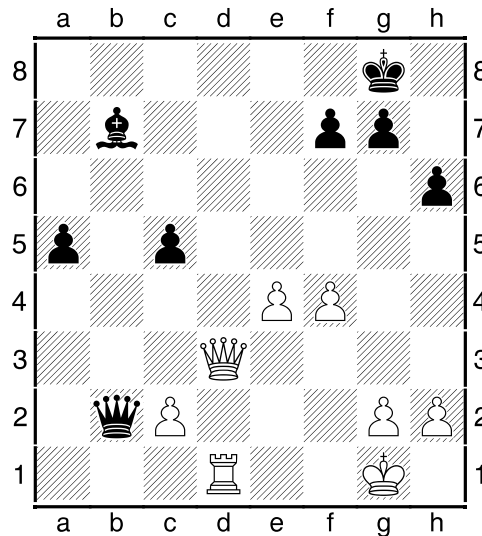
**18.b6! Qxb6** [18...axb6 19.Ndb5 Qc6 20.a7 Bd7 21.Bc4± and black is completely clamped.] **19.Reb1 Qc7 20.Nd5 Nxd5 21.Nb5 Qd7 22.Bxd5 Rd8**



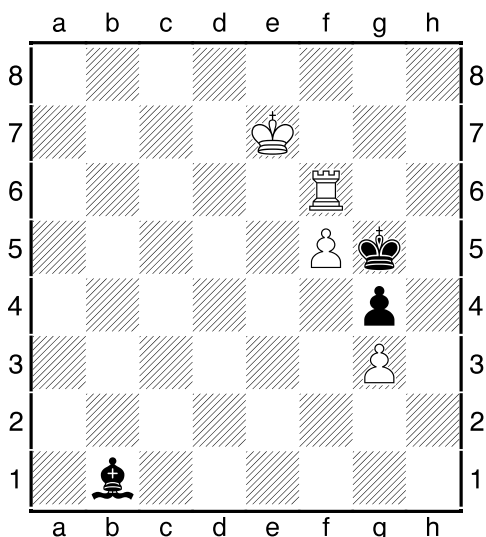
**23.Qb3** White brilliantly played the first part of the game, but here is a little 'overcomplicated'. [The 'unpretentious' knight's retreat just ended up fighting: 23.Nc3! after which he could win at least a piece: 23...Rb8 24.axb7 Bxb7 25.Rxa7 и т.д.] **23...Ne7 24.Ba5 b6 25.Bxb6! Nxd5 26.Qxd5 Rb8 27.Bxd8 Rxb5 28.Rxb5 Qxb5**



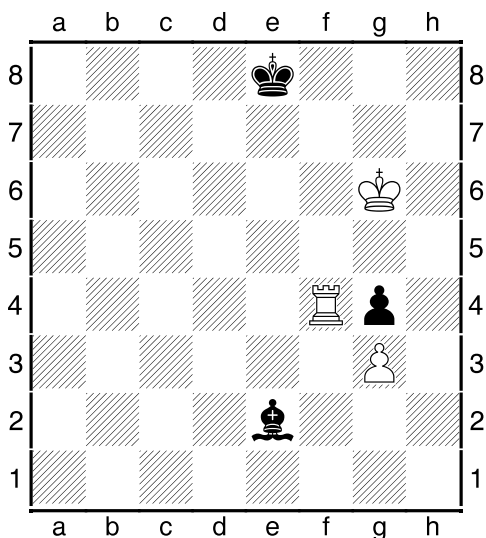
**29.Bc7** [29.Qa8! Qd7 30.Bh4+- and it is easy to see that black should 'hang up skates on a nail'.] **29...Bxa6** [In event of 29...Be6 30.Qd1 Qc6 31.Bb8 Bc4 32.e5 dxe5 33.fxe5 Be7 34.Qf3 Bd5 35.Qe2+-] **30.Bxd6 Bb7 31.Qe5 Bxd6 32.Qxd6 h6 33.Qd3 Qb2 34.Rd1 a5**



**35.Qb3** The most reliable move. After the exchange of queens, all of black's illusions evaporate. **35...Qxb3 36.cxb3 Bxe4 37.Rc1 Bd5 38.Rxc5 Bxb3 39.Rxa5 f6 40.Kf2 g5 41.f5 h5 42.g3 g4 43.Ke3 Kg7 44.Kf4 Bc4 45.Ke4 Bb3 46.Kd4 Bc2 47.Rc5 Bb1 48.Rd5 Kh6 49.Kc5 Kg5 50.Kd6 h4 51.Ke7 hxg3 52.hxg3 Ba2 53.Rd6 Bb1 54.Rxf6**



Of course, white has a winning position. His plan is simple: the king and rook work together to drive away the black monarch, and then, in good time, pick up a pawn.  
**54...Bxf5 55.Rf8 Be4 56.Ke6 Bf3 57.Rg8+ Kh6 58.Kf6 Kh7 59.Rg7+ Kh6 60.Rd7 Be4 61.Rd8 Kh7 62.Kg5 Bf3 63.Rd7+ Kg8 64.Kh6 Be2 65.Kg6 Kf8 66.Rf7+ Ke8 67.Rf4!**



1-0

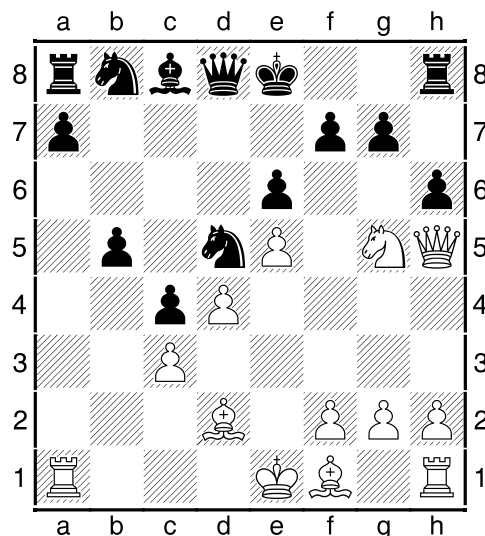
**(03) Anand,V (2817) - Eljanov,P (2683) [D31]**

Schachbundesliga 2011-12 Bremen GER (12), 17.03.2012

[IM Iljin, T]

**1.d4 d5 2.c4 c6 3.Nf3 Nf6 4.Nc3 dxc4**

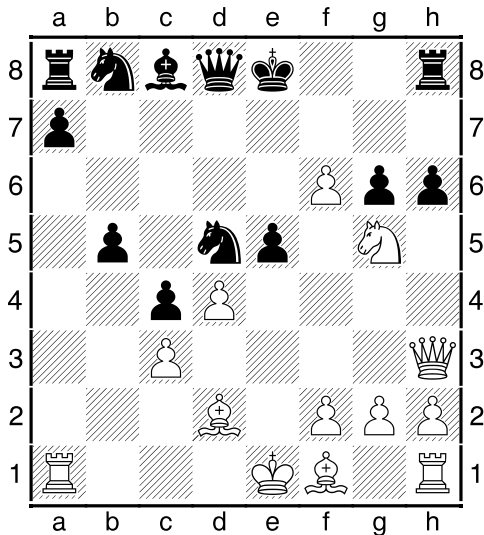
**5.a4 e6 6.e4** This is, to my mind, the most natural and powerful move, first applied in practice by the famous World Chess Champion Alexander Alekhine, who played bright games and never afraid to sacrifice material for the initiative! [Modern 'seasoned' professionals prefer to play solid 6.e3 which leads us to 'dry' and 'boring' positions like the Queen's Gambit Accepted. Here is an example: 6...c5 7.Bxc4 Nc6 8.0-0 cxd4 9.exd4 Be7 10.Qe2 0-0 11.Rd1 Nb4 12.a5 a6 13.Bg5 Bd7 14.d5 exd5 15.Bxd5 Nbx5 16.Nxd5 Nxd5 17.Rxd5 Bxg5 18.Nxg5 h6 19.Qd2 hxg5 20.Rxd7 Qf6 21.Rd1 Rfe8 22.Rxb7 Rad8 23.Rd7 Rxd7 24.Qxd7 Rb8 and finally black managed to draw in the rook's ending. Izzat, K (2319) – Smeets, J (2610), 21.03.2012.]  
**6...Bb4 7.e5 Nd5 8.Bd2 b5 9.axb5 Bxc3 10.bxc3 cxb5 11.Ng5 h6** [a serious alternative is 11...Nc6, which we consider in the game Fier – El Debs] **12.Qh5**



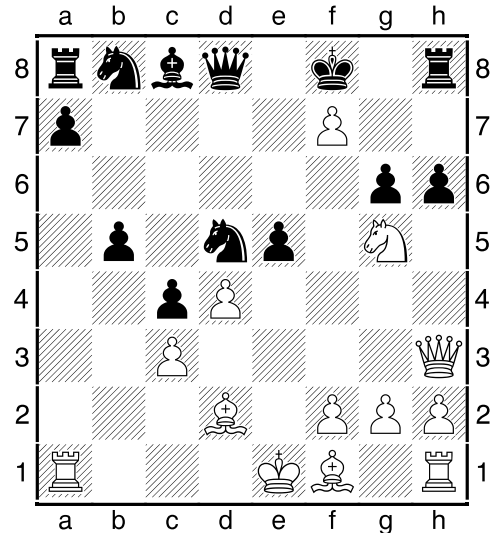
**12...g6?!** In my opinion, it's very risky option due to the serious attenuation of king-side's pawn structure. [More promising is 12...0-0 in the following puzzling game White passed through a lot of difficulties, but finally won the game: 13.Ne4 Nc6 14.h4 (if white has a peace-loving mood, he can complete the game with perpetual check: 14.Bxh6 gxh6 15.Qxh6 f5 16.Qg6+ Kh8 17.Qh6+=) 14...f5 15.Nd6 Bd7 16.Rh3 Be8! 17.Qd1 Qe7 (17...Na5! 18.Be2 Nb3) 18.g4! Rd8 19.g5 f4! 20.gxh6 gxh6



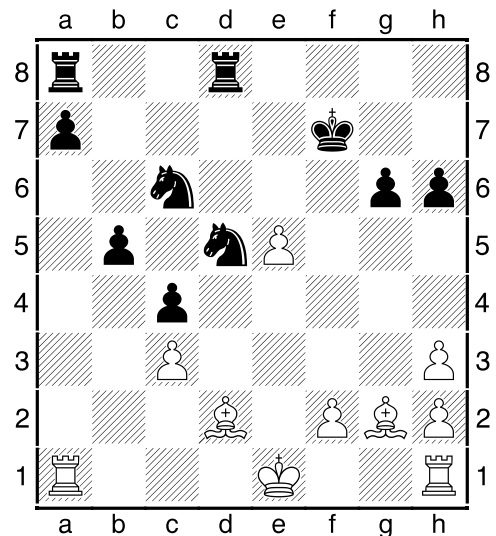
21.Nxb5 Nxe5 22.Rxa7 Qf6 23.Na3 Nd3+  
24.Rxd3?! cxd3 25.Bxd3 Qxh4 26.Qf3  
Matlakov, M (2632) – Bologan, V (2687),  
28.03.2012. It seems that in this compli-  
cated position Black could tip the scales in  
his favor: 26...Bh5! 27.Qe4 Nf6 28.Qg2+  
Qg5 29.Qxg5+ hxg5 30.Ra5 e5! 31.Rxe5  
Rfe8 32.Rxe8+ Rxe8+ 33.Kf1 Bf3!]  
**13.Qh3**  $\square$  f5 **14.exf6 e5**



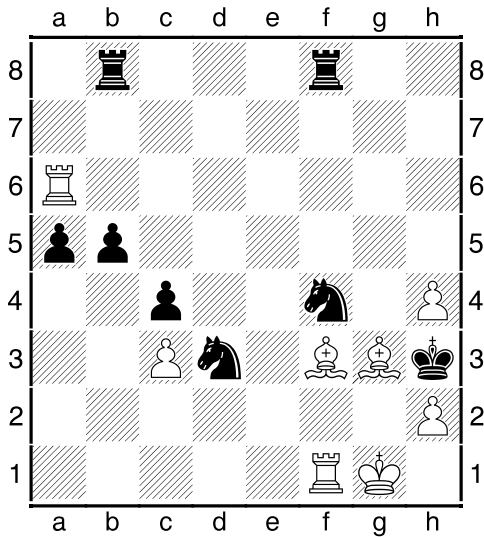
Honestly I do not believe that black can play so boldly, ignoring the development of the pieces. **15.f7+?** After this impulsive move the black's idea is fully justified. [At the same time, I could not find any acceptable defense for black after 15.g4! Bb7 (15...Nxf6 16.Bg2 Bxg4 17.Qe3 0-0 18.dxe5 hxg5 19.Bxa8 Nbd7 20.Rxa7 Nxe5 21.0-0 Nf7 22.Rb1 Re8 23.Qd4+-; 15...Qxf6 16.Ne4 Qe7 17.dxe5 Qxe5 18.Bg2 Na6 19.0-0 Nac7 20.Rfe1+-) 16.Bg2 Qxf6 17.Ne4 Qe7 18.dxe5 Qxe5 19.0-0+-, and the black king can 'neither hide nor flee'.] **15...Kf8!**



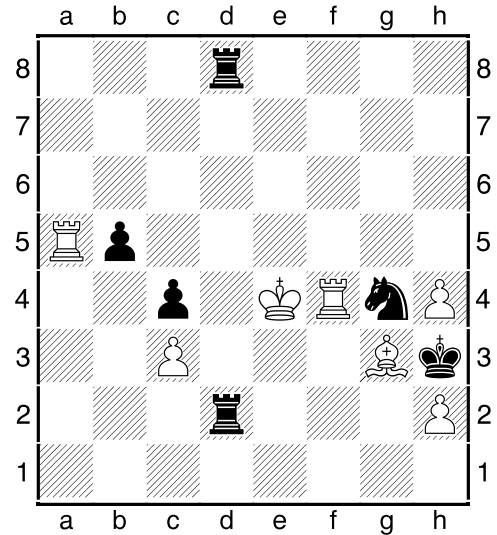
[15...Ke7?! 16.g4 Bb7 17.Bg2 Nd7 18.Ne4 Qc7 19.0-0] **16.Ne6+?** [even here 16.g4! gives an excellent opportunity to white, without going into the endgame, to attack the opponent's king, which has not 'built a hut' for himself during entire game. 16...exd4 17.Ne4 Kxf7 18.Bg2 Nc6 (18...Kg7 19.0-0 Nc6 20.Qg3 h5) 19.0-0 Kg7 20.Qg3f] **16...Ke7!** [White apparently build his calculations only on 'natural' 16...Bxe6? 17.Qxe6 exd4 18.Qxg6+- Qe7+ 19.Be2 dxc3 20.Bxh6+ Rxh6 21.Qg8#] **17.Nxd8 Bxh3 18.gxh3 Rxd8** In the current endgame white should play carefully because you can not joke with an avalanche of black infantry on the queenside. **19.dxe5 Kxf7 20.Bg2 Nc6**



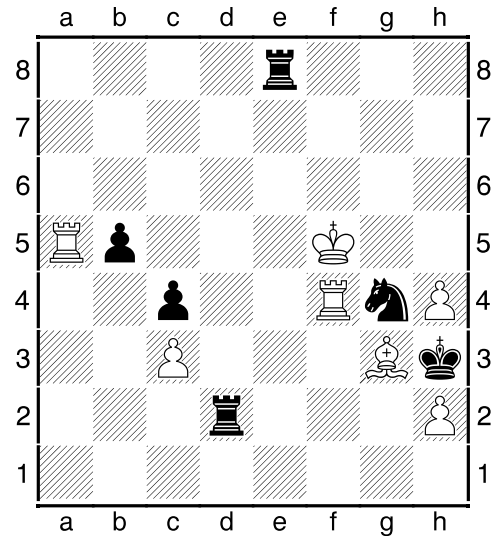
**21.0-0?!** White does not feel dangerous. He should immediately block the opponent's passed pawn: [21.Ra6 Nxe5 22.0-0 and the logical conclusion of the game would be a repetition of moves: 22...Nc7 23.Ra2 Nd5] **21...Nxe5** [In case of 21...a5! there would be a very unpleasant situation for white: 22.Rfe1 (22.f4 Ke6 23.h4 Nce7) 22...Kg7 23.e6 Nce7i] **22.f4!? Nd3 23.f5 gxf5** [23...g5 24.Ra6 N3f4 25.Bxf4 gxf4 26.Rfa1 Nxc3 27.Bxa8 Rxa8 28.Kg2 b4 29.Rxh6 b3 30.Raa6 b2 31.Rhf6+ Kg7 (31...Ke7?? 32.Rae6+ Kd7 33.Rf7+ Kd8 34.Rh6 Ke8 35.Rb7 with fast checkmate) 32.Rg6+ with the perpetual check.] **24.Rxf5+ Ke6 25.Rh5 a5 26.Rxh6+ Ke5 27.Be1!?** White tries to weave any network around the enemy king. **27...N5f4 28.Bg3 Kf5 29.Rf1 Kg5 30.Rb6 Rab8 31.Ra6 Rf8?!** [More secure is 31...Re8 32.h4+ Kg4 33.Bf3+ Kh3 34.Rxa5 Re3] **32.h4+ Kg4 33.Bf3+ Kh3**



Wow! The brave black king climbed almost to the 'lair' of his counterpart, but he can't disturb the white king, because there are too many guards around his opponent.) **34.Bd1?!** [Why not just pick up a pawn? 34.Rxa5! Rg8 35.Kh1 Rbe8 36.Rxb5 Rxg3 37.hxg3 Ne2 38.Bg2+ Kxg3 39.Rf3+ Kxh4 40.Rb7 with chances to win] **34...Rg8 35.Rf3 Rbd8 36.Kf1 Ne5 37.Rxf4 Rxd1+ 38.Ke2 Rgd8 39.Rxa5 R1d2+ 40.Ke3 Ng4+ 41.Ke4**



**41...Re8+** [Black misses a great opportunity: 41...b4! 42.cxb4 c3 43.Rc5 c2 44.Rxg4 Kxg4 45.Rg5+ Kh3 46.Rc5 Kg2! 47.Rc7 Re2+ 48.Kf5 Rd1 49.Bf4 Rf2 50.Ke5 Re1+ 51.Kd5 Rxf4 52.Rxc2+ Kh3-+ , and only a miracle could save white.] **42.Kf5**



**42...Ne3+** After this move the game is almost forcefully comes to a 'peaceful harbor'. [42...Rd5+! could put a serious problem to the rival: 43.Kg6 Ne5+ 44.Kf6 Rd7 45.Ra6 (After 45.h5 white gradually losses: 45...Rf7+ 46.Kg5 Rg8+ 47.Kh6 Ng4+ 48.Rxg4 Kxg4 49.Rxb5 Rf6+ 50.Kh7 Rg5 51.Rxg5+ Kxg5 52.Kg7 Ra6 53.Kf7 Kxh5 54.Ke7 Kg6 55.Kd7 Kf5 56.Bd6 Ra7+ 57.Kc6 Ke4 58.Kb5 Kd3 59.Be5 Rb7+ 60.Kc6 Re7 61.Bd6 Rh7 62.Be5 Rh5-+)]

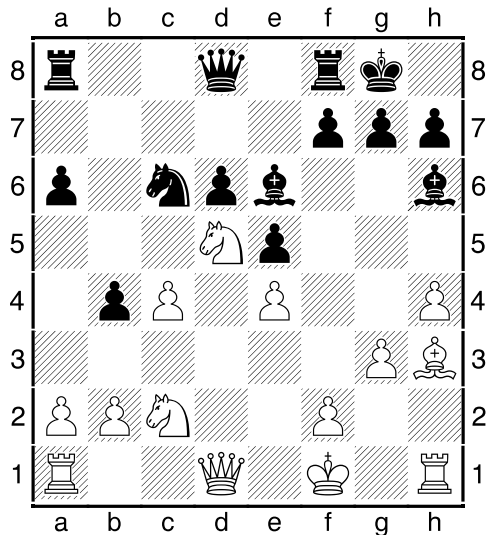
45...Rh7! 46.Rd4 Rh6+ 47.Kf5 Rxa6  
48.Bxe5 Rh6 and black has a great chance  
to win] 43.Kg6 Nd5 44.Rxb5 Nxf4+  
45.Bxf4 Rd3 46.h5 Rxc3 47.h6 Rb3 SS

**(04) Popov,Iv RUS (2605) - Caruana,F (2767) [B33]**

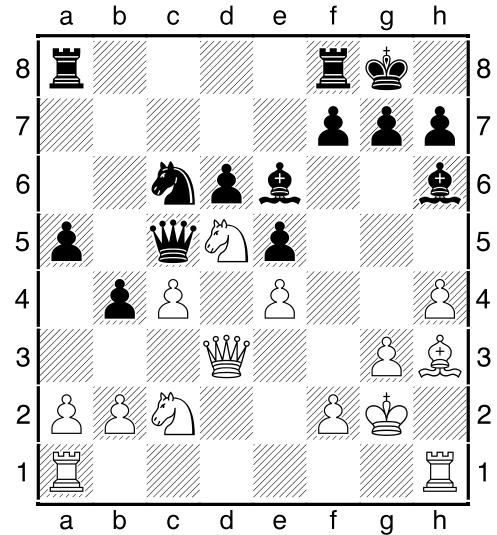
13th EICC Plovdiv BUL (3.1), 22.03.2012

[IM Iljin, T]

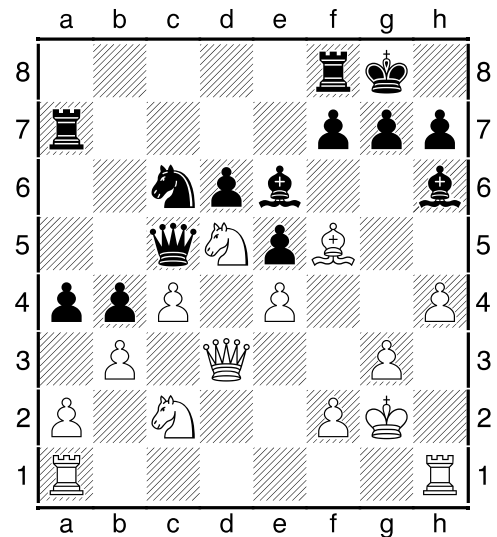
1.e4 c5 2.Nf3 Nc6 3.Nc3 Nf6 4.d4 cxd4  
5.Nxd4 e5 6.Ndb5 d6 7.Bg5 a6 8.Na3 b5  
9.Nd5 Be7 10.Bxf6 Bxf6 11.c4 b4 12.Nc2  
0-0 13.g3 Bg5 14.h4 Bh6 15.Bh3 Be6  
Typical maneuver: he is ready for ex-  
changes, but on his terms 16.Kf1



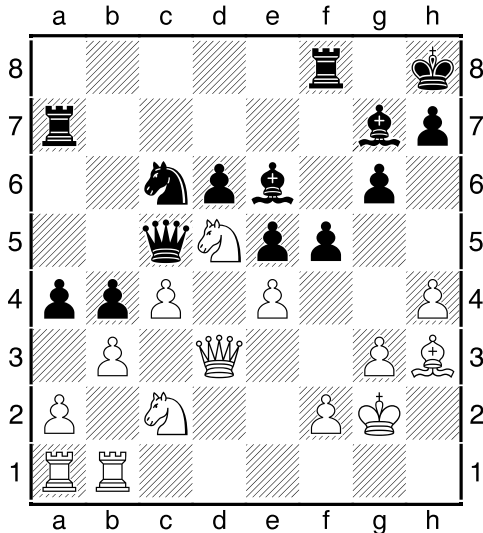
16...Qa5 Another standard plan – transfer  
black's queen to the blockade c5-square.  
[As for me, it's easier to put the pawn on  
a5: 16...a5 17.Kg2 Ne7 (Very interesting is  
17...Nb8!? 18.Qe2 Bxd5 19.cxd5 Na6!  
20.Ne3 Bxe3 21.Qxe3 Nc5) 18.Nce3 Bxe3  
19.Nxe3 Nc6 with an approximately equal  
position.] 17.Kg2 Qc5 18.Qd3 a5



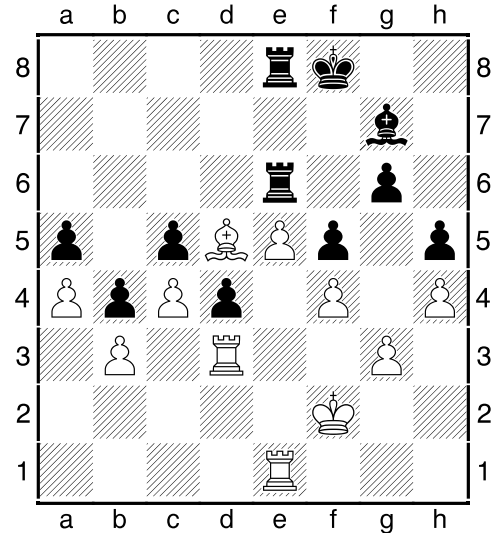
19.Rhf1 Looks like a loss of tempo. [More  
conceptual is 19.b3!? Now I'd like to give  
an example of a 'fresh' battle on this top-  
ic. With the permutation of moves the posi-  
tion has arisen in Rasulov, Vu (2526) –  
Mista, A (2587), EICC, 29.03.2012. Here  
made a strategic mistake by weakening his  
queenside pawns without any need:  
19...a4?! 20.Bf5! Ra7?



And it is – a direct tactical blunder, for  
which he was to be severely punished!  
21.a3! (The game continued in very  
strange way: 21.Rhb1? This complacency  
has cost dearly: 21...g6 22.Nf6+ Kh8  
23.Bh3 Bg7 24.Nd5 f5!→



with very strong black's initiative. Finally black managed to win.) 21...Bxd5 22.exd5 g6 23.dxc6 gxf5 24.Qd5! Forcing the transition to a hopeless end for black: 24...axb3 25.axb4 Qxd5+ 26.cxd5 Rxa1 27.Nxa1!+- etc.] **19...Ra7 20.b3 Bxd5 21.Qxd5** [21.exd5 Nd4 22.Nxd4 Qxd4 23.Qxd4 exd4 24.Rad1 g6 25.Rxd4 Re7!]=] **21...Rd8** [Possible is 21...Nd4 22.Nxd4 Qxd5 23.exd5 exd4 24.Rad1 Re7 25.Rfe1 (25.Rxd4 Re2!) 25...Rxe1 26.Rxe1 g6 27.f4 Rd8 28.Kf3 Bg7 29.Re2 d3 30.Rd2 Bd4 31.Rxd3 Bc5=] **22.Rfd1 Qb6** [In case of 22...Qxd5 black still has to 'suffer' for a draw: 23.Rxd5!? a4 (23...Nd4?? 24.Nxd4 exd4 25.e5) 24.Rad1 axb3 25.axb3 Ra2 26.Rxd6 Rxd6 27.Rxd6 Rxc2 28.Rxc6 Kf8 etc.] **23.Qb5** [23.a3!? bxa3 24.Nxa3 Raa8 25.Qb5 Qc7 26.Qa4 Nb4 27.Bg4 g6 28.Nb5 Qc5 29.h5] **23...Qc7** [Now 23...Qxb5 is not recommended: 24.cxb5 Ne7 25.a3 bxa3 26.Rxa3 , and black has weak pawns.] **24.Qa4** [24.c5 leads only to exchanges: 24...g6 (24...dxc5?? 25.Qxc6) 25.Rd5 Ne7 26.cxd6 Rxd6 27.Rxd6 Qxd6 28.Bg4 Rc7 29.Rd1 Qc6=] **24...g6 25.Rd3 Nd4** It's time! **26.Nxd4 exd4 27.Qb5** ['Greediness' is out of place here: 27.Rxd4? Bg7] **27...Qc5=** On the board – the full equality, but by the rules of the Championship to settle for a draw can not be before the 40th move! **28.f4 Bg7 29.Qxc5 dxc5 30.a4 Re7 31.Kf3 Rde8 32.Re1 f5 33.e5 h5 34.Bg2 Kf8 35.Kf2 Re6 36.Bd5**

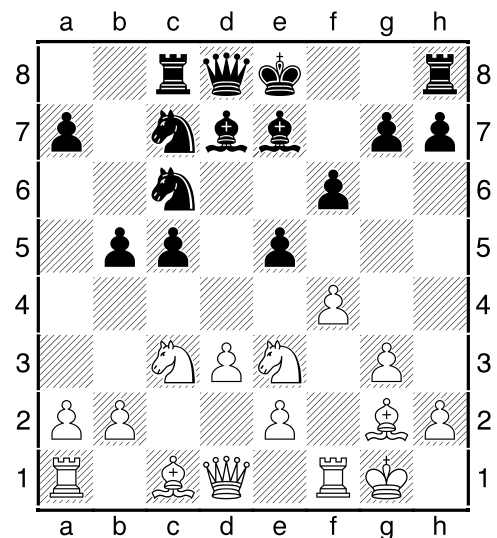


**36...Ke7!? 37.Rdd1 Rf8 38.Kf3 Bh6 39.Rd3 Kd7 40.Re2 Ke7 41.Rd1 SS**

**(05) Malakhov, V (2705) - Timofeev, Arty (2650) [A34]**

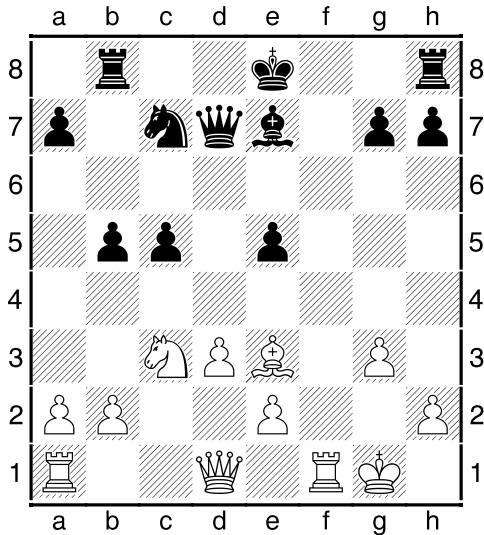
13th EICC Plovdiv BUL (7.11), 27.03.2012 [IM Iljin, T]

**1.c4 c5 2.Nf3 Nf6 3.Nc3 d5 4.cxd5 Nxd5 5.g3 Nc6 6.Bg2 Nc7 7.d3 e5 8.0-0 Be7 9.Nd2 Bd7 10.Nc4 f6** [Should explore the idea related to the victim of a central pawn: 10...0-0 11.Bxc6 Bxc6 12.Nxe5 Be8] **11.f4 b5 12.Ne3 Rc8**



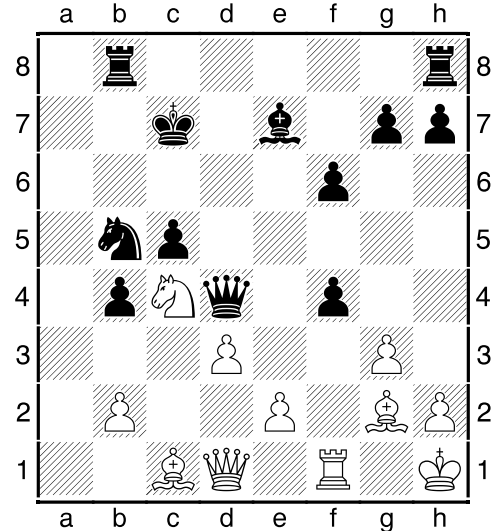
[I do not quite understand why the move 12...Rb8 commentators have put the question mark. After the move 13.Nf5! it is

not necessary to beat a knight, a castle can be safely: 13...0-0 (in case of 13...Bxf5?! 14.Bxc6+ Bd7 15.Bxd7+ Qxd7 16.fxe5 fxe5 (16...Qd4+?! 17.Kg2 Qxe5? 18.Bf4 Qe6 19.Bxc7 Qc6+ 20.Nd5! Qxd5+ 21.e4+-) 17.Be3

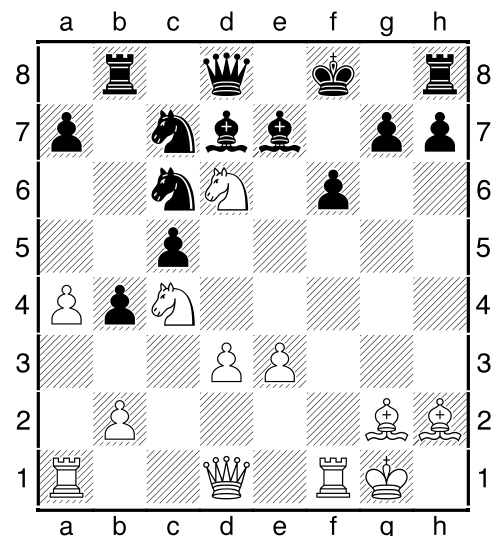


black king should remain at the center for the indefinite period of time, that defines the white's edge.) 14.Nxe7+ Qxe7 15.fxe5 Nxe5 16.Bf4 and white has only small advantage.] **13.a4** Ribli: 'Dieser Zug lässt Weiß auf Eröffnungsvorteil hoffen. Es gibt allerdings eine Reihe von Alternativen: 13.f2, 13.f5, 13.ded5, 13.fe5.' **13...b4** **14.Nb5 exf4** **15.Nc4!** надежда на разгромную [not dangerous is 15.Nxc7+ Rxc7 16.Rxf4 (or 16.gxf4 Be6 17.Nc4 Qd7 18.Kh1 0-0 19.b3 Nd4 with advantage for black Hjartarson,J-Sokolov,A/Rotterdam 1989/CBM 13 (46)) 16...0-0 17.Nf5 Be6 18.Be3 Qd7 ,and black is all right. Berkes,F-Perunovic,M/Balatonlelle 2001/EXT 2002 (40) ; 15.gxf4 also promises nothing to white: 15...Nxb5 16.axb5 Nd4 17.Rxa7 Nxb5 18.Ra6 0-0 19.f5 Nd4 20.Rf4 Kh8 21.Qf1 Bb5! ,and black gains an advantage. Lputian,S-Leko,P/Wijk aan Zee 77/46 2000/[Leko,P] (37); 15.Nf5 leads to exchanges and equal position: 15...Bxf5 16.Bxc6+ Bd7 17.Bxd7+ Qxd7 18.Nxc7+ Rxc7 19.Bxf4 Rc6] **15...fxg3** [15...Nxb5 does not promise a cloudless life: 16.axb5 Nd4 17.Rxa7! , and in case of 'theoretical' 17...Nxb5 white can apply a so called 'po-

tent means' of 18.Rxd7! Qxd7 19.Nb6 Qd4+ 20.Kh1 Rb8 21.Bc6+ Kd8 22.Nc4 Kc7 23.Bg2

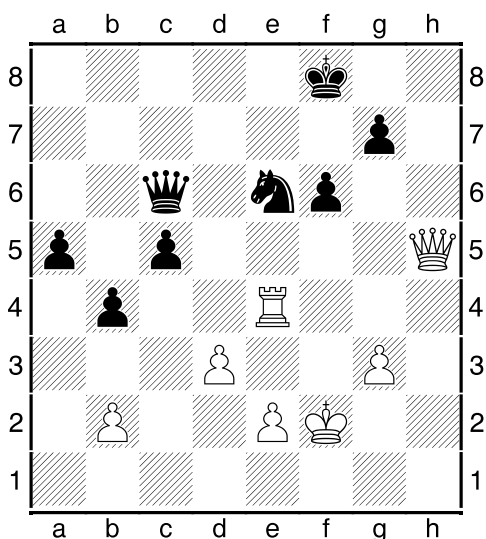


with the strongest initiative.] **16.Nbd6+ Bxd6?** To my mind is just a mistake. Because with the departure of such a defender of dark squares, black's problem will only increase. [Better was 16...Kf8 , without fear of 17.Nxc8 a) 17.hxg3?! Rb8 18.Be3 (18.Nf5 Bxf5 19.Rxf5 Qd7) 18...Ne6! 19.Bf2 h5 Black starts an attack on the precarious shelter of the white king.; b) The strongest is 17.Bf4! gxh2+ 18.Bxh2 Rb8 19.e3!

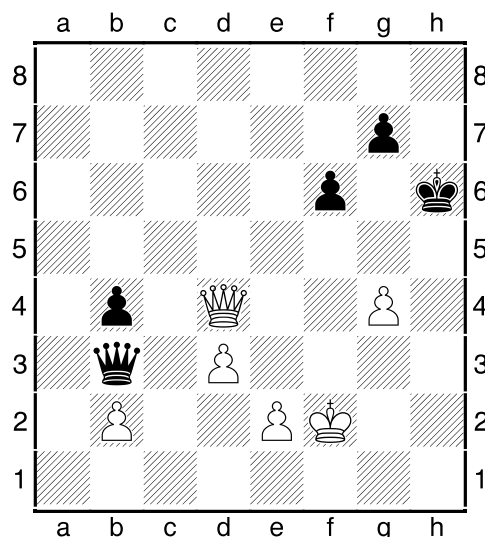


,preventing the opponent's knight to take an outpost in the center. White's pieces are

extremely active and there are 'hard times' for black now.; 17...gxh2+ 18.Kxh2 Qxc8 with an excellent compensation for black.] **17.Nxd6+ Ke7?! Another suspicious move.** [17...Kf8 18.Nxc8 gxh2+ 19.Kh1 Qxc8 20.Bf4 Ne6 21.Bd6+ Kf7 22.Rc1] **18.Nxc8+** [More stronger looks 18.Bf4! Ne6 19.Bxg3] **18...Qxc8 19.hxg3 Nd4 20.Be3 Nce6 21.Rc1 Rd8 22.Rc4 Bc6** [22...Kf8 23.Bh6 gxh6 24.e3 Kg7 25.exd4 Nxd4 26.Qh5 f5 27.Qh4] **23.Bxd4 Rxd4 24.Rxd4 Bxg2 25.Rc4 Bxf1 26.Qxf1 Qd7 27.Qf5 Qxa4 28.Re4 Qc6 29.Qxh7 Kf7 30.Qh5+ Kf8 31.Kf2 a5**



**32.Rxe6** A very responsible decision! Because the Queen's endgame with an extra pawn is not so easy for win. **32...Qxe6 33.Qxc5+ Kf7** [In event of 33...Qe7 White, obviously, does not change the queens, but takes the pawn: 34.Qxa5] **34.Qxa5 Qb3 35.Qa7+ Kg6 36.Qd4 Kh6 37.g4**

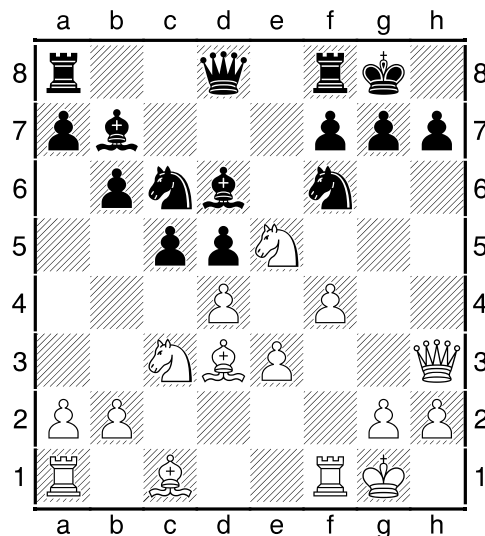


**37...Kg6?** a crucial error – just a blunder! [on the chance of 37...Kh7 black could fight long and hard with the odds for a draw] **38.Qe4+!** But now black resigns because of the inevitable exchange of queens. May be he misses mate in 3 in his calculations: **38...Kh6 39.Qh1+ Kg5 40.Qh5+ Kf4 41.Qf5# 1-0**

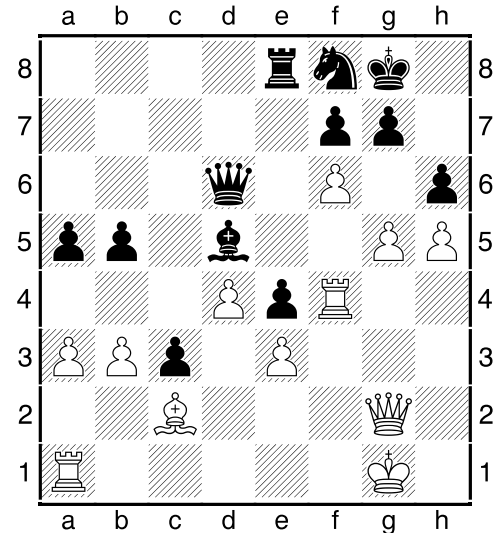
**(06) Mastrovasilis,A (2510) - Salgado Lopez,I (2621) [E52]**

13th EICC Plovdiv BUL (8.39), 28.03.2012  
[IM Iljin, T]

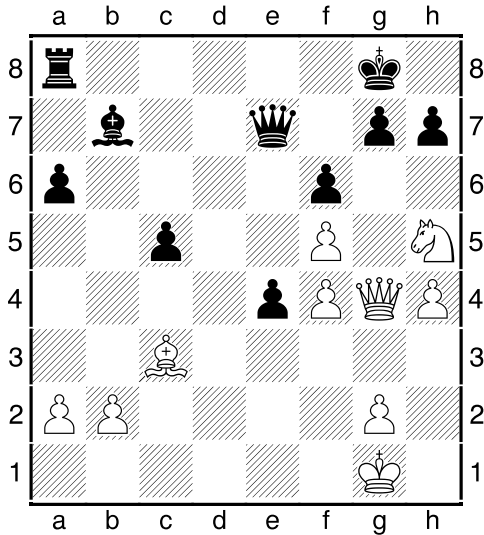
**1.d4 Nf6 2.c4 e6 3.Nc3 Bb4 4.e3 b6 5.Bd3 Bb7 6.Nf3 0-0 7.0-0 d5 8.cxd5 exd5 9.Ne5 Bd6 10.f4 c5 11.Qf3 Nc6 12.Qh3**



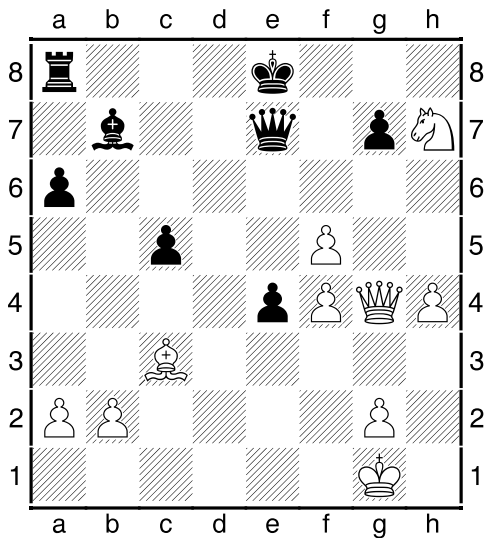
**12...Ne7?** It's a well-known mistake which includes in all manuals of chess tactics. This position is encountered in the practice of two outstanding Soviet GMs 45 years ago! (the game Simagin – Razuvaev see below). [The reliable move 12...g6 leads to good results for Black: 13.Kh1 a6 (or 13...Re8 14.Bd2 (14.Be2 Rc8 15.Bd2 Rc7 16.Be1 Ne4 17.Nxe4 dxe4 18.Bc3 Ba6 19.Nxc6 Rxc6 20.Rf2 Bxe2 21.d5 Rc8 22.Rxe2 b5 23.f5 b4 24.fxc6 fxc6 25.Be1 Be5 26.Rd1 Qd6 27.b3 c4 28.bxc4 Rxc4 29.Bh4 a5 30.Rf2 a4 31.Rdf1 Rc7 32.Qg4 Qxd5 33.Qg5 Qe6 34.Bg3 Rce7 35.Rf5 h6 0-1 Del Rio Angelis,S (2521)–Romanov,E (2594)/Marrakesh 2010/CBM 137 Extra) 14...Bf8 15.Bb5 Qc8 16.Bxc6 Bxc6 17.f5 Bg7 18.Qh4 Rf8 19.Rf3 Bb7 20.Raf1 Qd8 21.Be1 Ba6 22.R1f2 Rc8 1/2 Sadler,M (2665)–Ehlvest,J (2610)/Groningen 1997/CBM 063) 14.Bd2 b5 15.Rad1 cxd4 16.Nxc6 Bxc6 17.exd4 b4 18.Ne2 Bb5 19.f5 Bxd3 20.Qxd3 Ne4 21.Bf4 1/2 Sadler,M (2660)–Kortschnoj,V (2625)/Tilburg 1998/EXT 99] **13.Nd7!** Sleek tactical shot on distraction and overload! **13...Ng6** Regarding the best. Black has to give up the exchange. [Very bad is 13...Qxd7?? 14.Bxh7+! Kh8 15.Bf5+ and Black misses the Queen.] **14.Nxf8 Nxf8 15.Bd2 Qe7** [Now I want to show the well-known original game of this variation: 15...c4 16.Bc2 a6 17.g4 b5 18.g5 Ne4 19.Nxe4 dxe4 20.a3 a5 21.Qg2 Qe8 22.f5 Bd5 23.Be1 Qc6 24.Bg3 Re8 25.Bxd6 Qxd6 26.Rf4 Qc6 27.h4 c3 28.b3 Qd6 29.h5 h6 30.f6!



with a devastating attack 1-0 Simagin,V–Razuvaev,Y/Moscow 1967/EXT 2001] **16.Rae1 a6** [Surprisingly, but the former world championship contender Timman landed in the same trap in the game with the legendary Viktor Kortchnoi. However, later he managed to escape: 16...c4 17.Bc2 Bb4 18.f5 Bxc3 19.Bxc3 a5 20.g4 h6 21.Qg2 Ne4 22.Bxe4 Qxe4 23.Qg3 (23.Qxe4! dxe4 24.Kf2) 23...Nh7 24.Re2 Re8 25.Rg2 Qxe3+ 26.Qxe3 Rxe3 27.Re1 Rxe1+ 28.Bxe1 Ng5 29.Kf2 Kf8 30.Ke3 Ke8 31.b3 cxb3 32.axb3 Ne4 33.Bg3 Kd7 34.Bf4 Bc6 35.h4 b5 36.g5 hxg5 37.hxg5 g6 etc. 1/2 Kortschnoj,V (2607)–Timman,J (2616)/Almemlo 2006/CBM 111 ext (52)] **17.dxc5 bxc5 18.Ne2 Ne4 19.Bxe4 Qxe4 20.Bc3 Qd3 21.Ng3 Ne6 22.f5 Ng5 23.Qg4 f6 24.Nh5 Qe4 25.Rf4! Qe7 26.h4 Bxf4 27.exf4 Ne4 28.Rxe4 dxe4**



**29.Nxf6+** [or 29.Bxf6 Qd7 30.Bxg7 , breaking the hut of black king 30...Kf7 31.Be5 Rg8 32.Qxg8+! Kxg8 33.Nf6+--] **29...Kf8 30.Nxh7+ Ke8**

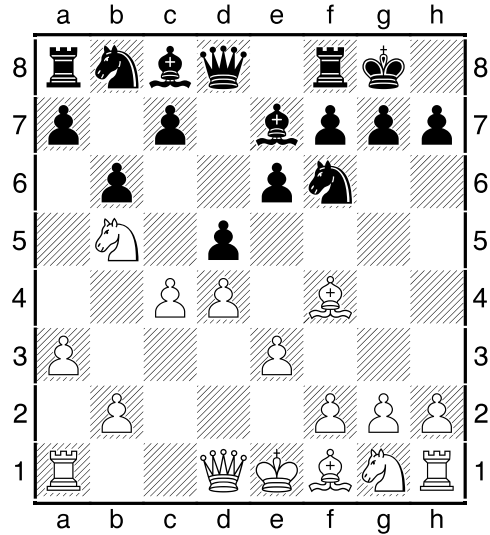


As if sensing something was wrong, the black king was about to run away, but too late, friend! **31.f6 Qd7 32.Qh5+ Qf7 33.Qe5+ Kd7 34.fxg7 e3 35.Nf6+ Kc6 36.b4 cxb4 37.Qe4+ Kb6 38.Qxb4+ Kc6 39.Qa4+** And black finally resigned. 1-0

**(07) Jobava,Ba (2706) - Fridman,D (2653) [D35]**

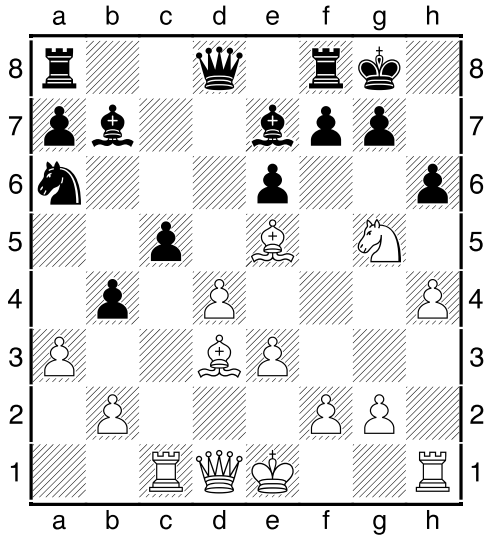
13th EICC Plovdiv BUL (8.12), 28.03.2012  
[IM Iljin, T]

**1.d4 d5 2.c4 e6 3.Nc3 Be7 4.Bf4 Nf6 5.e3 0-0 6.a3 b6 7.Nb5!?**N

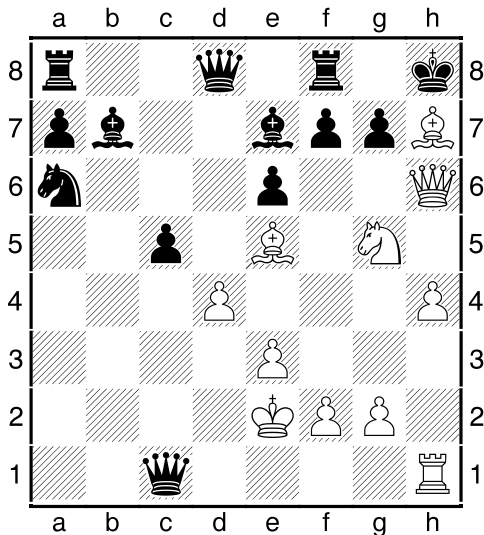


Novelty on the 7th move in Queen's Gambit – is something outstanding!**7...Na6** [7...a6 8.Nxc7 Ra7 9.Ne8! Interesting resource! it was found that the knight is not caught! 9...Rxe8 10.Bxb8 Ra8 11.Bg3 Bb7 12.Nf3 Ne4 13.Bd3 dxc4 14.Bxc4 Rc8 15.Bd3 Qd5 16.0-0 h5 17.h4 Nxg3 18.fxg3 And, after all, black hasn't full compensation for the pawn.] **8.Nf3 Bb7 9.Rc1 dxc4?!** Losing a tempo. [9...c6!? 10.Nc3 Nc7 11.Bd3 dxc4! 12.Bxc4 Ncd5 13.Nxd5 cxd5 14.Bd3 Rc8 15.0-0 Rxc1 16.Qxc1 Bd6 17.Ne5 Nh5=] **10.Bxc4 Nd5 11.Be5 c6 12.Nc3 Nxc3 13.Rxc3 b5!? 14.Bd3 b4 15.Rc1 c5 16.h4!?** Very aggressive style! [Humble 16.0-0 cxd4 17.Bxd4 Rc8 18.Rxc8 Qxc8 19.Qb1 g6 20.Ne5 Qa8 21.Ng4 Rc8 22.f3 lets keep the positional advantage for white.] **16...h6!?** Causing a fire on the board! [16...bxa3 17.bxa3 (17.Bxh7+? Kxh7 18.Ng5+ Kg8 19.Qh5 Be4!-+; About the opportunity of 17.Ng5!? h6 18.Qh5 Bf6 look notes to black's 17th move.) 17...cxd4 18.Bxd4 Qa5+ 19.Qd2 Qxa3 20.0-0 Nb4 17.Ng5!?



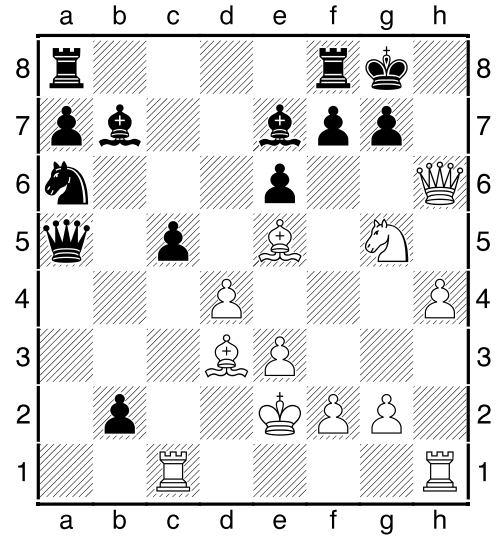


[The option 17.0-0! is also very good here:  
 17...bxa3 (17...Bxh4? 18.Nxh4 Qxh4  
 19.dxc5+-) 18.bxa3 cxd4 19.exd4 Rc8  
 (After 19...Nb8 20.Bb1 Bd5 21.Qc2 f5  
 22.Ba2 White has big edge.) 20.Rb1 Qd7  
 21.Nd2! f6 22.Rxb7 Qxb7 23.Qg4 Rf7  
 24.Qg6 Kf8 25.Rb1 Qc6 26.Qh7 Bxa3  
 27.Nc4+-] **17...cxd4** [I consider 17...bxa3!  
 the best opportunity here: 18.Qh5! Bf6!  
 (18...axb2? Here I've found a very beautiful  
 line: 19.Bh7+! Kh8 20.Qxh6! bxc1Q+  
 21.Ke2

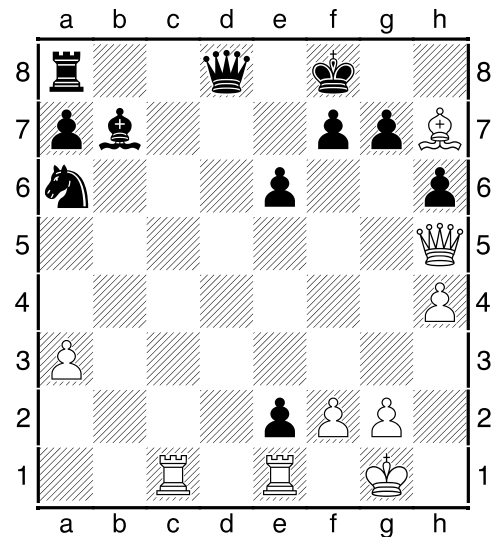


with the fast checkmate.) 19.Bxf6 axb2  
 20.Rb1 Qxf6 21.Nh7 Qe7 22.Nxf8 c4!?  
 23.Bh7+ Kxf8 24.Rxb2 Bxg2 25.Rg1 Qa3  
 26.Rxg2! Qxb2 27.Qe5 with approximately  
 equal chances in very complicated posi-

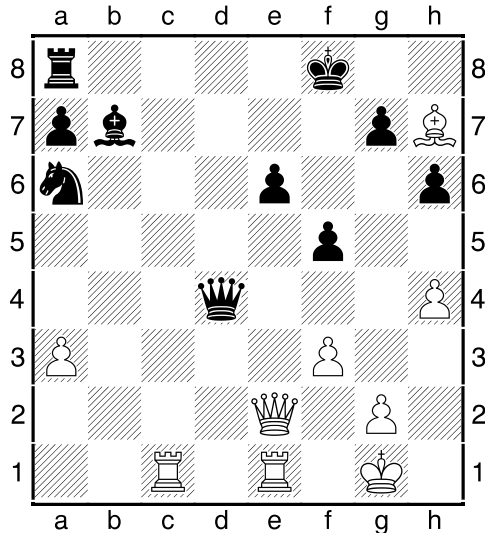
tion.; Bad is also 17...Qa5 with another  
 nice line: 18.Qh5! bxa3+ 19.Ke2 axb2  
 20.Qxh6!+-



; too arrogant is 17...Bxg5? 18.hxg5 Qxg5  
 19.Rh3! cxd4 20.Bxg7! dxe3 21.Rxe3 Kxg7  
 22.Rg3+-] **18.Qh5 Bf6 19.Bxf6 Qxf6**  
**20.Nh7 Qd8 21.Nxf8 dxe3 22.Bh7+ Kxf8**  
**23.0-0 e2 24.Rfe1 bxa3 25.bxa3**



**25...f5?** It's difficult to justify such a serious  
 weakening of the position. It looks like a  
 hara-kiri. [25...Qd2 26.Bb1] **26.Qxe2 Qd5**  
**27.f3 Qd4+**



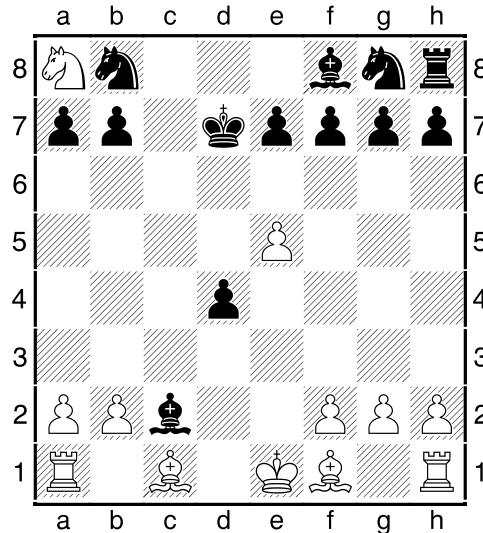
**28.Qe3** This transition to the endgame delaying the victory. However, White managed to win because he has very strong technique. [Better is 28.Kf1! Nc5 29.Red1 Qa4 30.Qe5 Rc8 31.Kg1+/- with total domination.] **28...Qxe3+ 29.Rxe3 Kf7 30.Rb3 Bd5 31.Rb5 Rd8 32.h5! Kf6 33.Bg6 Rd7 34.Kf2 Ke7 35.Ra5 Rd6 36.Rc8!+- Rb6 37.Bxf5 Bb7 38.Rg8 exf5 39.Rxg7+ Kf6** [In case of 39...Kf8 even a rough 40.Rxb7!? Rxb7 41.Rxa6 decides the game.] **40.Rg6+ Ke7 41.Re5+ Kd7 42.Rxb6 axb6 43.Rxf5 Nc5 44.Rf6 b5 45.Rxh6 Nd3+ 46.Ke3 Ne1 47.Rh7+ Kc6 48.Rxb7 Kxb7 49.h6 Nxc2+ 50.Ke4 Nh4 51.h7 Ng6 52.Kf5 Nh8 53.Kf6 1-0**

**(08) Edouard,R (2607) - Fridman,D (2653) [B12]**

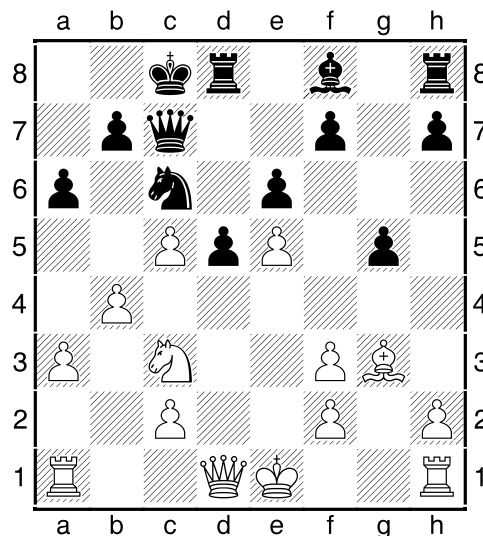
13th EICC Plovdiv BUL (10.23), 30.03.2012

[IM Iljin, T]

**1.e4 c6 2.d4 d5 3.e5 c5 4.Nf3 Bg4!?** I think this is a good move order, because in event of [4...Nc6 the option 5.c4! gives an unpleasant initiative.] **5.Bb5+** [Here it seems to me that after 5.c4!? cxd4 6.cxd5 Qxd5 7.Nc3 Bxf3 8.Nxd5 Bxd1 9.Nc7+ Kd7 10.Nxa8 Bc2=

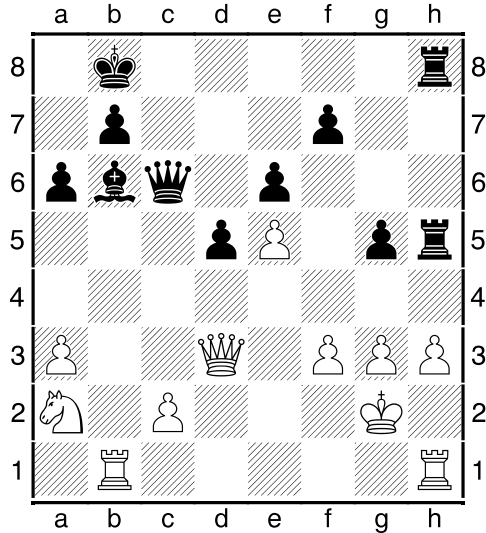


black is OK.] **5...Nc6 6.dxc5 Qa5+!** [6...e6?! 7.b4] **7.Nc3 e6** with a permutation of moves we've come to the game Perez Candelario, Man (2559) - Delchev, A (2629), 22.11.2011, which has been analyzed in detail by the expert of the Caro-Kann Defense IM Anatoliy Polivanov in CZM 12/2011. **8.Be3 Nge7 9.a3** [9.h3 Bxf3! 10.Qxf3 a6 11.Bxc6+ Nxc6 12.Qg4 0-0-0 13.0-0-0 Nxe5=] **9...0-0-0 10.b4 Bxf3 11.gxf3 Qc7 12.Bxc6 Nxc6 13.Bf4** [13.Bd4 a6 14.f4 g5! 15.fxc6 h6 , and opening the lines on the kingside is to black's favour.] **13...a6 14.Bg3 g5**

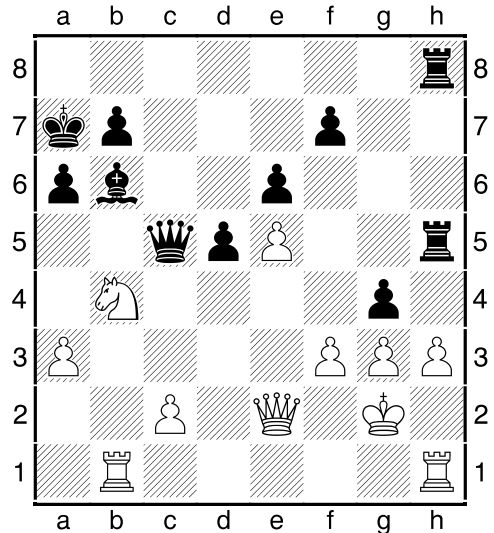


Now we will see clearly unsuccessful innovation:**15.0-0?** [in the above-mentioned game, white played more stronger: 15.h4!

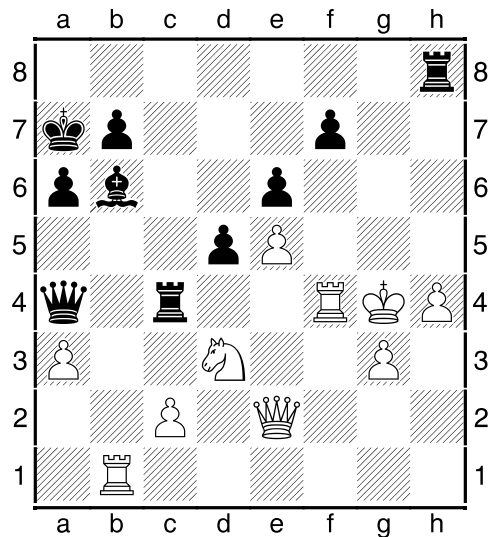
Bg7 16.hxg5 Bxe5 17.Ne2 f6 with mutual chances.] **15...h5! 16.b5** [16.h3 h4 17.Bh2 Bg7 18.b5 Bxe5 19.Bxe5 Nxe5 20.bxa6 bxa6 21.Na4 Kd7 22.Rb1 Ke8] **16...h4 17.bxc6 Qxc6 18.Qd3 Bxc5 19.Kg2 Rh5! 20.Rh1 Rdh8 21.h3** literally forcing the rival to take away a piece! **21...hxg3 22.fxg3 Bb6!** In spite of the material balance, the positional edge here on the black's side. **23.Na2 Kb8 24.Rab1**



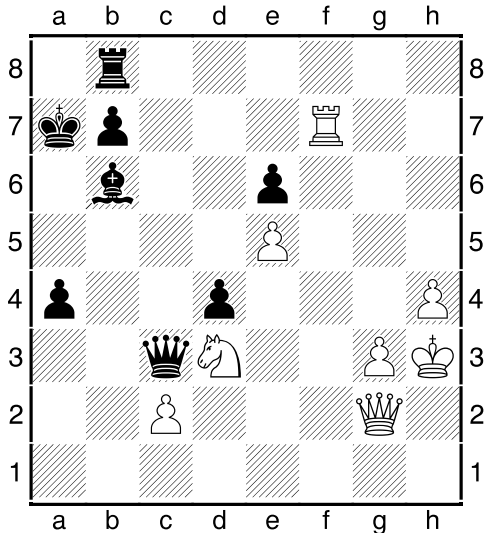
**24...Qc5?!** Inaccuracy! Black had to take advantage of the fact that the white knight is on the edge of the board. Black can strike a decisive blow: [24...g4! 25.fxg4 (25.hxg4 Rxh1 26.Rxh1 Rxh1 27.Kxh1 Qc5 28.Qd1 Qxa3) 25...Rxe5 26.Rhe1 Rxe1 27.Rxe1 Rc8 28.Rc1 a5!-+ and the white knight, it seems, does not come to the game.] **25.Qe2 Ka7 26.Nb4 g4**



**27.Nd3!** [27.fxg4 Rxe5! 28.Qxe5? Qf2#] **27...gxf3+ [27...gxh3+ 28.Kh2] 28.Kxf3** [28.Qxf3?? Qxc2+ 29.Nf2 Rf5] **28...Qc6 29.h4!** now white achieve approximate equality of the chances! Black's edge seems to 'pour through a sieve'. **29...Rc8** [29...f6 30.Kg2 fxe5 31.Nxe5 Rxe5 32.Qxe5 Bc7 33.Qe2 e5] **30.Kg4 Rhh8 31.Rhf1 Qa4+ 32.Rf4 Rc4**



**33.Rb4** [33.Rxc4! Qxc4+ 34.Kh3] **33...Rxf4+ 34.Rxf4 Qxa3 35.Rxf7 a5 36.Kh3 a4 37.Rf4** [37.c4 Qc3 38.cxd5 exd5] **37...d4 38.Rf7 Qc3 39.Qg2 Rb8**



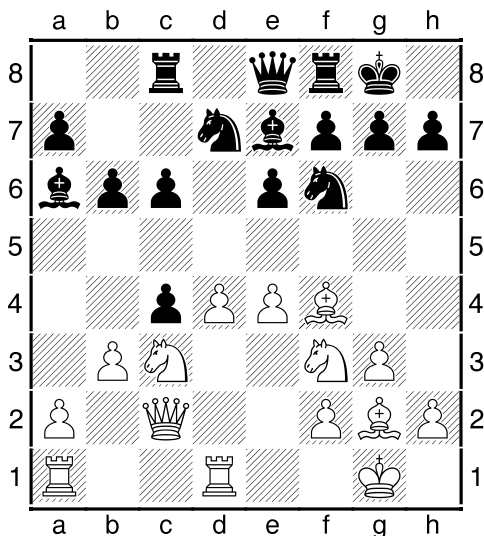
**40.Rf1?** It's not necessary to move back!  
 [40.Qh1! a3 41.Qb1=] **40...a3 41.Nc1 Rc8**  
**42.Rf7** Too late! **42...Rc7+ 43.Rxc7 Bxc7**  
**44.Qe2 Qa1 45.Qc4? Qxc1 46.Qxc7 Qf1+**  
**47.Kh2 Qb5 48.Qd6 Qa4 49.Qc5+ Ka6**  
**50.Qd6+ b6 51.Qxe6 Qxc2+ 52.Kh3 a2**  
**53.Qd5 Qc8+ 0-1**

**(09) Cheparinov, I (2664) - Sjugirov, S (2610) [E15]**

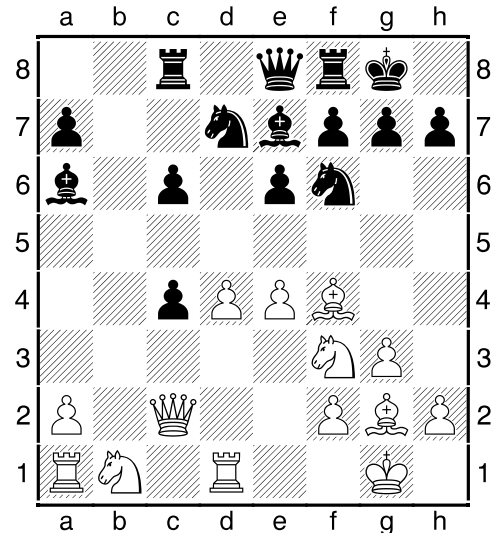
13th EICC Plovdiv BUL (10.22),  
 30.03.2012

[IM Ijgin, T]

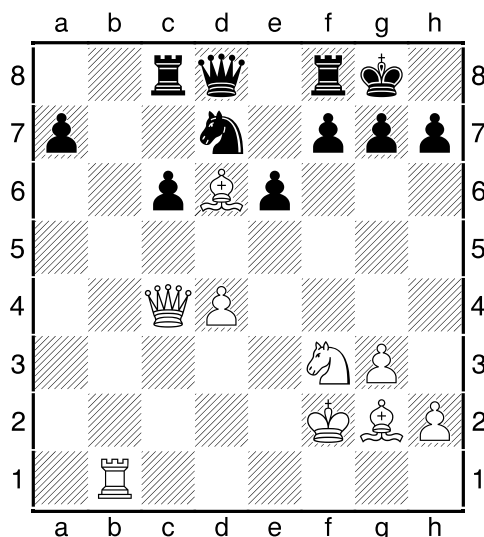
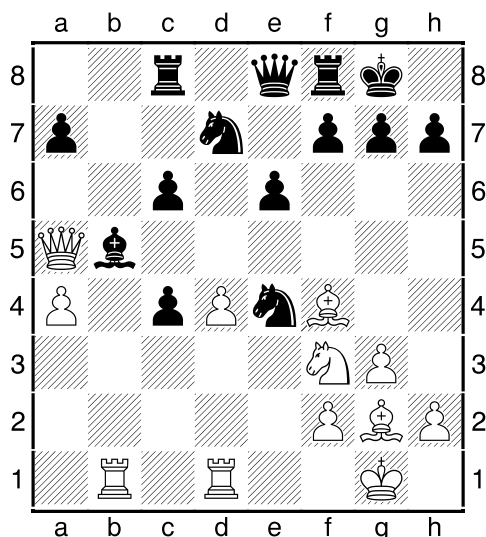
**1.d4 Nf6 2.c4 e6 3.g3 d5 4.Nf3 Bb4+**  
**5.Bd2 Be7 6.Bg2 0-0 7.0-0 c6 8.Qc2 b6**  
**9.Rd1 Nbd7 10.Bf4 Ba6 11.b3 Rc8**  
**12.Nc3 Qe8 13.e4 dxc4**



**14.Nb1** An interesting idea, although this move is not new. White asks the partner to decide the fate of the c4-pawn. And black has a very wide range of extensions here: to take on b3, to defend the pawn by b6-b5, to move c6-c5 with the knight jumping to h5, and, finally, it can be any neutral move. [In event of simple 14.bxc4 Bxc4 15.Nd2 Ba6 16.Qa4 Bd3 17.Nb3 Bc2 18.Rdc1 Bd3 19.Rd1 Bc2 white can't extract more than draw by repetition.; The different route of knight is also worthy: 14.Ne2 cxb3 15.axb3 Bxe2! 16.Qxe2 a5 with full compensation for the pawn.] **14...b5** [In the course of 14...cxb3 15.axb3 Bb5 16.Rxa7 Ra8 17.Rxa8 Qxa8 18.Nc3 white's advantage can be seen without evidence.] **15.bxc4 bxc4**

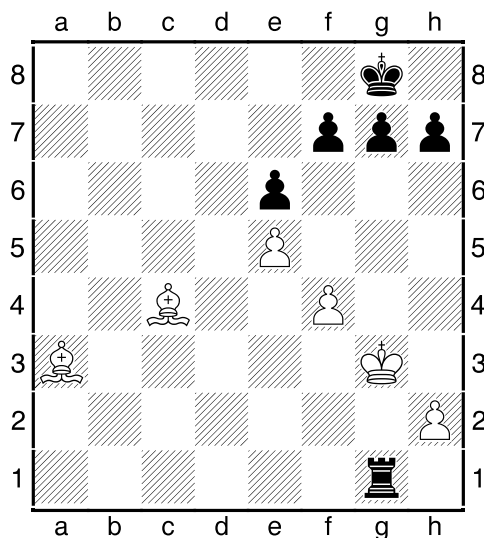


**16.Nc3N** Conceptual novelty! Though at first sight these knight's maneuvers produce very strange impression, I think that this is the strongest plan in this position. [16.Nbd2?! c5 an attempt to comfortably win back the pawn - falls.] **16...Bb4?!** Risky plan. It's clear that black wants to win a pawn, but he overlooks that his light-squared bishop falls into a trap. [As for me, it was worth to perform such a waiting move: 16...Nh5 17.Be3 Nh6; or 16...h6!?] **17.Rab1! Bxc3 18.Qxc3 Nxe4** [18...c5!? 19.Qa3 c3 20.Qxc3 Nxe4 21.Qa3 Be2 22.Rdc1 c4 23.Rb7!] **19.Qa5! Bb5 20.a4**



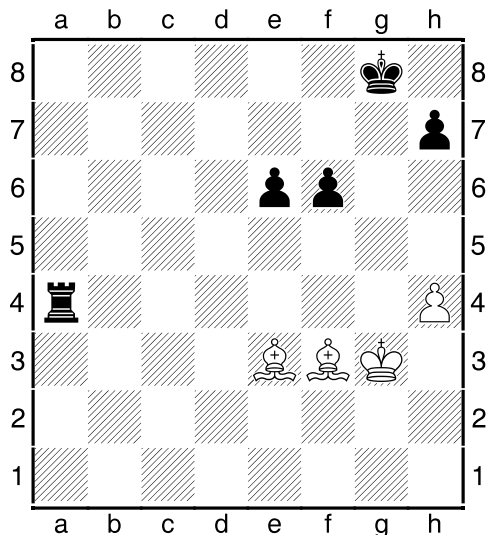
[Previously it was possible to disturb the black knight: 20.Re1!? Nef6 (too risky is 20...f5 21.a4 a6 (21...Bxa4? leads to smash: 22.Qxa4 Nc3 23.Qxc4 Nxb1 24.Rxe6 Nb6 25.Qb3) 22.axb5 axb5 23.Nd2 , and numerous black pawn weaknesses will be felt.) 21.a4 a6 22.axb5 axb5 23.Bd6 Qd8 24.Qa6 Re8 25.Ne5 Nxe5 26.dxe5 Nd5 27.Bxd5 cxd5 28.Qxb5 ,and with such a powerful bishop, white must win. 28...Ra8 29.Ra1 h6] **20...Bxa4** [The transition to the endgame does not relieve to black: 20...Qd8 21.Qxd8 Rfxd8 22.axb5 cxb5 23.Rdc1 a6 24.Ng5 Nxc6 25.Bxc6 Qd7 27.Ne5±] **23...Nxf2 24.Kxf2 Qd8**

**25.Rb7?** [Why does white shrink from the opponent's rook? 25.Bxf8! Kxf8 26.Ne5 Nxe5 27.Qc5+ Kg8 28.Qxe5±] **25...Re8 26.Ne5 Nxe5 27.dxe5 Qg5 28.Qf4 Qxf4+ 29.gxf4 a5 30.Rb6 a4 31.Ke3 a3 32.Rb1** Sadly, but almost nothing remained of the former white's advantage. Logical ending of this game would be a draw, but the goddess of chess Kaissa has her own plan. [32.Bxa3 Rb8 33.Rxb8 Rxb8] **32...Red8 33.Ra1 Ra8 34.Bxc6 Ra6 35.Bb5 Ra7 36.Rxa3 Rxa3+ 37.Bxa3 Rb8 38.Bc4 Rb1 39.Kf3 Rh1 40.Kg3 Rg1+**



**41.Kf2?!** Out of harm's way, no need to move white's king away from the f4-pawn. [Better looks 41.Kf3 Rh1 42.f5 exf5 43.e6 fxe6 44.Bxe6+ Kh8 45.Bd6= g6??]

46.Be5#] 41...Ra1 42.Be7 Ra4 43.Be2 Rxf4+ 44.Bf3 Ra4 [44...f5! 45.exf6 e5 46.Kg3 gxf6] 45.Kg3 Ra7 46.Bd8 Rd7 47.Bg5 Rc7 48.Be3 Rc3 49.Bd4 Rc4 50.Be3 Ra4 51.h4 f6 52.exf6 gxf6



With the appearance of two connected passed pawns, the save of the game become a very difficult task. 53.Bc6 Ra3 54.Kf2 Kf7 55.Be4 f5 56.Bc6 e5 57.Bg5 Ke6 58.Bg2 Ra4 59.Kf1 Ra2 60.Kg1 Rb2 61.Kf1 e4 62.Bf4 Kd5 63.Bh6 Rb6 64.Bf4 Kd4 65.Kf2 Rb2+ 66.Kg3 e3 67.Bf3 Kd3 68.Bd6 Rb6 69.Bc7 Rb4 70.h5 Rb1 71.Kf4 Rf1 72.Bd8 e2 73.Ba5 Kc4 74.h6 Kc5 75.Bc3 Kd6 0-1

(10) Giri,A (2717) - Zontakh,A (2556)

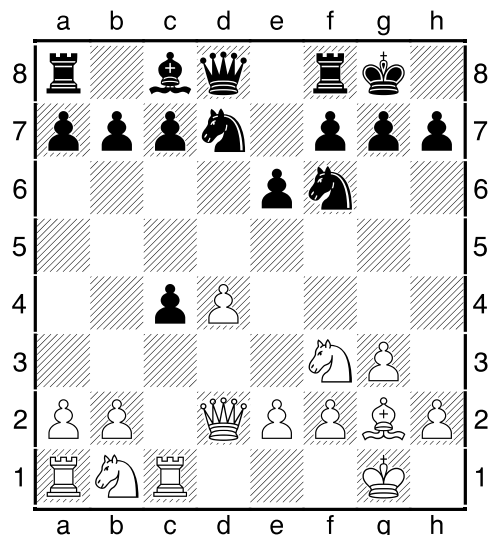
[E11]

13th EICC Plovdiv BUL (11.52),

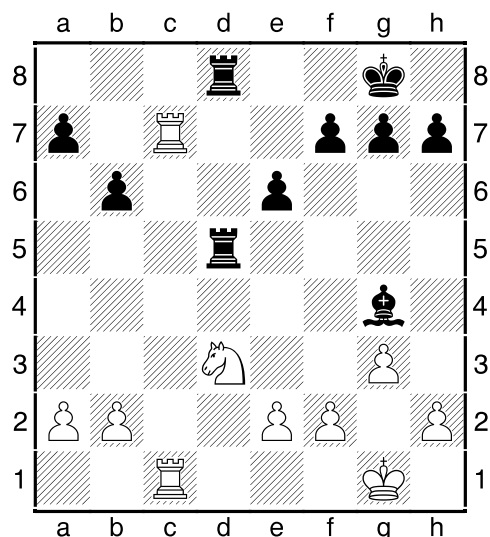
31.03.2012

[IM Iljin, T]

1.d4 Nf6 2.c4 e6 3.Nf3 d5 4.g3 Bb4+ 5.Bd2 Bxd2+ 6.Qxd2 0-0 7.Bg2 Nbd7 8.0-0 dxc4 [I like the continuation of 8...c6 ,building up a reliable barrier to the powerful white's Catalan bishop.] 9.Rc1

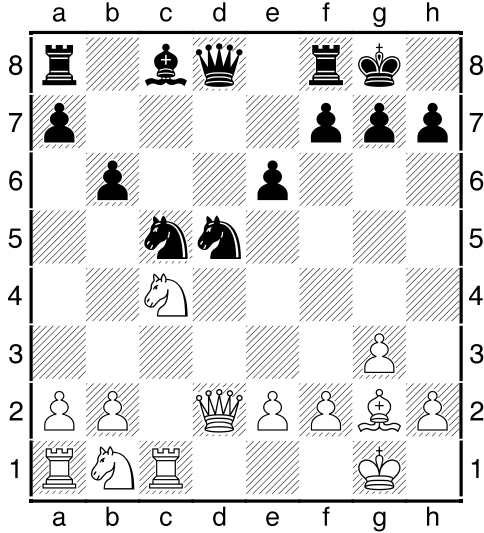


9...c5?! Black tends to a straight-line simplifications and equation, but fails to achieve his goal,because the white's light-squared bishop becomes very strong. 10.dxc5 Nxc5 11.Ne5! Keeping the pressure. [11.Rxc4 If white immediately takes back the pawn, then black managed to develop his queenside pieces: 11...b6 12.Ne5 Bb7 with almost equal chances: 13.Rxc5 Bxg2 14.Qxd8 Rfxd8 15.Rc7 Bh3 16.Nc3 Nd5 17.Nxd5 Rxd5 18.Rac1 Rad8 19.Nd3 Bg4

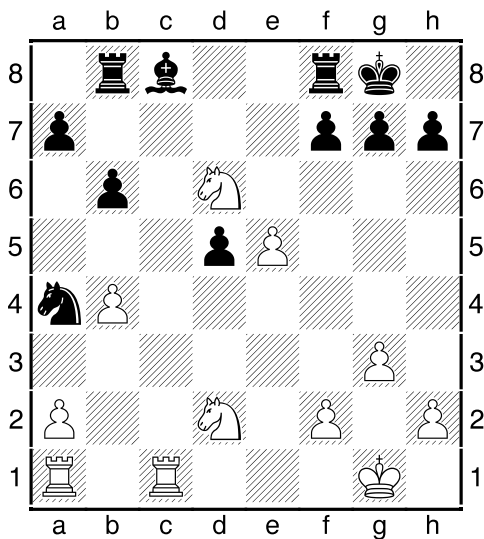


] 11...Nd5?! It's an understandable desire to barricade a large white diagonal, but now both black knights are unstable and are subject to pawn thrusts. [11...Qe7 12.Rxc4 Rd8 13.Rd4 Rxd4 14.Qxd4 Bd7

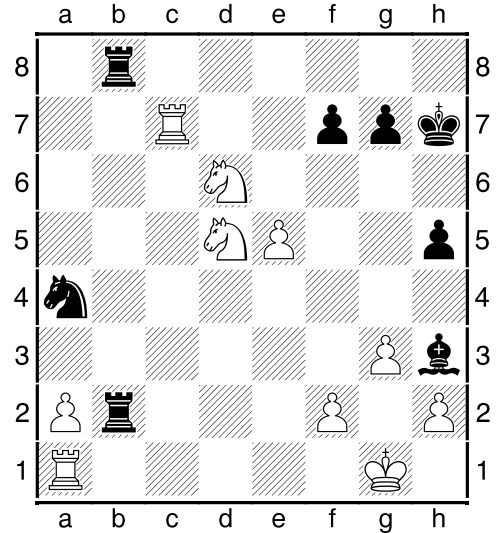
15.Nc3 Rc8 16.Rd1 Be8!; In my opinion, the best way to gradually equalize for black is 11...Nce4! 12.Qxd8 Rxd8 13.Nc3 Nxc3 14.Rxc3 Nd5 15.Rxc4 f6 16.Nd3 Bd7] **12.Nxc4 b6**



**13.b4! Na4** Black has to either go into exile with his knight somewhere in the 'suburbs', or to give up the pawn after [13...Nd7 14.Bxd5 exd5 15.Qxd5] **14.e4 Nc7 15.e5** re-opening a very dangerous diagonal a1-h8 and seizing a bridgehead for a c4-knight. **15...Qxd2 16.Nbxd2 Nd5 17.Nd6 Rb8 18.Bxd5 exd5**



**19.Rc7!** White pieces occupy the key places of the board, as if to schedule. **19...a5 20.bxa5 bxa5 21.Nb3 Bh3** [Black could resist with more tenacity: 21...Be6 22.Nxa5 Rb2 23.f4 g6 24.Nc6 Rd2 without giving up, at least, the d5-pawn.] **22.Nxa5 Rb2 23.Nc6 h5?** Black is under distraction. [And again black could show more persistence: 23...Be6 ] **24.Ne7+ Kh7 25.Nxd5 Rfb8**



with a quiet hope to announce mate in the first line. **26.Nxf7!** White has already won a third pawn, and black resigned, as the checkmate was not there: **26...Rb1+ 27.Rc1 1-0**

***Editorial staff:***

IM **Timofey Iljin** (ELO 2507)  
IM **Anatoliy Polivanov** (ELO 2356)  
IM **Tarlev Konstantin** (ELO 2520)  
IM **Sergey Perun** (ELO 2345)  
**Dmitry Posokhov** (ELO 2294)

Chief editor **Roman Viliavin** (ELO 2248)  
email: [chesszone@ya.ru](mailto:chesszone@ya.ru)