

ChessZone Magazine

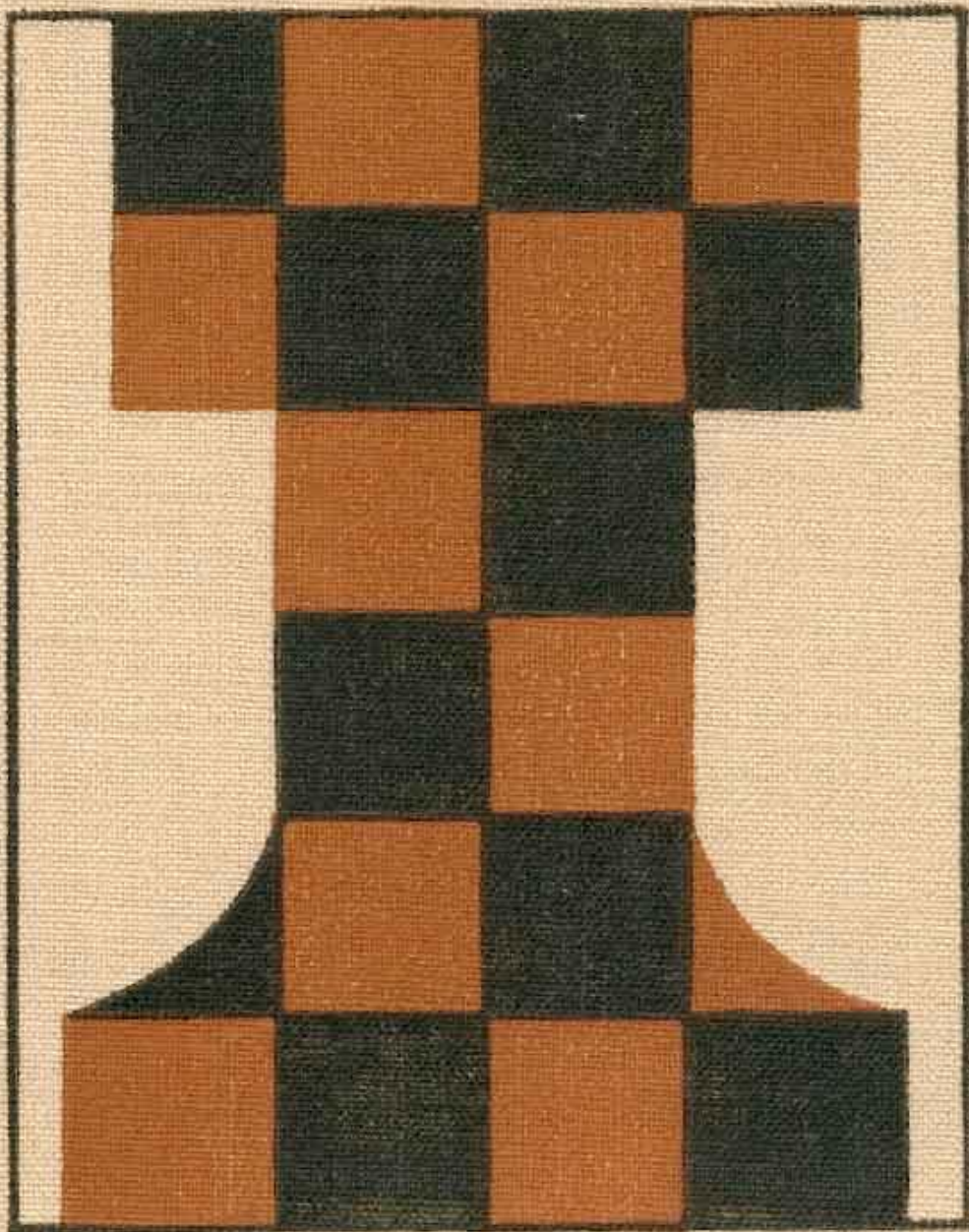


Table of contents: # 02, 2014

Games	4
(01) Carlsen,M (2872) - Gelfand,B (2777) [D78]	4
(02) Nakamura,H (2789) - Carlsen,M (2872) [E20]	5
(03) Gelfand,B (2777) - Anand,V (2773) [D11]	6
(04) Moiseenko,A (2710) - Alekseenko,K (2459) [D20]	8
(05) Kashlinskaya,A (2433) - Charochkina,D (2359) [B22]	9
(06) Artemiev,V (2595) - Bajarani,U (2504) [C14]	11
(07) Moiseenko,A (2710) - Ponkratov,P (2611) [D17]	12
(08) Girya,O (2438) - Goryachkina,A (2428) [A37]	13
(09) Artemiev,V (2595) - Belous,V (2569) [E17]	15
(10) Negi,P (2633) - Ragger,M (2646) [B19]	16
Editorial staff:	18

Dear readers!

**ChessZone Magazine is open for your advertising materials.
We have various ad packages at affordable rates!**

**We're also interested in cooperation with advertising agencies,
and could offer great commissions for anyone
who could bring an advertisers to us.**

**Please contact us for details
chesszone@ya.ru**

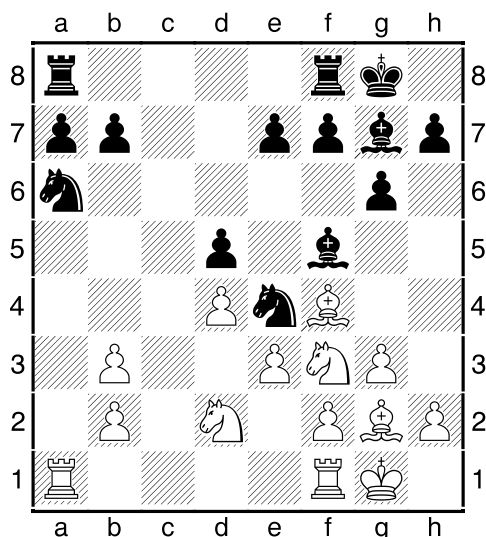
Games

(01) Carlsen, M (2872) - Gelfand, B (2777) [D78]

Zurich Chess Challenge Zurich SUI (1), 30.01.2014

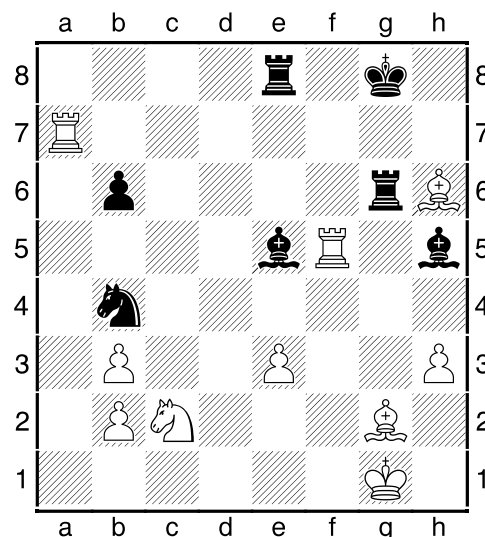
[IM Sitnikov, A]

1.c4 g6 2.d4 Nf6 3.Nf3 Bg7 4.g3 c6 5.Bg2 d5 Roundabout way rivals came to a very popular nowadays Gruenfeld defence. **6.Qa4** White inventing new tricks to get off the main paths, because the main options developed very deeply... **6...0-0 7.0-0 Nfd7 8.Qc2 Nf6N** An interesting method. Black doesn't consider this "running around" loss of time, as the white queen soon falls under the tempo after the bishop developed to f5. [Also recommended a simple **8...d:c4!**? **9.Q:c4 e5** with full equal position. Knight can go in play through a6 --- so went the game Barlov, D - Seirawan, Y / YUG-chT 1992] **9.Bf4 Bf5 10.Qb3 Qb6 11.Nbd2 Ne4?!** Too ambitious. Unclear what prevented black to enter the second knight into the battle [11...Nbd7 fully solving all problems] **12.e3 Q:b3** [After **12...Nd7 13.c:d5 Q:b3 14.a:b3 c:d5 15.N:e4 B:e4 16.Rfc1 Rfc8 17.Bh3!** white could take the initiative even in such simple endgame] **13.a:b3 Na6 14.c:d5 c:d5**



15.g4!! Commentators immediately dubbed this throw by the move of the tournament! Boris long thought, but it is very difficult to understand arise complications... **15...B:g4** The most principle! [15...N:d2

16.N:d2 Be6 17.Ra5f Rfd8 18.Rc1± 16.N:e4 d:e4 17.Nd2 f5 18.f3 e5? Black with his last move is giving to understand that he is ready to "suffer" completely "free". [In case of "natural" **18...e:f3 19.N:f3 Rad8 20.Ne5 B:e5 21.B:e5 Rd7 22.Rfc1 Nb4** white has full compensation for the pawn, but not more] **19.d:e5 e:f3 20.N:f3 Rae8 21.Ra5!** White is not going to lose the pawn again... **21...Nb4 22.Nd4 b6 23.R:a7 B:e5 24.Bh6! Rf6** [If **24...Rf7 25.Ra4! Bd6 26.Rfa1 f4 27.Ra8 Rfe7 28.Bf1!** the bishop goes on extremely dangerous for black diagonal a2-g8.] **25.h3 Bh5 26.Nc2! g5** [26...N:c2 27.Bd5+ Rfe6 28.Rc1+-] **27.B:g5 Rg6 28.R:f5 h6 29.B:h6**



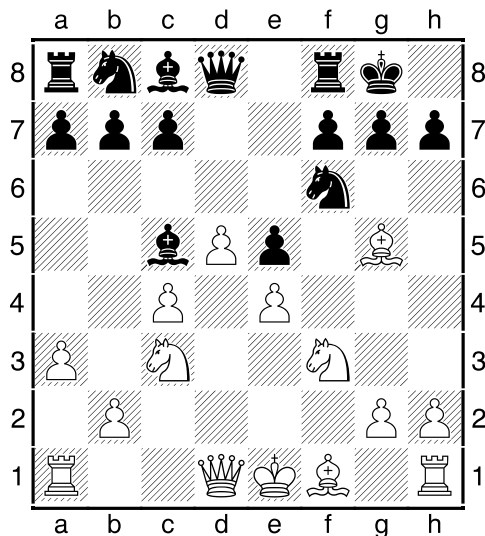
29...R:h6? [Black misses a unique chance for salvation, apparently, absolutely hopeless position: **29...Bf3!! 30.R:f3** (more properly **30.Rg5 R:g5 31.B:g5 B:g2 32.N:b4 B:h3 33.Nd5 Rf8 34.Ne7+ Kg7 35.Nc6+ Kg6 36.N:e5+ K:g5 37.Rb7 Rf5 38.Nc4** though the white hard to win - enemy pieces are very active) **30...N:c2 31.Rf2 Ne1! 32.Re2 Bg3! 33.Ra4! Kh7! 34.Bf4 B:f4 35.R:e1 B:e3+ 36.Kh1 Kg7** with real chances to draw] **30.N:b4 B:b2 31.Nd5 Kh8 32.Rb7 Bd1 33.b4 Rg8 34.Ne7 Rd8 35.Be4 Bf6 36.R:b6** Winning third pawn!.. **36...Kg7 37.Rf2! 1-0**

(02) Nakamura,H (2789) - Carlsen,M (2872) [E20]

Zurich Chess Challenge Zurich SUI (3), 01.02.2014

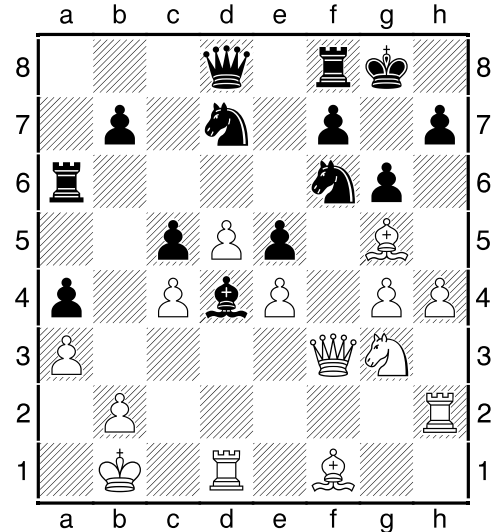
[IM Sitnikov, A]

1.d4 Nf6 2.c4 e6 3.Nc3 Bb4 4.f3 d5 5.a3 Be7 New world champion can play almost any debut and every its branch. [In the World Championship match against Anand, Magnus preferred 5...B:c3+ 6.b:c3 c5 7.c:d5 e:d5 8.e3 c4! and black initiative on queenside further outweighed white attack on the opposite side of the board] **6.e4 d:e4 7.f:e4 e5 8.d5 Bc5 9.Bg5 0-0 10.Nf3**

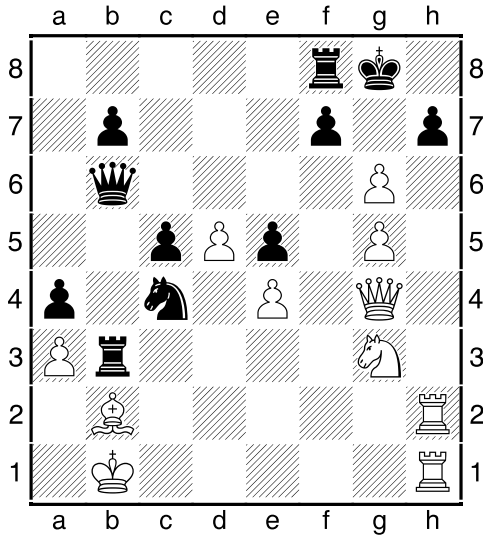


10...Bg4N [Looks good 10...a5 11.Qd2 Qd6 12.Be3 Na6 13.Bd3 Bd7 14.0-0 Qb6 15.Rae1 Ng4 16.Nd1 f5 with a wonderful play for black / Kantorik, M (2289) – Solodovnichenko, Y (2430) / SVK–ch op 2000] **11.h3 B:f3 12.Q:f3 Nbd7 13.0-0!** And again versatile castlings! But we must recognize that the white having space advantage, two bishops, as well as the half-open line f, will be much easier to attack. Interestingly, what has eluded the world champion in preparation for the game, because the whole concept of black in this option clearly does not inspire confidence... **13...Bd4 14.Ne2!** Multifaceted move! White attacks enemy bishop, at the same time the knight is ready to go on through g3 to f5 or h5, unnerving black king or his closest courtiers... **14...c5 15.g4 a5** Black problem that he can't develop offensive, while

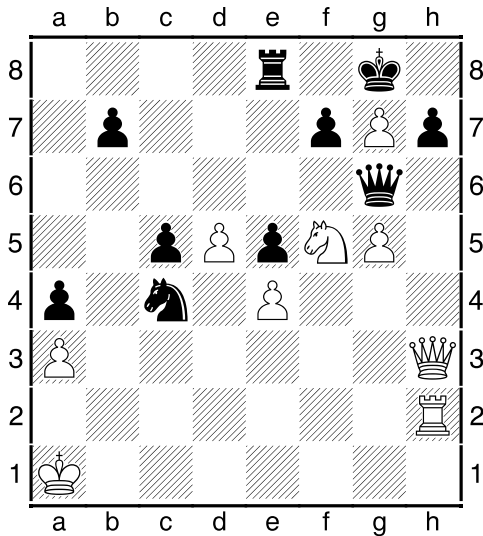
white's attack is "like clockwork". [Both when 15...a6 16.Kb1 Qb8 17.Ng3 b5 18.Rh2! b4 19.a4! black "attack" deadlocked before it's begun] **16.Kb1 Ra6 17.Ng3 g6 18.h4 a4 19.Rh2!+-**



It is surprising, but black's position is already lost, although he made no big mistakes. White's attack develops inexorably: h4–h5, doubling heavy pieces vertically h and defeat the enemy defensive redoubts. With this understanding, Magnus starts incomprehensible pieces dance, trying to distract the opponent to the queenside... **19...Qa5** [19...Rb6] **20.Bd2** [20.Bc1!? Rb6 21.h5 Rb3 22.Rd3] **20...Qc7 21.g5 Ne8 22.h5 Rb6 23.Bc1 Rb3 24.Qg4! Nb6 25.Be2 Nd6 26.Rdh1?!** White's attack develops naturally and easily. But here he begins to complicate the achievement of victory. [Won direct 26.h:g6 f:g6 (26...Nb:c4 27.B:c4 N:c4 28.g7! K:g7 29.Nh5+ Kh8 30.Nf6+-) 27.Rdh1 Rf7 28.Qe6 Kf8 and here the spectacular jump completes the rout 29.Nf5! g:f5 30.g6] **26...B:b2** Although this move objectively leads to defeat, still after a piece sacrifice going "revival" in the black camp. **27.B:b2 Nb:c4 28.B:c4 N:c4 29.h:g6 Qb6**

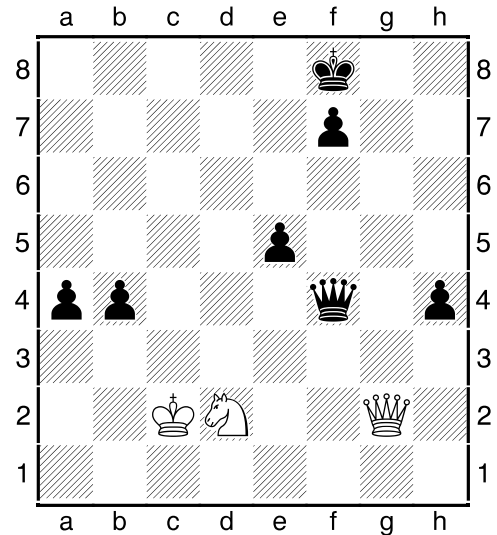


30.g7 Once "on the spot" won [30.g:f7+! R:f7 31.Nh5! R:b2+ 32.Ka1! Qb3 33.Qc8+ Rf8 34.Nf6+ with checkmate in two moves] **30...Rd8 31.Qh4 R:b2+ 32.Ka1 R:h2 33.R:h2 Qg6 34.Nf5 Re8 35.Qg4 Qb6 36.Qh3 Qg6**



37.d6?? Black – full zugzwang. So why white rush and lose such a huge advantage?! [Many commentators using electronic devices found nice win 37.Qf1 N:a3 38.R:h7!! Q:h7 39.Nh6+ Q:h6 40.g:h6+–; Given that any move here only worsen the black situation, white can wait: 37.Ka2! b5 38.Ka1! b4 39.d6 N:d6 40.N:d6 Rd8 41.Nf5 and the curtain can be closed] **37...N:d6 38.N:d6 Rd8 39.Nc4?!** Another careless movement. [Probably only here

Nakamura was horrified to find that the planned 39.Nf5?? Rd1+ 40.Kb2 Qb6+! 41.Kc2 Qb1+ 42.Kc3 Qb3#; Chance to win – only by non-trivial 39.Nc8! K:g7 40.Ne7 Rd1+ 41.Ka2 Qe6+ 42.Q:e6 f:e6 43.Rh6] **39...Q:e4 40.Qh5??** Last move course – and critical blunder. White attacks the void and simultaneously turn off the queen of the game. [Allowed to stay afloat 40.Ne3!] **40...Rd3!-+** The champion doesn't miss such opportunities! Despite witty opponent resistance, Carlsen by iron hand brings the game to win: **41.Rh4 Qf5! 42.Qe2 b5! 43.Nd2 Q:g5 44.Q:d3 Q:h4 45.Ne4 K:g7 46.Qf3 Qf4 47.Qg2+ Kf8 48.Kb2 h5 49.Nd2 h4 50.Kc2 b4 51.a:b4 c:b4**



52.Qa8+ Kg7 53.Q:a4 h3 54.Qb3 h2 55.Qd5 e4 56.Qh5 e3 57.Nf3 e2 58.Kb3 f6 59.Ne1 Qg3+ 60.Ka4 Qg1 61.Q:e2 Qa7+ 0-1

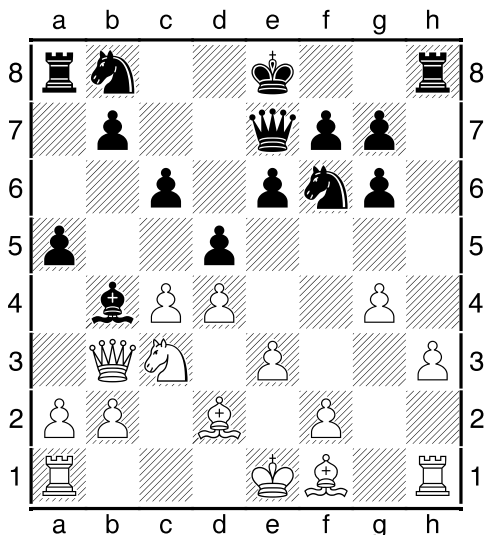
(03) Gelfand,B (2777) - Anand,V (2773) [D11]

Zurich Chess Challenge Zurich SUI (4), 02.02.2014

[IM Sitnikov, A]

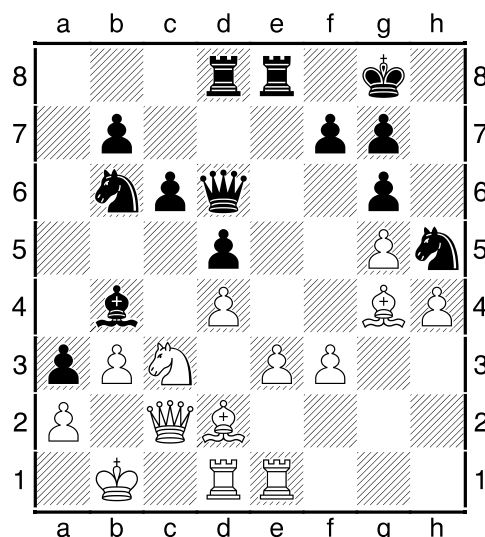
The most significant chess event in February, certainly, became the tournament in Zurich – the strong competition in chess history by average rating of players! **1.d4 d5 2.c4 c6 3.Nf3 Nf6 4.e3** Recently white is increasingly resorting to such "tricks" on the 4th move in the Slav Defense. White's idea is to avoid as "Czech" defence arising

after [4.Nc3 d:c4 (and well-studied Meran constructions, where the c3 knight falls under the "roll forward" b7-b5-b4: 4...e6 5.e3 Nbd7 6.Bd3 d:c4 7.B:c4 b5 8.Bd3 Bd6!? – according to the theory, black is all right)] **4...Bg4** Understandable desire to develop the bishop through pawns stockade, but this bishop will be exchanged for white knight soon. [Safer, perhaps 4...e6 and if 5.Nbd2 then possible even 5...c5!? stressing that the best place for queen's knight in Slav defense still on c3.] **5.Nc3 e6 6.h3!** Starting hunting!.. **6...Bh5 7.g4 Bg6 8.Nh4** [In the meeting Caruana – Anand, held the day before, the white chose to determine the situation in the centre immediately: 8.c:d5 N:d5?! 9.Ne5 Bb4 10.Bd2 Nd7 11.N:g6 h:g6 12.a3 Ba5 13.Bg2 g5 14.Qc2 Rc8 15.Rd1 Bc7 16.Ne2 Nf8 17.Qb3 Rb8 18.e4 Nf4 and now white, instead of exchanging dark-squared bishop for knight, after which the game finished a draw, could exchange knights and reach advantage: 19.N:f4 B:f4 20.d5±] **8...Bb4** [Recommended by computers 8...Be4!? 9.f3 Nfd7! 10.Ng2! Bg6 11.h4 h6 12.Qb3 Na6!? 13.Nf4 Bh7 14.c:d5 e:d5 15.B:a6 b:a6 16.Qb7 Qc8 17.Q:c8+ R:c8 18.Kf2! with pleasant endgame for white] **9.Qb3 Qe7N 10.Bd2 a5 11.N:g6 h:g6**

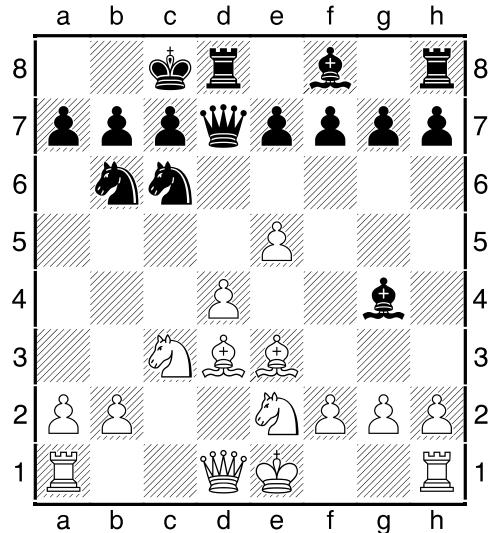
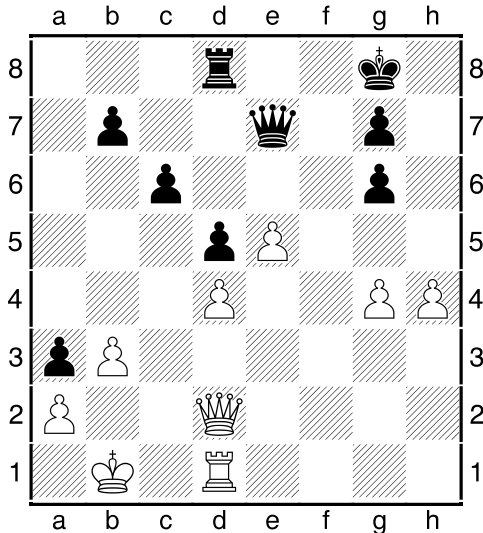


12.c:d5 Unnecessarily white to relieve tension in the center. [It was better just to continue development: 12.Bg2 B:c3 13.Q:c3 Ne4 14.B:e4 d:e4 15.0-0-0]

12...e:d5 13.f3 a4 14.Qc2 a3 15.b3 Nbd7 [15...Na6!? 16.0-0-0 Nc7 17.h4 0-0-0] **16.0-0 0-0?** Serious mistake. Black castles directly under the attack, because the status of g6 pawn – excellent grasp for enemy infantry. At the same time black hardly can open the game on the queenside. White divert the king to b1 and can steal the line 'c'. **17.Kb1 Rfc8 18.h4 Nb6 19.g5** Good move. White distilled "black rider" to the edge of the board and reach a clear advantage. Deserved attention also [19.h5! g5! (19...g:h5? 20.Bd3! h:g4 21.f:g4 g6 22.g5 Nh7 23.e4+-) 20.Qf5 c5 21.h6 g6 22.Qe5 c:d4 23.Q:e7 B:e7 24.e:d4 Bb4 25.Nb5 B:d2 26.R:d2 Re8 27.Re2 R:e2 28.B:e2 Re8 29.Rh2± and white has distinct advantage as an enemy infantryman a3 is captured] **19...Nh5 20.Bh3 Re8 21.Rhe1 Rad8 22.Bg4 Qd6**



The game runs quite unusual for the situation with diverse castling. Instead of mutual attacks on the flanks sides adhere to the "central" strategy! **23.Ne2?** Manifest error, which is difficult to explain. White denied paired bishops, also weakens the dark squares around the king (which is dangerous when partisan on a3) ... **23...B:d2 24.Q:d2 Nd7 25.Nf4?!** Why exchange "Tarrasch knight", wallowing on the edge of the world?! [25.Nc1! Re7 26.Nd3!] **25...N:f4 26.e:f4 f5 27.g:f6 N:f6 28.Re5 N:g4 29.f:g4 R:e5 30.f:e5 Qe7**

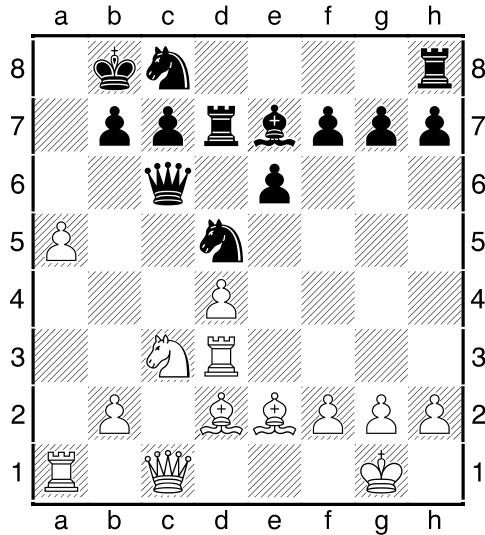


31.Rh1? That h4–pawn weakness is beginning to affect. White's last move – absolutely "child" mistake. It is clear that such "stinginess" lead to no good and he had to fight for the only open line f. [31.Rf1! Q:h4 32.Qf4 Qe7 black can't make progress – his pawns g7 and g6 impaired] **31...Rf8!** **32.h5 Qf7 33.h6 Qf3!-+** Black queen introduced into the enemy camp, and the enemy pawns begin to "crumble". **34.Re1 g:h6 35.e6** [35.Q:h6 Qd3+ 36.Kc1 Rf2 and black mates] **35...Re8 36.g5 Qf5+ 0-1**

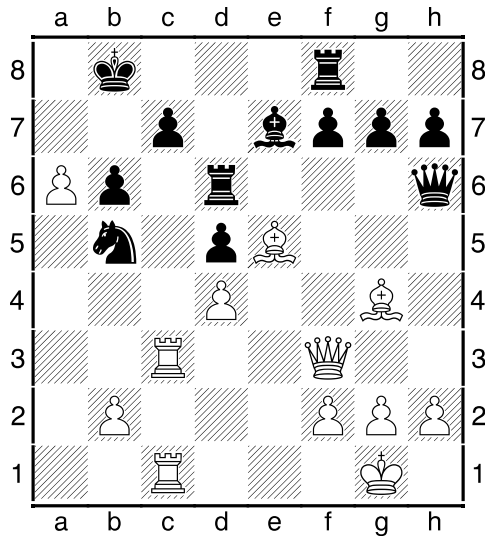
(04) Moiseenko,A (2710) - Alekseenko,K (2459) [D20]
 Moscow Open A Moscow RUS (6),
 06.02.2014
[IM Sitnikov, A]

1.d4 d5 2.c4 d:c4 3.e4 Nf6 4.e5 Nd5 5.B:c4 Nb6 6.Bd3! [Another branch – 6.Bb3 Nc6 7.Ne2 Bf5! 8.Nbc3 e6 9.0-0 Qd7 10.Be3 0-0-0 11.Qc1 Kb8 , and black build quite solidly] **6...Nc6 7.Ne2 Bg4 8.Be3 Qd7 9.Nbc3 0-0-0**

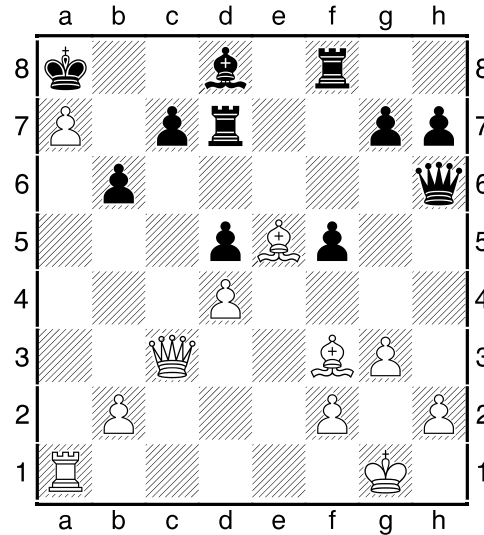
10.0-0N White pretends blundered central pawn. However, he gets strong initiative: **10...N:e5 11.Bb5! Qe6** [If we follow the principle "ate and back": 11...Nc6 12.Rc1 e6 13.Ne4 Kb8 14.f3 Bf5 15.Nc5 then white has more than enough compensation, which can turn into a strong attack. But maybe black should play so.] **12.Qc1?** Carelessness! It was necessary "to frighten" the bishop: [12.h3! Bh5 (12...Nf3+?? 13.g:f3 B:f3 14.Nf4; 12...B:h3?? 13.Nf4) 13.Qc1!±] **12...B:e2?** Going towards opponent's intentions. [If calculate options a little, tactic works on the black side! 12...Nf3+! 13.g:f3 (13.Kh1 g5! 14.B:g5 N:g5 15.Q:g5 Bh6 16.Qh4 Qg6 , and black obviously better) 13...B:f3 14.Rd1 Qh3 15.Nf4 Qg4+ 16.Kf1 g5 17.Nfe2 e5!?, and complications develop in black favor due to unreliability of the white Commander] **13.B:e2±** Here it is necessary to speak not about compensation for the pawn, but the great advantage of white, because black has low development... **13...Nc6 14.Rd1 Nb4** [14...g6?? 15.d5 N:d5 16.Bc4] **15.Nb5** Double blow, and white wins back the pawn... **15...N4d5 16.N:a7+ Kb8 17.Nb5 Rd7 18.Rd3 Qc6 19.Nc3 e6 20.a4!** Position of the knight on b6 – serious irritant for a2 pawn... **20...Bb4 21.a5 Nc8 22.Bd2 Be7**



23.a6 Regardless of material equality, black's position is very bad. His king is in serious violence... **23...b6 24.Qd1 Na7 25.N:d5 e:d5 26.Bg4 Rdd8 27.Bf4 Qf6 28.Be5 Qh6 29.Qf3 Rhf8 30.Rc3 Nb5 31.Rac1 Rd6**



32.g3 "Wicket" certainly can not hurt, but white could enchanting finish the game: [32.R:c7!! N:c7 33.R:c7 K:c7 34.Qc3+ Kb8 35.Qc6!] **32...N:c3 33.Q:c3 Bd8 34.a7+ Ka8 35.Ra1 f5 36.Bf3 Rd7?**



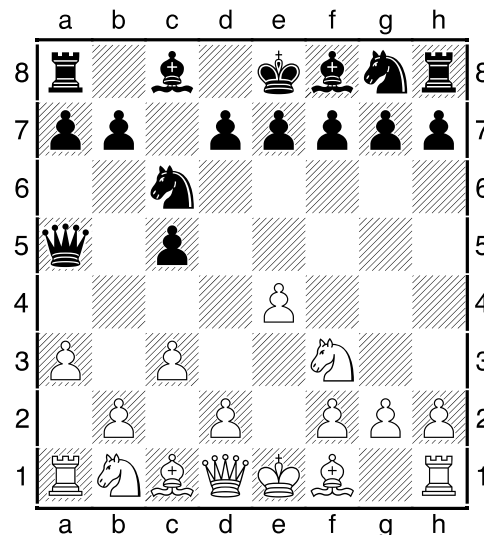
[Harder 36...Re8 37.B:g7 Qe6 38.Be5 c6 39.B:d6 Q:d6 40.b4 b5 , and white has to undergo some "technical work"] **37.B:g7!** Beautiful ending! Distracted rook protection from the d5 pawn or queen from daycare c6 square. **1-0**

(05) Kashlinskaya,A (2433) - Charochkina,D (2359) [B22]

Moscow Open B (6), 06.02.2014

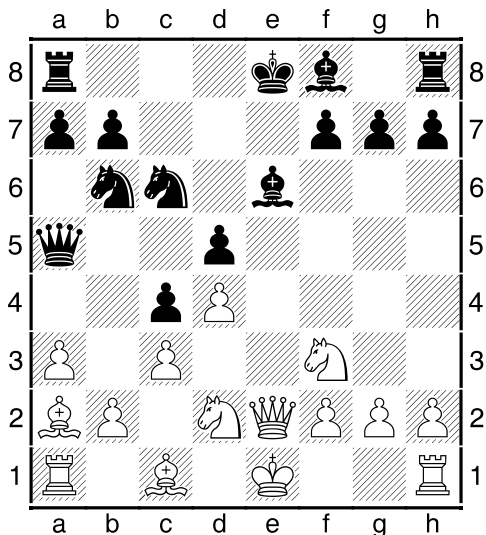
[IM Sitnikov, A]

1.e4 c5 2.Nf3 Nc6 3.c3 Qa5!? 4.a3!



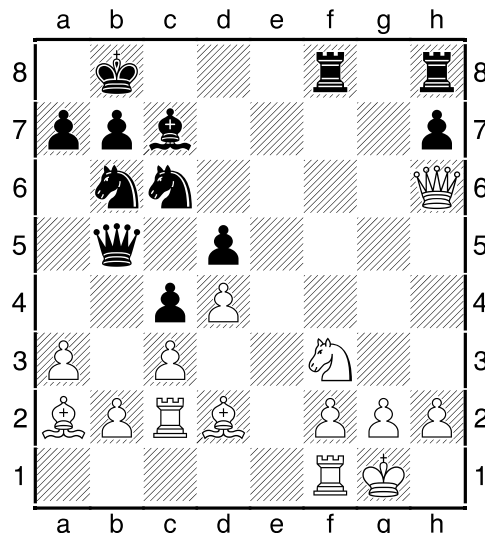
Ideological struggle! Black tries to prevent the standard d2–d4, but white adds to this the possibility of b2–b4. Position met in practice 30 years ago in the famous grandmasters duel. Below, we present the

full text of the memorable battle... **4...Nf6** [4...e6 5.d4 N:d4 6.N:d4 c:d4 7.b4 Qc7 8.c:d4 Nf6 9.Bd3 d5 10.e5 Nd7 11.Ra2! Nb6 12.Rc2 Qd8 13.Qg4 g6 14.Bg5 Be7 15.Bh6 Bd7 16.0-0 Ba4 17.Rc3 a6 18.Rfc1 Rc8 19.R:c8 N:c8 20.Nd2 Bf8 21.Qf4 Na7 22.Nf3 Nc6 23.B:f8 K:f8 24.Qh6+ Kg8 25.h4 Qf8 26.Qf4 h6 27.h5 g5 28.Qf6 Qg7 29.g4! Q:f6 30.e:f6 Kf8 31.Ne5 Ke8 32.B:a6 N:e5 33.d:e5 Kd7 34.B:b7 Rb8 35.Ba6 Ra8 36.Bd3 Bb3 37.b5 Ra4 38.b6 R:g4+ 39.Kh2 Bc4 40.Bg6! Be2 41.f4 Bc4 42.B:f7 and white soldiers tear opponent to pieces / Sveshnikov, E (2515) – Kupreichik, V (2480) / URS Cup 1984] **5.e5 Nd5 6.Bc4N Nb6 7.Ba2** Bishop came to strike abroad, simultaneously renewing pawn threat... **7...c4 8.d4 d6** [Black would be a bit crowded when 8...c:d3 9.b4 Qa6 10.0-0 Nc4 11.Re1 d6 12.e:d6 N:d6 13.a4 Nd8 14.Nd4 e6 15.Bf4 Be7 16.Na3 Bd7 17.Nab5 N:b5 18.a:b5 Qb6 19.Q:d3 – it is difficult to find good move, because castling is not possible due to Nf5 with defeat] **9.e:d6 e:d6 10.Qe2+ Be6 11.Nbd2 d5**

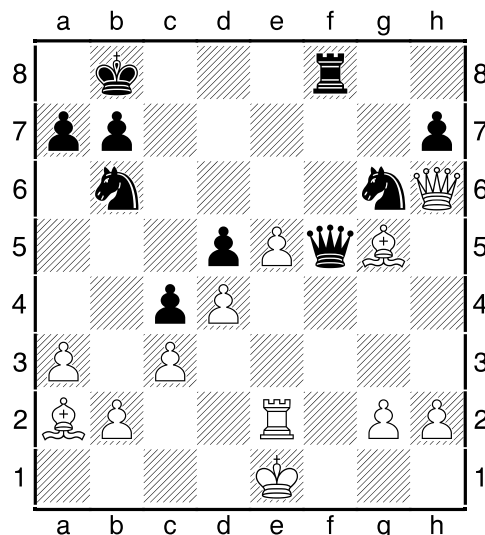


12.Ng5 Such simple way white confront rival hard tasks... **12...0-0-0 13.N:e6 Re8 14.0-0 R:e6** [In case of 14...f:e6 15.Qg4 Nd7 16.Nf3 e5 17.d:e5 Nc:e5 18.N:e5 R:e5 19.Bf4 easy to see how worn black bastions exposed organized hostile army assault] **15.Qf3 Bd6** [Not helped the attempt to organize a defence: 15...Nd8 16.b3 c:b3 17.B:b3 Bd6 18.c4 d:c4 19.N:c4 N:c4

20.B:c4 and white rapidly developing attack on the king] **16.Q:f7 Rf6 17.Q:g7 Rff8 18.Qh6** Now, white must implement material advantage... **18...Bc7 19.Nf3 Qa4 20.Bd2 Kb8 21.Rac1 Qb5 22.Rc2**

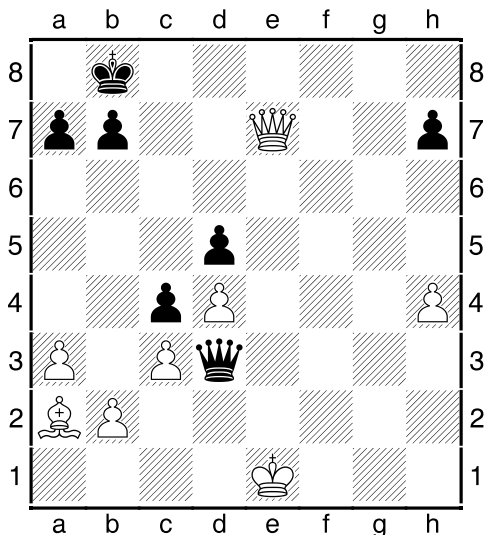


22...Ne7 Without this move, the queen could not go back. However, immediately comes another problem – the major routes overlap. **23.Ne5! Ng6 24.f4 B:e5 25.f:e5 R:f1+ 26.K:f1 Qd7 27.Be3 Qg4 28.Re2 Rf8+ 29.Ke1 Qe4 30.Bg5?! Qf5**

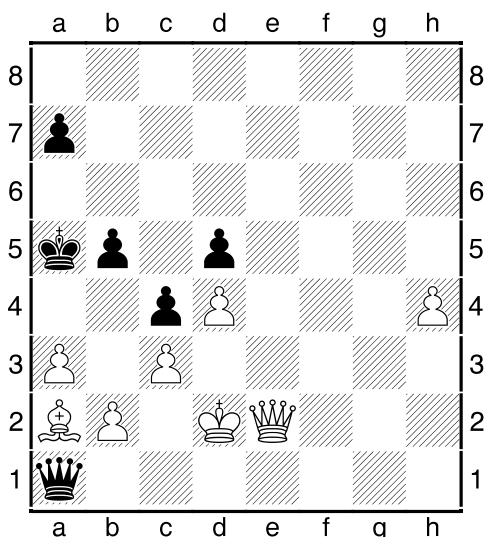


31.e6? This ram was better to launch a bit earlier. Inaccuracies could significantly complicate the life of white monarch... **31...Qf1+ 32.Kd2 Rf2 33.Qh5 Q:g2?** [The correct capture 33...R:g2 34.R:g2 Q:g2+

35.Kc1 Qf1+ 36.Qd1 Qf5 37.Qg1 Q:e6
38.Bb1 black leaving the opponent only a
positional advantage] 34.R:f2 Q:f2+
35.Qe2 Qf5 36.h4 Nc8 37.e7 Nc:e7
38.B:e7 N:e7 39.Q:e7 Qd3+ 40.Ke1



King easily hidden from prosecution...
40...Qg3+ 41.Ke2 Qd3+ 42.Kf2 Qc2+
43.Qe2 Qf5+ 44.Ke1 Qh3 45.Qe5+ Kc8
46.Qh8+ Kc7 47.Q:h7+ Kb6 48.Qg6+ Ka5
49.Qg5 b5 50.Qd2 Qf3 51.Qe2 Qh1+
52.Kd2 Qa1



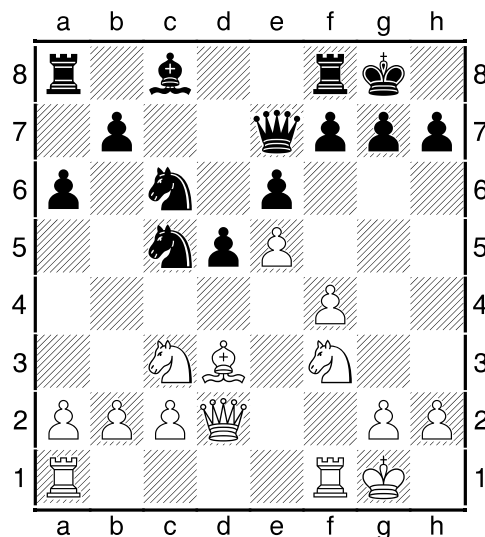
53.Kc2 Elegant solution: white sacrifice his
disgraced bishop, then the black queen
gets into the trap! 53...Q:a2 54.h5 b4
55.a:b4+ Kb6 56.Qe6+ Kc7 57.Qe7+ Kc8
58.Qc5+ Kb8 59.Qa5 1-0

(06) Artemiev, V (2595) - Bajarani, U (2504) [C14]

Moscow Open F Moscow RUS (7),
07.02.2014

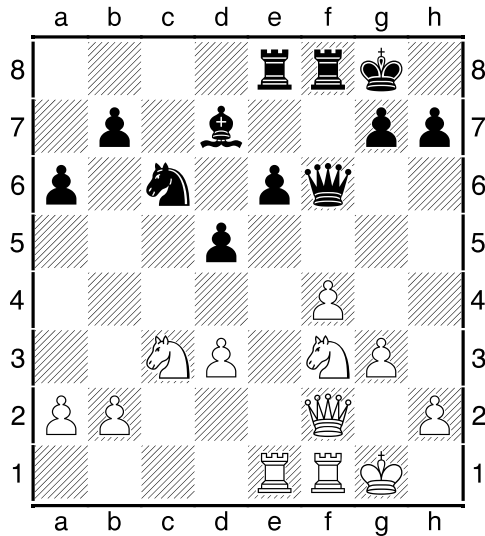
[IM Sitnikov, A]

1.e4 e6 2.d4 d5 3.Nc3 Nf6 [Option 3...Bb4
4.e5 c5 5.a3 B:c3+ 6.b:c3 Ne7 where the
play "general considerations" doesn't work,
and better not to go here without extensive
knowledge and practice] 4.Bg5 Be7 5.e5
Nfd7 6.B:e7 White exchanges dark-
squared bishops, and then expose pawns
on black squares – competent strategy. If
black manages to move Bc8–d7–e8–g6 (or
h5), then no problems for black... 6...Q:e7
7.f4 0-0 8.Nf3 c5 9.Qd2 Nc6 10.d:c5 a6
Preventing white knight maneuvers
through b5. 11.Bd3 N:c5 12.0-0



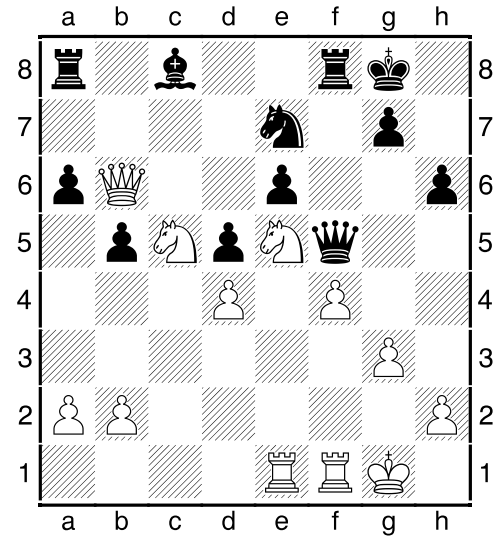
12...f6 13.e:f6 Q:f6 14.g3 [If 14.Ne5!?
N:e5!? 15.f:e5 Qe7 16.R:f8+ Q:f8 17.Rf1
Qe7 18.Ne2 Bd7 19.Nd4 N:d3 20.c:d3 Be8
white has only minimal advantage]
14...Bd7 15.Rae1 Rae8? Serious inaccu-
racy. After all, black cannot push e6–e5
because of his neighboring soldier d5 is
under fire. [Suggests continue planned
bishop route: 15...Be8! and further ex-
change it for any white piece – d3–bishop
or knight f3 – will lead to complete equal
chances] 16.Qf2?! [Probably more accu-
rate to send the rook to f2: 16.Rf2! and
black probably would have to change for
his knight for bishop: 16...N:d3 (16...h6

17.Bf1! and further Bh3 with pressure on ♞.) 17.c:d3 (17.Q:d3 h6 18.Nd1!?) 17...b5 18.d4 and white's advantage is no doubt] **16...N:d3** The simplest. But it was possible to be "non-cooperation": [16...b6!? 17.a3!? (17.Ng5 N:d3 18.c:d3 Qd4=; 17.Ne5 N:e5 18.R:e5 Bc6 19.Rfe1 Nd7 20.R5e2 b5 21.a3 e5=) 17...Rc8 18.Qd2 Rfd8 19.Ne5 Be8 black timely withdrawn "underfoot" bishop, and gets approximately equal position: 20.b4 N:e5! 21.f:e5 Qe7! 22.Ne2 Ne4! 23.Qe3 b5 24.B:e4 d:e4 25.Nc3! Bg6=] **17.c:d3**



17...Qf5?N Persistent black desire to play a passive position without counterplay is difficult to understand. [This point can be considered as a key in the game. Black had to make every effort and calculate the effect of releasing : 17...e5! 18.N:e5 (18.N:d5? Qd6 19.Nc3 Bh3±; 18.f:e5 Qd8! 19.Qc5 Bh3!? 20.Rf2 R:f3 21.R:f3 N:e5 22.Rfe3 Nf3+ 23.Kf2 N:e1 24.Q:d5+ Q:d5 25.R:e8+ Kf7 26.N:d5 N:d3+ 27.Ke3 K:e8 28.K:d3 Kd7=) 18...N:e5 19.R:e5 Q:e5! 20.f:e5 R:f2 21.K:f2 R:e5= and hardly white can make progress in this ending] **18.d4 b5 19.Qd2 Rc8 20.Nd1!** Weakness in the enemy camp is very sensitive, so V. Artemiev directs his cavalry to capture the most important points c5 and e5 ... **20...h6?!** [Much harder 20...Be8! trying to bring the bishop to an active position] **21.Nf2! Ne7?! 22.Nd3 Rc6** Black literally provoke an invasion of enemy cavalry!

23.Nfe5 Naturally!.. **23...Rc7 24.Nc5 Bc8 25.Qa5! Ra7 26.Qb6 Ra8**



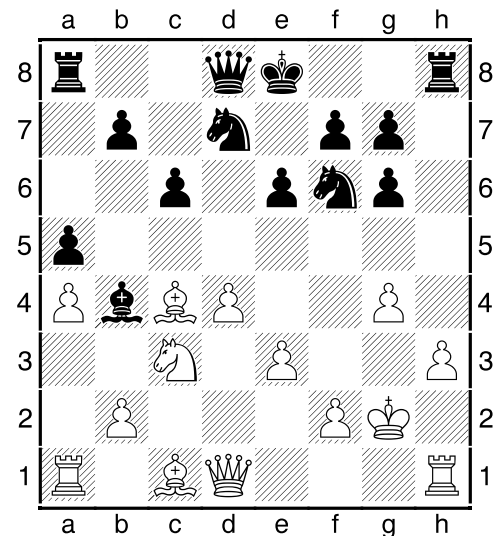
27.g4! Black became unbearably stuffy in his own camp, and he admitted defeat. **1-0**

(07) Moiseenko, A (2710) - Ponkratov, P (2611) [D17]

Moscow Open A (9), 09.02.2014

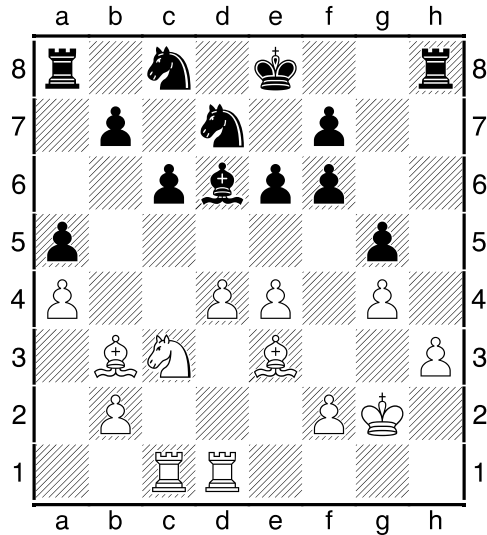
[IM Sitnikov, A]

1.d4 d5 2.c4 c6 3.Nf3 Nf6 4.Nc3 d:c4 5.a4 Bf5 6.Nh4 Bg4 7.h3 Bh5 8.g4 Bg6 9.N:g6 h:g6 10.e3 e6 11.B:c4 Bb4 12.Kf1 Nbd7 13.Kg2 a5

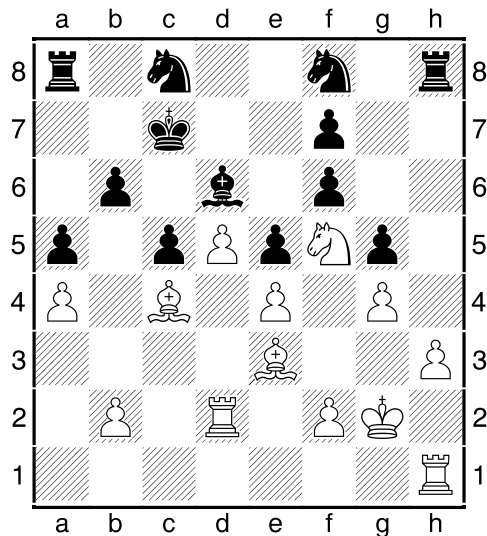


14.Qf3N Queen can move to f3 or to b3. It seems that Qf3 is nice novelty: covering the king and looking forward... **14...g5**

15.Rd1 Nd5 16.e4 N5b6 17.Bb3 Qf6 Not knowing where to determine the king, black offer a transition to the endgame. This intention meets the full approval from the white with a couple of strong bishops and space advantage. [Another alternative also doesn't solve all the problems: 17...Qe7 18.d5 Nc5 19.Bc2 Rd8 20.d:c6 R:d1 21.Q:d1 b:c6 22.Na2 0-0 23.N:b4 a:b4 24.a5 with obvious advantage] **18.Q:f6 g:f6 19.Be3 Nc8 20.Rac1 Bd6**

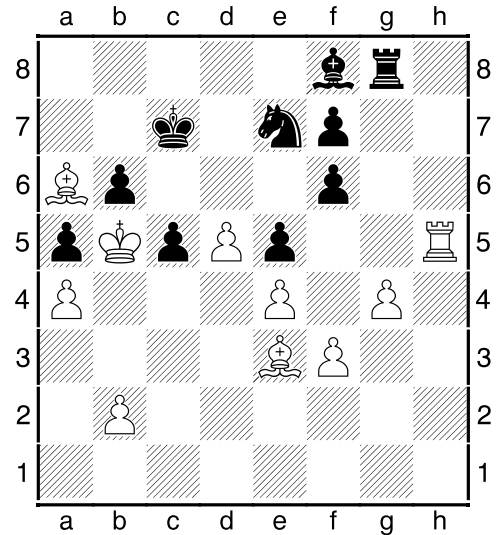


21.d5 After careful preparation white blows up the centre, resulting the gaps in the opponent camp... **21...Ke7 22.Ne2 c5 23.Rd2** Possible is f2-f4, but white hopes to undermine the enemy defense even in the closed position... **23...e5 24.Ng3 b6 25.Nf5+ Kd8 26.Rh1 Kc7 27.Bc4 Nf8**



28.h4 The second front is opened!.. **28...g:h4 29.R:h4 R:h4 30.N:h4 Ne7**

31.Rd1 Nfg6 32.N:g6 N:g6 33.Rh1 Kd7 34.Kf1 Rh8 35.Rh5 Of course, remaining rooks on the board, maintaining tension... **35...Rg8 36.f3 Bf8 37.Ke2** And now it is time to light-squared hegemony... **37...Ne7 38.Bb5+ Kd8 39.Ba6 Kc7 40.Kd3 Ng6 41.Bb5 Bg7 42.Kc4 Ne7 43.Ba6 Bf8 44.Kb5**

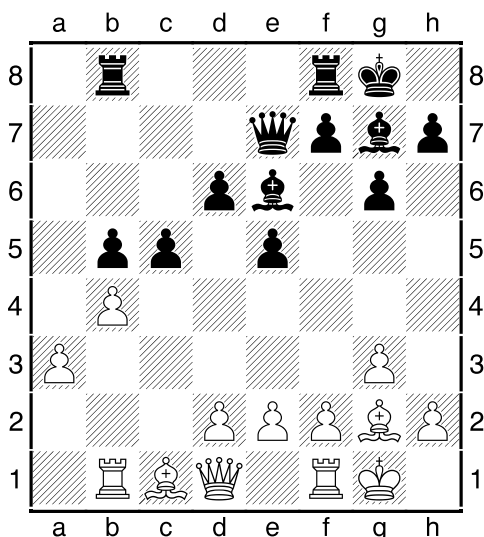


Besides a possible attack on the pawn f7, looming threat of a breakthrough d5-d6. Protection by Ng6-h8 can only be seen as a joke... **44...f5 45.g:f5 Rg2 46.d6+ K:d6 47.K:b6 R:b2+ 48.Bb5 Nc8+ 49.Kb7 Rb3 50.Bh6 1-0**

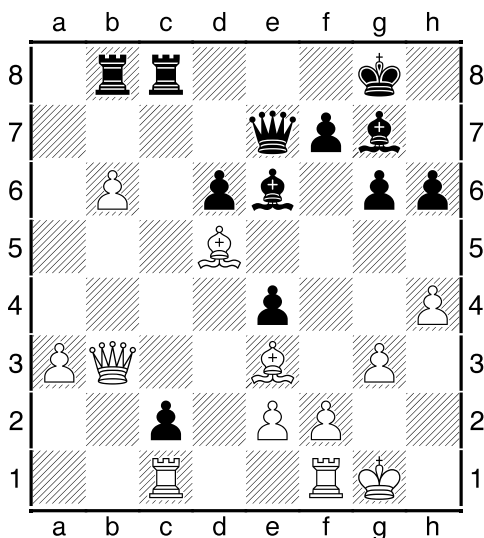
(08) Girya,O (2438) - Goryachkina,A (2428) [A37]

Moscow Open B (9), 09.02.2014
[IM Sitnikov, A]

1.Nf3 c5 2.c4 Nc6 3.Nc3 e5 4.g3 g6 5.Bg2 Bg7 6.0-0 Nge7 7.Ne1 d6 8.Nc2 0-0 9.Ne3 Be6 10.Ned5 Rb8 11.a3 a6 12.b4 b5 13.c:b5 a:b5 14.Rb1 N:d5 15.N:d5 Ne7 16.N:e7+ Q:e7

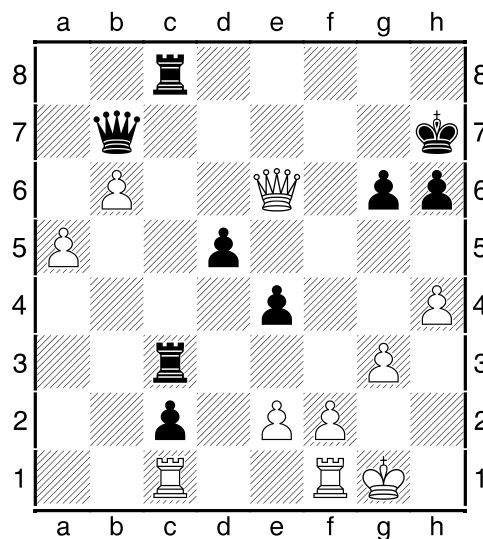


17.d3N As a result of the opening, the situation is calm. Black can try to seize the initiative, but it should be done very carefully, because after going pawn "e" – the king isn't as reliable as his counterpart... **17...Rfd8 18.h4 h6 19.Be3 c4** Evidence of aggressive intentions. **20.d:c4 b:c4 21.Bd5 Rdc8 22.b5 c3 23.Qb3 c2 24.Rbc1 e4 25.b6**

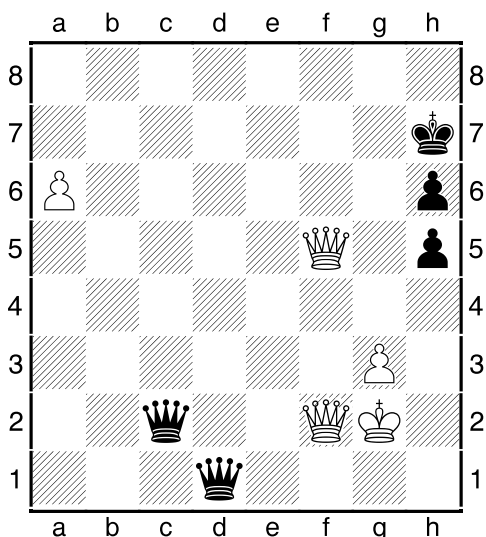


25...Be5? After mutual mileage – appeared some candidates for promotion. In this situation, every tempo weight in gold. Thoughtless bishop move is a severe error. [Should prevent the compound of enemy infantry, as well as support own one – the goal was achieved by 25...B:d5 26.Q:d5 Qe8! (26...Bb2 27.Qd2 B:c1 28.R:c1 Qe6

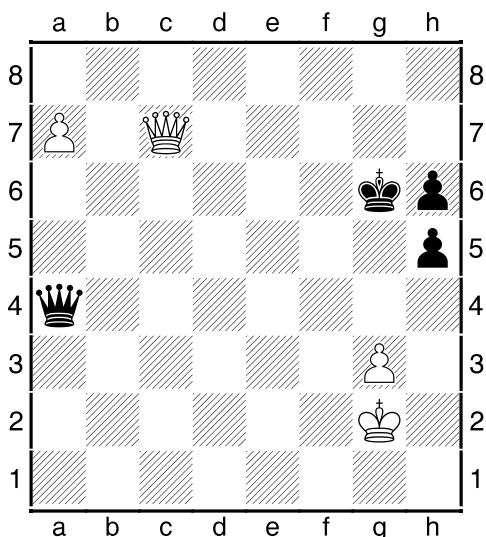
29.R:c2 R:c2 30.Q:c2 Kh7 31.Qc7+-) 27.Q:d6 Qa4 28.h5 g:h5 29.Kh2 Qc4 30.Qf4 Qc6 31.f3 Bb2 32.f:e4 Rb7 with better chances for black] **26.a4 Rc3 27.B:e6 f:e6 28.Qb4 Qb7 29.Bd4 B:d4 30.Q:d4 Rbc8 31.a5** [In case of 31.Q:d6 R3c6 32.Qf4 Q:b6 33.Q:h6 e5 34.h5 Qa6 35.e3 R8c7 36.Qg5 Q:a4 37.h:g6 Qc4 38.Kg2 Qe2 39.Qd8+ Kg7 40.Rh1 Qf3+ 41.Kg1 K:g6 42.Qe8+ Kf6 43.Rh6+ Kg5 threat Qd1+ binds white forces, and he can not capture the enemy monarch] **31...d5 32.Qf6 Kh7 33.Q:e6**



33...Ra3? The second, now a fatal mistake – black cast adrift Commander. [After the correct 33...R3c6 34.Q:d5 R:b6! 35.Q:b7+ R:b7 36.Ra1 Kg7 37.Rfc1 Kf6 38.Kg2 Ke5 39.a6 Ra7 40.e3 Rc6 41.g4 Kd6 42.Ra2 g5 43.h5 Ke5 44.Ra:c2 R:c2 45.R:c2 R:a6 White keeps the extra pawn in the rook ending, but will it be enough to win?..] **34.f3! e:f3 35.R:f3 R:f3 36.e:f3** Now pawn c2 fails inevitably, and without it black is very sad. **36...d4 37.h5 g:h5 38.Qf5+ Kg7 39.R:c2 R:c2 40.Q:c2 Q:f3 41.Qf2** Even stronger was Qg2, immediately paving the way for own pawns... **41...Qe4 42.Kh2 d3 43.a6 Qe2 44.Kg2 Qc2 45.b7 d2 46.b8Q d1Q 47.Qbf8+ Kh7 48.Q8f7+ Kh8 49.Qf8+ Kh7 50.Q8f5+**



50...Q:f5 51.Q:f5+ Kg7 52.Qe5+ Kf7
53.Qf5+ Kg7 54.a7 Qa4 55.Qe5+ Kg6
56.Qd6+ Kg7 57.Qc7+ Kg6 58.Qd6+ Kg7
59.Qc7+ Kg6



60.Kf3 All subjects are under heavy guard,
and the leader rushes into triumphal pro-
cession... 60...Qd1+ 61.Ke4 Qe2+ 62.Kd5
Qf3+ 63.Kc5 Qe3+ 64.Kb5 Qb3+ 65.Ka6
Qf3 66.Qb6+ Kf5 67.Qb1+ Kg4 68.Qg6+
Kh3 69.Qd6 Kg2 70.Kb6 Qe3+ 71.Kb7
Qb3+ 72.Kc7 1-0

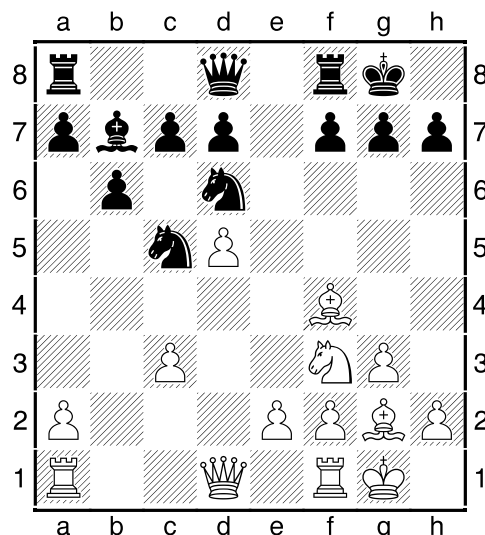
(09) Artemiev, V (2595) - Belous, V (2569) [E17]

Moscow Open F (9), 09.02.2014

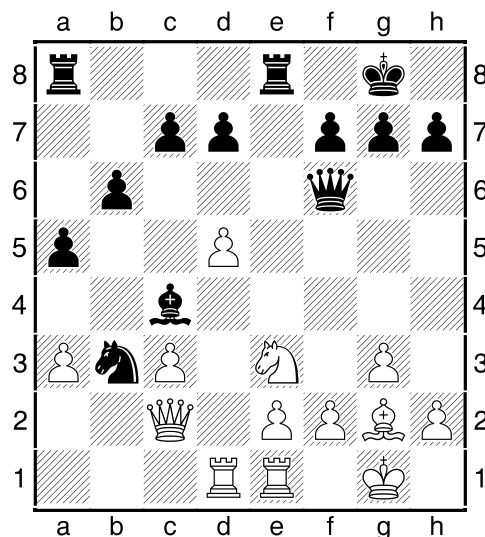
[IM Sitnikov, A]

1.c4 Nf6 2.Nf3 e6 3.g3 b6 4.Bg2 Bb7 5.0-0 Be7 6.d4 0-0 7.d5 e:d5 8.Nh4 Ne4 9.c:d5 Nd6 10.Nf3 Bf6 11.Nc3 Na6 12.Bf4

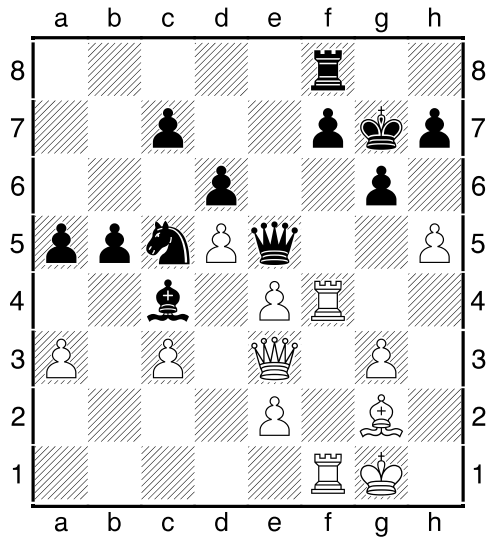
B:c3 13.b:c3 Nc5N



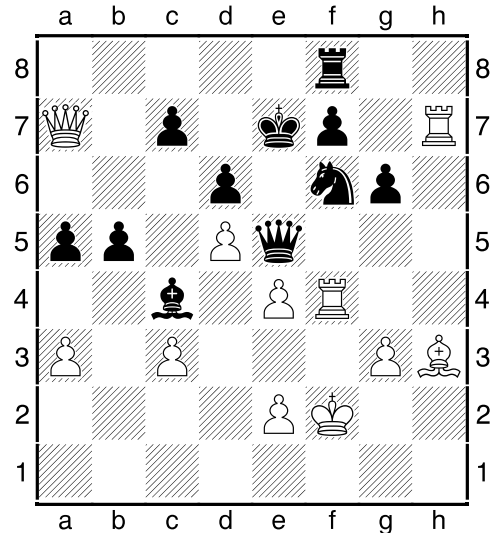
[Earlier met 13...Re8 14.Nd4 Nc5 15.Nb3 Nce4 16.Rc1 a5 17.f3 a4 18.f:e4 a:b3 19.B:d6 b2 20.Rb1 c:d6 21.R:b2 Ba6 22.a4 Bc4 23.Rb4 Qc7 24.Bf3 Ra5 25.Qd4 on the board arose a curious position where the pawn wall completely cut off the black bishop from the kingside – white easily throw his troops and win a direct assault / Fier, A (2573) – Iturrizaga, E (2656) / Latin Cup 2011] **14.Qc2 Qf6 15.Nd4 Rfe8 16.Rfe1 Ba6 17.Rad1 Qg6** In the end-game black could freely use the outposts and numerical superiority on the queenside. **18.Qc1 Bc4 19.a3 a5 20.B:d6** The black cavalry has many ways for attack, so white decides to neutralize it... **20...Q:d6 21.Nf5 Qf6 22.Ne3 Nb3** [Also gives a good play 22...Bb3 23.Rd4 b5 – but black tries positional sacrifice] **23.Qc2**



23...R:e3!? 24.f:e3 d6? Serious error – the pawn overlaps highway which could be useful for the black queen to attack weak pawns. [The situation called for concrete action: 24...Re8 25.Rf1 Qe7! 26.Kh1 (26.d6 Q:e3+ 27.Kh1 c6 28.Rf4 Q:e2 29.Q:e2 B:e2 30.Re1 Kf8=) 26...Q:a3 27.Rf4 b5 28.Qf5 Qe7 29.Re4 Qd8 and the black passed pawn is already going to awards] **25.Rf1 Qe5 26.e4 g6 27.Rf4 Rf8 28.Rdf1** Now things are moving according to the scenario of game Fier – Iturrizaga ... **28...Kg7 29.h4 Nc5 30.Qd2** Black freaks will not soon return to the aid of his king... **30...b5 31.h5 Nb3 32.Qe3 Nc5?**



[More gripping defence: 32...B:d5 33.h:g6 Be6 34.g:h7 Qc5 35.Q:c5 N:c5 36.Rb1 Bd7 37.e5 d:e5 38.Rh4 Rh8 39.c4 although there white gradually undermines the enemy bastions] **33.h:g6?!** [White passes by quick and impressive victory: 33.h6+ Kg8 34.Rf5! Qe7 35.Qd4 f6 36.R:f6 R:f6 37.R:f6 Nb3 38.Qf2 Nc5 39.Bh3 a4 40.Be6+ N:e6 41.R:e6 Qf8 42.R:g6+ h:g6 43.h7+] **33...h:g6 34.Rh4 Kg8 35.Kf2 Re8 36.Rfh1** Of course, here the black monarch days are numbered... **36...Kf8 37.Rh7 Ke7 38.R1h4 Nd7 39.Rf4 Rf8 40.Bh3 Nf6** [40...Nc5 41.Qf3 Kd8 42.Qg4 f5 43.Q:g6 N:e4+ 44.R:e4 Q:e4 45.Qg7+-] **41.Qa7**



41...g5 42.Q:c7+ Ke8 43.Qc8+ Ke7 44.Qb7+ Ke8 45.R:f6 Q:f6+ 46.Bf5 1-0

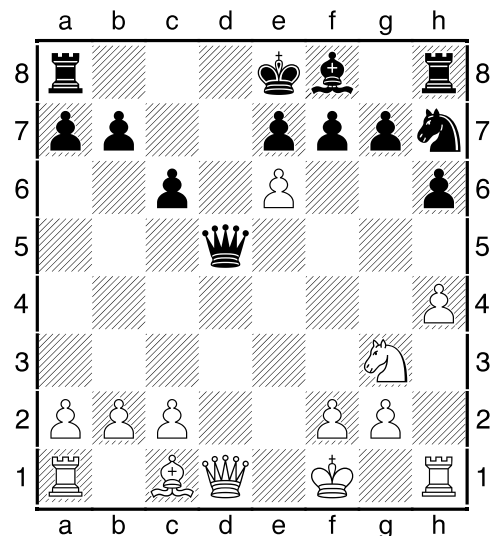
(10) Negi,P (2633) - Ragger,M (2646) [B19]

International Casino Open Graz (5), 17.02.2014

[IM Sitnikov, A]

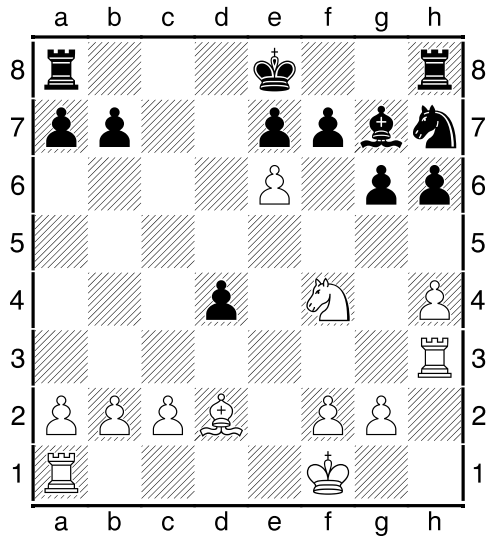
1.e4 c6 2.d4 d5 3.Nd2 d:e4 4.N:e4 Bf5 5.Ng3 Bg6 6.h4 h6 7.Nf3 Nf6 8.Ne5 Bh7 9.Bd3 Nbd7 10.B:h7 N:e5 11.d:e5 Qa5+

The basic idea of black – to deprive the opponent castling. **12.Kf1 N:h7 13.e6** An exact reply that leads to mutual pedestrian walks of kings... **13...Qd5**

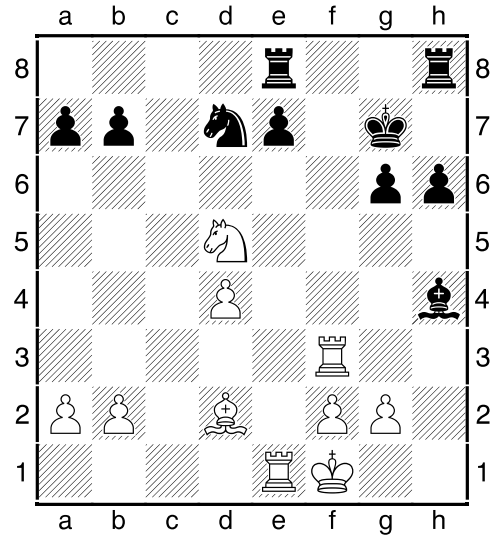


14.Q:d5N [14.e:f7+ Q:f7 15.Ne4 Nf6 16.N:f6+ Q:f6 17.Rh3 e6?! (needed ♖)]

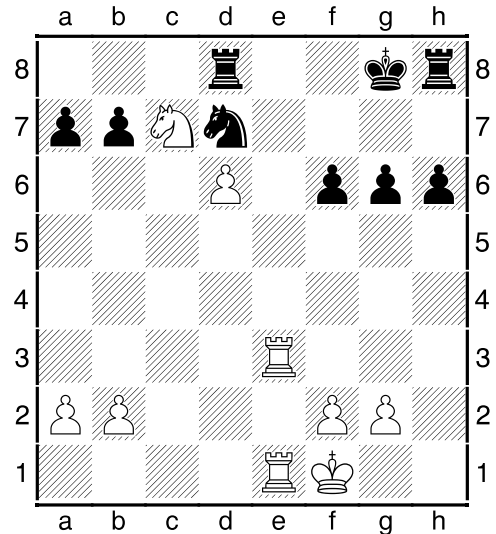
18.Be3 Be7 19.Bd4 Qg6 20.Rg3 Qf5
21.R:g7 Rf8 22.Qg4 and white won soon /
Adams, M (2740) – Khenkin, I (2605) / 41st
GM 2013] **14...c:d5 15.Ne2!?** Interesting
idea – to seal black pieces on kingside
starting lines... **15...g6?!** [Better yet
15...f:e6 16.Nf4 Nf6 17.Ng6 Rg8 18.Bf4
and to release the black can bring back the
pawn by e6–e5 at right moment, and then
develop the bishop] **16.Nf4 d4 17.Bd2 Bg7
18.Rh3!**



From this moment the things are practi-
cally forced... **18...Nf8 19.e:f7+ K:f7
20.Rf3 Bf6 21.Re1 Nd7** [In case of
21...Rd8 22.Bb4 Nh7 23.Ne6 Rd7 24.N:d4!
R:d4 25.R:e7+ Kg8 26.R:b7 R:h4 27.Ra3
Rd4 28.Ra:a7 white pawns easily reach
the cherished goal] **22.Nd5 Rae8 23.c3
Kg7 24.c:d4 B:h4**



25.Bc3 White chooses the most elegant of
several ways to win, pounding the oppo-
nent army to outskirts... **25...Bf6 26.Nc7
Rc8 27.d5! Kg8 28.B:f6 e:f6 29.d6 Rd8
30.Rfe3**



30...Ne5 [Rook activation didn't help:
30...Rh7 31.Re8+ R:e8 32.R:e8+ Kf7
33.Rd8 Ne5 34.f4 Nc6 35.Rd7+ Kg8
36.R:h7 K:h7 37.Ne6 – pawn unstoppable]
**31.f4 Nc6 32.Re8+ Kf7 33.R1e7+ N:e7
34.R:e7+ Kg8 35.Ne6 1-0**

Editorial staff:

IM Anton Sitnikov (ELO 2497)

IM Timofey Iljin (ELO 2507)

IM Anatoliy Polivanov (ELO 2356)

IM Tarlev Konstantin (ELO 2520)

IM Sergey Perun (ELO 2345)

Dmitry Posokhov (ELO 2294)

Chief editor **Roman Viliavin (ELO 2248)**

email: chesszone@ya.ru