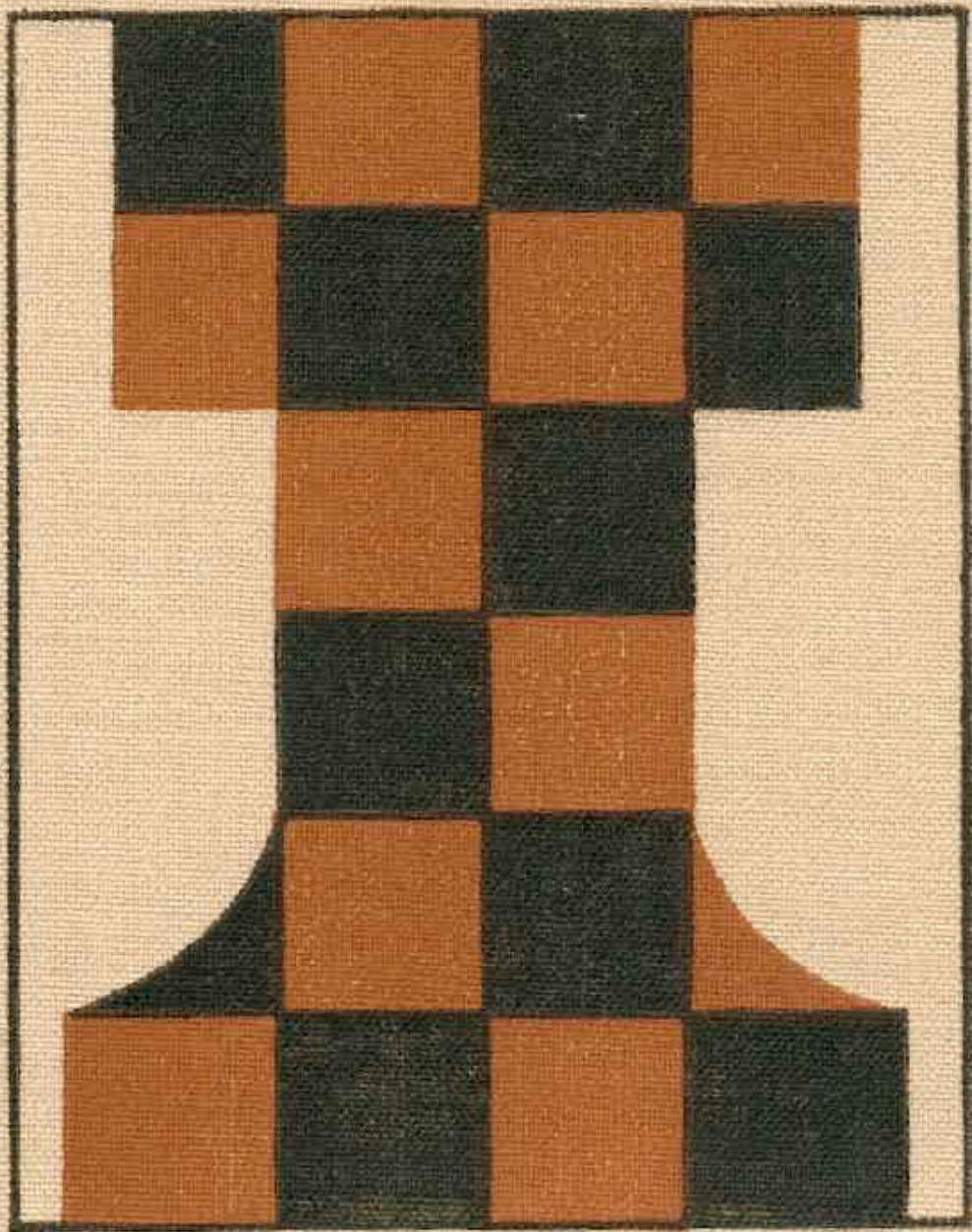


# ChessZone Magazine



## Table of contents: # 02, 2011

Games .....	4
(01) Nakamura,Hikaru (2751) - Shirov,Alexei (2722) [C78].....	4
(02) Wojtaszek,Radoslaw (2726) - Li Chao (2649) [D72].....	6
(03) Le Quang Liem (2664) - Spoelman,Wouter (2547) [D16] .....	7
(04) Nyzhnyk,Ilyya (2530) - Kazhgaleyev,Murtas (2637) [E94] .....	9
(05) Ni Hua (2645) - Dzhumaev,Marat (2493) [B51] .....	11
(06) Zhou Weiqi (2573) - Cao,S (2558) [E17].....	12
(07) Anand,Viswanathan (2810) - Wang,Hao Yuan (2731) [E25].....	14
(08) Wang,Hao Yuan (2731) - Grischuk,Alexander (2773) [E63] .....	15
(09) Shirov,Alexei (2722) - Kramnik,Vladimir (2784) [C45].....	16
(10) Giri,Anish (2686) - Nepomniachtchi,Ian (2733) [D85] .....	17
Editorial staff: .....	18

**Dear readers!**

**ChessZone Magazine is open for your advertising materials.  
We have various ad packages at affordable rates!**

**We're also interested in cooperation with advertising agencies,  
and could offer great commissions for anyone  
who could bring an advertisers to us.**

**Please contact us for details**

**[chesszone@ya.ru](mailto:chesszone@ya.ru)**



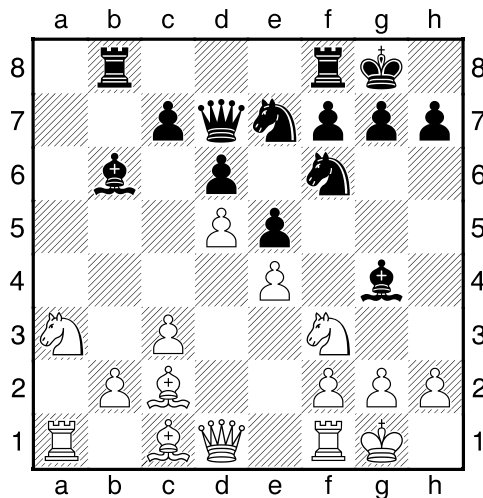
## Games

### (01) Nakamura, Hikaru (2751) - Shirov, Alexei (2722) [C78]

73rd Tata Steel GMA Wijk aan Zee NED (3), 17.01.2011

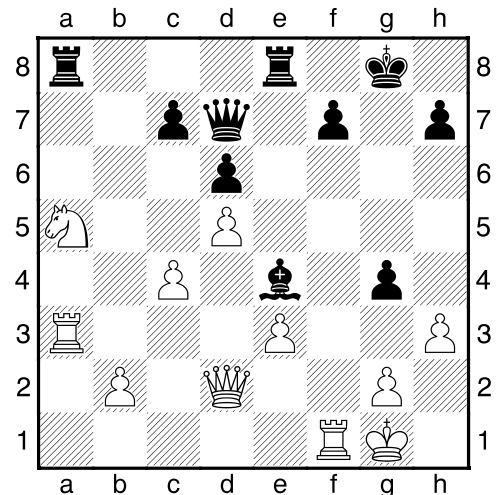
[IM Polivanov, A]

**1.e4 e5 2.Nf3 Nc6 3.Bb5 a6 4.Ba4 Nf6 5.0-0 b5 6.Bb3 Bc5** Neo-Archangelsk variation is one of the main weapons in Shirov's arsenal. **7.c3** [Practice has shown, that 7.Nxe5 Nxe5 8.d4 Bxd4 9.Qxd4 d6 gives sufficient counterplay for Black.] **7...d6 8.a4 Rb8** [Stefanova and Onischuk vindicate 8...Bg4 9.axb5 axb5 10.Rxa8 Qxa8, though after 11.h3 Bh5 12.d3 White is a little bit better.] **9.d4 Bb6 10.axb5** [10.a5!? should be answered by calm 10...Ba7 (as 10...Nxa5 11.Rxa5! Bxa5 12.dxe5 Ng4 13.Bg5 promises a dangerous attack for White)] **10...axb5 11.Na3 0-0 12.Nxb5 Bg4 13.d5!?** "White just wants to relieve the pressure against the centre and enjoy his extra ♖" (c) Wedberg [For 13.Bc2 look Inarkiev-Shirov, CZM 07/2009] **13...Ne7** [13...Nxe4 is untimely: 14.dxc6 Bxf2+ 15.Rxf2 Nxf2 16.Kxf2 Rxb5 17.Bd5 Bxf3 18.gxf3!±, Acs-Blehm, Budapest 2000] **14.Bc2 Qd7** [14...Bxf2+ 15.Rxf2 Rxb5 restores the material balance, but after 16.b4! White gains a serious advantage on the queenside.] **15.Na3N**

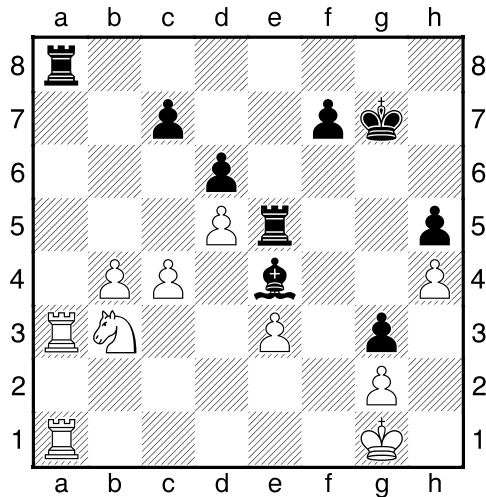


[Earlier met 15.c4 Ng6 16.h3 Bxh3 17.gxh3 Qxh3 18.Ng5 Qg3+ 19.Kh1 Qh4+ 20.Kg2 h6 (20...Nh5 21.Nh3!) 21.Nh3 Nxe4

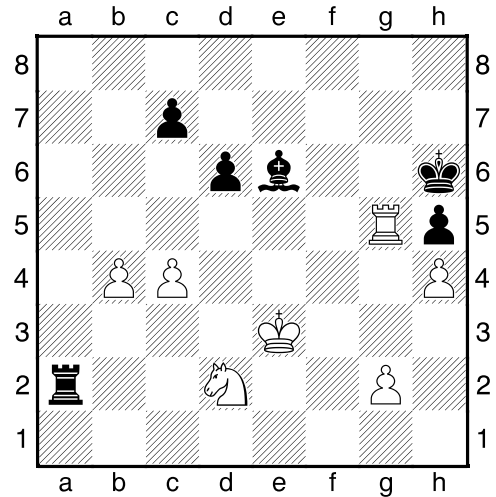
22.Qe2 f5 23.Ra3 Rf6 24.Rh1, and White eventually won, Karjakin-Radjabov, Cap d'Agde 2006] **15...Nexd5!?** [Sacrifice 15...Nxe4 doesn't work out in view of 16.Bxe4 f5 17.Bc2 e4 18.h3 Bh5 19.Ne5! – incidentally, for this reason it's considered, that 14...Qe8 may be even more accurate. Anyway, Shirov fulfills another sacrifice.] **16.h3!** [Transition 16.exd5 e4 17.h3 brings just a draw: 17...Bxf3 18.gxf3 Qxh3 19.fxe4 Qg3+ (19...Ng4 20.Bf4 g5 21.Qd3!) 20.Kh1 Qh3+] **16...Bh5** [Of course, 16...Bxf3 17.Qxf3 Ne7 18.Nc4± doesn't suit Black.] **17.exd5 e4 18.Bg5!** [Decision to give a piece back is a very reasonable one, in the light of 18.g4 Nxe4 19.Ng5 Nf6 20.Qd2 Rbe8! with troubles for ♘g5.] **18...Bxf3** [18...exf3 19.Bxf6 gxf6 20.Qd3!+–] **19.Qd2 e3** Black hasn't any better than part with ♜, so Shirov does it in a most profitable way. [Attempt 19...Ng4 should be met by cold-blooded 20.Nc4! (20.gxf3? Ne5→)] **20.Bxe3** [20.fxe3?! Ne4] **20...Bxe3** [20...Bxd5 21.Bg5!+–] **21.fxe3 Be4** [21...Bxd5 22.Rxf6] **22.Rxf6 Bxc2 23.Rf4 Bg6** All complications resulted in a extra ♜ for White. Before starting a realization, Nakamura improves position for the ♘. **24.Nc4 Ra8** Black tries to impede it. **25.Na5 Rfe8 26.Ra3 Be4 27.c4** [27.Nc6 Rxa3 28.bxa3 looks quite good; now Shirov decides to undertake a desperate countergame.] **27...g5! 28.Rf1 g4**



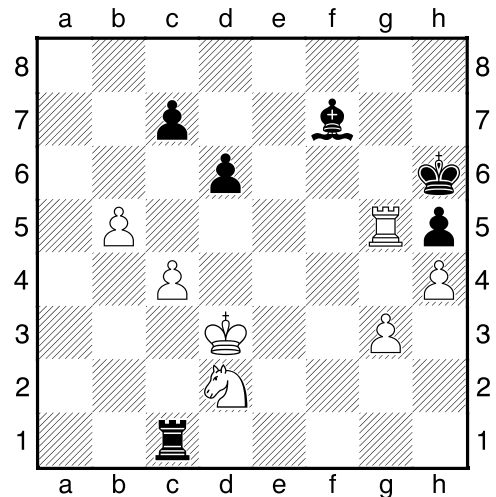
**29.h4** It's clear, that White didn't want to open "g"-line, but now another catches will appear. **29...Qe7 30.Qf2 Bg6 31.b4** To untie ♖'s hands. **31...h5 32.Rc3 Qe5 33.Rb3 Qe4 34.Rc3 Qe5 35.Rfc1 Be4! 36.Qf4** [Realizing, that 36.Nc6 g3! 37.Qf4 Qg7 38.Na5 Re5 is fraught with danger, Nakamura aims at queen's swap; 36.g3!?] **36...g3** Needless to say, that pawn g2 should be blocked. **37.Qxe5 Rxe5** Black has improved own position very much. ♘a5 is trapped (in view of Ra2 opportunity), but White is trying to release it. **38.Ra3 Kg7 39.Rf1** [39.Rcc3 Bg6 40.Nc6 Rxa3 41.Rxa3 Re4!] **39...Ree8 40.Rfa1 Re5 41.Nb3!**



[Surely, not 41.Nc6? Rxa3 42.Rxa3 Rf5 43.Ra2 Bd3-+; but it seems, that 42.Nb3 also has some drawbacks...] **41...Rxa3 42.Rxa3 Bxd5! 43.Nd2!** [But it doesn't! Being avoided trap 43.cxd5 Rxe3 44.Kf1 Kg6 with zugzwang, White is engaging with ♙g3.] **43...Be6** [On 43...Bc6 44.Nf1 Re4 45.Ra7! Rxc4 46.Rxc7 Rc2 47.e4 Bxe4 48.Rxc2 Bxc2 49.b5+- is prepared.] **44.e4** Nevertheless taking on g3. **44...Bg4 45.Rxg3 f5** Attempt to make ♞e5 active, but White is preventing. **46.Re3! Re8** Heading by another route – to "a"-line. **47.Kf2 Ra8 48.exf5 Ra2 49.Rd3** [49.Ke1 Ra1+ 50.Kf2 Ra2=] **49...Bxf5 50.Rd5 Be6 51.Rg5+ Kh6 52.Ke3**

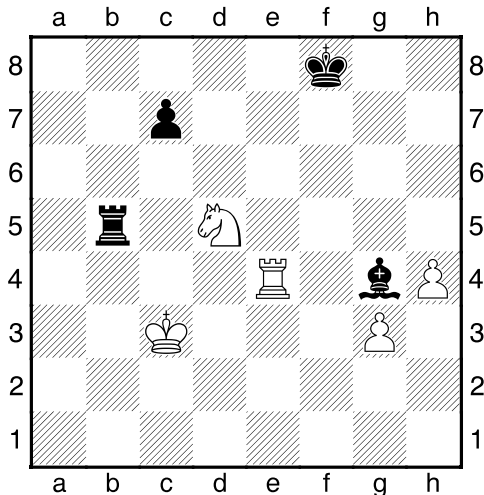


**52...Ra3+?** [It was necessary to entice white ♜ on b5 before this check: 52...Ra4! 53.Rb5 Ra3+ 54.Kd4 (54.Kf2 Rd3) 54...Rg3, and draw will be achieved without special difficulties.] **53.Kd4** Now Black hasn't any object to attack. **53...Ra1 54.g3 Rd1 55.Kc3 Rg1 56.b5** Pushing ♙ forward in case of exchange ones c7 and g3. **56...Rc1+** [56...Bg4 57.Ne4] **57.Kd3!** [Continuation 57.Kb2 Rg1 58.c5 dxc5 59.Rxc5 Rg2 60.Kc1 Rxc3 61.Rc6 Rg6 62.Rxc7 may lead to the ending ♜ + ♞ vs ♜ – Nakamura fairly decided, that there is no such need at the moment.] **57...Bf7**



Intending to check on g6 with further threats by rook. But here comes a surprise. **58.Nb3!** Brilliant idea. ♙c4 is given in order to get on square f5. **58...Rd1+** [58...Bxc4+ 59.Kd2 Rg1 60.Nd4+-; worth

to examine variation 58...Rxc4 59.Nd4 Rc5!? – 60.Nf5+! Rxf5 61.Rxf5 Bg6 62.Ke4 Kh7 63.Kf4 Bxf5 64.Kxf5 Kh6 65.Kf6 with winning endgame.] **59.Ke2 Rb1 60.Nd4** ♘ finally enters into game. **60...Bxc4+ 61.Kd2 d5 62.Nf5+ Kh7 63.Rxh5+** Pair "g" + "h" should bring the victory. **63...Kg6 64.Rg5+ Kf6 65.Ne3!?** [65.Nd4 is also strong, but White conceived a tactical duel.] **65...Rb2+ 66.Kd1!** [More exact, than 66.Kc1 Rxb5 67.Nxc4 Rc5!] **66...Be2+** [66...Rb1+ 67.Kc2 Rxb5 68.Nxc4 Rc5 69.Rg4! dxc4 70.Kc3] **67.Kc1 Rxb5 68.Kd2!** Improving own king's position before Nxd5... **68...Rb2+ 69.Kc3 Rb5 70.Nxd5+ Kf7 71.Re5 Bg4 72.Re7+!**... and worsening enemy one's before Re4. **72...Kf8 73.Re4**



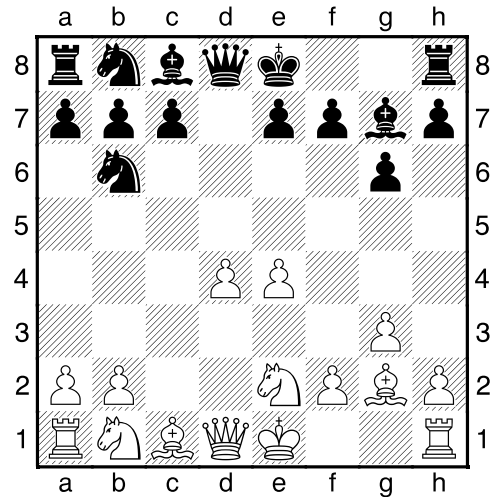
Now Black is standing between two lost endings. Not the most pleasant choice. **73...Bf5** Shirov decides to keep minor pieces for a while. **74.Nxc7 Rc5+ 75.Rc4 Re5 76.Rf4** The rest is quite simple. **76...Ke7 77.Kd4 Ra5 78.Nd5+ Ke6 79.Nc3 Ra8 80.g4 Bh7 81.Ke3 Rc8 82.Ne2 Ke5 83.Ra4 Rb8 84.Nd4** White is skillfully guarding oneself from checks. **84...Rb1 85.Ra5+ Kf6 86.Kf4 Rf1+ 87.Nf3 Bc2 88.Kg3 Rb1 89.Ra6+ Kg7 90.Nd4 Bd3 91.Rd6 Kf7 92.Kf4 Ra1 93.h5** Excellent technique by Nakamura. 1-0

**(02) Wojtaszek, Radoslaw (2726) - Li Chao (2649) [D72]**

73rd Tata Steel GMB Wijk aan Zee NED (3), 17.01.2011

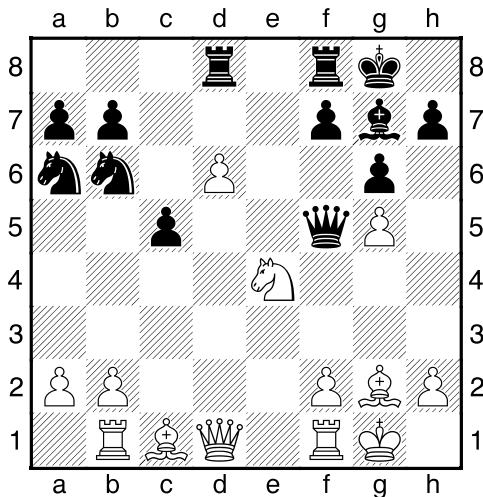
[IM Polivanov, A]

**1.d4 Nf6 2.c4 g6 3.g3 Bg7 4.Bg2 d5 5.cxd5 Nxd5 6.e4 Nb6 7.Ne2**

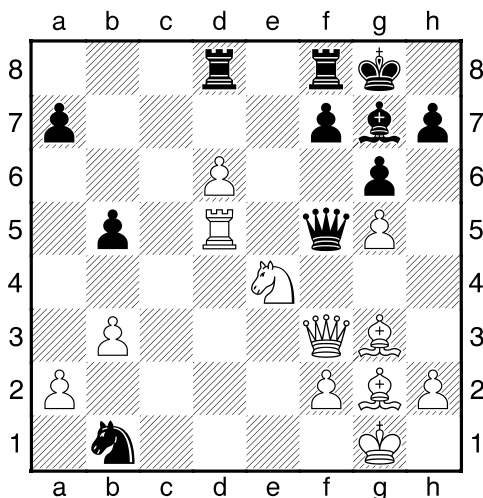


**7...c5** [Such a notable expert in Grunfeld as Jonathan Rowson prefers here 7...e5 8.d5 c6, motivating by reason, that after exchange on d5 bishop g2 can be locked with the aid of f5+e4. But this is the matter of taste, of course.] **8.d5 e6 9.0-0 0-0 10.Nec3** [In contrast to 10.Nbc3, White has another plans for ♘b1.] **10...exd5** [The more common is 10...Na6 11.a4 exd5 12.exd5 Bf5 13.Na3 Nb4, and now White may choose among Be3+Qd2 or a5 – all of that owing to ♘a3!] **11.exd5 Bf5 12.g4!?** [By 12.a4 Na6 game could be brought to usual lines, but White decided to embarrass an opponent after early thrust Bf5.] **12...Bxb1?!** [I don't see any appropriate reason for this capture. More logical was 12...Bd7 13.Nd2 Na6 14.Nde4 Nc4 15.h3 f5! 16.Ng5 Nxb2 17.Qb3 Nd3 18.Bd2?!, Jirka-Dutta, Wch-U20 2002, (18.d6+ Kh8 19.Bd2), and now 18...c4! 19.Qxc4 Ne5 would give a huge edge for Black.] **13.Rxb1 Qd7N** As White's main plan is ♗d5 advancement, Black is getting ready to meet it by rook on d8. **14.Ne4 Na6 15.g5!** Such fixing always will be useful. **15...Qf5** [15...Nxd5? 16.Nc3 Nb6 17.Qxd7 Nxd7 18.Bf4!+- (18.Bxb7?! Rab8 19.Bxa6 Bxc3)]

**16.d6 Rad8**



**17.Qf3!** Wojtaszek finds a good way to support ♖d6 – by bishop from f4. **17...Nc4** **18.Bf4 Nb4?** [18...Nxb2? 19.Bh3 Qd5 20.Nf6+; endgame, arising after 18...Ne5 19.Bxe5 Bxe5 20.Rfd1 Qxf3 21.Bxf3 f5 22.gxf6 Bxf6 is no fun, but maybe it was the best in this situation.] **19.Rfc1!** White has emphasized an error immediately – ♗c5 is no longer defensible. **19...b5** [19...Nxb2 20.Rxb2! Bxb2 21.Rxc5 Qe6 22.Rb5 a5 23.a3+–] **20.b3 Nd5 21.Bg3!** [Ordinary 21.bxc4 Nxf4 22.cxb5 Bd4 23.a4! leaves excellent chances to succeed, but White is not going to abate an initiative, even at the price of exchange.] **21...Na3** **22.Rxc5 Nxb1 23.Rxd5**



**23...Qc8** [Allowing an invasion to f6, but

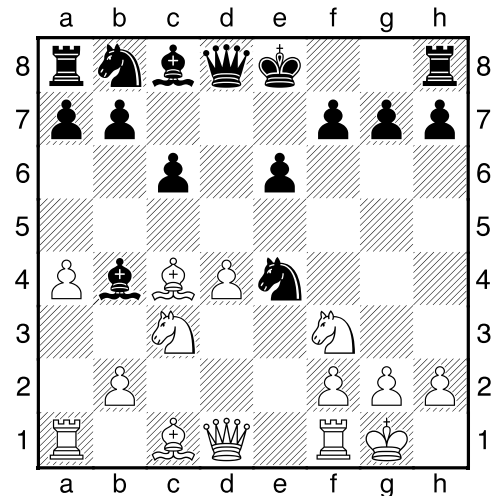
23...Qxf3 24.Bxf3 b4 25.d7 is almost hopeless also.] **24.Nf6+ Kh8 25.h4** [Perhaps, 25.Be5! was even stronger: 25...Qc1+ 26.Qd1 Qxg5 27.Nxh7!+–] **25...Qc2 26.Qd3** [26.h5!?!; but here all the paths lead to Rome.] **26...Qc1+** [26...Qxa2 27.Be4! Na3 28.Qd1, and queen is trapped: 28...Qb2 29.Be5+–] **27.Kh2 Nc3** **28.Rc5 b4 29.d7** Finally ♗ reaches the 7th rank. **29...Qb2 30.Bh3** [30.Bc7? Qxf2] **30...Qxa2 31.Rc8 a6 32.Qe3** There is no defence from Qe8. **32...Qe2 33.Rxc3 1-0**

**(03) Le Quang Liem (2664) - Spoelman, Wouter (2547) [D16]**

73rd Tata Steel GMB Wijk aan Zee NED (3), 17.01.2011

[IM Polivanov, A]

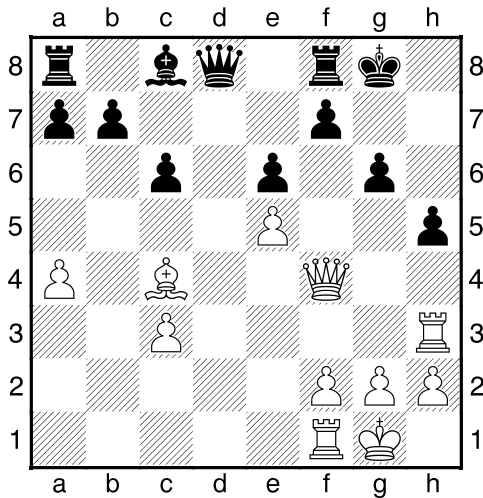
**1.d4 d5 2.c4 c6 3.Nf3 Nf6 4.Nc3 dxc4** **5.a4 e6 6.e4 Bb4 7.Bxc4!?** [For the information about 7.e5 worth to learn game Crush–Lenderman, CZM 07/2010] **7...Nxe4 8.0-0**



**8...Nxc3** [8...Nf6 9.Qe2 0-0 10.Rd1 Nbd7 11.Rd3, Mamedyarov–Postny, EU–chT 2009] **9.bxc3 Be7** ["Grabbing the second pawn would be too greedy": 9...Bxc3 10.Rb1 0-0 (otherwise Ba3) 11.Qd3 Ba5 12.Ng5 g6 13.Qh3 h5 14.g4→ (c) Postny] **10.Ne5** ♞ opens ways for heavy pieces. **10...Nd7 11.Qg4 0-0** [11...Bf6? 12.Nxf7+–] **12.Bh6 Bf6 13.Rae1 Kh8 14.Bf4!?** **N** [14.Bc1 g6 15.Re3 Bg7 16.Rfe1 Nxe5 17.dxe5 f5 18.Qe2 b5?! 19.axb5 cxb5 20.Bxb5 Qb6 21.Ba3 Rg8 22.c4±, Sandi–

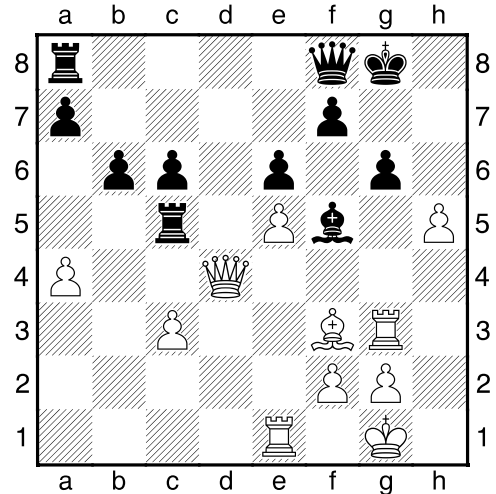


pan-Kobalia, Khanty Mansiysk 2009 – in comparison with 14.Bc1, now move 16.Rfe1 won't be needed, but it will be no Ba3 opportunity.] **14...g6** Defending as in previous annotation. **15.Re3 Bg7 16.Rh3** Nxb6 is threatening, so Black is leaving by king, but firstly Spoelman takes on e5 – such ♖ can't be tolerated. **16...Nxe5 17.dxe5 Kg8 18.Bg5 Qa5** [18...h5 19.Qh4 Qa5 is just a transition.] **19.Qh4 h5 20.Bf6** [20.g4 seems prematurely: 20...Qxe5 21.gxh5 f6!] **20...Bxf6 21.Qxf6 Qd8** Black holds the line with only a queen. **22.Qf4**



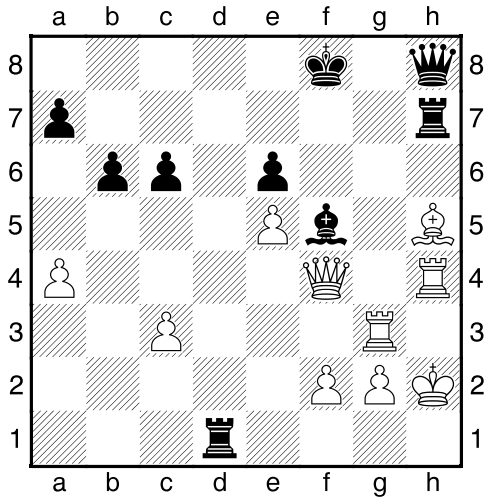
White is obviously planning to put own queen to h6 with plenty of threats. How Black will react? **22...Qe7!** [This is correct – queen goes to g7. Another version of this plan fails: 22...Re8? 23.Be2! Kg7 (23...Qe7 24.Bxh5+-) 24.Bxh5! Rh8 25.Bxg6!! fxc6 26.Qf6+ Qxf6 27.exf6+ Kg8 28.f7+-; on 22...Kg7 comes 23.g4! g5 24.Qe3 h4 25.Rf3!] **23.Qh6** [23.Be2 is met by 23...f5! now.] **23...Rd8** [Black has seen a trap 23...Qc5? 24.Rxh5! gxh5 25.Bd3 f5 26.exf6 Rf7 27.Bh7+! Rxh7 28.Qg6+ Kh8 29.Qe8+] **24.Be2** [After 24.Bd3!? Black has almost the only moves: 24...Qf8 25.Qg5 Bd7 26.Rxh5 Qg7 27.Rh6 Be8, though his position remains very dangerous.] **24...Qf8 25.Qf4 b6!** Finally black bishop will develop. **26.Re1!** [Prophylactic thinking. Black's calculation was based on 26.Bxh5 Ba6 27.Re1 (27.c4 c5) 27...Rd3] **26...Rd5 27.Bxh5 Ba6 28.Rg3 Qg7?!** [But this is unnecessary – returning to above-

mentioned plan 28...Rd3 was better.] **29.h4!** Having groped a weakness – pawn g6. **29...Bd3** [Now there is no time for 29...Rd3 – 30.Bf3 Rxc3 31.h5 Rc4 32.Be4+-] **30.Bf3 Rc5 31.Qd4!** Almost all black pieces are paralyzed. **31...Bf5 32.h5 Qf8**

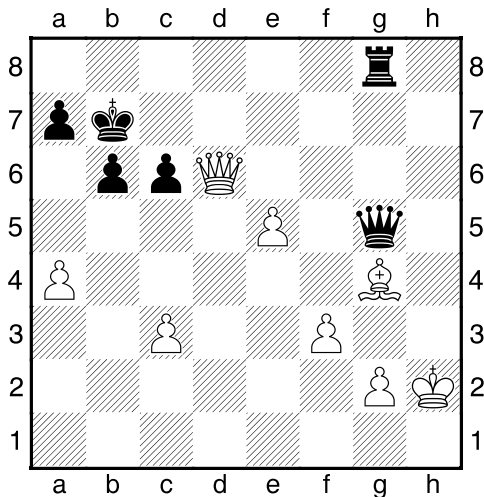


Admitting, that 28...Qg7 was a waste of time. **33.hxc6?!** [White was close to victory in case of strong 33.Bg4! Kh7 (differently ♗g6 falls) 34.Bxf5 gxf5 35.h6!, and ♖g3 is ready to penetrate.] **33...fxg6 34.Bh5 Kg7?!** [White wins beautifully in case of 34...Kh7 35.Bxg6+! Bxg6 36.Re4! Rd5 37.Rh4+ Kg7 38.Rxg6+! Kxg6 39.Qg4+ Kf7 40.Rh7+ Ke8 41.c4!+-; but 34...Kf7! was the most stubborn choice.] **35.Re4?** [Effective, but non-efficient. Modest 35.Ree3! with idea 35...-- 36.Bxg6 Bxg6 37.Qd7+ Qf7 38.Rxg6+ Kxg6 39.Rg3+ would decide fate of game.] **35...Rd8** At ♖ on e3 here would have followed 36.Qh4... **36.Qe3 Rcd5?** [Unbelievable, that Black has neglected simple 36...Rxc3! 37.Qxc3 Bxe4 38.Qc4 Bf5 39.Qxc6 with roughly equal game.] **37.Bxg6! Rd1+** [37...Bxg6 38.Rh4 Kf7 39.Rxg6 Kxg6 40.Qg3+ with mate.] **38.Kh2 Qh8+ 39.Bh5+?!** [Allowing to escape on f8, what would be impossible after 39.Bh7+! Kf7 (39...Kf8 40.Rg8+) 40.Rh4 Bxh7 41.Rgh3+-] **39...Kf8 40.Rh4 R8d7** Good resource – ♖ is directed to h7. **41.Qf4 Rh7**



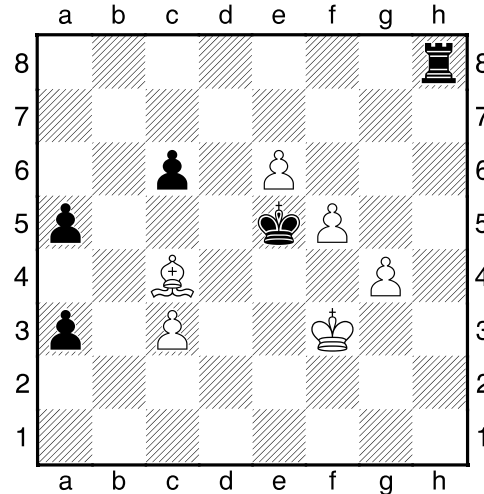


**42.Rg5?** [Bishop h5 has to be protected in another way: 42.Rgh3!+- with threats Bxd1 and g4 at the same time. Now all is going to be complicated.] **42...Ke7** King leaves a danger zone, whereas white pieces stuck. Liem cuts the knot. **43.Rxf5 exf5 44.Qxf5 Rd8 45.Rh3** [45.f4! in order to have 45...Rf8 46.Qg6!+-] **45...Rf8 46.Qg5+ Kd7 47.Bg4+ Kc7 48.f3** [White wants to keep the queen, so he refuses line 48.f4 Rg7!?] **48...Qg7 49.Rxh7 Qxh7+ 50.Bh3 Rg8 51.Qd2 Qg7** Suddenly white king feels oneself in danger too. **52.Qd6+ Kb7 53.Bg4 Qg5**



**54.e6?** [Decisive error, after which Black forces a transformation to favourable ending. 54.Kg3! would retain a dynamic balance.] **54...Rd8 55.Qg3 Rh8+ 56.Bh3** [56.Kg1 Qe3+ 57.Qf2 Rh1+] **56...Qxg3+**

**57.Kxg3 Kc7 58.f4 Kd6 59.Kf3 a5!** Reminding, that not only White has the right to passers. **60.Bf5** [Trying to stop passed ♖a5 by bishop. After 60.Ke4 b5 61.axb5 a4 62.Kd3 cxb5 63.f5 Ke7 one is choked with own pawns.] **60...b5 61.Bd3 bxa4 62.f5 Ke5 63.g4 a3 64.Bc4**



**64...a4!!** Compels the white king to occupy worse position, and not only. **65.Kg3** [65.Ke3 Rh3+ 66.Kd2 Kf6-+] **65...Rb8 66.Kf3 Rb2 67.Ke3** [Wiseness of move 64...a4 reveals in next variation: 67.e7 Rb8 (grabbing ♖e7) 68.Bf7 Kf6 69.Bc4 Kxe7 70.g5 Rb3!-+] **67...Kd6 68.f6 a2 69.Bxa2 Rxa2** That's all. King and rook easily cope with passers. **70.e7 Kd7 71.Kf3 Rb2 72.g5 Rb8 73.g6 Ke6 0-1**

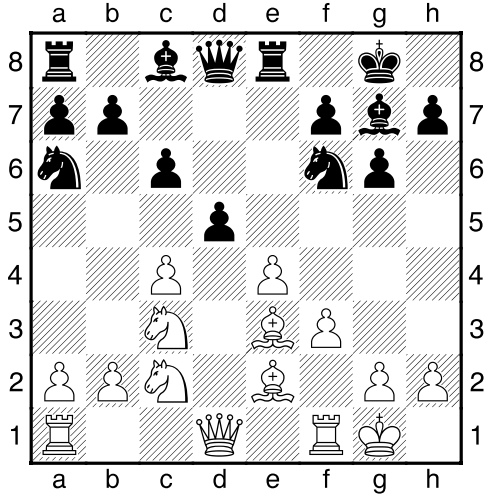
**(04) Nyzhnyk, Illya (2530) - Kazhgaleyev, Murtas (2637) [E94]**

73rd Tata Steel GMC Wijk aan Zee NED (1), 15.01.2011

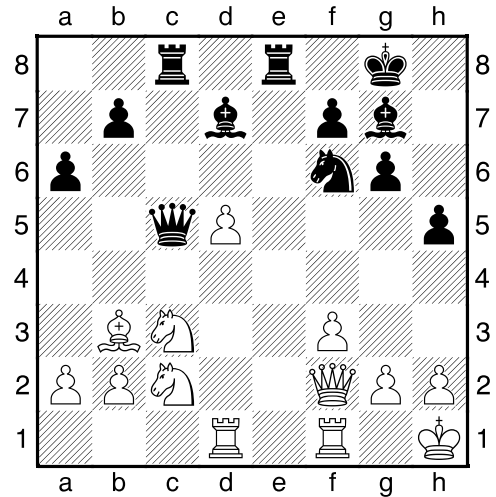
[IM Polivanov, A]

**1.d4 Nf6 2.c4 g6 3.Nc3 Bg7 4.e4 d6 5.Be2 0-0 6.Nf3 e5 7.0-0 exd4** [Continuation 7...Nc6 8.d5 Ne7 is the most natural in this branch of King's Indian, though it has much better material to learn, than in case of 7...exd4.] **8.Nxd4 Re8 9.f3 c6 10.Nc2** Without any delay White has started to think about ♖d6 assault. [One may find 10.Kh1 in Beliavsky-Bologan, CZM 10/2010] **10...Na6** [Plan with immediate d6-d5 doesn't bring much: 10...Be6 11.Be3 d5 (11...Qc7 12.f4!f, Najdorf-Pilnik,

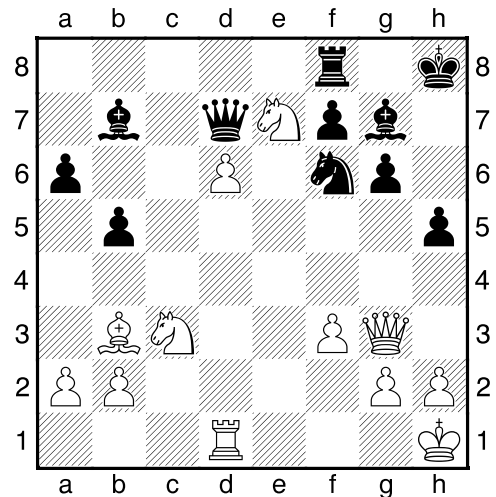
Amsterdam 1950) 12.cxd5 cxd5 13.e5 Nfd7 14.f4±] **11.Be3 d5**



Otherwise simply Qd2, Rad1...**12.cxd5** [Also practised 12.exd5 cxd5 13.c5, but after 13...Nb4 14.Bf2 Nxc2 15.Qxc2 d4 Black obtains good countergame. So why not to take ♗d5?] **12...cxd5 13.exd5 Nb4** The same motif – bishop e3 is eliminated. **14.Nxb4 Rxe3 15.Nc2 Re8N** [Previously met an idea to put ♖ on d7, but it didn't work out: 15...Re7 16.Qd2 Be6 17.Bc4 Rd7 18.Rad1 Qc7 19.Qe2 Bf5 20.Bb3±, Porat–Novikov, Chalkidiki 2001] **16.Kh1 Qa5 17.Bc4** White overprotected own main power – ♗d5. **17...Bd7 18.Qd2 h5** Black wants to use ♗ as a ram. **19.Qf2!** Prevention to h5–h4–h3, but true sense of this move will become clear later. **19...a6** [This move appears almost pointless, because 19...b5 was possible right now, but 20.Bb3 b4 21.Ne4 Bb5 (21...Nxd5 22.Bxd5 Qxd5 23.Rad1!+-) 22.Rfd1 Nxe4 23.fxe4 Rxe4 24.d6! (now queen f2 works in full operation) 24...Rf8 25.d7 presents quite painful sight. So maybe 18...h5 was unnecessary move – 18...b5 is better instead.] **20.Rad1** Strengthening own position – it's obvious, that Black hasn't any sensible compensation. **20...Rac8 21.Bb3 Qc5**



**22.Qg3!** White even declines a better ending with spare pawn, because he finds new weakness – ♗g6! This is another drawback of 18...h5. **22...Rcd8 23.Nd4** Threat Nd4–e6 seems very strong, so Kazhgaleyev is withdrawing the king. **23...Kh7** [Maybe, 23...Bc8 was the best after all.] **24.d6** Now ♗f7 can be defended uniquely, but line "e" is given up then. Well, it can't be helped. **24...Rf8 25.Rfe1+- Bc8 26.Nc2 b5 27.Re5!** Before moving to e7, ♖ is throwing queen away. Why? **27...Qb6 28.Re7 Rd7 29.Ne3!** That's why! **29...Qd8 30.Rxd7 Qxd7 31.Ned5 Bb7 32.Ne7** With firm intention to hit on f7. **32...Kh8**



**33.Bxf7!** Nevertheless. 3♗ + rook is too much for a two pieces. **33...Rxf7 34.Nxg6+ Kg8 35.Ne5 Qe6 36.Nxf7 Qxf7 37.Re1** ♖'s invasion on 7th rank will complete the work. **37...h4 38.Qg5** [Even not distracted

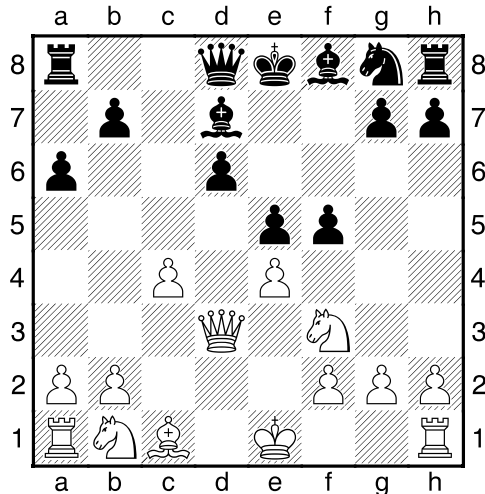
by 38.Qxh4] **38...Bc6 39.Re7 Qf8 40.Rc7 b4 41.d7!** And fine combination for the last bit. **41...Nxd7** [41...Bxd7 42.Nd5 Qd8 43.Rxd7+-] **42.Nd5 Qe8 43.Rc8** [43.Nf6+ was stronger!] **1-0**

**(05) Ni Hua (2645) - Dzhumayev, Marat (2493) [B51]**

9th Parsvnath Open New Delhi IND (10), 15.01.2011

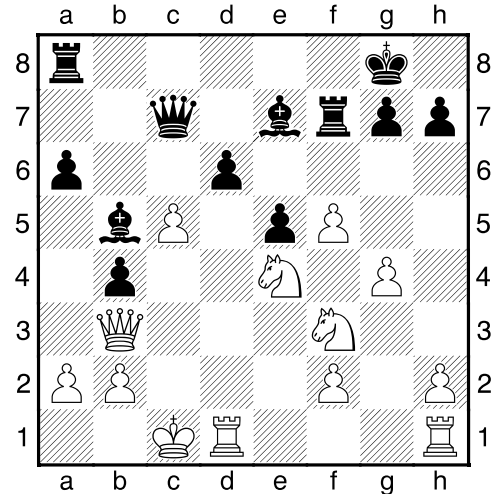
[IM Polivanov, A]

**1.e4 c5 2.Nf3 d6 3.Bb5+ Nd7** "3.Bb5+ is so strange move, that it can be answered anyhow" (c) Topalov (if I'm not mistaken). **4.d4 cxd4** [Some prefer 4...Ngf6 in order to cause 5.Nc3 and exclude thus c2-c4 opportunity, but Dzhumayev, apparently, isn't scared by Maroczy-like structures.] **5.Qxd4 e5 6.Qd3 a6 7.Bxd7+ Bxd7 8.c4 f5?!N**

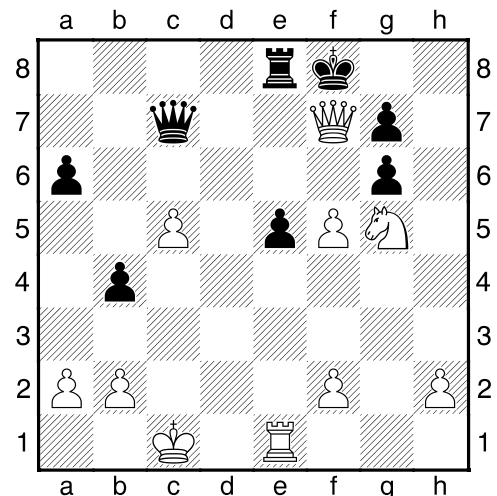


[Dubious idea. I like more an approach, which was demonstrated in one of the recent games: 8...Rc8 9.Nc3 Qc7 10.b3 b5! 11.Nd5 Qc6 12.Nd2 Ne7, and after 13.Ba3?! Nxd5 14.cxd5 Qb6 15.0-0 Be7 16.Rfc1 0-0 17.Nf3 b4 18.Bb2 f5!, Haznedaroglu-Jianchao, Manila 2010, Black has intercepted an initiative and eventually won.] **9.Nc3!** [9.exf5 Qc8 10.g4?! h5±] **9...Nf6** [Perhaps, it was better to choose 9...fxe4 10.Nxe4 Bc6 11.0-0 Nf6 12.Nfg5! Qd7!? with the idea of long castle.] **10.exf5 Be7** [Now 10...Qc8 will be followed simple 11.Nh4] **11.Bg5 0-0 12.Bxf6!** [Ni Hua on the look-out – careless 12.0-0? e4 leads to piece's loss.] **12...Rxf6 13.g4** Pure extra pawn right after the opening – is it possible

ask for more? **13...Rf7** [13...b5 14.Nd5 Rf7 15.c5! – so ♖ goes to f7 beforehand.] **14.0-0 b5 15.c5!** However, this move is still working. Black's hopes are broken – lines "a", "b" remain closed. **15...b4 16.Ne4 Bb5 17.Qb3** [17.Qc2 also good, but king and queen on the same line could be pinned – at least, subconsciously.] **17...Qc7**



**18.g5** [18.Kb1 dxc5 19.Nfg5 c4 20.Qh3 leads to winning of exchange, but White has something different in mind.] **18...Bc6 19.Rhe1** [19.g6? Bxe4 20.gxf7+ Kf8, and Black even wins.] **19...d5 20.Rxd5! Bxd5 21.Qxd5** This sacrifice forms all White's invention – there is no appropriate defence against g5-g6. **21...Rd8 22.Qc4 Kf8 23.g6 hxg6 24.Nfg5!** It's found out, that White is winning an exchange back. **24...Bxg5+ 25.Nxg5 Re8 26.Qxf7+**



Transition to the ending – is the most straight decision. **26...Qxf7 27.Nxf7 Kxf7 28.fxg6+ Kxg6 29.Kc2** ♖c5 guarantees a victory. **29...Rf8** [29...Kf5 30.Kb3+–] **30.Rxe5 Rxf2+ 31.Kb3 Kf6 32.Re4!** ♖'s place – behind the passed ♗. **32...Rxb2 33.c6 Rh5 34.c7 Rh8 35.Rc4 Rc8 36.Kxb4** Very energetic and impressive play by Chinese grandmaster – in fact, Black didn't make any gross mistakes, but lost anyway. **1-0**

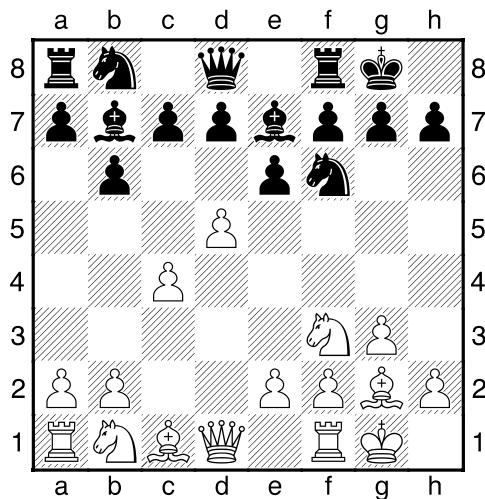
**(06) Zhou Weiqi (2573) - Cao,S (2558)**

**[E17]**

1st HDBank Cup Ho Chi Minh City VIE (9.4), 09.01.2011

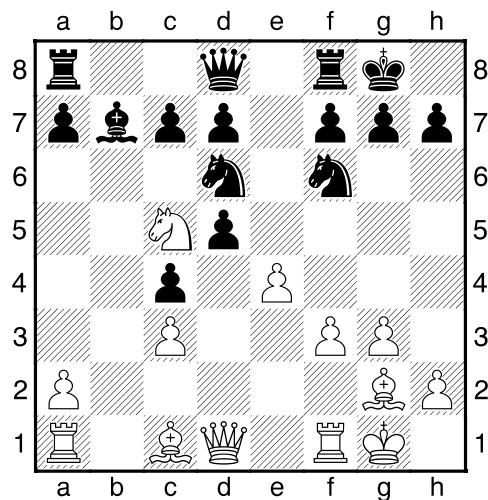
[IM Polivanov, A]

**1.Nf3 Nf6 2.c4 b6 3.g3 Bb7 4.Bg2 e6 5.0-0 Be7 6.d4 0-0 7.d5!?**



[A very interesting alternative to the classical 7.Nc3 – White hampers d7–d5, Nf6–e4 and other ways of development.] **7...Na6** [Restrained response. Black doesn't want to dive into complicate lines like 7...exd5 8.Nh4 c6 9.cxd5 cxd5 (or 9...Nxd5 10.Nf5 Nc7 11.e4 d5) 10.Nc3 Na6 11.Nf5 Nc7 12.Bf4] **8.Nc3** [By means 8.Nd4 exd5 (otherwise e2–e4) 9.Nf5 c6 10.cxd5 cxd5 11.Nc3 Nc7 deal however could be come to foregoing variation.] **8...Bb4** [8...Nc5 9.Nd4] **9.Nd4** [Pawn structure can be saved after 9.Bd2, but White is already tuned to conduct e2–e4.] **9...Bxc3 10.bxc3 Nc5 11.Nb3** Eliminating of interfering ♗c5 – this is a merit of 9.Nd4

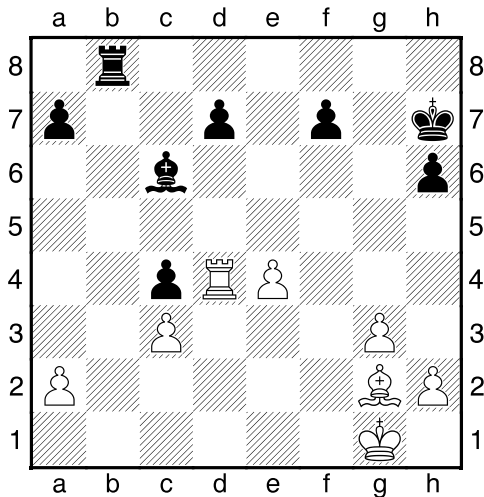
in comparison with 9.Nh4. **11...Nce4 12.f3 Nd6N** [Quite logical novelty – 12...Nxc3 arisen in the game Topalov–Kasimdzhanov, FIDE–Wch 2004: 13.Qc2 (probably, 13.Qd2 Na4 14.Qb4 is stronger) 13...Na4 14.e4 d6, and now after 15.Na5 Nc5 16.Nxb7 Nxb7 17.f4♞ White would obtain a menacing initiative.] **13.c5** [In referred game mentioned variation 13.dxe6 fxe6 14.Ba3 Qb8 15.e4 e5 16.Qd3, but simple 13...dxe6! is much better.] **13...bxc5?!** [N8...Nc4] **14.e4!** [Maybe, Black considered 14.Nxc5 Bxd5 15.e4 Nb7!, but now some problems are emerging.] **14...c4** [Letting oneself go. There was a defence (truth to say, slightly awkward) – 14...Ba6 15.Re1 Nb7 – but Cao decided in own way.] **15.Nc5** Now material losses are inevitable. **15...exd5**



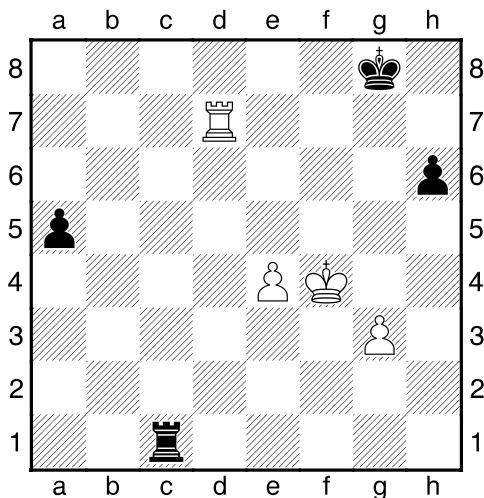
[15...e5 16.f4! Qe7 17.fxe5 Qxe5 18.Bf4+–] **16.e5?** [White didn't go deeply into the thoughts of opponent. 16.Nxb7 Nxb7 17.e5 Ne8 18.Rb1! Nc5 19.Qxd5 secures a winning position – bishops are devastating.] **16...Bc6 17.Bg5** [As it turned out, there is a problem with ♗c5: 17.exd6 cxd6 18.Na4 Qa5 19.Nb2 Qxc3♣; 17.exf6 Qxf6 18.Qd2 Nf5 – so White at least strips black king.] **17...h6 18.Bxf6 gxf6 19.exd6** [19.f4 Nf5 20.Qg4+ Ng7] **19...cxd6 20.Ne4 dxe4 21.fxe4** Without two ♗, but a lot of weaknesses – chances are mutual. **21...Qe7?!** [Too passive! 21...Qb6+ 22.Kh1 Qe3, penetrating into enemy's camp, by far cheery.] **22.Rf5 Kh7 23.Qd4** [This square



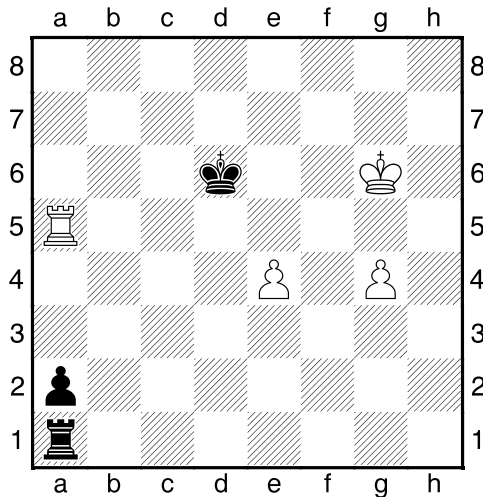
is not the best for the queen – but f4 is!  
 23.Qf3! can be responded only by 23...Rg8  
 24.Rxf6 Raf8 25.Rf1 Rg6 with a little bit  
 worse endgame after exchanges on f7.]  
**23...Rab8 24.Raf1 Rb2 25.R1f4 Qd8**  
 [25...Rxa2?! 26.Bf1!, and if 26...Ra1, then  
 27.Qd2!, winning. That's why Black wants  
 to swap queens to get out of harm's way.]  
**26.Rf2 Rxf2 27.Rxf2** Plan is changing –  
 swap will be conducted from e5. **27...Qe7**  
**28.Rxf6 Qe5 29.Rxd6 Qxd4+ 30.Rxd4**  
**Rb8**



Now a total annihilation comes. **31.Bf1**  
**Rb1 32.Kf2** [32.Rxc4? Rxf1+] **32...Rb2+**  
**33.Ke3 Rxa2 34.Bxc4 Rxh2 35.Bxf7 Rg2**  
**36.Kf3 Rc2 37.c4 a5** [Playing a trump.  
 37...Kg7 was also enough: 38.Bd5 Kf6  
 39.Kf4 Rf2+ 40.Ke3 Ke5!]=] **38.Be8 Kg8**  
 To avoid a check through 7th rank. **39.Bxd7**  
**Bxd7 40.Rxd7 Rxc4 41.Kf4 Rc1!?**



[41...Rc6 42.e5 (42.Ra7 Rf6+ 43.Ke5 Rg6)  
 42...Ra6! 43.Kf5 a4 44.e6 Ra8! 45.Kg6 a3  
 46.Rg7+ Kh8 guarantees a draw, but  
 Black's plan quite good too – pushing ♖ till  
 a2.] **42.Ra7 Ra1 43.Kf5 a4 44.g4 a3**  
**45.Kg6 Kf8 46.Ra8+ Ke7 47.Kxh6 a2**  
**48.Kg5** Despite an extra pawn, White can't  
 win here – as soon as king will be sepa-  
 rated from ♗g4, Rg1 follows. **48...Ke6**  
**49.Ra5 Kd6 50.Rd5+ Ke6 51.Ra5 Kd6**  
**52.Kg6**



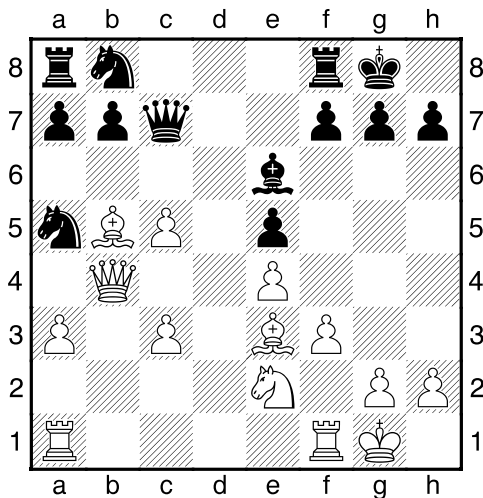
**52...Ke6??** [Easy draw is achieved by  
 52...Rg1! 53.Rxa2 Rxc4+ 54.Kf5 Rh4  
 55.e5+ (55.Ra7 Rh5+ 56.Kf6 Rh6+)  
 55...Ke7 56.Ra7+ Ke8 57.Kf6 Rh6+ 58.Kf5  
 Rb6 with famous Philidor position.] **53.g5**  
**Kd6 54.Kg7! Ke6** [Now 54...Rg1 doesn't  
 save in view of 55.Rxa2 Rxc4+ 56.Kf6 Rh5  
 57.Rd2+ Kc7 58.e5 – black ♖ is on the  
 short side: 58...Rh6+ 59.Kf7 Rh7+ 60.Kg6  
 Re7 61.Kf6+–] **55.g6 Kd6 56.Rd5+ Ke6**  
**57.Rd2!** Standard transition to the 2th rank  
 – ♖ will protect own king against checks  
 from here. **57...Ke5 58.Re2** [58.Rh2 at  
 once will do.] **58...Kd6 59.Rh2 Ke7 60.Kh7**  
**Kf6 61.g7 Rg1 62.Rf2+ Ke6 63.Rxa2** This  
 ending is won without ♗e4, but with it – all  
 the more. **63...Rh1+ 64.Kg8 Ke7 65.Ra7+**  
**Ke8 66.Ra5 Ke7** [66...Rh2 67.Re5+ Kd7  
 68.Kf7 Rf2+ 69.Rf5] **67.Re5+ Kd6 68.Kf7**  
**1-0**

**(07) Anand,Viswanathan (2810) - Wang,Hao Yuan (2731) [E25]**

73rd Tata Steel GMA Wijk aan Zee NED (4), 18.01.2011

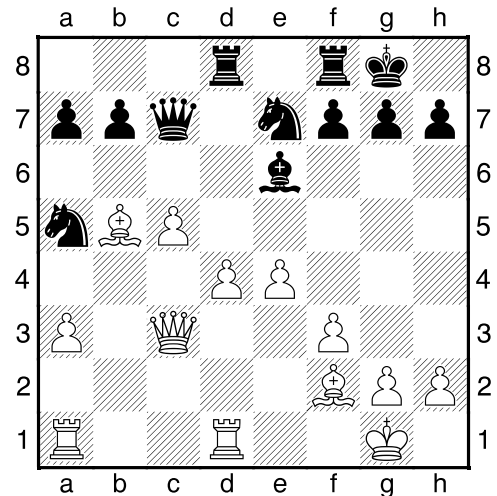
[IM Polivanov, A]

**1.d4 Nf6 2.c4 e6 3.Nc3 Bb4 4.f3** This system occupies a prominent place in Anand's repertoire. In particular, he apply it against Kramnik in the World Championship match. **4...d5 5.a3 Bxc3+ 6.bxc3 c5 7.cxd5 Nxd5** [In case of 7...exd5 White develops by Botvinnik's method: 8.e3 Δ Bd3, Ne2, 0-0 and in suitable moment e3-e4.] **8.dxc5 Qa5** [There is an attempt to secure ♖d5 - 8...f5, but after 9.Qc2 (not 9.e4 fxe4 10.fxe4? Qh4+) 9...0-0 10.e4 it's driven away anyhow.] **9.e4 Ne7 10.Be3 0-0** [10...Qxc3+ 11.Kf2 Δ Ne2] **11.Qb3 Qc7** Black has an intention to use queen's b3 posture by knight's transfer. **12.Bb5** [Quite recent approach. At the beginning of 90's, 12.a4 (to provide point a3 for the queen) was the most popular: 12...Nec6 13.f4 Na5 14.Qa3 Nd7 15.Nf3 b6 16.cxb6 axb6, Khalifman-Van der Wiel, Wijk aan Zee 1991, and after exchange of bishops Black gains some positional compensation.] **12...Nec6 13.Ne2 Na5 14.Qb4** [One day up to then, Kramnik tried against Wang 14.Qa4 a6 15.Bd3 Nd7 16.Bc2, but received nothing: 16...Nxc5 17.Qb4 Nd7 18.0-0 Nc6 19.Qb2 Nce5 20.Bf2 b5=] **14...e5 15.0-0 Be6**



Black wants to use square b3, or maybe move Na6 first. What to do?..**16.Nd4!!N** Astonishing novelty! Frankly speaking,

computer finds this move in a half-minute, but this fact doesn't depreciate Anand's merits. [Without a doubt, Anand was guided by next game: 16.Rfd1 Bb3 17.Rd6 Nbc6 18.Bxc6 bxc6 19.c4□ Rab8 20.Qc3y Cebalo-Marinkovic, Budva 2009] **16...exd4** [One has to accept the challenge - 16...Bd7 17.Nf5+-] **17.cxd4** White got for a piece two strong ♖ and home analysis. This is more than enough. **17...Nbc6 18.Qc3 Ne7** Black tries to stop d4-d5 threat at all costs, but it's restored again. **19.Rfd1 Rad8 20.Bf2!**



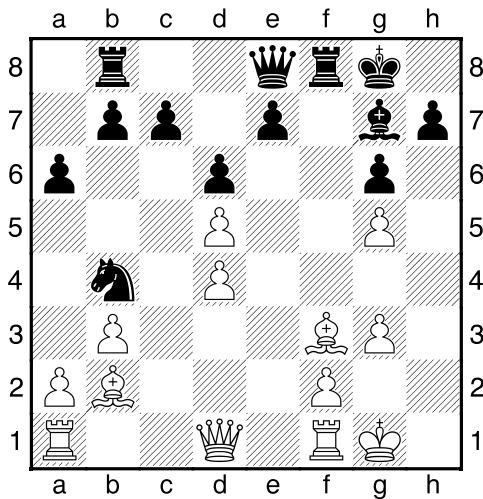
[White wants to put a bishop on d6, after which d4-d5 will be lethal. The same idea could be performed by 20.g3!?] **20...a6?!** [Maybe, this is the unique moment, where Wang's play can be improved. 20...f5!? looks logical, counting on 21.Bg3 f4, but then 22.Bh4! - so, there is left only to defend oneself after 22...Nac6 23.d5 Nxd5 24.exd5 Rxd5 25.Rxd5 Bxd5] **21.Bg3 Qc8 22.Bf1** With all misfortunes, ♖a5 has problems now. **22...b6 23.Rab1! Nb3 24.Rxb3** The most simple decision. **24...Bxb3 25.Qxb3 bxc5 26.d5** ♖ a6 and c5 are not long for this world. **26...Ng6 27.Qb6 f5 28.Bxa6 Qd7 29.Bb5 Qf7 30.exf5 Qxf5 31.Qxc5 Rc8 32.Qd4 Rfd8 33.a4** Passed pawns a4 and d5 just go forward, and there is nothing can be done about it. **1-0**

**(08) Wang,Hao Yuan (2731) - Gri-  
schuk,Alexander (2773) [E63]**

73rd Tata Steel GMA Wijk aan Zee NED  
(5), 20.01.2011

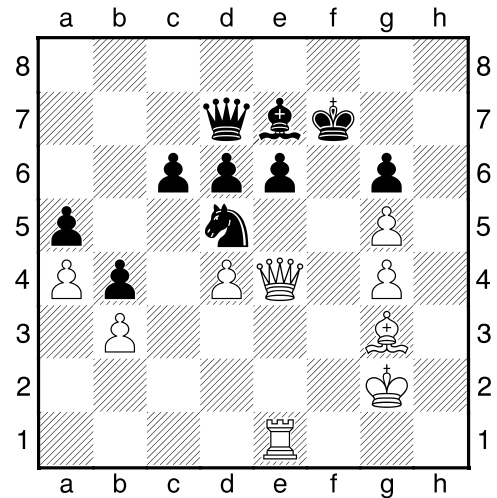
[IM Polivanov, A]

**1.d4 Nf6 2.c4 g6 3.g3 Bg7 4.Bg2 0-0  
5.Nc3 d6 6.Nf3 Nc6** [This modern, "flank"  
scheme (Nc6, a6, Rb8) practically replaced  
classical, "central" 6...Nbd7 7.0-0 e5] **7.0-0  
a6 8.b3 Rb8 9.Nd5!?** Approved by Ukrai-  
nian grandmaster Oleg Romanishin.  
**9...Bg4** [Idea of 9.Nd5 reveals in line 9...b5  
10.Nxf6+ Bxf6 11.Bh6 Re8 12.Rc1!;  
9...Nxd5 10.cxd5 Nb4 was also attempted,  
but there is 11.e4 f5 12.Ng5!f, so Black is  
trying to strengthen a variation.] **10.Bb2  
Nxd5** [Now game switches to the tactical  
rails. Calm 10...Qd7 11.Ne3 Bh3 can be  
recommended instead: 12.d5 Nd8 13.Qc2  
Bxg2 14.Kxg2 c5!, Lalic-McShane, Hast-  
ings 2000] **11.cxd5 Nb4 12.e4 f5** Now Ng5  
is impossible, but there is something else.  
**13.h3 fxe4** [13...Bh5 is bad – 14.exf5 gxf5  
15.Qd2! Nxd5 16.Ng5] **14.hxg4 exf3  
15.Bxf3 Qe8! 16.g5**



[16.a3 is parried by double strike 16...Qf7,  
but what now? Bg4–e6 threatens...]  
**16...Rxf3?N** [Apparently, Grischuk was  
scared by something like 16...Qf7 17.Bg4  
Qxd5? (17...Nxd5 18.Qe2 e5! is better,  
though after 19.f4 e4 20.f5 White is attack-  
ing) 18.Qe1 Qb5 19.a4! Qb6 20.a5 Qb5  
21.Be2 1-0, Petrik-Talla, Brezova 2009;  
nevertheless, solid 16...Kh8 17.Kg2 Qf7  
has created good situation for Black in the

next fragment: 18.Qe2 Rbe8 19.Qe4 e6!  
20.dxe6 Rxe6 21.Qg4 (21.Qxb7 Qf5!)  
21...c6, Rotstein-Gross, AUT-chT 2007]  
**17.Qxf3 Qf7** Now White with clear ex-  
change up, and the only question is  
whether Black will be managed to build a  
fortress. **18.Qe2** Of course, White keeps  
the queens on the board. **18...Rf8 19.f4  
Nxd5 20.Rf2 h6!?** Winning plan needs to  
include break f5, so Black wants to impede  
g4 with bishop at h6. But White doesn't buy  
it and just doing his business. **21.Raf1 c6  
22.g4 e6 23.Qe4** At the moment f5 is a real  
danger, so Black got to cede "f"-line.  
**23...hxg5 24.fxg5 Qe8 25.Rxf8+ Bxf8  
26.Re1 Kf7** So, what's next? Well, it's  
clear, that White should keep in readiness  
an invasion on row "h". **27.Kg2 b5 28.a4**  
Verifying, is Black going to open some  
lines. **28...b4** Nope, he's not. OK, it's ne-  
cessary to think out something. **29.Bc1!**  
Good maneuver – bishop is heading to f4,  
wherefrom it will keep eye on ♖d6. **29...a5  
30.Bf4 Qd7 31.Bg3** [31.Rh1 e5!↔]  
**31...Be7?**



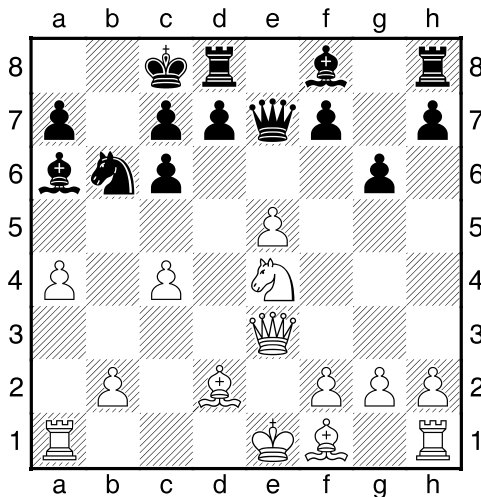
[Being exhausted with difficult defence,  
Grischuk made a fatal mistake. Worth to  
prefer 31...Qe7 32.Rf1+ Kg7 33.Bf4 Qd7,  
and even after 34.Rh1 Kf7 35.Rh7+ Bg7  
Black holds. So maybe it is a fortress after  
all...] **32.Rf1+ Kg7 33.Be5+!** Nice tactics.  
**33...dxe5 34.Qxe5+ Kg8 35.Rh1** Bishop  
had to stay on f8 to move Bg7 in such cas-  
es. **35...Nf4+ 36.Kf1! 1-0**

**(09) Shirov,Alexei (2722) - Kramnik,Vladimir (2784) [C45]**

73rd Tata Steel GMA Wijk aan Zee NED (6), 21.01.2011

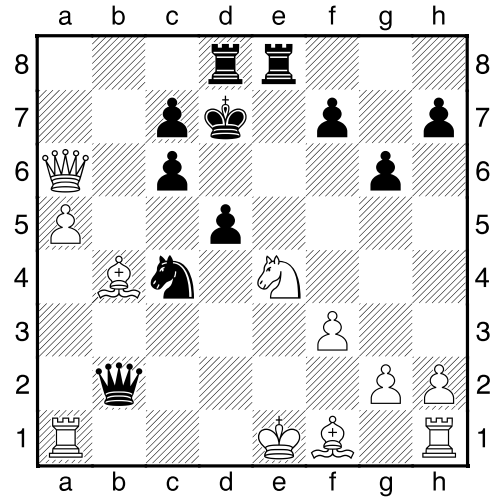
[IM Polivanov, A]

**1.e4 e5 2.Nf3 Nc6 3.d4 exd4 4.Nxd4 Nf6 5.Nxc6 bxc6 6.e5 Qe7 7.Qe2 Nd5 8.c4 Nb6** [For 8...Ba6 pay attention to Ponomarev-Leko, CZM 08/2010] **9.Nc3 Bb7 10.Bd2** [In the first round of this tournament Nepomniachtchi tried 10.Bf4 g6 11.h4 Bg7 12.0-0-0 0-0 13.h5, but after 13...Rae8 14.Re1 Ba6 15.Qe4 Qc5↗ Kramnik takes a counterplay.] **10...g6** [10...0-0-0 11.0-0-0 Re8 12.f4 f6 13.exf6 gxf6 14.Qh5!f, Motylev-Zhang Zhong, Linares 2001] **11.Ne4!?** [Very logical effort to use dark sides of 10...g6: 1) weakness of square f6; 2) exposing of diagonal a1-h8 (pawn e5 is untouchable). 11.0-0-0 Bg7 12.f4 0-0-0 13.Ne4 Rhe8 14.c5 Nd5 15.Qc4 f6↗, Jakubovics-Griffiths, BCF-chT 1998] **11...0-0-0** [11...Bg7 12.Nf6+ Bxf6 13.exf6 Qxe2+ 14.Bxe2±] **12.a4** [Disturbing ♖b6. Much weaker 12.c5? Nd5 13.Bg5 Qxe5 14.Bxd8 Kxd8 with excellent compensation.] **12...Ba6 13.Qe3**



[Idea 13.a5 Nxc4 14.Ra4 is dubious due 14...Bg7! 15.Rxc4 Bxe5 with d5 – white king is uncastled after all.] **13...Qxe5!** [Excellent decision (is it part of home preparation?) – 13...d5 14.a5 d4 15.Qh3+ Nd7 16.f4 f5 17.Nf2 leaves Black without cheerful prospects, but now all will be much funnier.] **14.Bc3 Bb4!** A piece is giv-

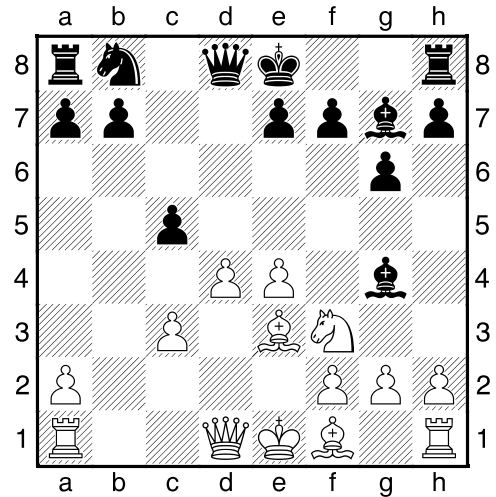
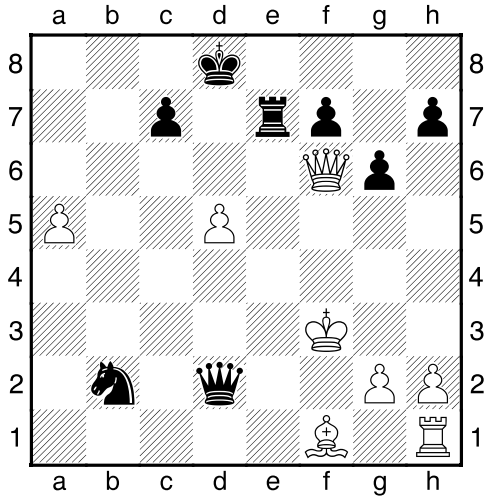
en for unpleasant pin through "e"-line. **15.Bxb4 Rhe8 16.f3 d5 17.a5** [Shirov keeps at ♖a raid. 17.cxd5 Bxf1 18.Kxf1 is also an alternative, though after 18...f5! (18...cxd5 19.a5) 19.Bc3 Qxd5 20.Bf6 Nc4! Black doesn't run risks.(20...Rd7? 21.Nd6+)] **17...Nxc4 18.Qxa7 Qxb2 19.Qxa6+ Kd7!**



[In case of 19...Kb8 battle resulted in draw after next complications: 20.Bxc4 Rxe4+! (20...Qxa1+? 21.Kf2 Qxh1 22.Nc5+-) 21.fxe4 Qxa1+ 22.Kf2 Qd4+ 23.Kf1 dxc4 24.Qxc6 Qd3+ 25.Kf2 Qc2+ 26.Kf1; 19...Kd7 as the minimum is not weaker, besides, it contains a trap.] **20.Rd1?** [Probably, king d7 tempts this move; only 20.Bxc4 was correct here – 20...Qxa1+ (20...Rxe4+ 21.fxe4 Qxa1+ 22.Kd2 Qxh1 23.exd5 Qxg2+ is unclear) 21.Kf2 Qd4+ 22.Kg3 Qe5+=] **20...Qxb4+ 21.Kf2 Rxe4!** Queen needs a check on c5. **22.fxe4 Qc5+ 23.Ke1** [23.Kg3 Qe3+ 24.Kh4 Qxe4+ 25.Kh3 Qf5+ 26.Kg3 Qg5+ 27.Kh3 Qh5+-] **23...Qb4+ 24.Kf2 Qc5+ 25.Ke1 Nb2!** Now Black can play calm to the victory – the perpetual check is always near. **26.exd5** [Either under 26.Be2 Nxd1 27.Bxd1 (27.Kxd1 Rb8) 27...Re8; or 26.Qe2 Nxd1 27.Qxd1 Qxa5+ White has nagging problems.] **26...Qc3+ 27.Rd2 Qc1+?** [Serious inaccuracy. Much stronger was 27...Re8+! 28.Be2 Qc1+ 29.Kf2 Qxd2, and Black should win here: 30.Qxc6+ Kd8 31.Qf6+ Re7 32.Rb1 Qxe2+ 33.Kg1 Qc2! 34.Qxb2 Re1+] **28.Ke2 Re8+ 29.Kf3 Qxd2**



**30.Qxc6+ Kd8** [30...Ke7 31.Bb5+--]  
**31.Qf6+ Re7**



**32.Kg4?** [32.Qh8+ Kd7 33.Bb5+ c6 34.Bxc6+ Kc7 gives nothing; one wants to play 32.Bb5, but 32...Qxd5+; hence, king has to go from under check: 32.Kg3! Qe3+ 33.Kh4, and Black has nothing better than draw.] **32...Nd1!** Now we see the difference – king falls into checks (Nf2, Ne3, Qb4)... **33.Qh8+** [33.Bb5 Nf2+ 34.Kh4 Qb4+] **33...Kd7 34.Bb5+ c6 35.Bxc6+ Kc7** As in annotation to 32th move, this line fails. **36.d6+ Qxd6 37.Rxd1 Qxd1+ 38.Bf3 h5+ 39.Kg3 Qe1+ 40.Kh3 Qe6+ 41.Kh4 g5+!!** Brilliant ending! **42.Kxg5 Qg6+ 43.Kf4 f6** [43...f6 44.h4 Re8! 45.Qxh5 Re4+] **0-1**

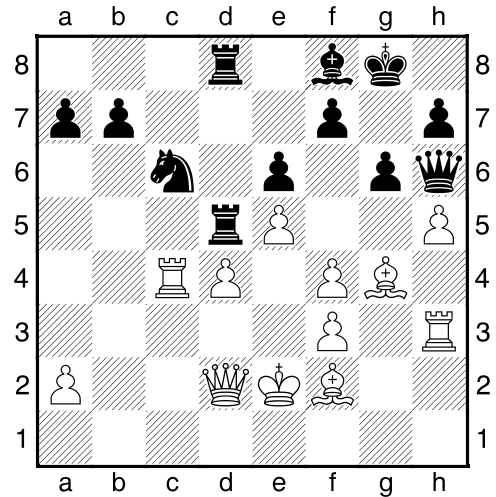
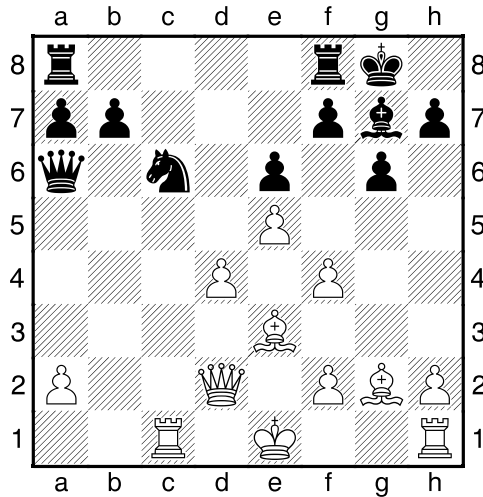
**(10) Giri, Anish (2686) - Nepomniachtchi, Ian (2733) [D85]**

73rd Tata Steel GMA Wijk aan Zee NED (6), 21.01.2011

[IM Polivanov, A]

**1.d4 Nf6 2.c4 g6 3.Nc3 d5 4.cxd5 Nxd5 5.e4 Nxc3 6.bxc3 Bg7 7.Nf3 c5 8.Be3 Bg4!?**

["In my opinion, this rare move deserves more attention, since lately White has managed to find some new ideas in the main system with 8...Qa5 " (c) Roiz] **9.Rc1 Bxf3** [9...Qa5 10.Qb3! cxd4 11.Nxd4 Qc7 12.Nb5± – so it's better to get rid of the knight immediately.] **10.gxf3 cxd4 11.cxd4 0-0 12.f4N** [Black was doing good in the next game: 12.Bc4 Qa5+ 13.Kf1 Nc6 14.d5 Ne5 15.Bb3 Rac8 16.Kg2 Qa6 17.Qd2 b5, Gligoric–Belavsky, Baden Vienna 1980. Giri wants another destiny for his bishop – diagonal a8–h1.] **12...e6** Raising a barrier on the path of ♖d4. **13.Bg2 Nc6** Very controversial decision – now white pawns will be targets, and black pieces settle on squares d5, f5. **14.e5?!** [It seems, that direction 14.d5 exd5 15.exd5 (15.Qxd5 Nb4) 15...Ne7 (15...Qa5+ 16.Qd2) 16.0-0 Nf5 17.Bc5 is more perspective.] **14...Qa5+ 15.Qd2 Qa6 16.Qe2 Qa5+** Now Nepomniachtchi "blackmails" White with repetition. **17.Qd2 Qa6**



**18.Bf1** [Giri chooses to continue the fight. Another path to make it was interesting 18.h4 h5 19.f5! exf5 (19...gxf5? 20.Bxc6 bxc6 21.Bh6+-) 20.f4 Rfc8 21.Kf2] **18...Qa4 19.Rc4** Protection of  $\triangleleft$ d4, but now black queen enters white camp. **19...Qb5 20.Rc5 Qb1+ 21.Ke2 Qe4 22.f3 Qf5 23.h4** Intending to catch the queen after Bh3-g4 - Black on one's guard. **23...Qh5 24.Bf2?!** [It's a false track - Giri is planning Bh3-g4 + h5, but it's too long and unproductive. Worth to choose 24.d5 exd5 25.Rxd5 Rad8 26.Kf2, giving air to own bishops.] **24...Rfd8** [It's hard to resist from desire to put  $\triangleleft$  in center - 24...Ne7, but Black has a precise goal -  $\triangleleft$ d4.] **25.Bh3 Bf8 26.Bg4 Qh6 27.Rc4 Rd5 28.h5 Rad8 29.Rh3?**

[Final mistake. It was necessary to run from a pin - 29.Qc3, using that taking 29...Qxf4?! is dangerous: 30.Be3 Qg3 31.Kf1! Rb5 32.Qc1!, and queen g3 has a serious trouble.] **29...Bc5! 30.hxg6 Qxg6 31.f5 exf5 32.Bh5 Nxd4+!** [This strike has to be foreseen, otherwise White's strategy would prevail - 32...Qe6? 33.Qg5+] **33.Kf1** [33.Rxd4 Qa6+] **33...Nxf3 34.Qxd5 Rxd5 35.Bxf3** [35.Bxg6 Nd2+] **35...Bxf2!** Fastest way to the victory. **36.Bxd5 Qg1+ 37.Ke2 Qe1+ 38.Kf3 Qf1 0-1**

### Editorial staff:

GM Valery Aveskulov (ELO 2534)  
 IM Anatoliy Polivanov (ELO 2356)  
 IM Tarlev Konstantin (ELO 2478)  
 IM Sergey Perun (ELO 2345)  
 Dmitry Posokhov (ELO 2294)

Chief editor Roman Viliavin (ELO 2248)  
 email: [chesszone@ya.ru](mailto:chesszone@ya.ru)